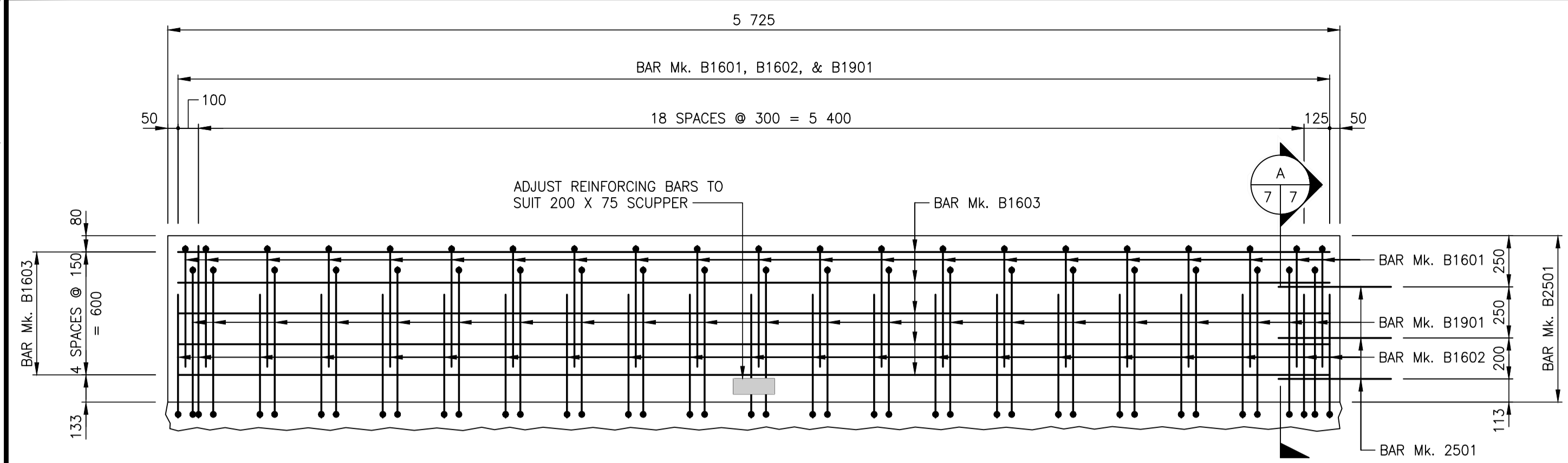
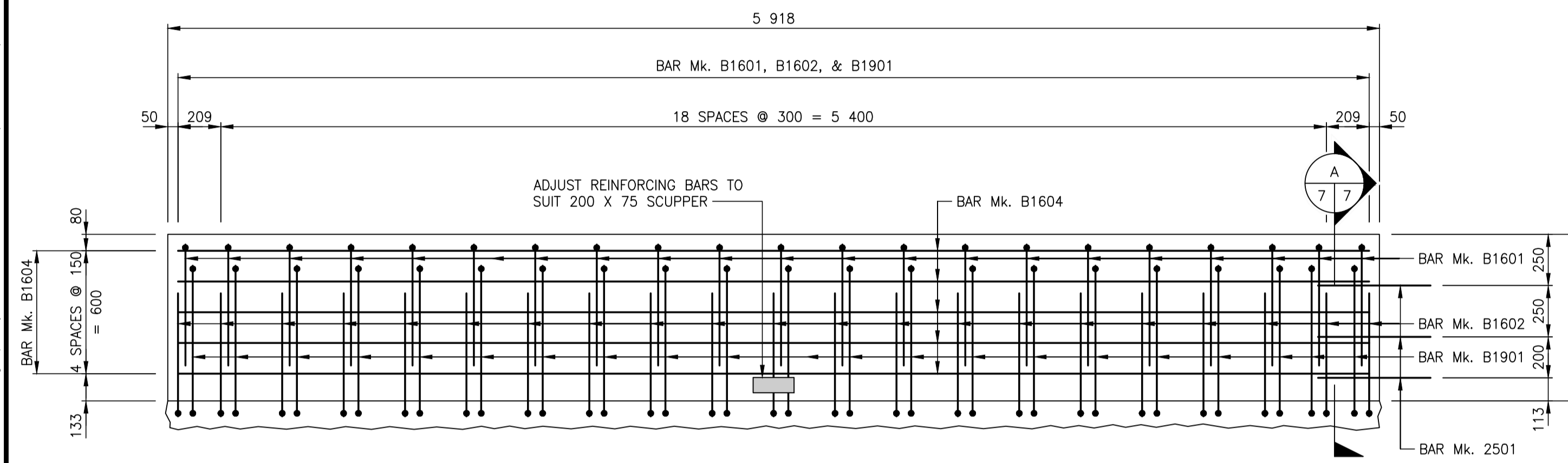


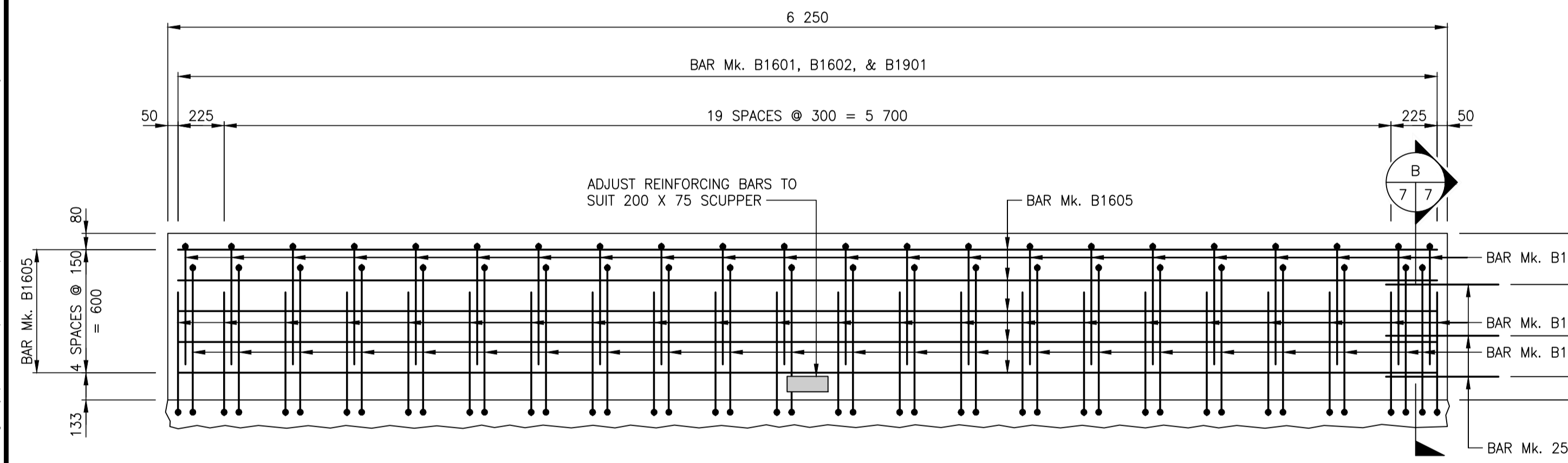
A1 SIZE (594 mm x 841 mm) | Last saved by: dbriff | File: P:\2017\17m-02091-00 - Professional consulting services for chief peguis greenway extension from main street to henderson highway\WSP DWG\Structure\17m-02091-00_CPT_Greenway_DD_06-08_concrete_barrier_details.dwg | Layout: 7 Traffic Barrier Details (Sheet 2 of 3) | Plot: February 22, 2018 at 12:57:47 PM



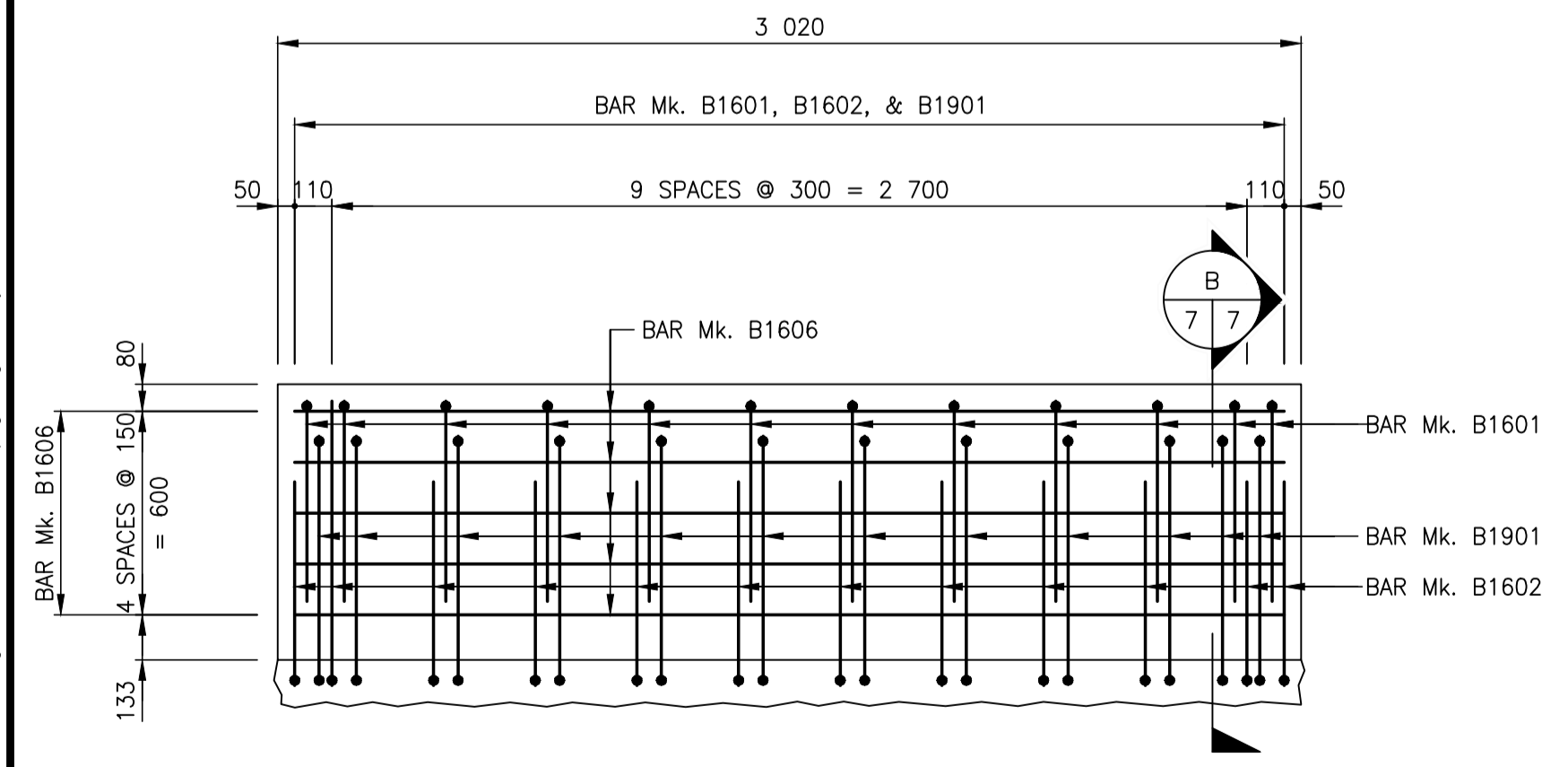
CONCRETE TRAFFIC BARRIER – TYPE "A"
SCALE 1:20



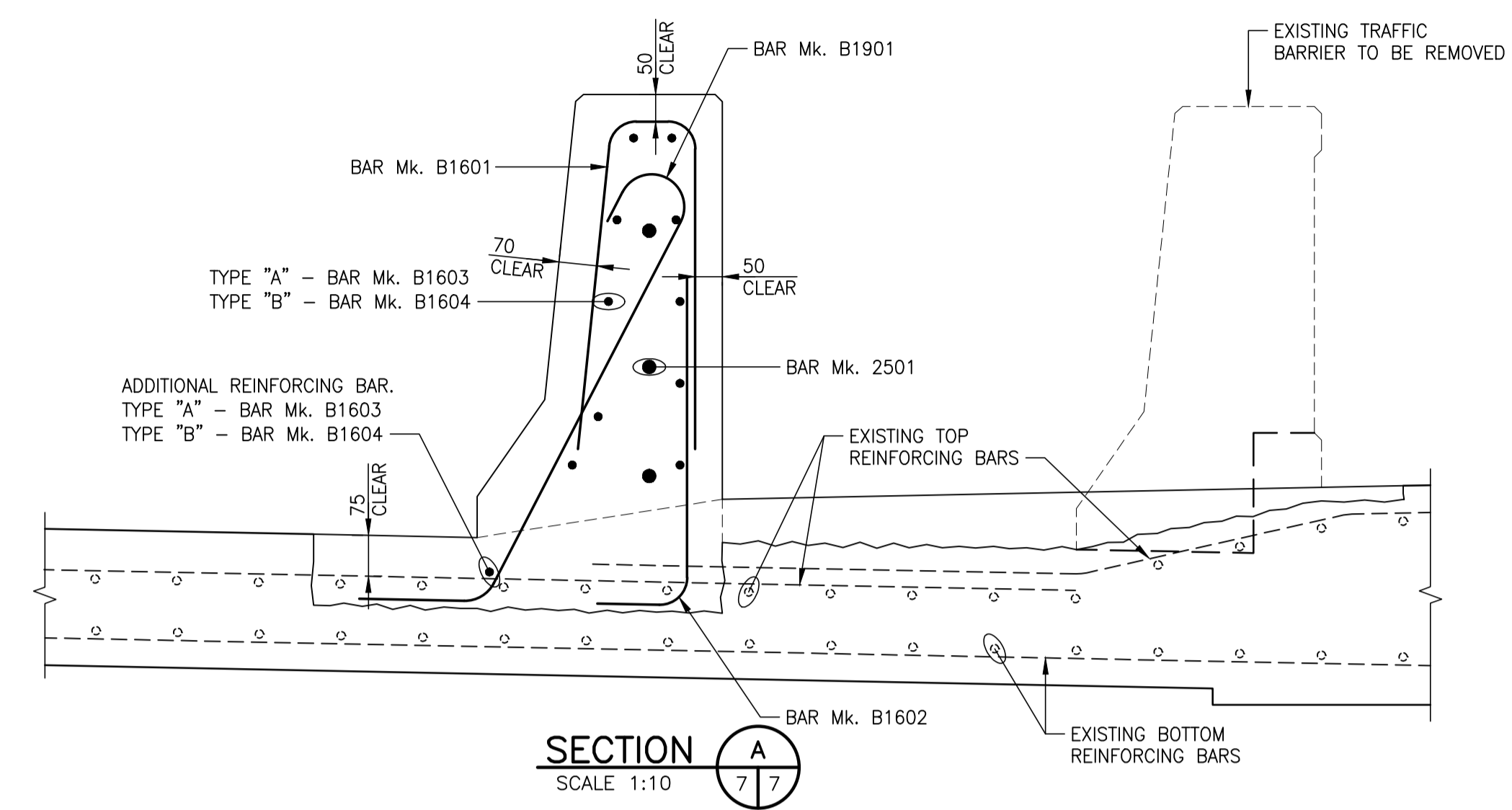
CONCRETE TRAFFIC BARRIER – TYPE "B"
SCALE 1:20



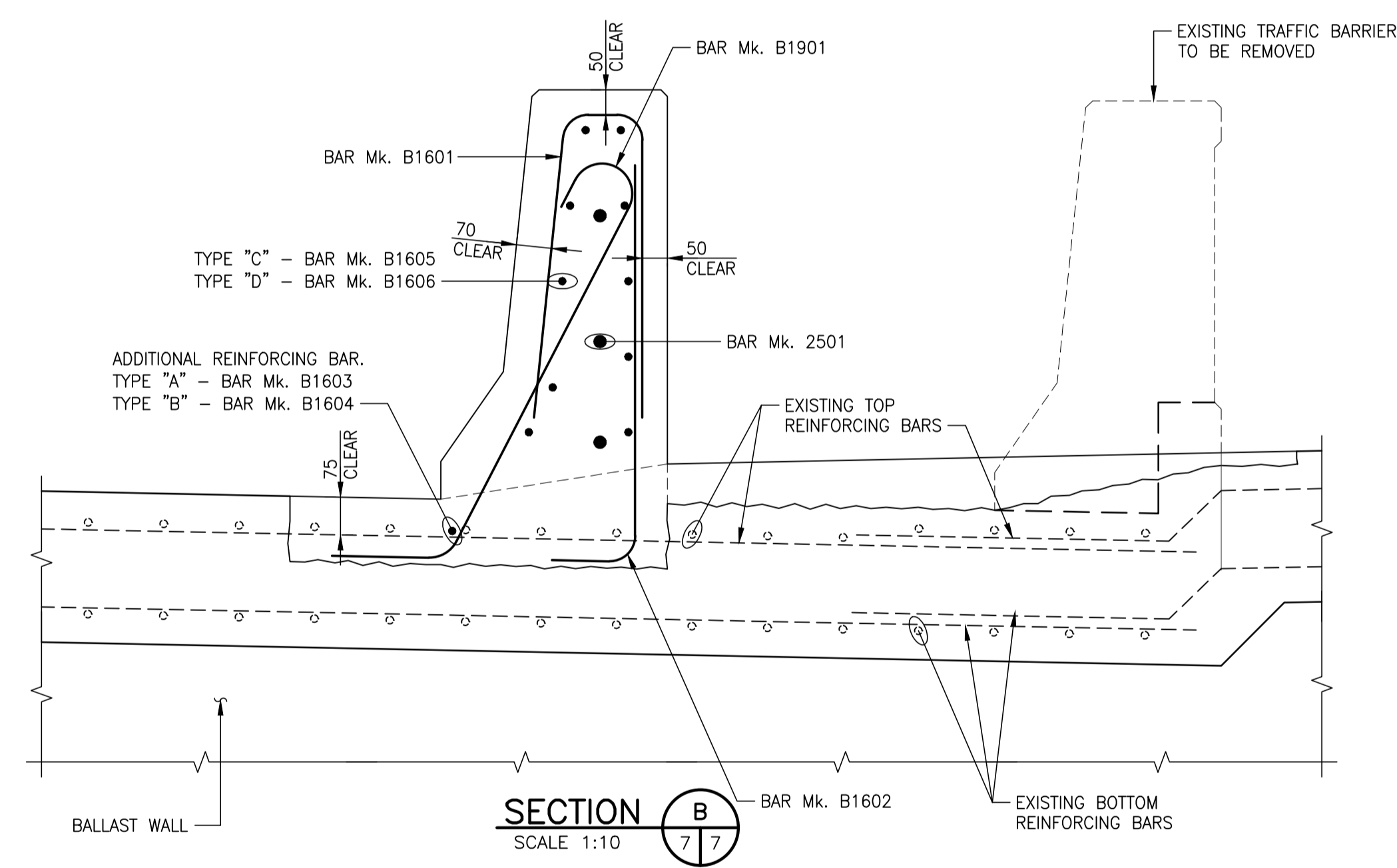
CONCRETE TRAFFIC BARRIER – TYPE "C"
SCALE 1:20



CONCRETE TRAFFIC BARRIER – TYPE "D"
SCALE 1:20



SECTION A
SCALE 1:10



SECTION B
SCALE 1:10

NOTE

- 1. FOR BILL OF REINFORCING STEEL, SEE SHEET 22.

LOCATIONS APPROVED UNDERGROUND STRUCTURES	
SIGNED BY:	DATE
SUPV U/G STRUCTURES	
LOCATION OF UNDERGROUND STRUCTURES AS SHOWN ARE BASED ON THE BEST INFORMATION AVAILABLE BUT NO GUARANTEE IS GIVEN THAT ALL EXISTING UTILITIES ARE SHOWN OR THAT THE GIVEN LOCATIONS ARE EXACT. CONFIRMATION OF EXISTENCE AND EXACT LOCATION OF ALL SERVICES MUST BE OBTAINED FROM THE INDIVIDUAL UTILITIES BEFORE PROCEEDING.	

G.B.M.	-
ELEV.	-
DESIGNED BY	BB
CHECKED BY	WC
DRAWN BY	FD
APPROVED BY	JL
HOR. SCALE	AS NOTED
VERTICAL	AS NOTED
RELEASING FOR CONSTRUCTION	
0 ISSUED FOR TENDER	18.02.23 JL
No. REVISIONS	DATE BY
	18.02.23

wsp WSP Canada Group Limited
93 Lombard Avenue, Suite 111
Winnipeg MB R3B 3B1
T+ 1 204-943-3178
F+ 1 204-943-4948
www.wsp.com

ENGINEER'S SEAL
PROVINCE OF MANITOBA
R.B. BOWLES
Member
34037
CONSULTANT ACAD DWG. No.
17M-02091-00-S-7

THE CITY OF WINNIPEG
PUBLIC WORKS DEPARTMENT
ENGINEERING DIVISION
CHIEF PEGUIS TRAIL - GREENWAY EXTENSION
KILDONAN SETTLERS BRIDGE MODIFICATIONS
TRAFFIC BARRIER DETAILS (SHEET 2 OF 3)

CITY DRAWING NUMBER: B216-18-07
SHEET 7 OF 26
BID OPPORTUNITY NUMBER: 4-2018

ENGINEERS GEOSCIENTISTS MANITOBA
Certificate of Authorization
WSP Canada Group Limited
No. 6657

METRIC
WHOLE NUMBERS INDICATE MILLIMETRES
DECIMALIZED NUMBERS INDICATE METRES

NOTE: These design documents are prepared solely for the use by the party with whom the design professional has entered into a contract and there are no representations of any kind made by the design professional to any party with whom the design professional has not entered into a contract.