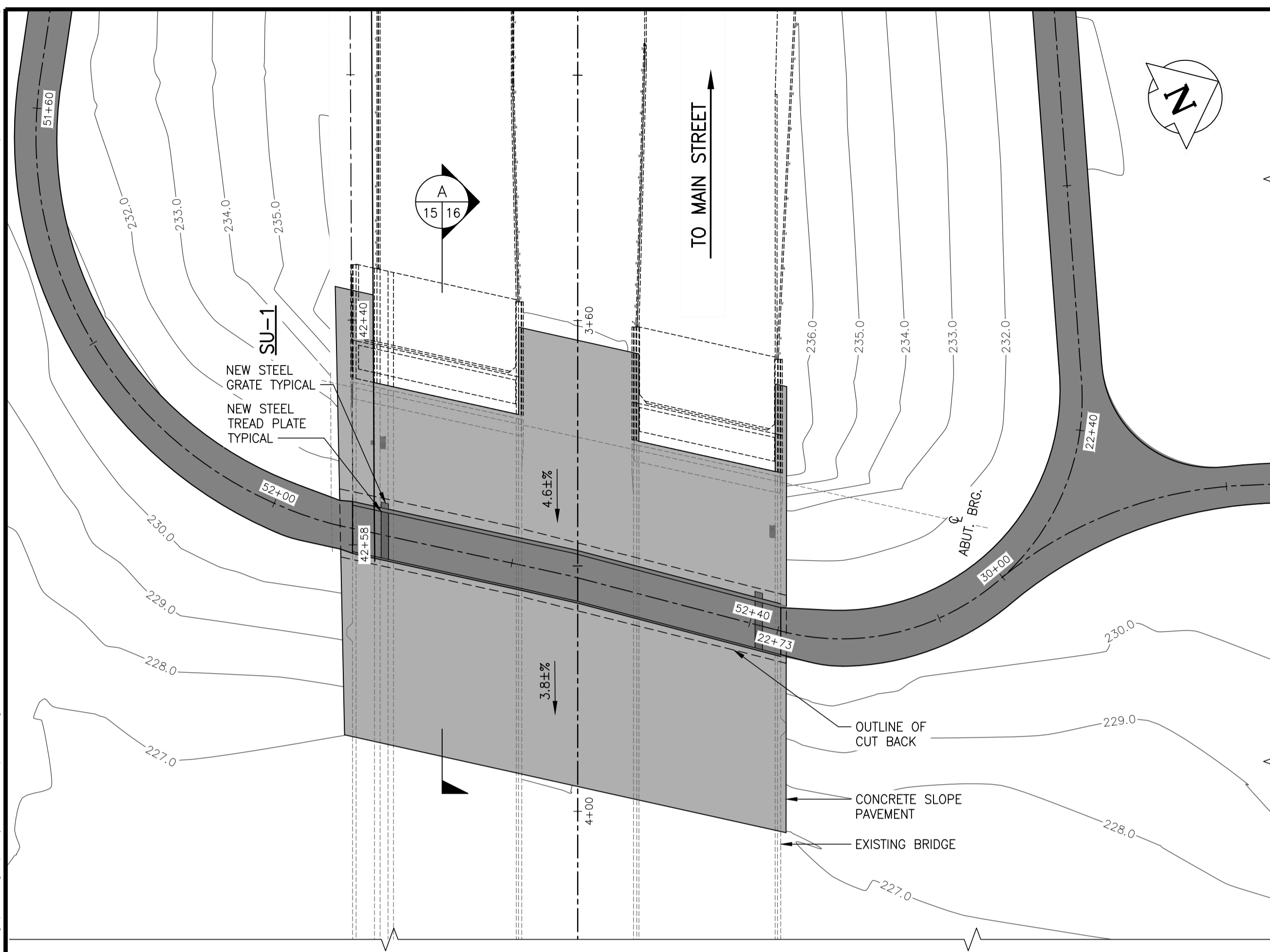
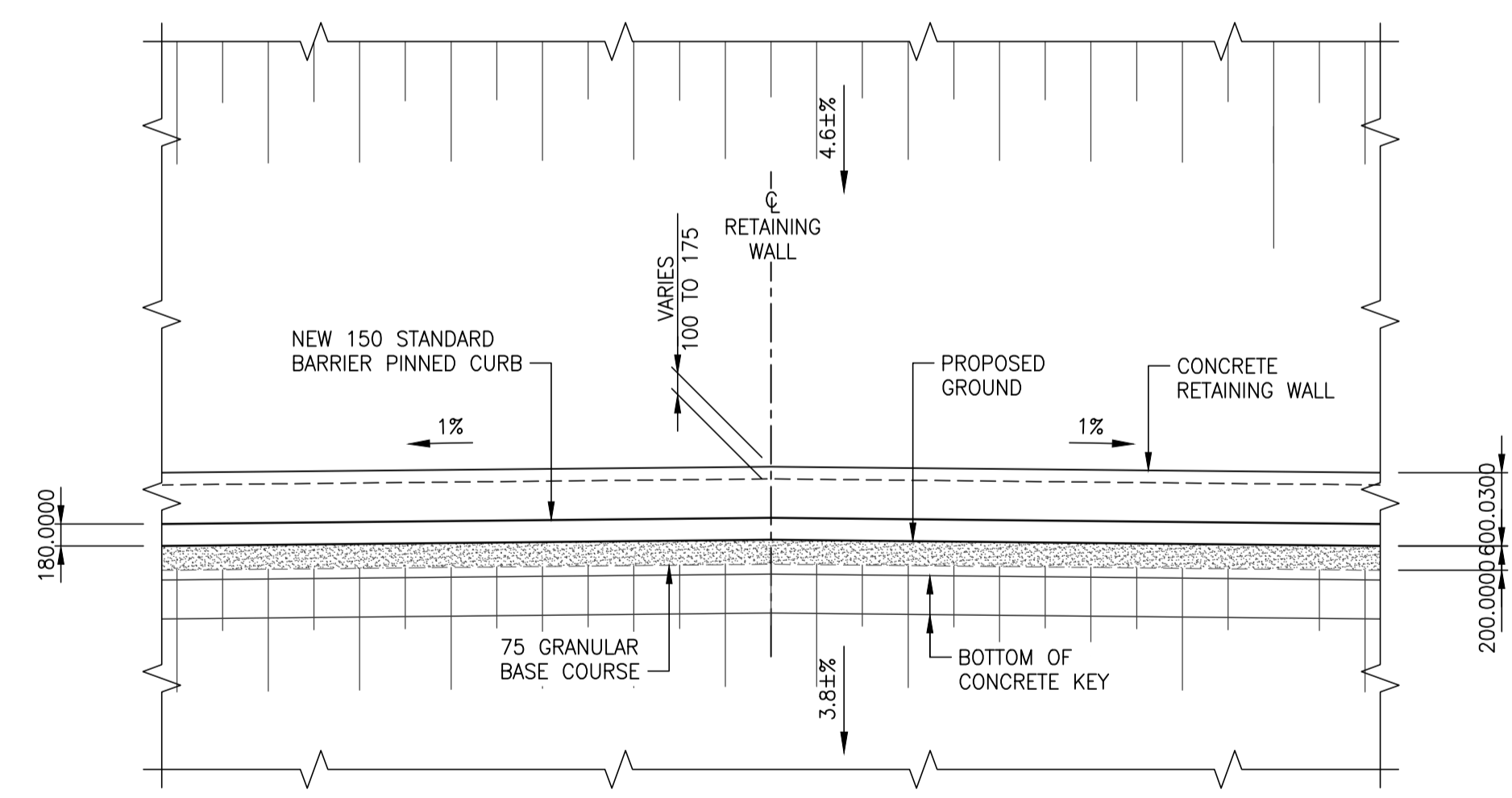


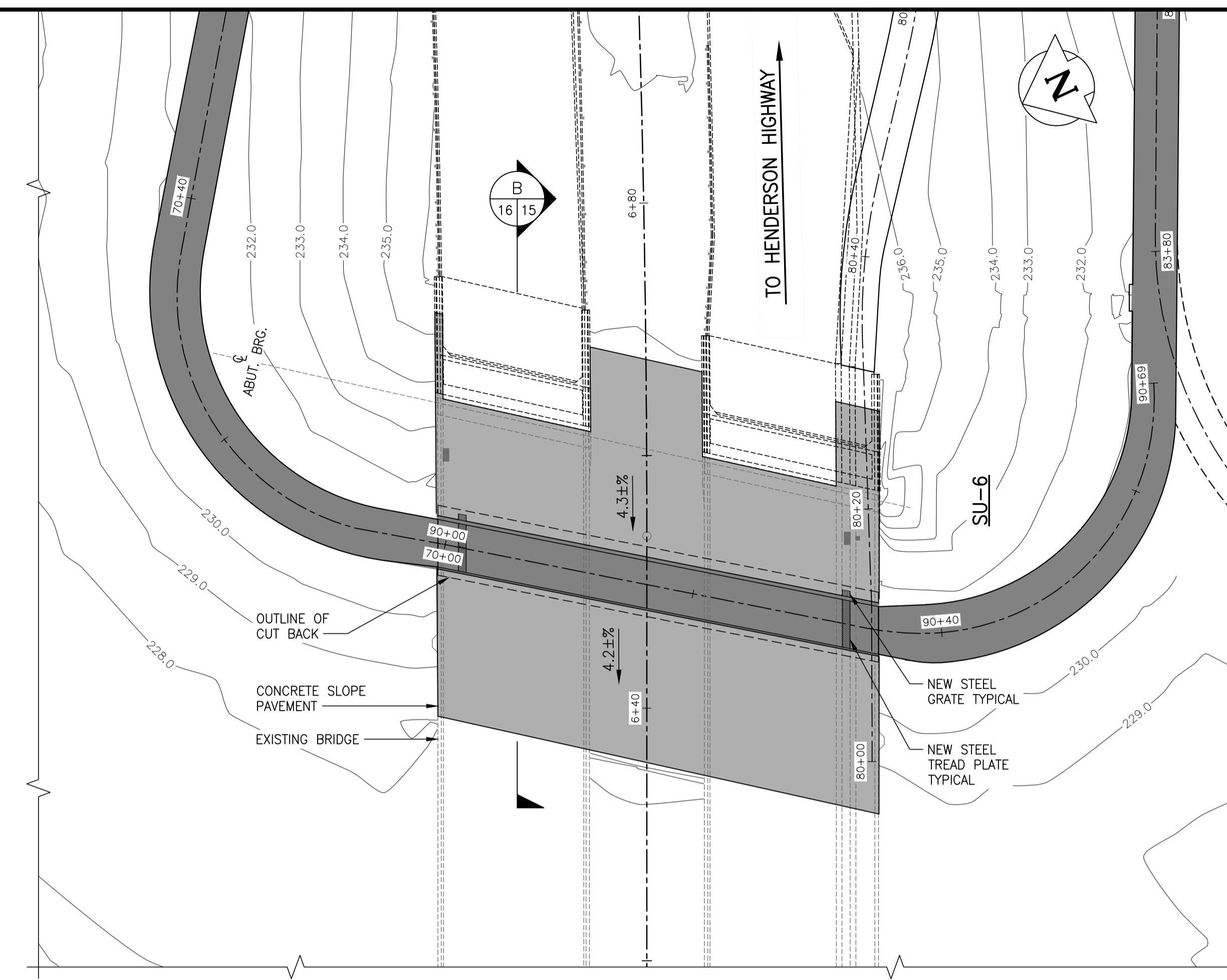
A1 SIZE (594 mm x 841 mm) | Layout: 15 Slope Paving Modification Plans and Elevations | Layout: 15 slope paving plan.dwg | WSP Canada Group Limited | 17-02091-00 CPT Greenway DD 15 slope paving plan.dwg | Last saved by: Barry K. | February 22, 2018 at 12:58:43 PM | File: P:\2017\17m-02091-00 - professional consulting services for chief peguis greenway extension from main street to henderson highway\WSP_DWG_Structural\17m-02091-00_CPT_Greenway_DD_15_slope_paving_plan.dwg



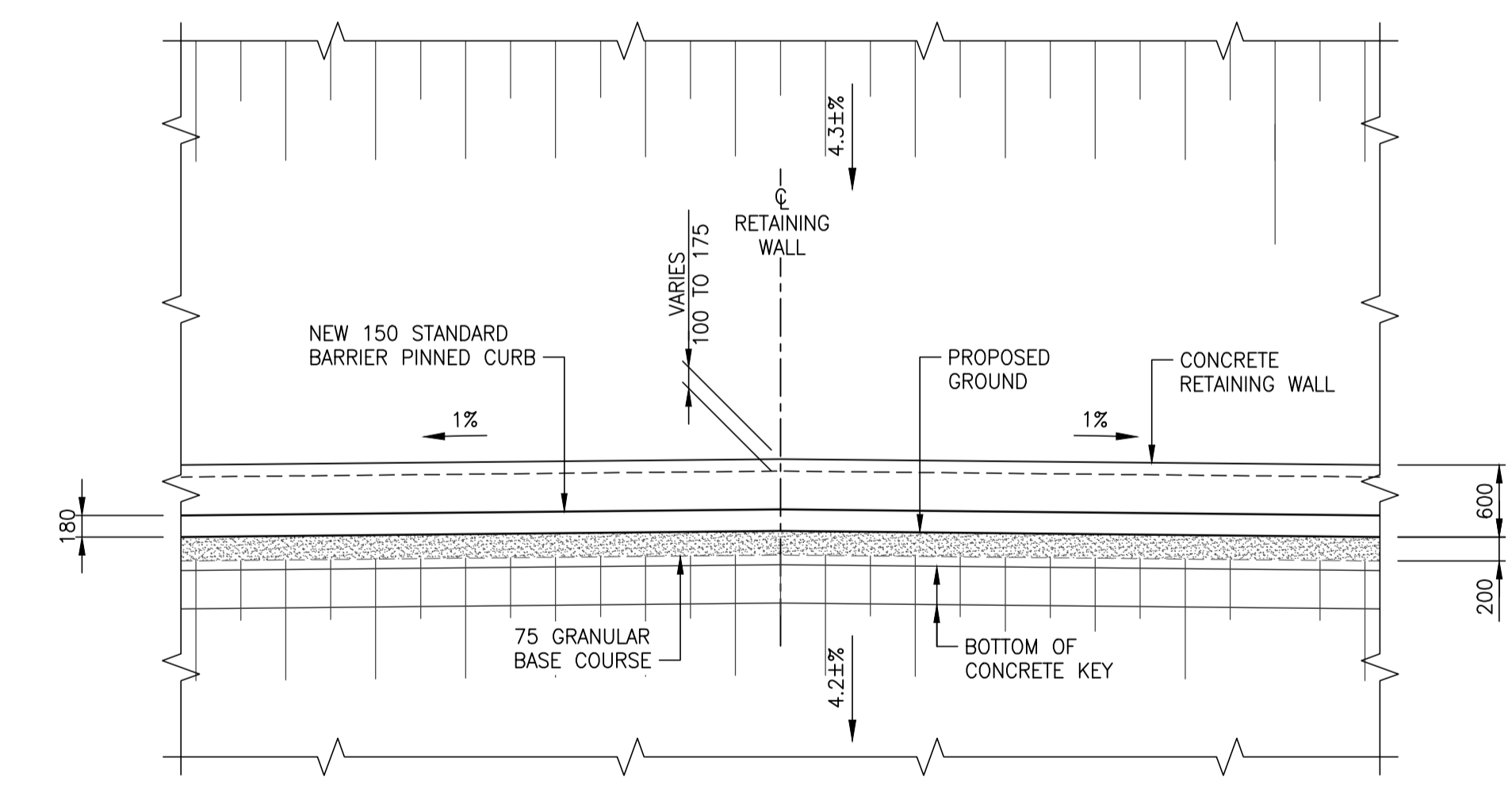
**SLOPE PAVING MODIFICATION
WEST SLOPE PLAN**
SCALE 1:300



**SLOPE PAVING MODIFICATION
WEST SIDE ELEVATION**
(LOOKING WEST)
SCALE 1:50



**SLOPE PAVING MODIFICATION
EAST SLOPE PLAN**
SCALE 1:300



**SLOPE PAVING MODIFICATION
WEST SIDE ELEVATION**
(LOOKING WEST)
SCALE 1:50

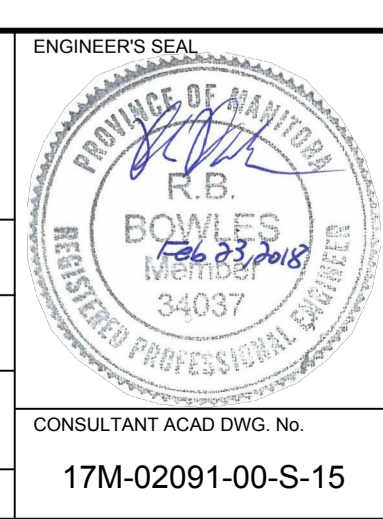
NOTE

- SEE SHEET 3 FOR "MAJOR ITEMS OF WORK".
- ALL GEOMETRY AND DIMENSIONS TO ALL EXISTING ELEMENTS HAVE BEEN REPRODUCED FROM THE ORIGINAL 1990 RECORD DRAWINGS AND HAVE NOT BEEN VERIFIED BY WSP CANADA GROUP LIMITED.



LOCATIONS APPROVED UNDERGROUND STRUCTURES		G.B.M.	ELEV.
SIGNED BY:	DATE		
SUPV U/G STRUCTURES			
LOCATION OF UNDERGROUND STRUCTURES AS SHOWN ARE BASED ON THE BEST INFORMATION AVAILABLE BUT NO GUARANTEE IS GIVEN THAT ALL EXISTING UTILITIES ARE SHOWN OR THAT THE GIVEN LOCATIONS ARE EXACT. CONFIRMATION OF EXISTENCE AND EXACT LOCATION OF ALL SERVICES MUST BE OBTAINED FROM THE INDIVIDUAL UTILITIES BEFORE PROCEEDING.			
No.	REVISIONS	DATE	BY
0	ISSUED FOR TENDER	18.02.23	JL

wsp		WSP Canada Group Limited 93 Lombard Avenue, Suite 111 Winnipeg MB R3B 3B1 T+ 1 204-943-3178 F+ 1 204-943-4948 www.wsp.com	
DESIGNED BY	BB	CHECKED BY	WC
DRAWN BY	KB	APPROVED BY	JL
HOR. SCALE	AS NOTED	RELEASED FOR CONSTRUCTION	
VERTICAL	AS NOTED		
No.	REVISIONS	DATE	BY
0	ISSUED FOR TENDER	18.02.23	JL



METRIC
WHOLE NUMBERS INDICATE MILLIMETRES
DECIMALIZED NUMBERS INDICATE METRES

THE CITY OF WINNIPEG
PUBLIC WORKS DEPARTMENT
ENGINEERING DIVISION

Winnipeg

CHIEF PEGUIS TRAIL - GREENWAY EXTENSION
KILDONAN SETTLERS BRIDGE MODIFICATIONS

SLOPE PAVING MODIFICATION PLANS AND ELEVATIONS

CITY DRAWING NUMBER: B216-18-15
SHEET 15 OF 26
BID OPPORTUNITY NUMBER: 4-2018

NOTE: These design documents are prepared solely for the use by the party with whom the design professional has entered into a contract and there are no representations of any kind made by the design professional to any party with whom the design professional has not entered into a contract.