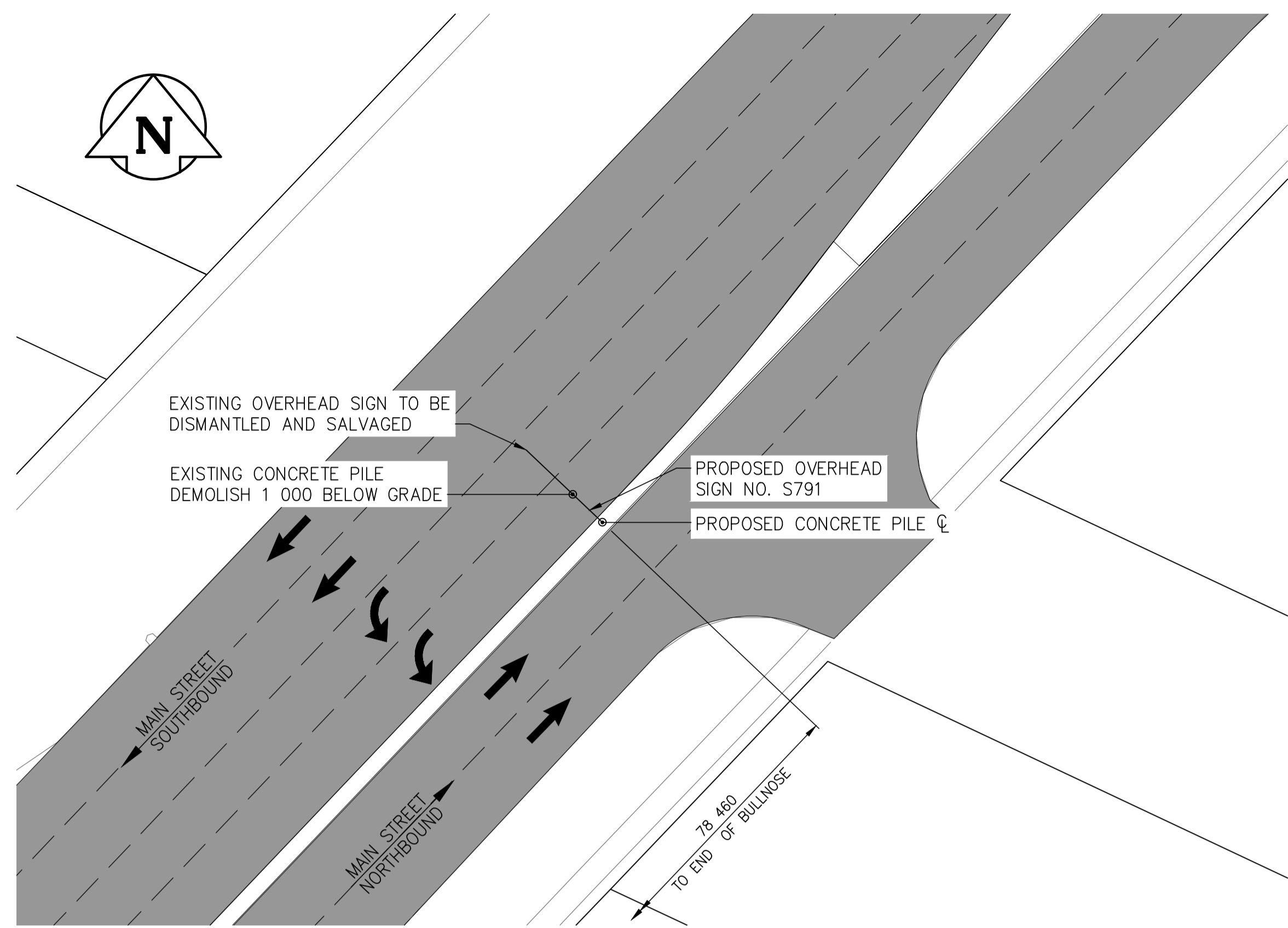
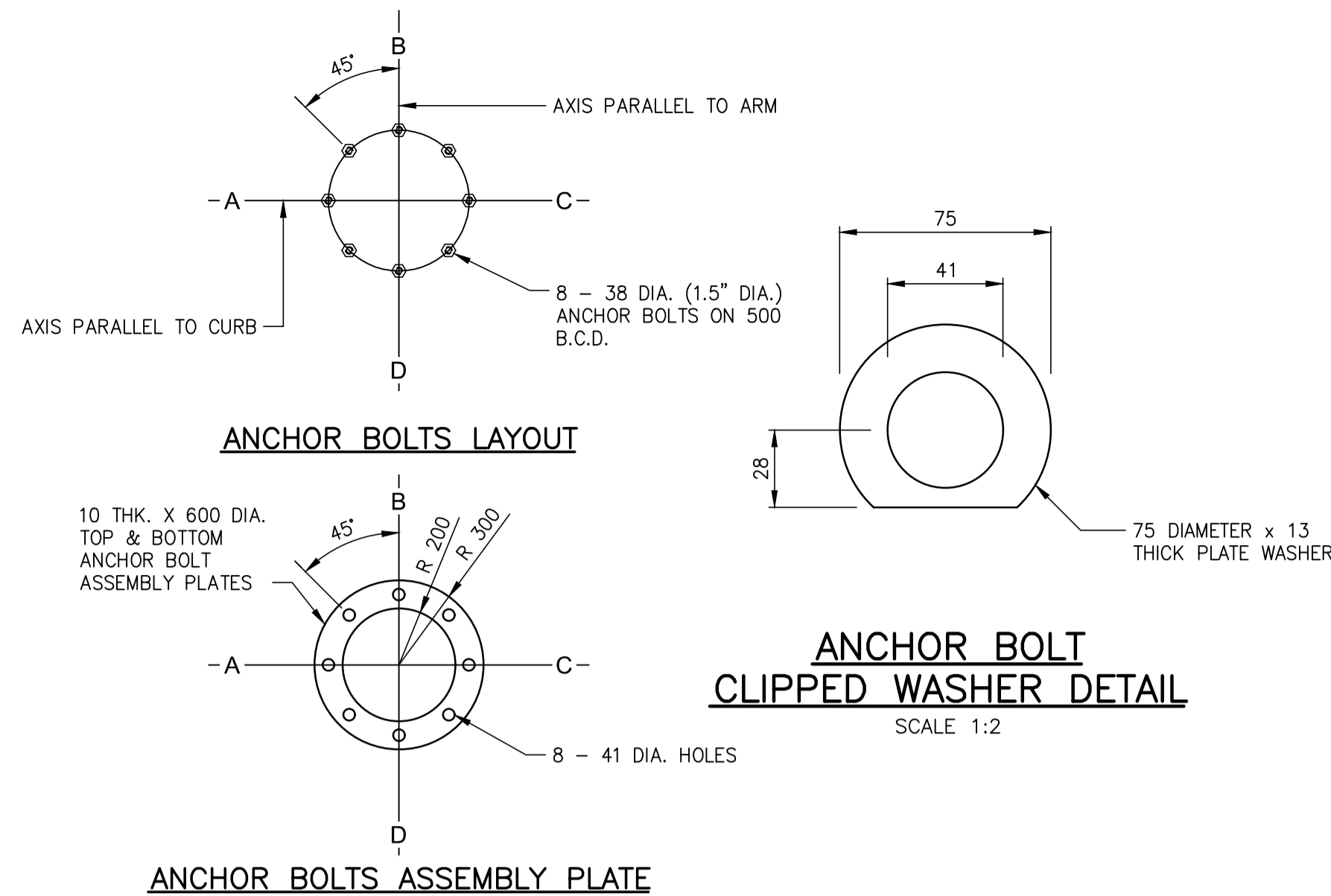


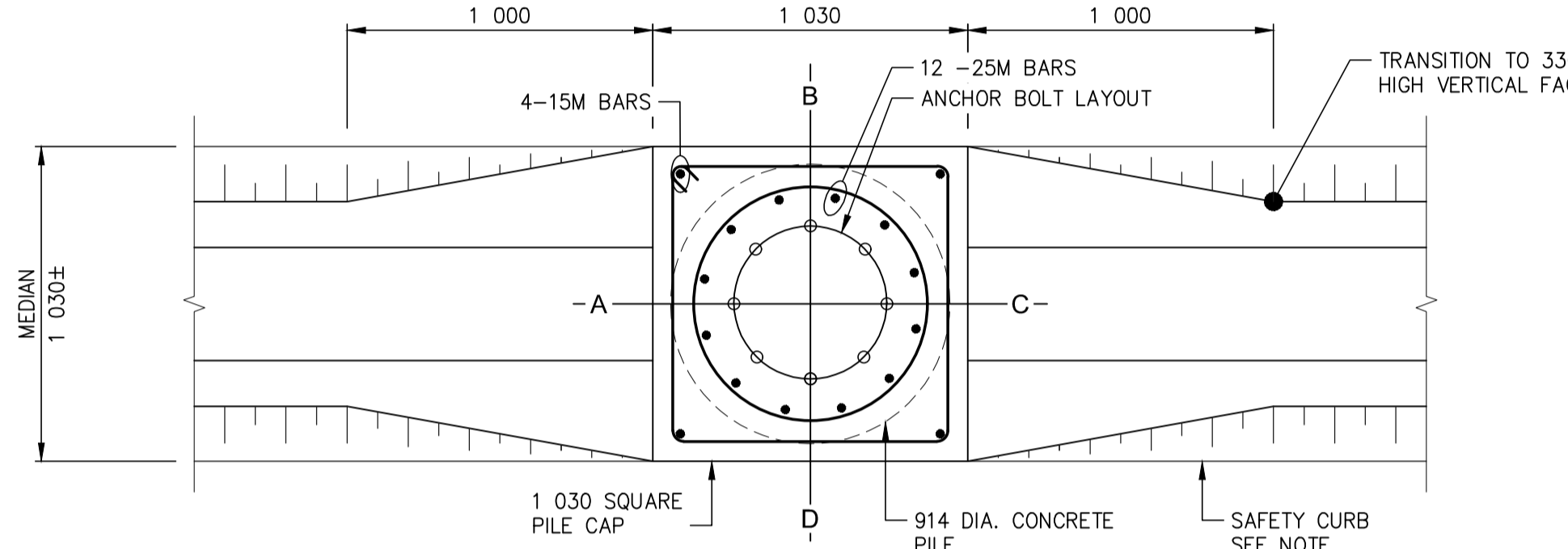
A1 SIZE (594 mm x 841 mm) | Layout: 24 Main Street at Chief Peguis Trail (Sheet 1 of 3) | Last saved by: patricia.s | February 22, 2018 at 12:59:51 PM | File: P:\2017\17m-02091-00 - Professional consulting services for chief peguis greenway extension from main street to henderson highway\WSP_DWG\Structure\Overhead Sign Structure\17m-02091-00_CPT_Greenway_DD_24-26_OH_Sign.dwg



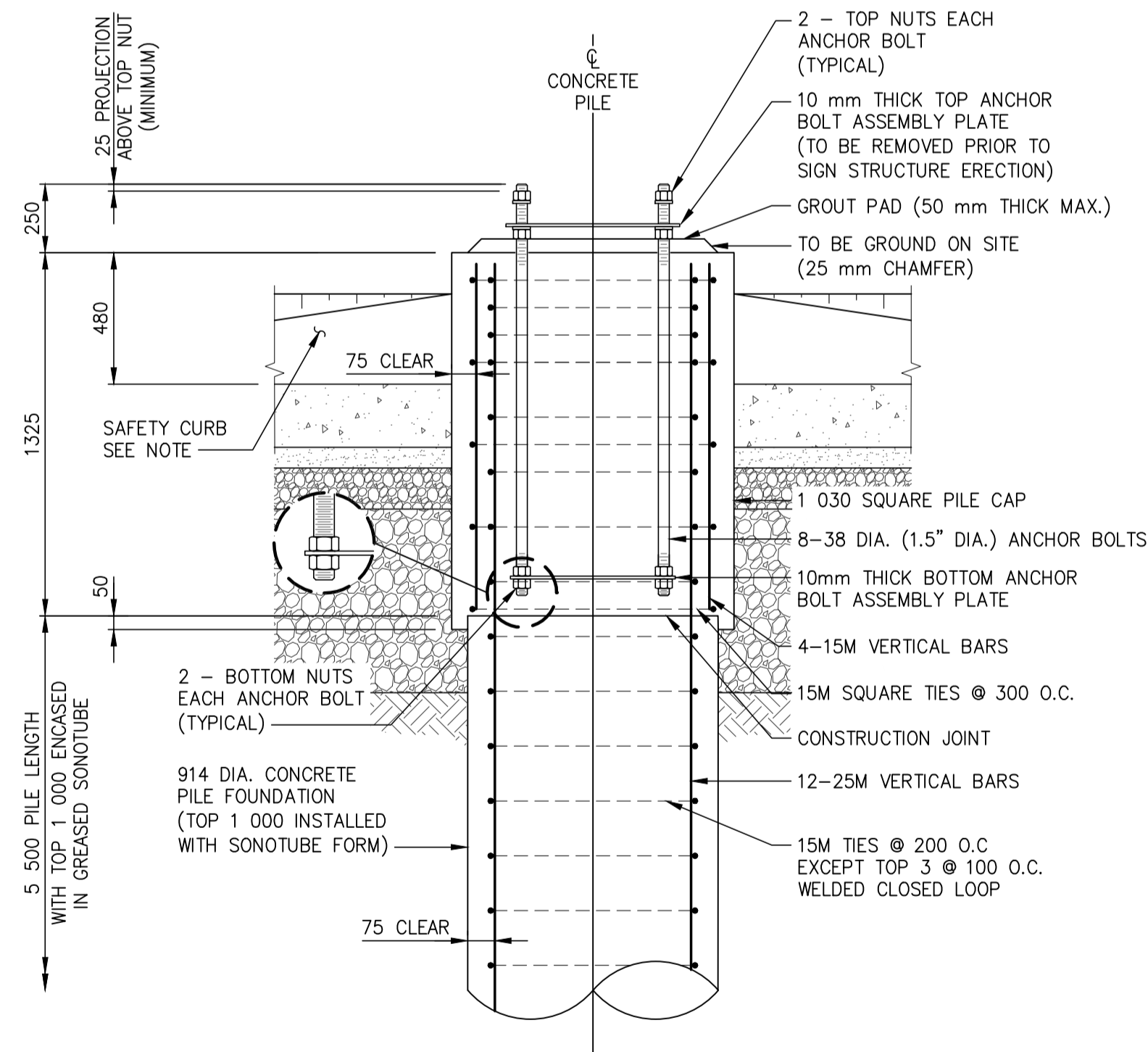
SITE PLAN
SCALE 1:250



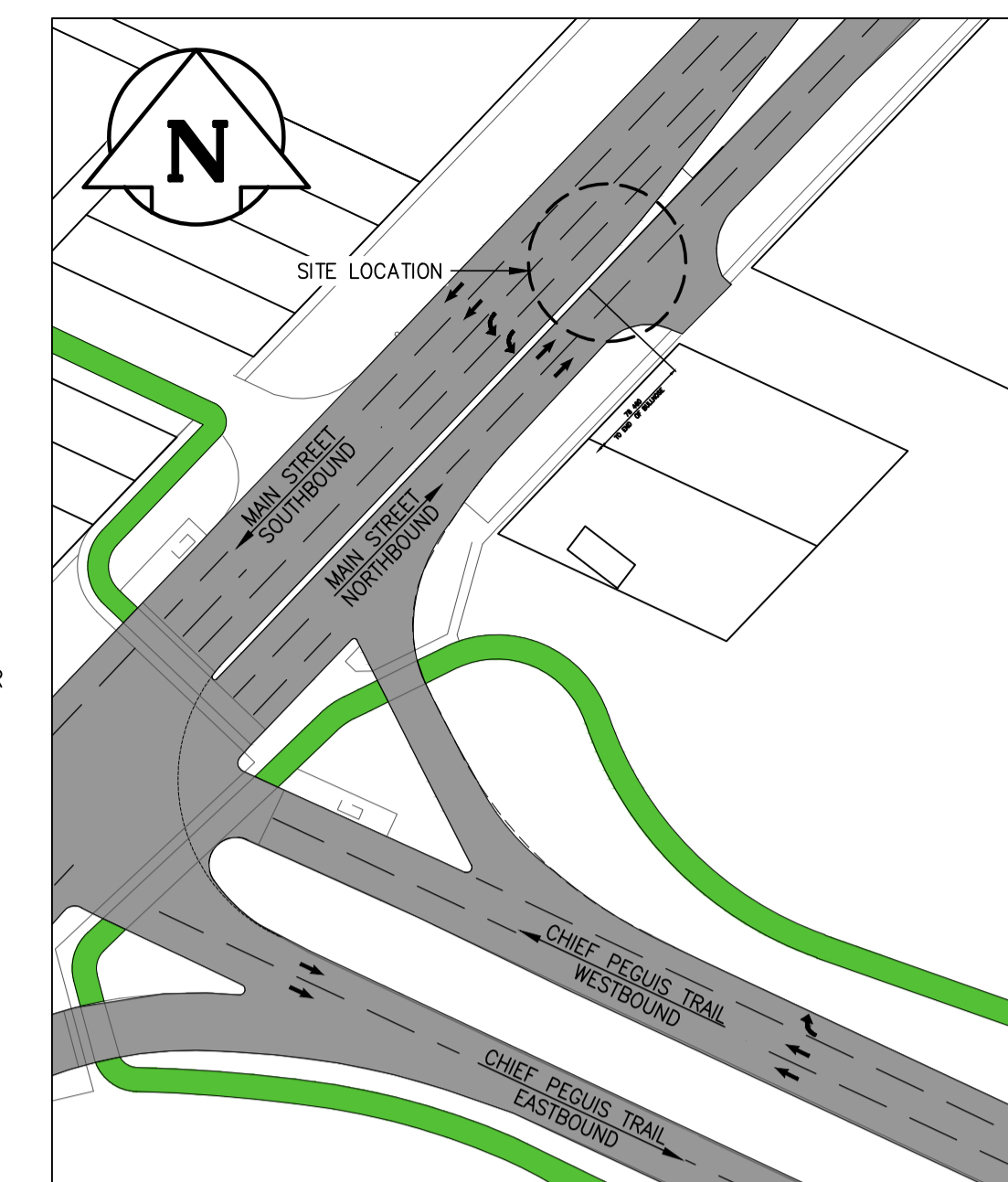
ANCHOR BOLTS ASSEMBLY PLATE



SECTION THROUGH TOP OF PILE CAP



CONCRETE PILE FOUNDATION DETAIL FOR S791
SCALE 1:20



KEY PLAN
SCALE 1:1000

PILE CONSTRUCTION NOTES

GENERAL NOTES

- ELEVATIONS TO BE VERIFIED BY CONTRACTOR PRIOR TO CASTING PILES FOR CONFORMANCE WITH ACTUAL ROAD GRADES.
- ALL CONCRETE STRAIGHT EDGES TO HAVE A 25 MM CHAMFER.

REINFORCING STEEL

- CSA G30.18 GRADE 400W.
- VERTICAL BARS FULL LENGTH OF PILE. SPLICES NOT PERMITTED.
- HOT DIP GALVANIZED TO ASTM A767.

ANCHOR BOLTS

- ASTM F1554 GR. 55.
- 8 - 38 DIA. (1.5" DIA.) x 1 500 LONG ANCHOR BOLTS THREADED BOTH ENDS (300 TOP & 150 BOTTOM), EACH BOLT COMPLETE WITH 4 NUTS AND 2 - 75 DIA. x 13 THICK PLATE WASHERS WITH ONE EDGE CLIPPED.
- ANCHOR BOLT CAGE ASSEMBLY HOT DIP GALVANIZED FULL LENGTH AFTER FABRICATION, IN ACCORDANCE WITH ASTM A153 (610 g/m²).
- B.C.D. = BOLT CIRCLE DIAMETER TO CENTER OF BOLT GROUP.
- ANCHOR BOLTS ALIGNED WITH TEMPORARY STEEL TEMPLATE. PLACEMENT OF ANCHOR BOLTS AND CONCRETE WITHOUT THE TEMPLATE NOT PERMITTED.
- TOP 1 000 mm PILE FOUNDATION FORMED WITH TUBULAR FORM (SONOTUBE).
- BASE TEMPLATE, NUTS AND FORM REMOVED BY CONTRACTOR FOLLOWING A MINIMUM 24 HOURS CURING PERIOD.
- FOLLOWING INSTALLATION OF THE STEEL OVERHEAD SIGN STRUCTURE, LEVELING NUTS SHALL BE TIGHTENED TO A SNUG TIGHT CONDITION, FOLLOWED BY 1/3 NUT ROTATION OF THE UPPER NUTS.

CONCRETE MIX DESIGN

- PROPORTIONING OF FINE AGGREGATE, COURSE AGGREGATE, CEMENT, WATER AND AIR ENTRAINING AGENT SHALL YIELD CONCRETE WITH THE REQUIRED STRENGTH AND WORKABILITY AS FOLLOWS, IN ACCORDANCE WITH CSA A23.1-14:

CLASS OF EXPOSURE: S-1

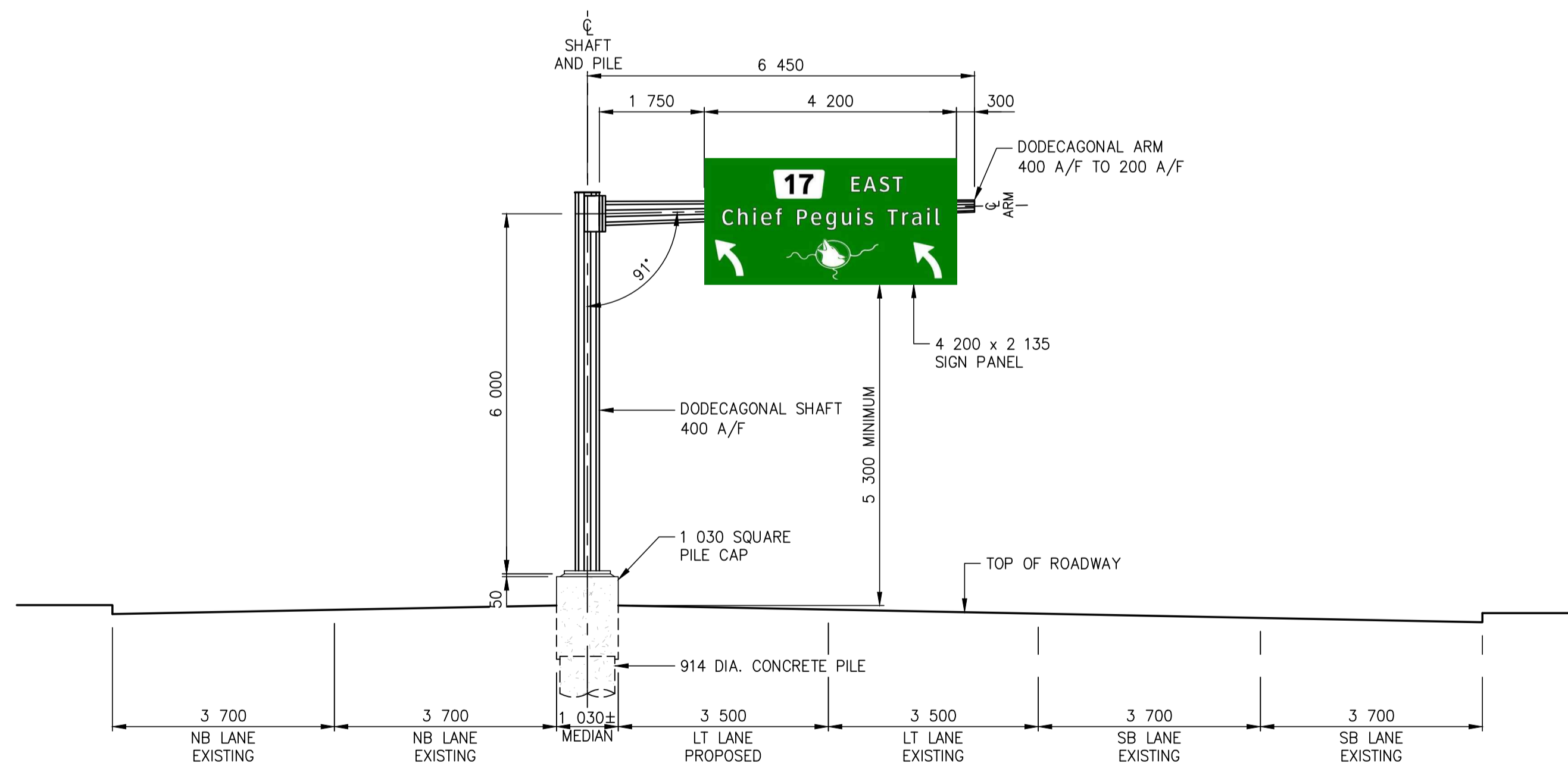
MINIMUM COMPRESSIVE STRENGTH AT 56 DAYS = 35 MPa.

AIR CONTENT CATEGORY 1: 5.0 TO 8.0 PERCENT.

CEMENT - TYPE HS OR HSB.

SAFETY CURB

- SAFETY CURB TO BE CONSTRUCTED AFTER PILE CONSTRUCTION. FIELD FIT CURB AND PILE CAP TO CONFORM TO THE ACTUAL MEDIAN DIMENSIONS, AS DIRECTED BY THE CONTRACT ADMINISTRATOR. PLACE POLYMER BONDBREAKER BETWEEN CURB AND PILE CAP CONCRETE.



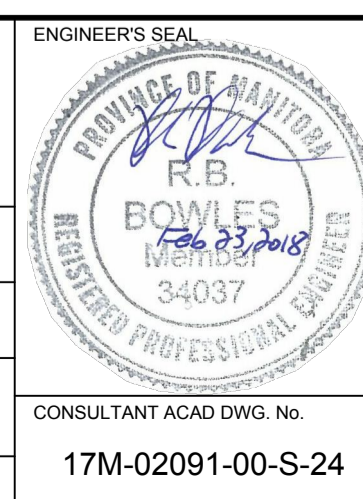
SITE ELEVATION (LOOKING SOUTH)
SCALE 1:75



LOCATIONS APPROVED UNDERGROUND STRUCTURES	
SIGNED BY:	DATE
SUPV U/G STRUCTURES	
LOCATION OF UNDERGROUND STRUCTURES AS SHOWN ARE BASED ON THE BEST INFORMATION AVAILABLE BUT NO GUARANTEE IS GIVEN THAT ALL EXISTING UTILITIES ARE SHOWN OR THAT THE GIVEN LOCATIONS ARE EXACT. CONFIRMATION OF EXISTENCE AND EXACT LOCATION OF ALL SERVICES MUST BE OBTAINED FROM THE INDIVIDUAL UTILITIES BEFORE PROCEEDING.	

G.B.M. - -	
ELEV. - -	
DESIGNED BY	KJS
DRAWN BY	KB
HOR. SCALE	AS NOTED
VERTICAL SCALE	AS NOTED
ISSUED FOR TENDER	18.02.23 JL
REVISIONS	DATE BY
0	18.02.23 JL

wsp	
WSP Canada Group Limited 93 Lombard Avenue, Suite 111 Winnipeg MB R3B 3B1 T+ 1 204-943-3178 F+ 1 204-943-4948 www.wsp.com	
DESIGNED BY	KJS
CHECKED BY	BB
DRAWN BY	KB
APPROVED BY	JL
RELEASED FOR CONSTRUCTION	
DATE	18.02.23



THE CITY OF WINNIPEG PUBLIC WORKS DEPARTMENT ENGINEERING DIVISION		CITY DRAWING NUMBER B216-18-24
CHIEF PEGUIS TRAIL - GREENWAY EXTENSION OVERHEAD SIGN STRUCTURE		SHEET 24 OF 26
S791 - MAIN STREET AT CHIEF PEGUIS TRAIL (SHEET 1 OF 3)		BID OPPORTUNITY NUMBER 4-2018

METRIC

WHOLE NUMBERS INDICATE MILLIMETRES
DECIMALIZED NUMBERS INDICATE METRES

NOTE: These design documents are prepared solely for the use by the party with whom the design professional has entered into a contract and there are no representations of any kind made by the design professional to any party with whom the design professional has not entered into a contract.