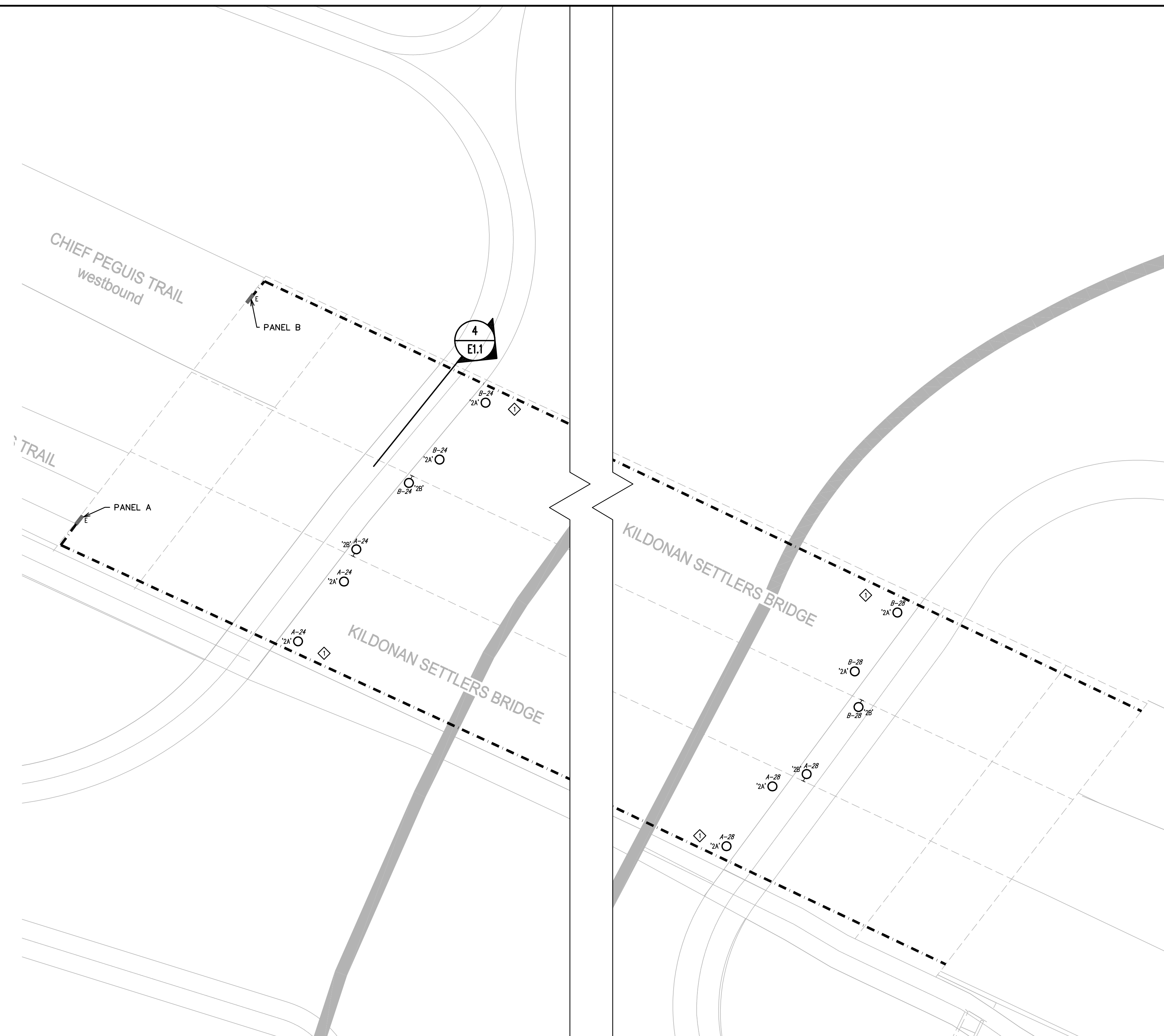
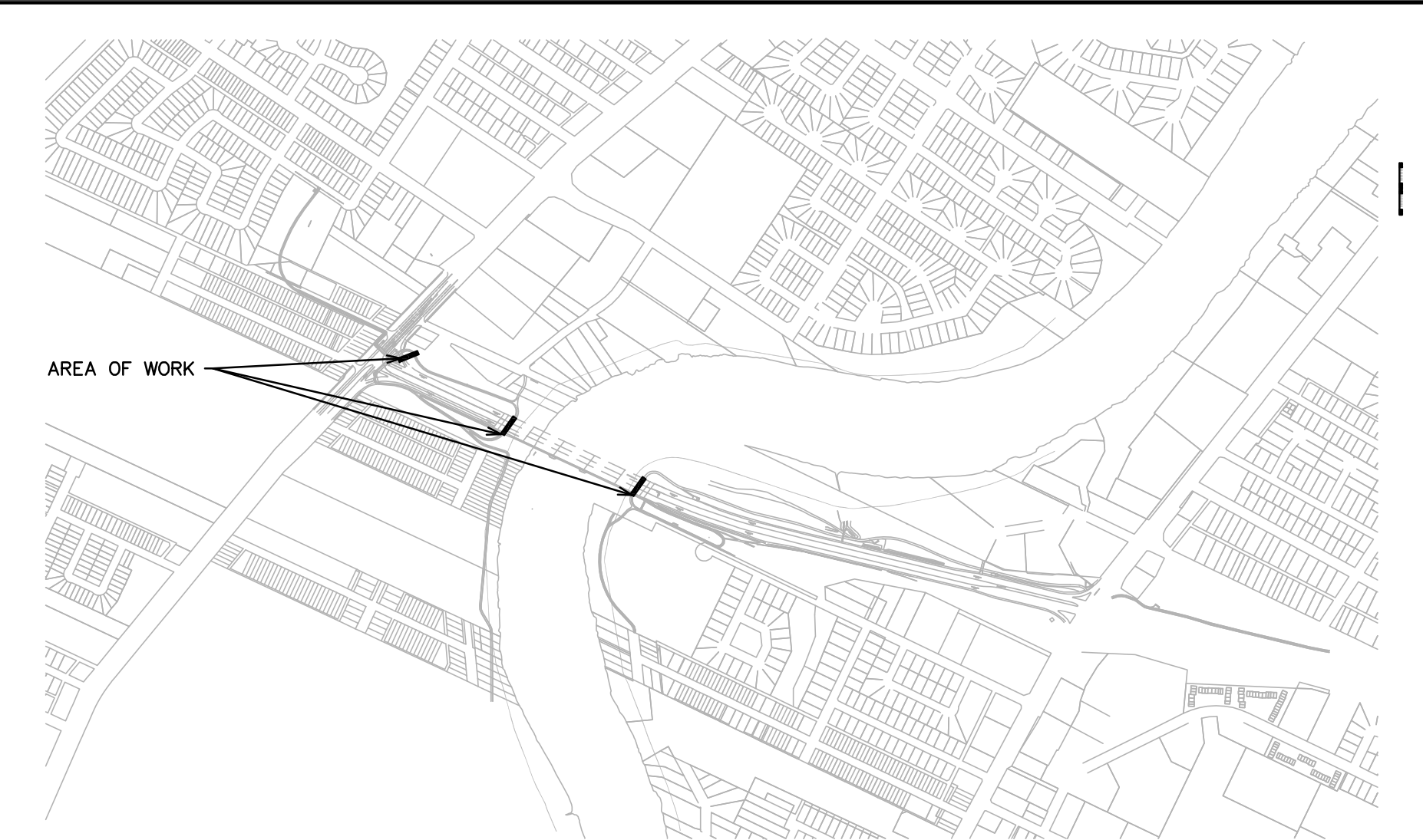


1 CHIEF PEGUIS TR. & MAIN ST. - ELECTRICAL LAYOUT
E1.1 SCALE: 1:250

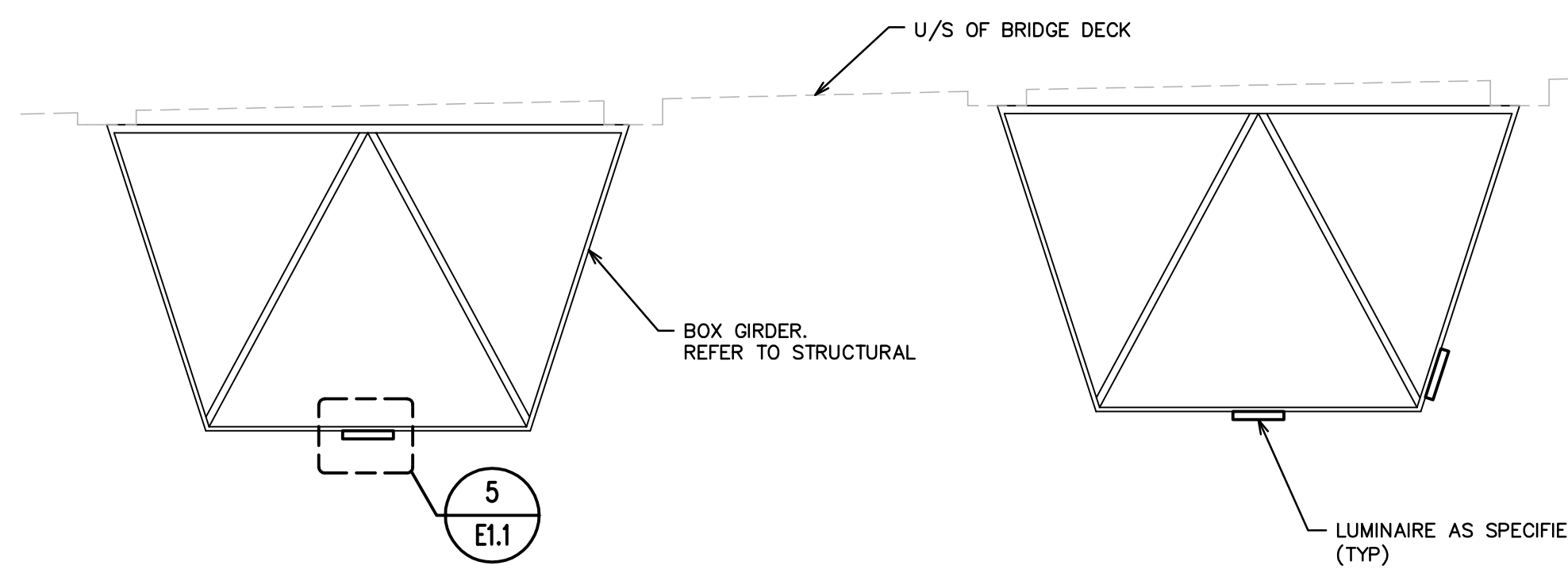


2 KILDONAN SETTLERS BRIDGE LIGHTING - WEST ABUTMENT
E1.1 SCALE: 1:250

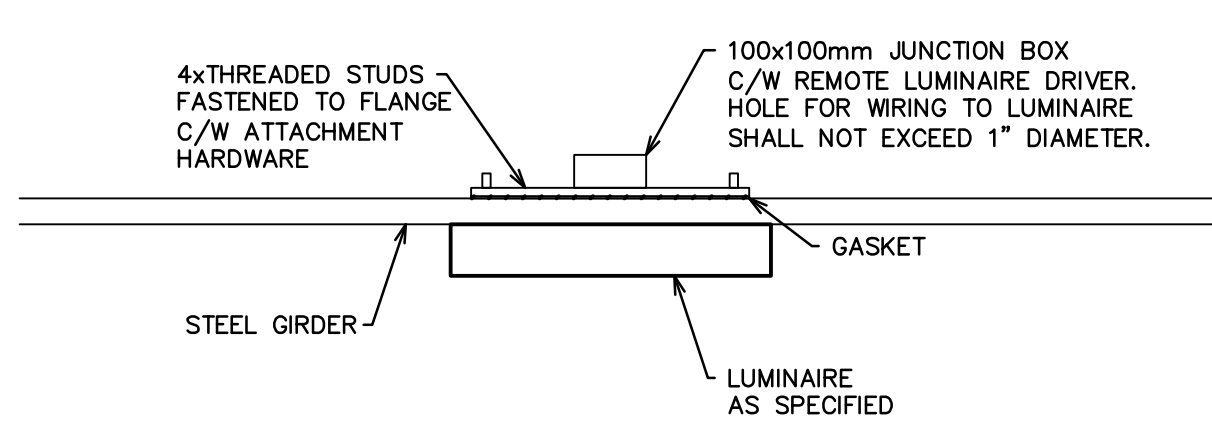
3 KILDONAN SETTLERS BRIDGE LIGHTING - EAST ABUTMENT
E1.1 SCALE: 1:250



6 KEY PLAN
E1.1 SCALE: N.T.S.



4 KILDONAN SETTLERS BRIDGE LIGHTING - TYPICAL LIGHTING ARRANGEMENT
E1.1 SCALE: N.T.S.



5 TYPICAL LUMINAIRE MOUNTING DETAIL
E1.1 SCALE: N.T.S.

LUMINAIRE SCHEDULE						
TYPE	MANUFACTURER	CATALOGUE NO.	VOLTS	LAMP	TOTAL WATTS FOR LUM	REMARKS
1	HOLOPHANE OR EQUAL	AWDE2 P20 30K AS M BK 3 N S BK DE GVDHSS18	120	3000K LED	28	ACORN STYLE POST-TOP LUMINAIRE CW 180-DEGREE HOUSE SIDE SHIELD. BUG RATING 0-4-2. HOUSE SIDE SHIELD PAINTED BLACK TO MATCH HOUSING FINISH.
2A	NEWSTAR LIGHTING	AGV-2x2-OP-UN-30	120	3000K LED	40	CEILING MOUNTED EXTERIOR FLOOD LIGHT WITH REMOTE DRIVER AND VANDAL GUARD.
2B	NEWSTAR LIGHTING	AGV-2x2-OP-UN-30	120	3000K LED	40	WALL MOUNTED EXTERIOR FLOOD LIGHT WITH REMOTE DRIVER AND VANDAL GUARD.

GENERAL NOTES:

- VERIFY LOCATIONS OF UTILITIES AND PROTECT ALL ELECTRICAL EQUIPMENT DURING CONSTRUCTION.
- COORDINATE POLE FOOTINGS AND POWER LOCATIONS WITH CIVIL AND LANDSCAPE DRAWINGS.
- CONDUIT TRENCH LINE IS SHOWN FOR APPROXIMATE ROUTING. CONTRACTOR SHALL CONFIRM AND COORDINATE ROUTING OF CONDUIT WITH SITE CONDITIONS.
- WHERE CONDUIT IS MOUNTED ON THE STEEL GIRDER, FASTENERS SHALL NOT BE ATTACHED TO THE GIRDER WEB OR FLANGE UNLESS OTHERWISE REVIEW OR ACCEPTED BY THE CONTRACT ADMINISTRATOR (I.E. FASTENERS ATTACHED TO THE STIFFENERS OR CROSS-FRAMES).
- WHERE CONDUIT IS MOUNTED TO THE DECK SOFFIT, PROVIDE ANCHORS SUITABLE OR RATED FOR DYNAMIC LOADING.
- FASTENERS WITHIN OR ATTACHED TO BRIDGE SHALL BE 316 STAINLESS STEEL 3/16" DIAMETER (OR METRIC EQUIVALENT).

NOTES:

- RELOCATE EXISTING CONDUIT AND WIRING AS REQUIRED TO ACCOMMODATE NEW DECK DRAINS. REFER TO STRUCTURAL DRAWINGS FOR EXACT LOCATION OF WORK TO BE PERFORMED. COORDINATE REQUIREMENTS ON SITE.
- REPLACE EXISTING WIDE CIRCUIT BREAKERS SUPPLYING RECEPTACLES WITH NEW 15A/1P NARROW CIRCUIT BREAKERS. PROVIDE TWO (2) NEW 15A/1P NARROW CIRCUIT BREAKERS TO ACCOMMODATE NEW LIGHTING LOADS AS INDICATED.
- PROVIDE ONE (1) 53mm (2") U/G PVC CONDUIT FROM NEW BUS-SHELTER FOUNDATION TO FUTURE MANITOBA HYDRO SERVICE. POINT LOCATION, STUB CONDUIT & AFC ON BOTH ENDS. PROVIDE CAP AND WATER TIGHT SEAL TO PREVENT WATER ENTRY. CONDUIT SHALL BE BURIED 1.5m BELOW FINISHED GRADE OF NEW CONCRETE ROADWAY. COORDINATE DEPTH AND STUB LOCATIONS ON-SITE WITH CONTRACT ADMINISTRATOR.

PANEL	PANEL A (FPE STABLOK)						FED FROM:		PANEL A	
VOLTAGE:	120/208V/1Ø/3W		225A MAINS				MOUNTING:	RECESSED (FLUSH)		
POWER:							POWER:	NORMAL		
DESCRIPTION	LOAD	BRKR	CCT	PHASE	CCT	BRKR	LOAD	DESCRIPTION		
ABUTMENT & PNL LTS (WIDE)	15	1	A	2	15			NAVIGATION LTG (WIDE)		
	15	3	B	4	15					
GIRDER #4 LTS (WIDE)	15	5	A	6	15			GIRDER #3 LTS (WIDE)		
	15	7	B	8	15					
GIRDER #4 LTS (WIDE)	15	9	A	10	15			GIRDER #3 LTS (WIDE)		
	15	11	B	12	15					
GIRDER #4 LTS (WIDE)	15	13	A	14	15			GIRDER #3 LTS (WIDE)		
	15	15	B	16	15					
GIRDER #4 LTS (WIDE)	15	17	A	18	15			GIRDER #3 LTS (WIDE)		
	15	19	B	20	15					
GIRDER #4 REC (NARROW)	15	21	A	22	15			GIRDER #3 REC (NARROW)		
	15	23	B	24	15	150		PATHWAY LTS WEST (NARROW)		
GIRDER #3 REC (NARROW)	15	25	A	26	15			GIRDER #3 REC (NARROW)		
	15	27	B	28	15	150		PATHWAY LTS EAST (NARROW)		
RTU PNL & MULTITRONIC	15	29	A	30	15			WEST ABUTMENT REC (WIDE)		
	15	31	B	32	15					
PNL B MAIN	15	33	A	34	15			DO NOT USE		
	15	35	B	36	15					
	15	37	A	38	15					
	15	39	B	40	15					
LIGHTING	0.30							ELECTRIC RAMP HEATING		
PARKING RECEPTACLES								LAUNDRY EQUIPMENT		
ELECTRIC HEATING								KITCHEN EQUIPMENT		
								TOTAL (kVA) 0.30		

PANEL	PANEL B (FPE STABLOK)						FED FROM:		PANEL A	
VOLTAGE:	120/208V/1Ø/3W		225A MAINS				MOUNTING:	RECESSED (FLUSH)		
POWER:							POWER:	NORMAL		
DESCRIPTION	LOAD	BRKR	CCT	PHASE	CCT	BRKR	LOAD	DESCRIPTION		
ABUTMENT & PNL LTS (WIDE)	15	1	A	2	15			NAVIGATION LTG (WIDE)		
	15	3	B	4	15					
GIRDER #2 LTS (WIDE)	15	5	A	6	15			GIRDER #1 LTS (WIDE)		
	15	7	B	8	15					
GIRDER #2 LTS (WIDE)	15	9	A	10	15			GIRDER #1 LTS (WIDE)		
	15	11	B	12	15					
GIRDER #2 LTS (WIDE)	15	13	A	14	15			GIRDER #1 LTS (WIDE)		
	15	15	B	16	15					
GIRDER #2 REC (NARROW)	15	17	A	18	15			GIRDER #1 REC (NARROW)		
	15	19	B	20	15					
GIRDER #2 REC (WIDE)	15	21	A	22	15			GIRDER #1 REC (NARROW)		
	15	23	B	24	15	150		PATHWAY LTS WEST (NARROW)		
GIRDER #1 REC (NARROW)	15	25	A	26	15			GIRDER #1 REC (NARROW)		
	15	27	B	28	15	150		PATHWAY LTS EAST (NARROW)		
RTU PNL & MULTITRONIC	15	29	A	30	15			WEST ABUTMENT REC (WIDE)		
	15	31	B	32	15					
DO NOT USE	15	33	A	34	15			DO NOT USE		
	15	35	B	36	15					
	15	37	A	38	15					
	15	39	B	40	15					
LIGHTING	0.30							ELECTRIC RAMP HEATING		
PARKING RECEPTACLES								LAUNDRY EQUIPMENT		
ELECTRIC HEATING								KITCHEN EQUIPMENT		
								TOTAL (kVA) 0.30		

ISSUED FOR TENDER



WSP
WSP Canada Group Limited
Suite 111-93 Lombard Ave
Winnipeg, MB R2B 3B1
1.204.943.3178
1.204.943.4948
www.wsp.com

DESIGNED BY: MJB	CHECKED BY: EG
DRAWN BY: MJB	APPROVED BY: MJB
HOR SCALE: AS NOTED	RELEASED FOR CONSTRUCTION
VERTICAL: 21 FEBRUARY 2018	DATE

ENGINEER'S SEAL
CONSULTANT ACQ. DIV. NO. E1.1

THE CITY OF WINNIPEG
PUBLIC WORKS DEPARTMENT
ENGINEERING DIVISION

CHIEF PEGUIS TRAIL - GREENWAY EXTENSION

PROPOSED PATHWAY ALIGNMENT
KILDONAN SETTLERS BRIDGE
LIGHTING LAYOUT

CITY DRAWING NUMBER
SHEET 2 OF 3
BID NO. 4-2018

NOTE: These design documents are prepared solely for the use by the party with whom the design professional has entered into a contract and there are no representations of any kind made by the design professional to any party with whom the design professional has not entered into a contract.