

GENERAL NOTES

- ALL UTILITIES ARE SHOWN AS INFORMATION ONLY. CONTRACTOR TO CONFIRM LOCATION OF ALL UTILITIES ON SITE PRIOR TO CONSTRUCTION.
- CONTRACTOR SHALL PROVIDE QUALIFIED CREW TO LAY OUT LANDSCAPING ELEMENTS. THE CREW SHALL BE EQUIPPED WITH ALL THE NECESSARY EQUIPMENT TO PROVIDE HORIZONTAL AND VERTICAL LAYOUT IN ACCORDANCE WITH THE DRAWINGS AND SPECIFICATIONS.
- CONTRACTOR TO STAKE OUT LOCATION OF ALL WORKS FOR REVIEW BY CONTRACT ADMINISTRATOR PRIOR TO ANY REMOVALS OR CONSTRUCTION.
- DURING CONSTRUCTION CONTRACTOR TO PROTECT TO CITY OF WINNIPEG STANDARDS ALL EXISTING BUILDINGS & FEATURES, ABOVE & BELOW GROUND UTILITIES, PAVING, CURBS, SIDEWALKS, FENCING, BOLLARDS, HYDRANTS, CATCH BASINS, WATER VALVES AND PLANTING MATERIAL TO REMAIN. AREAS DAMAGED DURING CONSTRUCTION TO BE REPAIRED IN ACCORDANCE WITH CITY OF WINNIPEG STANDARD CONSTRUCTION SPECIFICATIONS AT NO COST TO THE CITY.
- RESTORE DAMAGED AND DISTURBED SURFACES WITHIN AND ADJACENT TO SITE PER CW1130.
- ALL WORK TO BE DONE IN ACCORDANCE WITH CITY OF WINNIPEG STANDARD CONSTRUCTION SPECIFICATIONS UNLESS OTHERWISE INDICATED.

PROTECTION AND PRUNING OF EXISTING TREES:

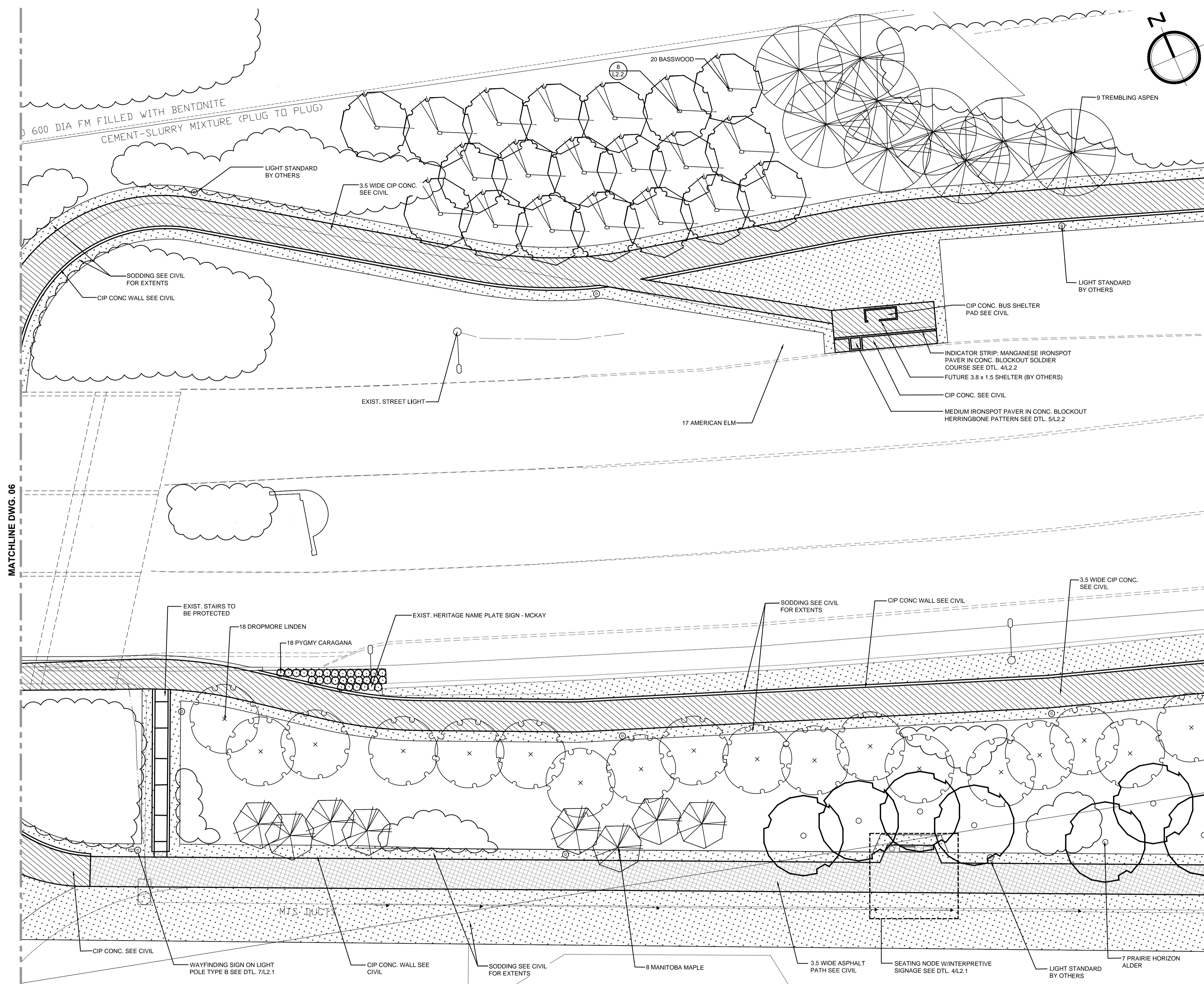
- CONTRACTOR TO MARK OUT WORKING LIMITS FOR APPROVAL INCLUDING VERTICAL WORKING ROOM.
- NO TREES MAY BE REMOVED OR PRUNED WITHOUT APPROVAL FROM THE CONTRACT ADMINISTRATOR.
- ERECT 1.22m HT. SNOW FENCE TREE PROTECTION BARRIER BETWEEN TREE STANDS AND INDIVIDUAL TREES ADJACENT TO NEW CONSTRUCTION. FIELD VERIFY LOCATION OF FENCE WITH CONTRACT ADMINISTRATOR PRIOR TO COMMENCEMENT OF CONSTRUCTION ACTIVITIES.
- STRAP ALL INDIVIDUAL TREES TO CW1140.
- ROOT CUTTING, WITH APPROVAL.
- PRUNING BY PROFESSIONAL ARBORIST, AS SPECIFIED.

PLANT SPECIFICATION LIST

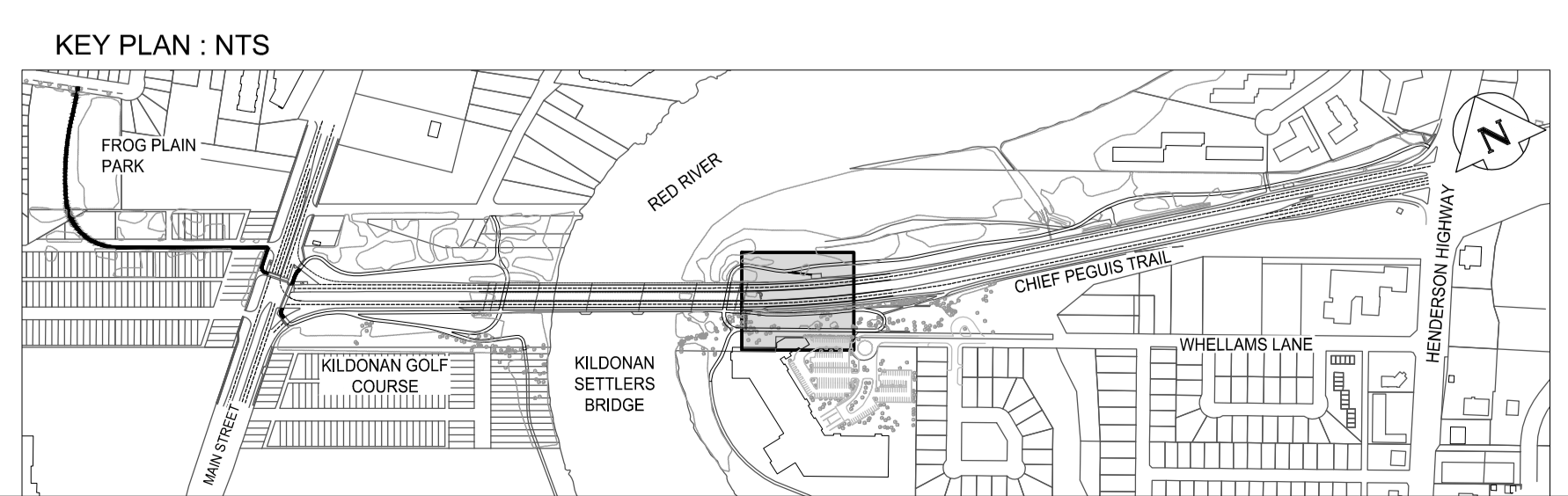
QTY	BOTANICAL / COMMON NAME	SIZE / REMARKS
Deciduous Trees		
8	<i>Acer negundo</i> / Manitoba Maple	Single-stem 65mm cal. 12 major branches in well formed head 1.5m above grade B & B, wire basket. Double stake.
20	<i>Tilia americana</i> / Basswood	Single-stem 65mm cal. 12 major branches in well formed head 1.5m above grade B & B, wire basket. Double stake.
18	<i>T. x flavescens</i> 'Dropmore' / Dropmore Linden	Single-stem 65mm cal. 12 major branches in well formed head 1.5m above grade B & B, wire basket. Double stake.
9	<i>Populus Tremuloides</i> / Trembling Aspen	Single-stem 65mm cal. 12 major branches in well formed head 1.5m above grade B & B, wire basket. Double stake.
7	<i>Alnus A. hirsula</i> 'Harlan' / Prairie Horizon Alder	Single-stem 65mm cal. 12 major branches in well formed head 1.5m above grade B & B, wire basket. Double stake.
Deciduous Shrubs		
29	<i>Caragana pygmaea</i> / Pygmy Caragana	400-500mm dia. well formed shrub with even growth. Container stock (2 gal pot min.)

MATERIALS LEGEND:

- EXISTING STREET LIGHT
- LIGHT STANDARD BY OTHERS
- PROTECT EXISTING TREES & SHRUBS
- CIP CONC. SEE CIVIL
- INDICATOR STRIP: MANGANESE IRONSPOT PAVER SOLDIER COURSE IN CONC. BLOCKOUT SEE DTL. 4/L2.2
- MEDIUM IRONSPOT PAVER HERRINGBONE PATTERN IN CONC. BLOCKOUT SEE DTL. 5 /L2.2
- SODDING



1 MATERIALS & PLANTING PLAN
07 SCALE 1 : 250



LOCATIONS APPROVED UNDERGROUND STRUCTURES

SIGNED BY:	7			
SUPV U/G STRUCTURES	6			
DATE	5			
	4			
	3			
	2	ISSUED FOR TENDER	21-FEB-18	JH
	1	ISSUED FOR REVIEW	09-FEB-18	JH
	0	ISSUED FOR 90% REVIEW	09-JAN-17	JH
NO. REVISIONS		DATE		BY

HTFC
PLANNING & DESIGN
200-225 St. James Avenue East Winnipeg, MB R2B 0P3
PH: (204) 544-1207

DESIGNED BY	JH	CHECKED BY	GM
DRAWN BY	JH	APPROVED BY	GM
WORK SCALE		RELEASED FOR CONSTRUCTION	
VERTICAL		DATE	21 FEB 2018

ENGINEER'S SEAL
[Signature]
Member No. 81
Feb 21, 2018
CONSULTANT ACAD DWG. NO.
L1.7

THE CITY OF WINNIPEG
PUBLIC WORKS DEPARTMENT
ENGINEERING DIVISION

CHIEF PEGUIS TRAIL - GREENWAY EXTENSION
FROG PLAIN WAY TO HENDERSON HIGHWAY

MATERIALS & PLANTING PLAN

CITY DRAWING NUMBER
SHEET **07** OF **13**
BID NO.
04-2018

Feb 26, 2018 - 10:20am
 \\ps01\htfc_files_server\2017\17-094_Chief_Peguis_Trail_Greenway_Extension_ACAD\17-094_Layout.dwg - tab:11.7