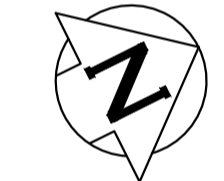


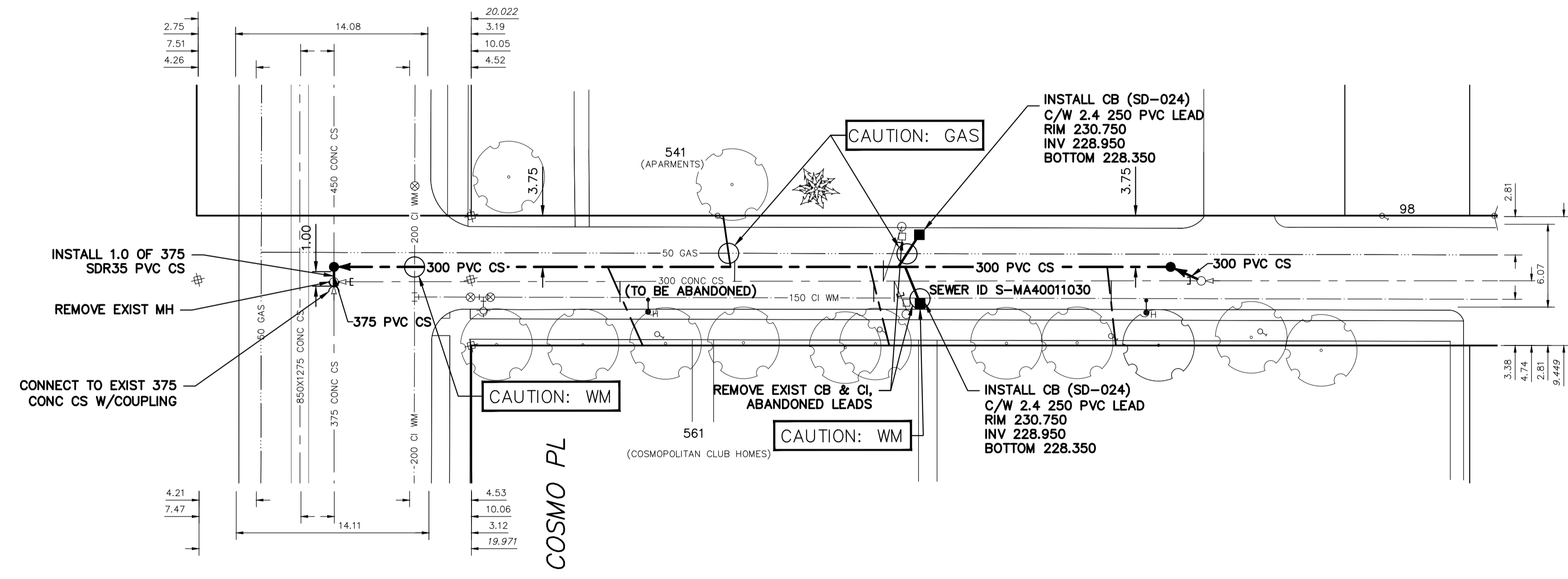
NOTE: CHAINAGES SHOWN ARE ALONG
 CL OF BERLIN STREET

BERLIN STREET



SEWER SERVICE INFORMATION

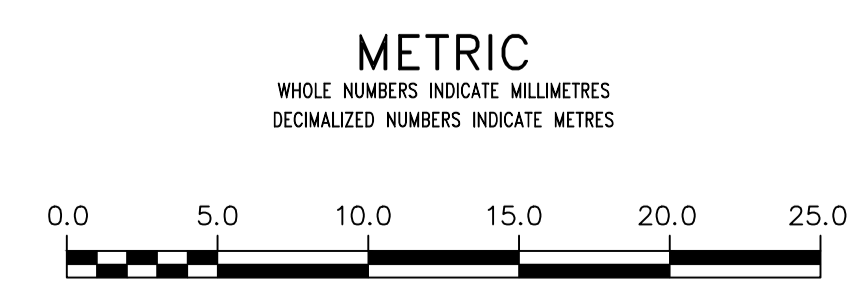
ADDRESS	SIZE (mm)	R DIST	JUNCTION TIE	REMARKS
541 COSMO PL	-	8.79 W OF EL	-	RENEW TO R W/150 PVC
RESIDENTIAL	-	33.98 W OF 1ST MH W RIGHT	-	-
561 COSMO PL	150	10.2 N OF NL	-	RENEW TO R W/150 PVC
RESIDENTIAL	-	19.62 N OF MH AT COSMO PL	-	-
561 COSMO PL	150	-	-	RENEW TO R W/150 PVC
RESIDENTIAL	-	-	-	-
561 COSMO PL	150	-	-	RENEW TO R W/150 PVC
RESIDENTIAL	-	-	-	-



SEWER JUNCTION INFORMATION FROM SEWER VIDEO INSPECTION
 SEWER ID S-MA40011030

DISTANCE FROM MH ID S-MH70063339	DIAMETER	CLOCK
6.6	150	11
22.5	250	10
23.3	250	1
24.0	150	10
34.2	150	2
42.6	150	10

FOR INDEX SEE
 11678



WARNING
 IF POWER EQUIPMENT OR EXPLOSIVES ARE TO BE USED FOR EXCAVATION ON THIS PROJECT THE CONTRACTOR MUST:
 1) NOTIFY THE GAS COMPANY OF THE PROPOSED LOCATION OF EXCAVATION.
 2) TAKE PRECAUTION TO AVOID DAMAGE TO GAS COMPANY INSTALLATIONS.
 SEE PROVINCIAL REGULATION 210/72 FOR DETAILS

LOCATION APPROVED
 UNDERGROUND STRUCTURES

SUPV. U/G STRUCTURES COMMITTEE DATE

NOTE:
 LOCATION OF UNDERGROUND STRUCTURES AS SHOWN ARE BASED ON THE BEST INFORMATION AVAILABLE BUT NO GUARANTEE IS GIVEN THAT ALL EXISTING UTILITIES ARE SHOWN OR THAT THE GIVEN LOCATIONS ARE EXACT. CONFIRMATION OF EXISTENCE AND EXACT LOCATION OF ALL UTILITIES MUST BE OBTAINED FROM THE INDIVIDUAL UTILITIES BEFORE PROCEEDING WITH CONSTRUCTION.

B.M. ELEV.

NO.	REVISIONS	DATE	BY

DESIGNED BY	TP	CHECKED BY	SC
DRAWN BY	RS	APPROVED BY	KZ
SCALE:	RELEASED FOR CONSTRUCTION		
HORIZONTAL 1:250	KAS ZUREK		
VERTICAL 1:50	DATE 2018-02-27		
DATE 2018 02 27	DATE 2018-02-27		

PLOT DATE: 2018 02 27

ENGINEER'S SEAL

ORIGINAL SIGNED BY
 S.R.J. COURNOYER
 18/02/21

CONSULTANT DRAWING NUMBER

THE CITY OF WINNIPEG
 WATER AND WASTE DEPARTMENT
 ENGINEERING DIVISION

2017 SEWER MAIN RENEWALS
 CONTRACT 6

BERLIN STREET
 1ST MH N OF COSMO PLACE TO
 MH AT COSMO PLACE

SHEET 3 OF 7
 CITY DRAWING NUMBER
 11679