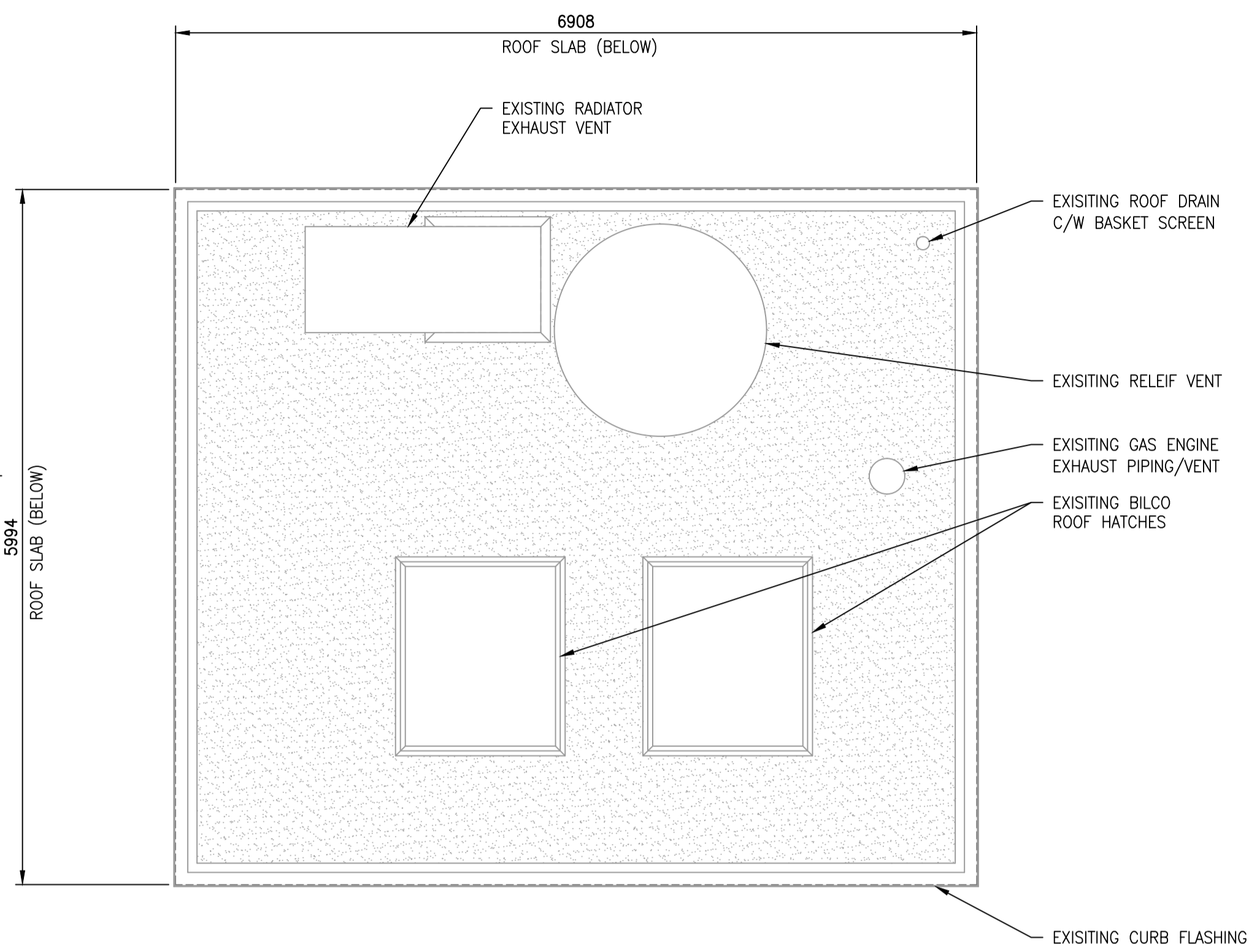
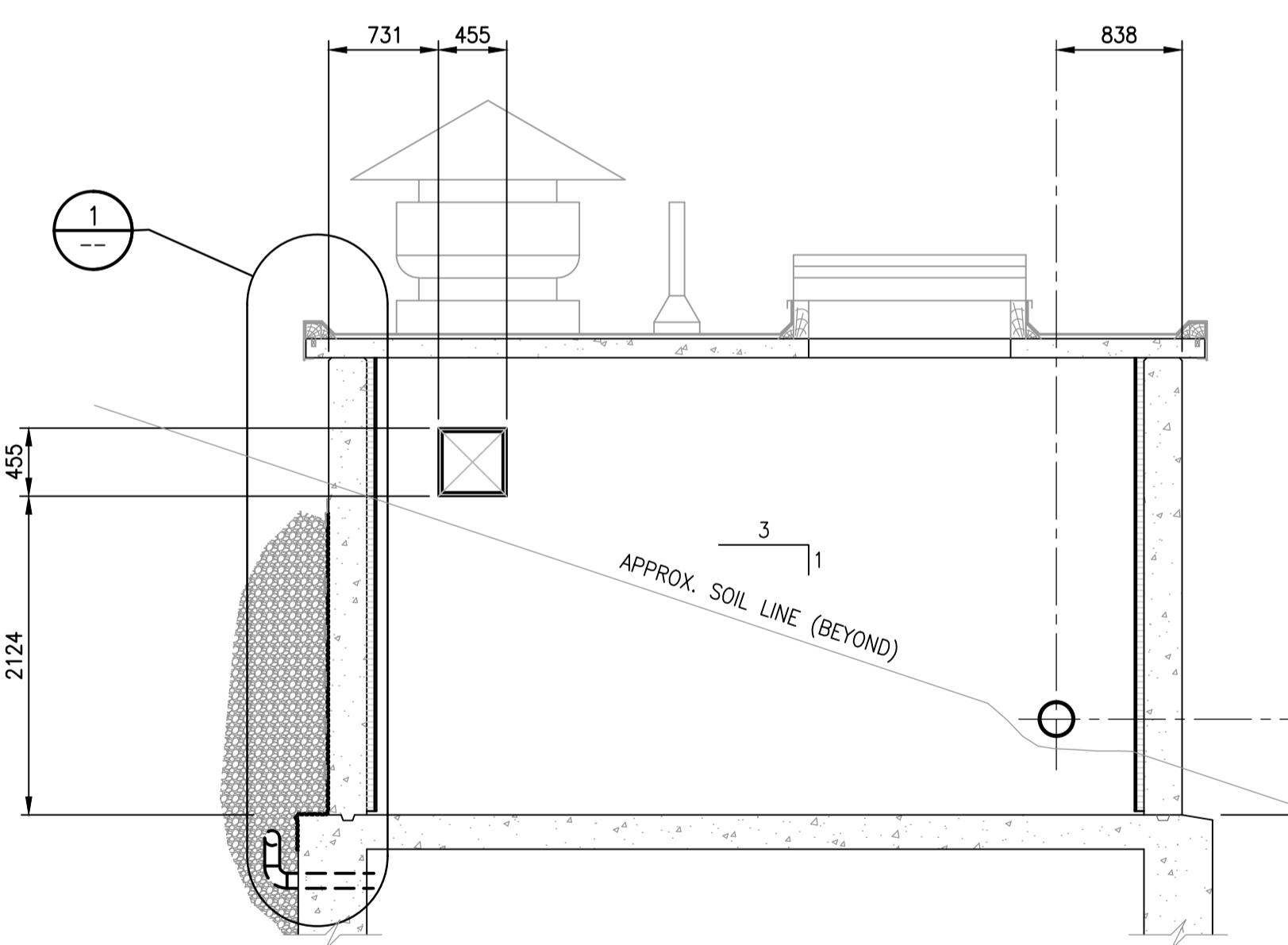


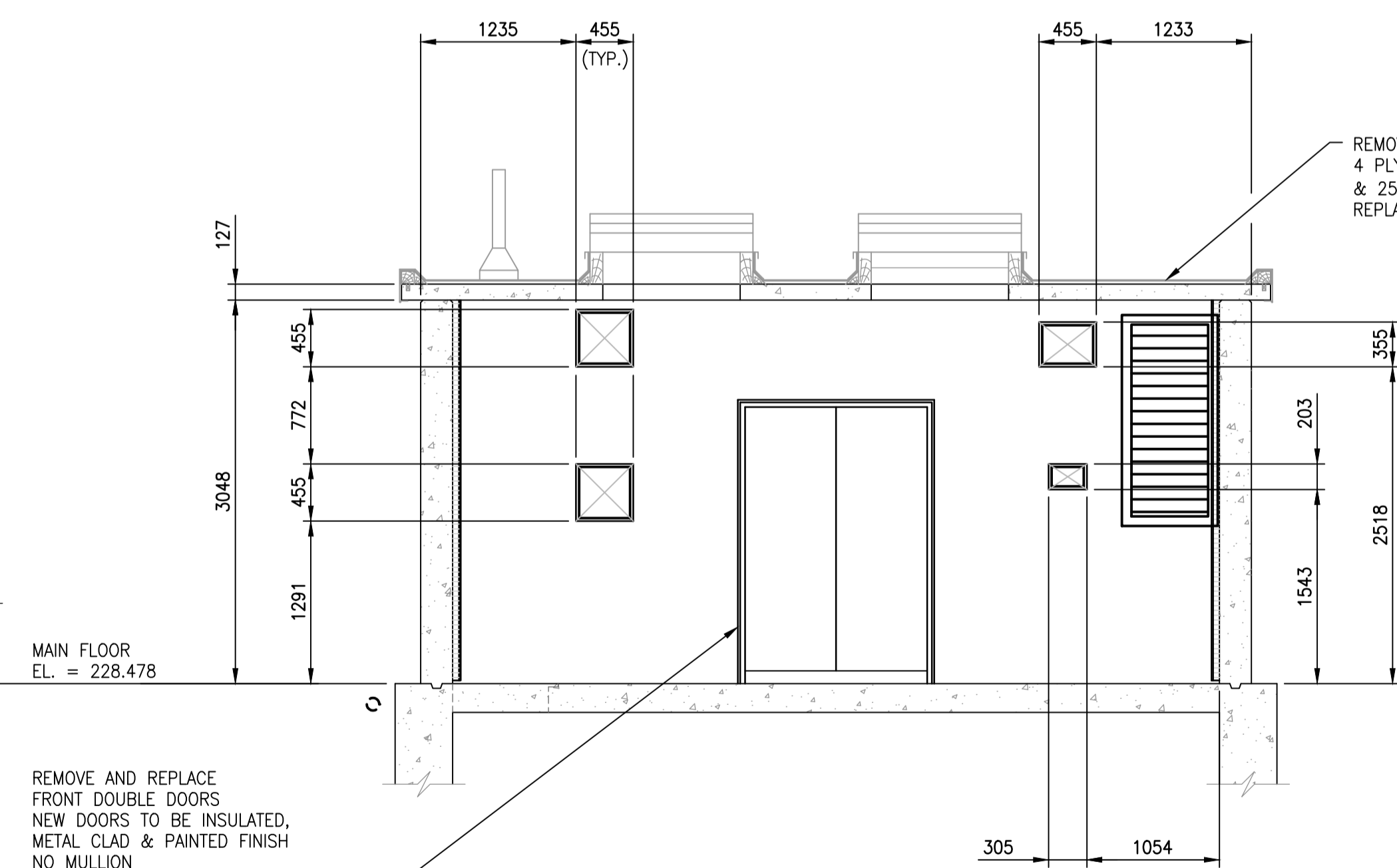
MAIN FLOOR PLAN @ T.O.C. EL. 228.478
1 : 40



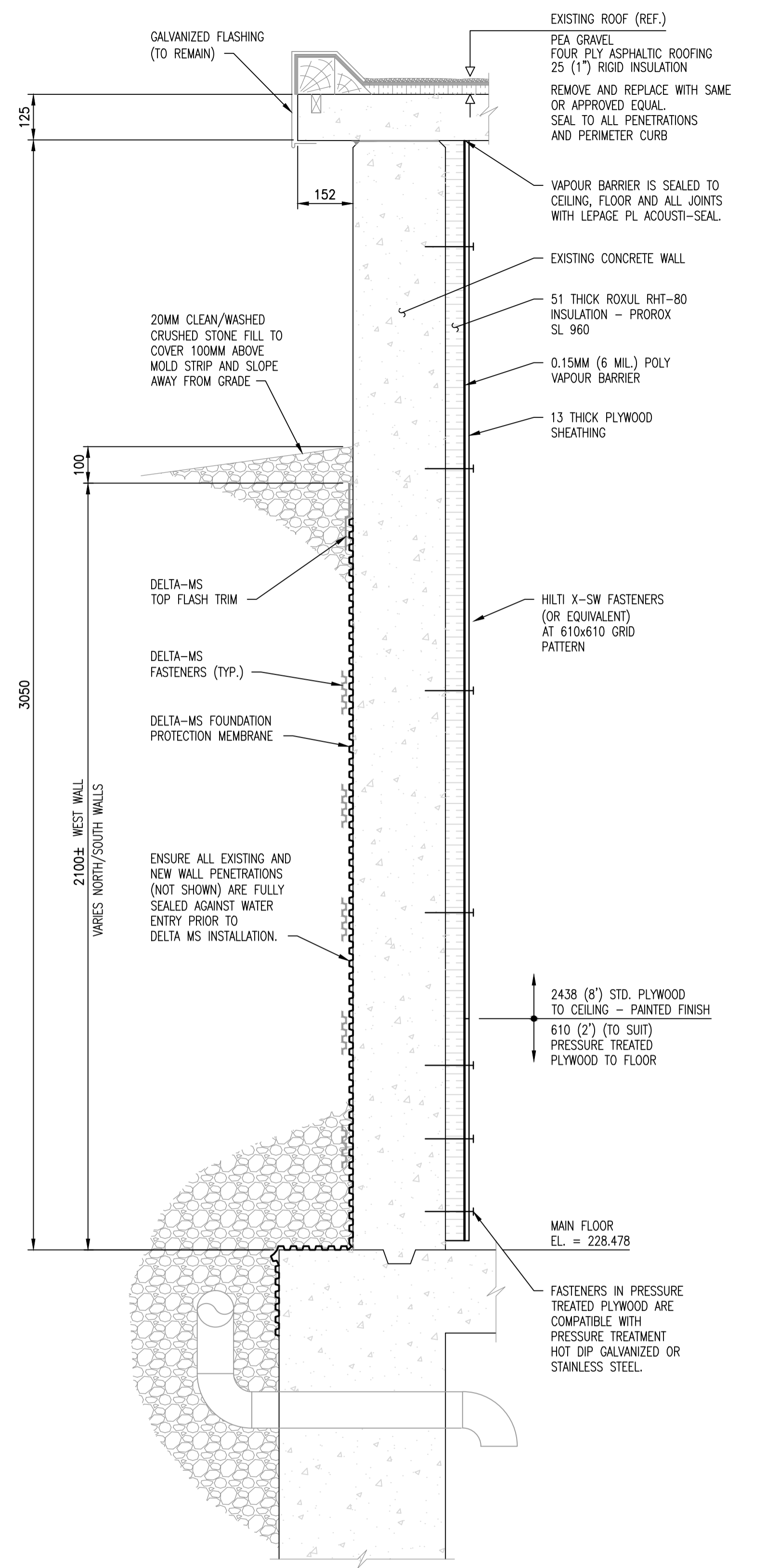
ROOF PLAN
1 : 40



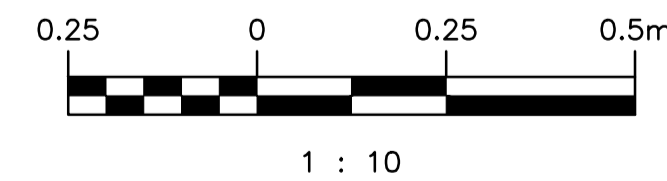
ELEVATION A
1 : 40



ELEVATION B
1 : 40

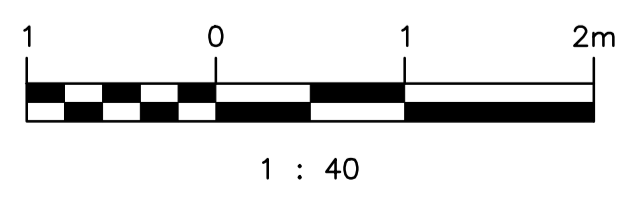


WALL DETAIL
1 : 10



LEGEND:
— EXISTING
- - - EXISTING TO BE REMOVED

785-G220	RELOCATION OF ROUTE 20 - PUMPING STATION MECHANICAL LAYOUT
785-G218	RELOCATION OF ROUTE 20 - WET WELL LAYOUT - REINFORCED CONCRETE
785-G217	RELOCATION OF ROUTE 20 - CONTROL ROOM LAYOUT P-957
DRAWING NUMBER	REFERENCE DRAWINGS



00	ISSUED FOR TENDER, BID OPP. 475-2018	2018-05-09	KK	BJC
NO.	REVISIONS	DATE	DESIGN	CHECK

SNC-LAVALIN INC.
148 Nature Park Way
Winnipeg, MB, Canada R3P 0X7
204-786-8080

DESIGNED BY: K. KOTYK
DRAWN BY: B. DICKSON
SCALE: AS SHOWN
DATE: 2017-08-03
CONSULTANT NO.:

CHECKED BY: D. SIDHU
APPROVED BY: B. CLEVEN
ISSUED FOR CONSTRUCTION
DATE:

ENGINEER'S SEAL
PRELIMINARY
NOT TO BE USED FOR CONSTRUCTION

THE CITY OF WINNIPEG
WATER AND WASTE DEPARTMENT

METRO ROUTE 20 UNDERPASS PUMPING STATION
2018 UPGRADES
PLANS, SECTIONS AND DETAILS
BUILDING REMOVALS AND REPAIRS

CITY DRAWING NUMBER: 1-0309U-B0001
SHEET: 001
REV: 00
SIZE: A1