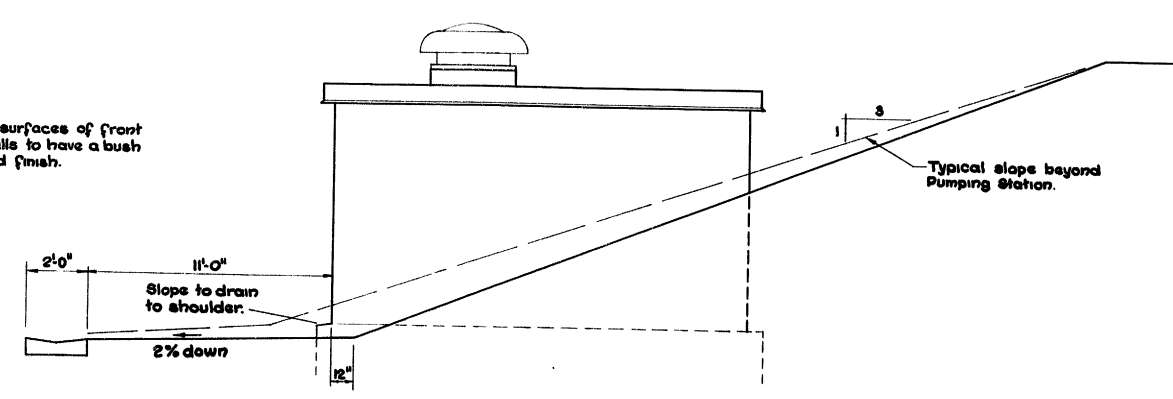


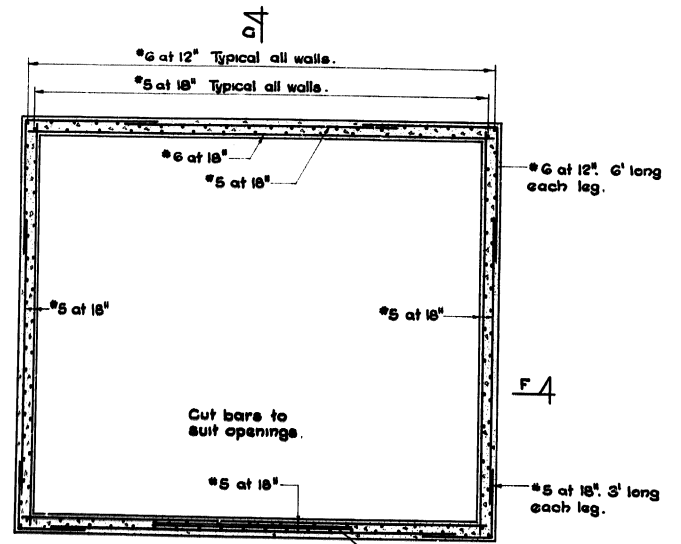
Front Elevation.

Exposed surfaces of front of side walls to have a bush hammered finish.

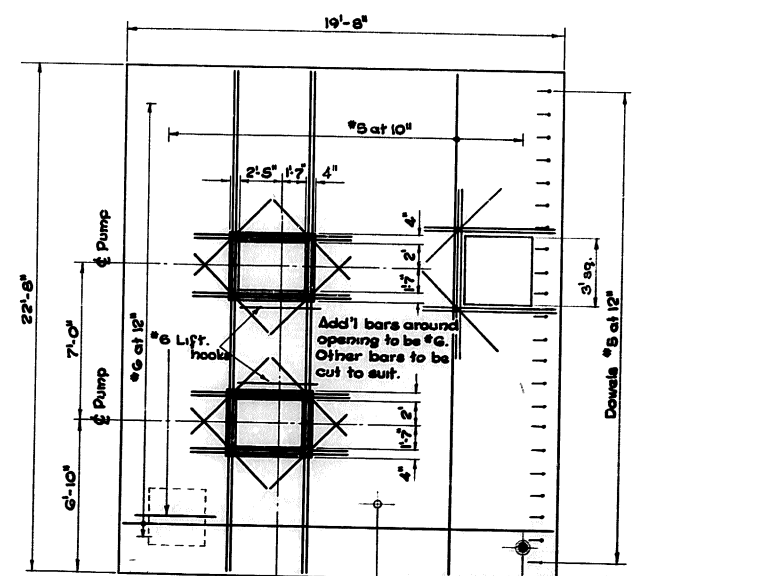


Side Elevation

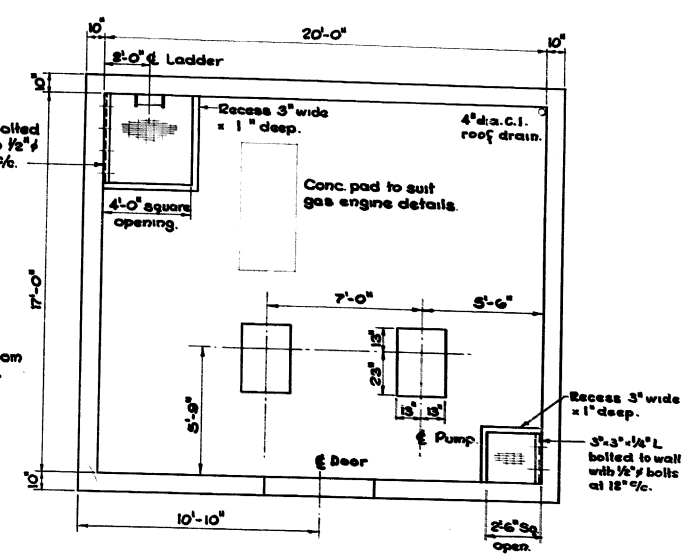
See also Control Room Floor Dwg. 11* C-218.



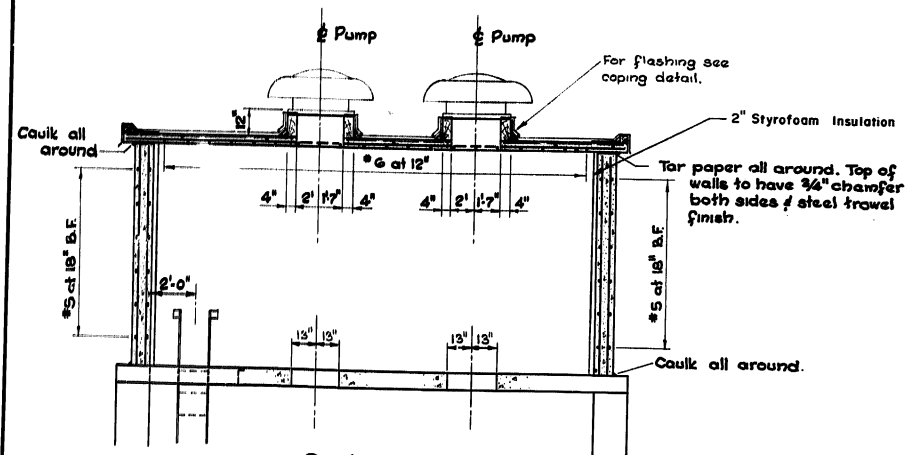
Section E-E



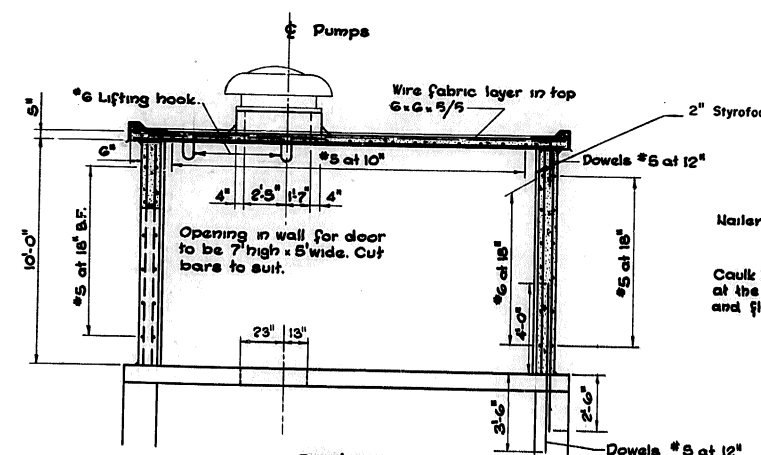
Roof Plan



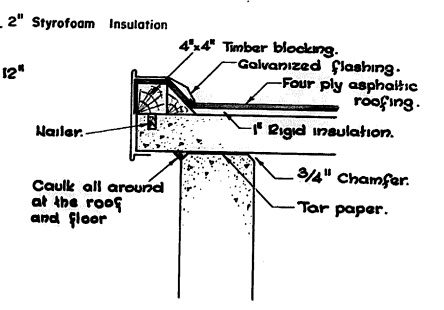
Control Room Floor



Section F-F



Section G-G



Coping Detail.

NOTES:
 • Concrete - 3000 p.s.i. at 28 days. Cement to be Type V Sulphate resistant.
 • Reinforcing Steel - Deformed bars, int. or hard grade, C.S.A. G30-1, G30-2 and G30-6.
 • Cover to Reinforcement: 3" against ground in footings, 2" " " walls, 3/4" elsewhere



• This drawing to be read in conjunction with Wet Well and Mechanical drawings.
 • Gratings to be by Borden-Type 'B' banded and galvanized. Design load 100 lb/sq.ft.
 • All angles to be galvanized and bolts to be stainless steel.

AS BUILT 1968

DAMAS AND SMITH LIMITED
 CONSULTING ENGINEERS
 TORONTO · LONDON · WINNIPEG

ASBUILT NOVEMBER 1968
 THE METROPOLITAN CORPORATION OF GREATER WINNIPEG
 STREETS AND TRANSIT DIVISION

RELOCATION OF ROUTE 20
 PUMPING STATION
 CONTROL ROOM LAYOUT P-957

REV.	BY	DATE	DESCRIPTION
2	H.G.	Nov. 67	ADDITIONAL INFORMATION ADDED.
1	R.B.	Oct. 67	3' sq. OPENING IN ROOF ADDED.

DATE	SEPT. 1967	CHECK R.R.	APPROVED	DRAWING No.
			<i>W. J. ...</i> Engineer of Streets and Traffic	785-G217

