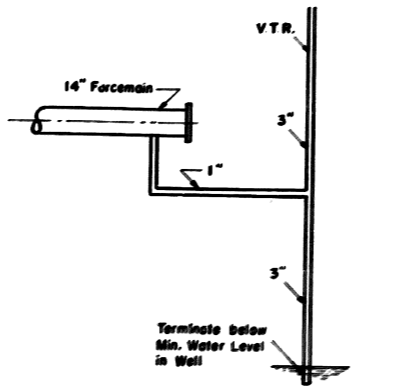
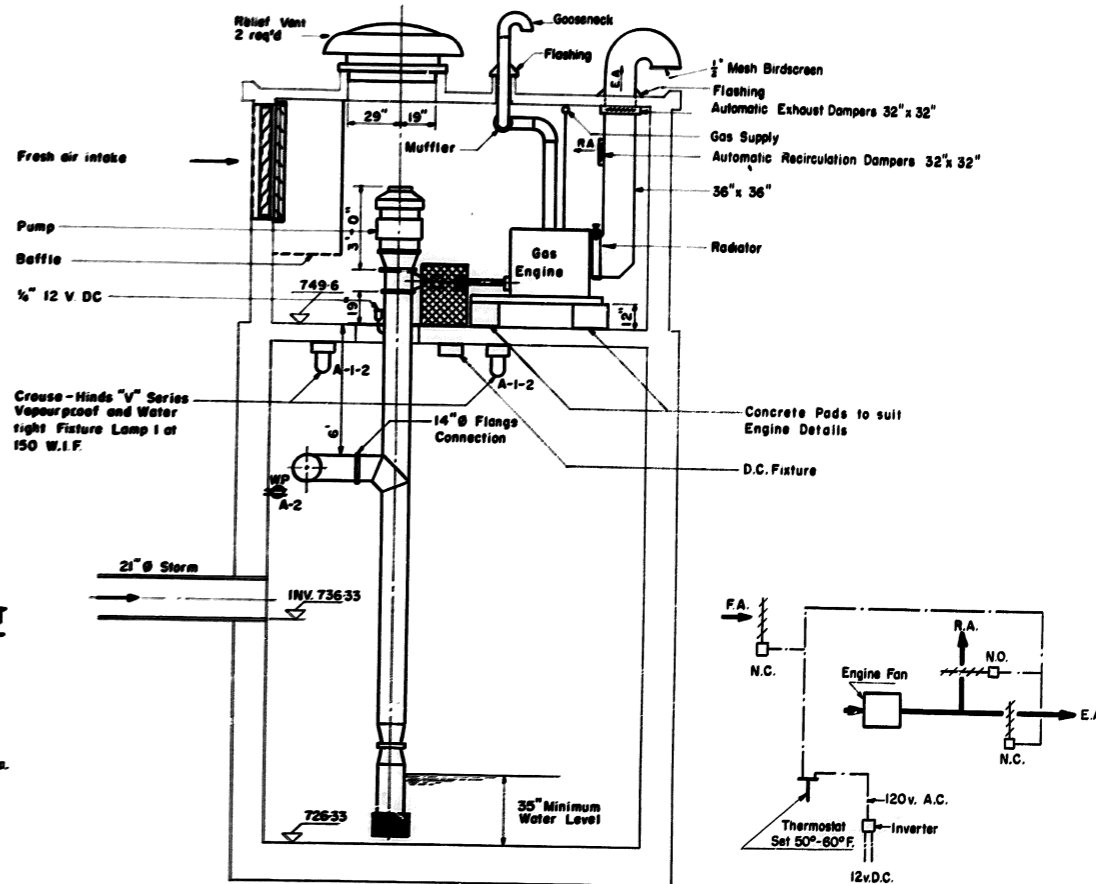


PLAN MECHANICAL

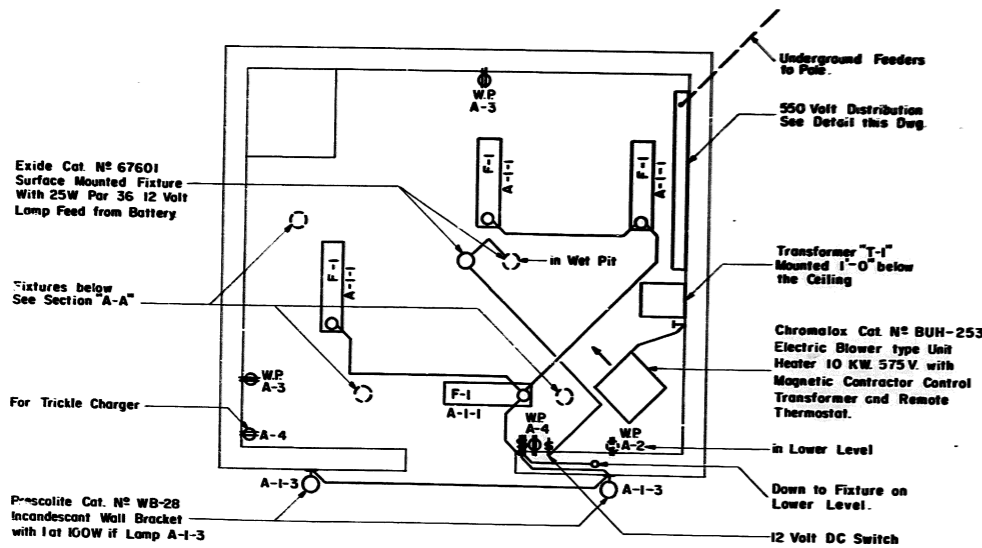


DRAINAGE ARRANGEMENT FOR FORCEMAIN

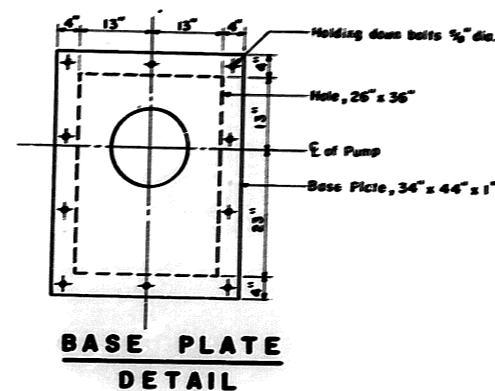


SECTION 'A-A'

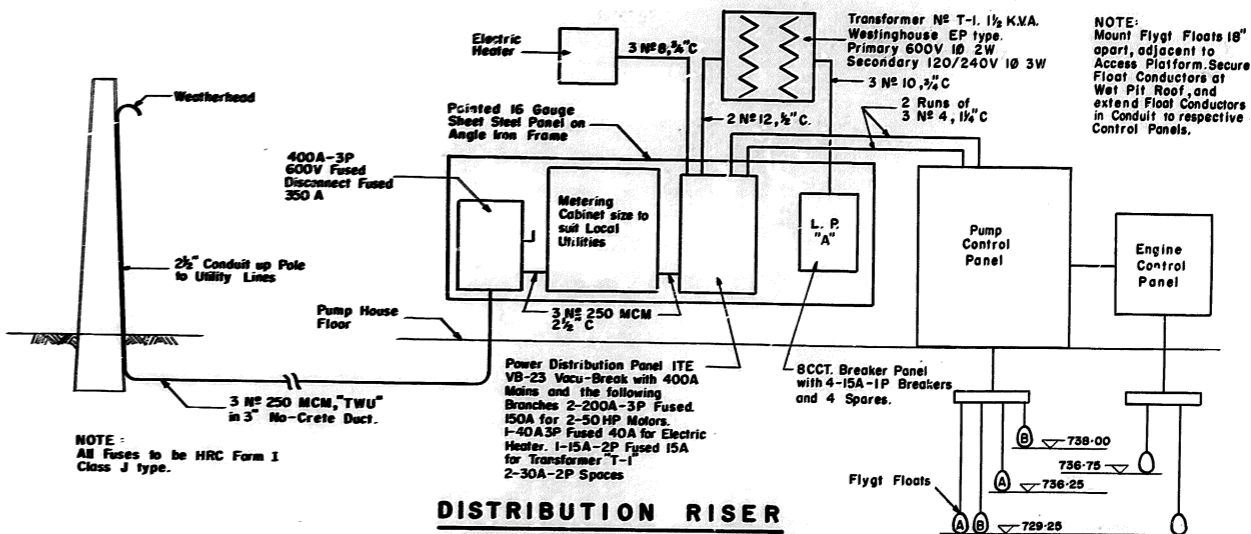
VENTILATION CONTROL DIAGRAM (N.T.S.)



PLAN ELECTRICAL



BASE PLATE DETAIL



DISTRIBUTION RISER

- NOTES:**
1. Provide Fresh Air Intake Louvres 2'-0" x 5'-0" with Battery operated Dampers behind in two sections, each with Motor.
 2. Provide 1/2" Cold Water Service to Building
 3. Provide over each Pump one Jenn-Air No. RV-361 Relief Opening having Battery operated Dampers
 4. "F-1" Fixture shall be Wilson Cat. No. 4846 Industrial 4' 2" Lamp with RLM type Reflector and 2 at 40W CWRS Lamps. Fixtures shall be suspended on 1'-0" Stem Hangers.
 5. Electrical Contractor to connect 3-12V Dampers and Controlling Thermostats with 2 No. 6, 1" Conduit for Batteries.
 6. Electrical Contractor to Provide Grounding as Required by Local Utilities.
 7. All Conduit below Pump level shall have Water-tight Seals.

AS BUILT 1968



DAMAS AND SMITH LIMITED
CONSULTING ENGINEERS
TORONTO - LONDON - WINNIPEG

THE METROPOLITAN CORPORATION OF GREATER WINNIPEG
STREETS AND TRANSIT DIVISION

RELOCATION OF ROUTE 20 P-960

PUMPING STATION
MECHANICAL LAYOUT

REV.	BY	DATE	DESCRIPTION	DRAWN	CHECK	DATE	APPROVED	DATE	NO.
2	H.D.	10/27	ADDITIONAL INFORMATION ADDED.						
1	R.B.	09/27	FORCEMAIN ADAPTOR ADDED.						

DATE SEPTEMBER, 19 1967
Approved: [Signature]
Engineer of Streets and Traffic
DRAWING No. 785-G220

