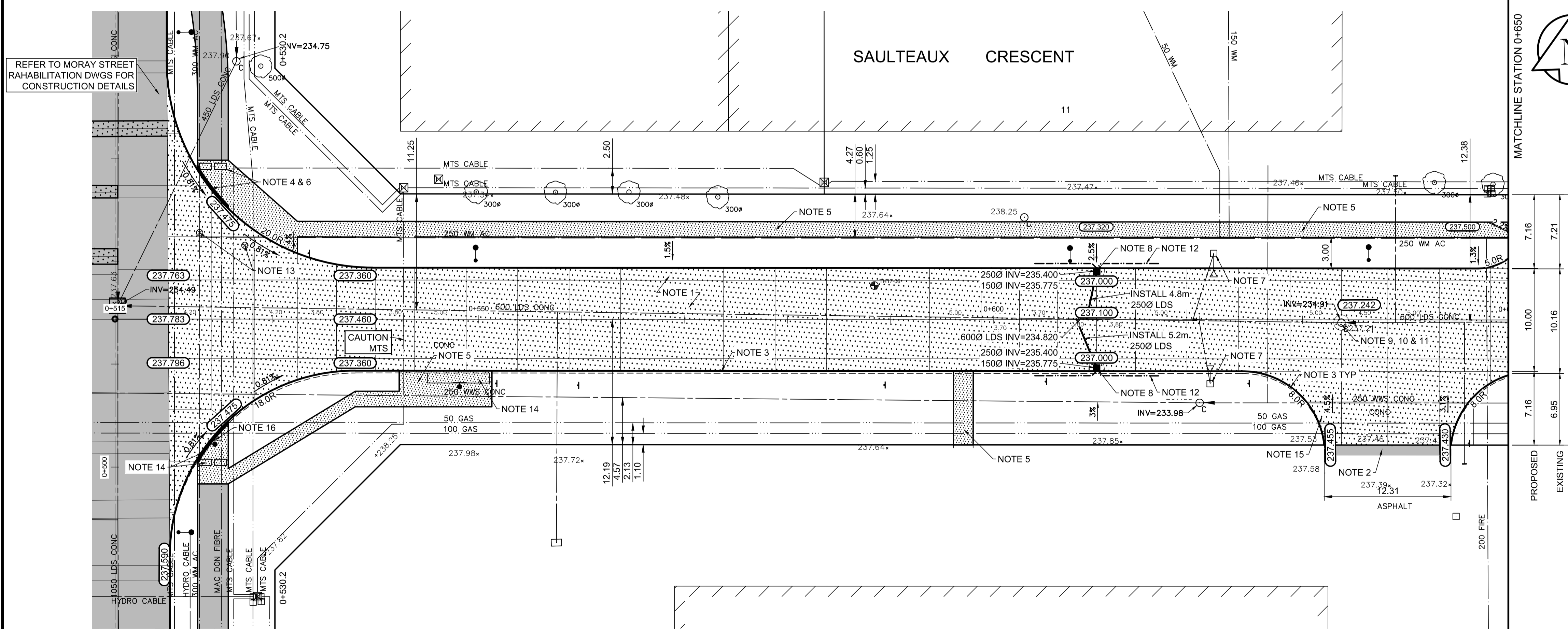
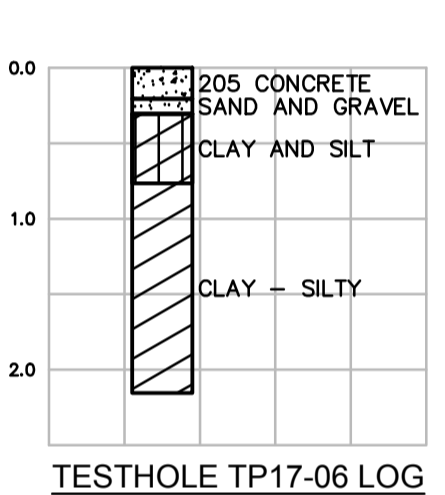


TYPICAL CROSS SECTION

230 CONCRETE PAVEMENT
PLAIN-DOWELLED JOINTS
75 BASE COURSE MATERIAL
150 CRUSHED SUB BASE MATERIAL
(MAX. SIZE 50mm)
450 CRUSHED SUB BASE MATERIAL
(MAX. SIZE 150mm)
SEPERATION GEOTEXTILE FABRIC
GEOGRID
PREPARED SUBGRADE



- REFERENCE NOTES**
- PAVEMENT DIMENSIONS ARE TO BACK OF CURB
 - BASELINE IS CENTRE LINE RIGHT-OF-WAY
 - PROPERTY LINES OBTAINED FROM CITY OF WINNIPEG L.B.I.S., AND NO SCALE FACTOR WAS APPLIED
 - REFER TO AECOM FIELD BOOK NO. 4994

- CONSTRUCTION NOTES**
- REMOVE EXISTING CONCRETE PAVEMENT AND CONSTRUCT NEW 230mm CONCRETE PAVEMENT c/w PLAIN-DOWELLED JOINTS
 - REMOVE EXISTING ASPHALT PAVEMENT AND CONSTRUCT NEW ASPHALTIC PAVEMENT TYPE 1A (75mm INTEGRAL)
 - CONSTRUCT NEW MODIFIED BARRIER CURB (180mm HT. INTEGRAL)
 - CONSTRUCT NEW CURB RAMP (10mm HT. INTEGRAL)
 - CONSTRUCT NEW 100mm CONCRETE SIDEWALK
 - INSTALL NEW DETECTABLE WARNING SURFACE TILE EXISTING LEAD
 - REMOVE EXISTING CATCHBASIN AND CATCHPIT AND PLUG EXISTING LEAD
 - INSTALL NEW MODIFIED BARRIER CURB AND GUTTER INLET FRAME AND COVER c/w CATCH BASIN (SD-024) AND CONNECT NEW 250mm LEAD TO EXISTING 600mm LAND DRAINAGE SEWER
 - REMOVE EXISTING FRAME AND COVER AND PLACE NEW FRAME AND SOLID COVER (AP-004/AP-005)
 - ADJUST EXISTING MANHOLE TO GRADE
 - INSTALL NEW CAST IRON RING
 - INSTALL 150mm SUBDRAIN 6.0m ON EACH SIDE OF CATCHBASIN
 - ADJUST EXISTING WATER VALVE TO GRADE
 - REMOVE EXISTING CONCRETE SIDEWALK
 - REMOVE EXISTING CONCRETE PAVEMENT AND CONSTRUCT NEW 200mm REINFORCED CONCRETE PAVEMENT
 - REMOVE AND RE-LOCATE EXISTING IRRIGATION SPRINKLER HEAD

AECOM
Certificate of Authorization
AECOM Canada Ltd.
No. 4671 Date: _____

METRIC
WHOLE NUMBERS INDICATE MILLIMETRES
DECIMALIZED NUMBERS INDICATE METRES

150 mm W.M.	130 mm W.M.	300mm L.D.S.	250mm W.W.S.	HYDRO	PROPERTY LINE	Q PROFILE	EXISTING	PROPOSED
WATERMAIN	HYDRANT	LAND DRAINAGE SEWER	WASTEWATER SEWER	M.T.S.	SURVEY BAR	LEFT GUTTER	---	---
VALVE	MANHOLE	CATCH BASIN	CATCH PIT	CONCRETE	ELEVATION (235.750)	RIGHT GUTTER	---	---
ASPHALT	JUNCTIONS	CULVERT	GAS	ASPHALT	TREE	LEFT PROPERTY LINE	---	---
PROPERTY LINE	CULVERT	GAS		CONCRETE SIDEWALK	SIDEWALK RAMP	RIGHT PROPERTY LINE	---	---
CONCRETE SIDEWALK				FENCE	CONCRETE SIDEWALK		---	---
LEGEND - PLAN	PROPOSED	EXISTING	LEGEND - PLAN	PROPOSED	EXISTING	LEGEND - PROFILE	PROPOSED	

LOCATION APPROVED UNDERGROUND STRUCTURES

SUPV. U/G STRUCTURES COMMITTEE DATE

NOTE:
LOCATION OF UNDERGROUND STRUCTURES AS SHOWN ARE BASED ON THE BEST INFORMATION AVAILABLE. BUT NO GUARANTEE IS GIVEN THAT ALL EXISTING UTILITIES ARE SHOWN OR THAT THE GIVEN LOCATIONS ARE EXACT. CONFIRMATION OF EXISTENCE AND EXACT LOCATION OF ALL SERVICES MUST BE OBTAINED FROM THE INDIVIDUAL UTILITIES BEFORE PROCEEDING WITH CONSTRUCTION.

B.M. 39-034
ELEV. 238.277

S.E. Cor. Moray St. & Saulteaux Cres. Tbt. in N. Conc. Foundation No. 737 Moray St. 2 m E. & 0.1 m below Conc. blocks of N.W. Cor. of Bldg.

AECOM

DESIGNED BY: SS
DRAWN BY: SS/RAM
HOR. SCALE: 1:250
VERTICAL: 1:10

CHECKED BY: BC/KWR
APPROVED BY:
RELEASED FOR CONSTRUCTION BY:

0 ISSUED FOR TENDER 03/05/2018 BC
A ISSUED FOR REVIEW 02/02/2018 BC

NO. REVISIONS DATE BY DATE

ENGINEER'S SEAL
K.W. RAE
REGISTERED PROFESSIONAL ENGINEER

THE CITY OF WINNIPEG
PUBLIC WORKS DEPARTMENT
ENGINEERING DIVISION

2018/2019 INDUSTRIAL STREET RENEWAL PROGRAM

SAULTEAUX CRESCENT EAST LEG - MORAY ST TO MORAY ST
CONCRETE PAVEMENT RECONSTRUCTION
MORAY STREET TO STATION 0+650

CITY DRAWING NUMBER
SHEET 03 OF 47

CONSULTANT DRAWING NO. CT-03