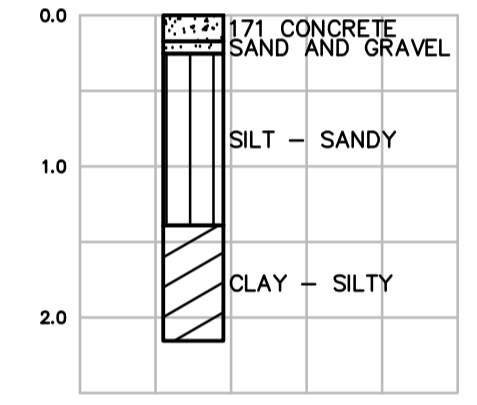


230 CONCRETE PAVEMENT
PLAIN-DOWELLED JOINTS
75 BASE COURSE MATERIAL
150 CRUSHED SUB BASE MATERIAL
(MAX. SIZE 50mm)
450 CRUSHED SUB BASE MATERIAL
(MAX. SIZE 150mm)
SEPARATION GEOTEXTILE FABRIC
GEOGRID
PREPARED SUBGRADE

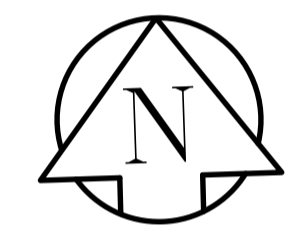
TYPICAL CROSS SECTION



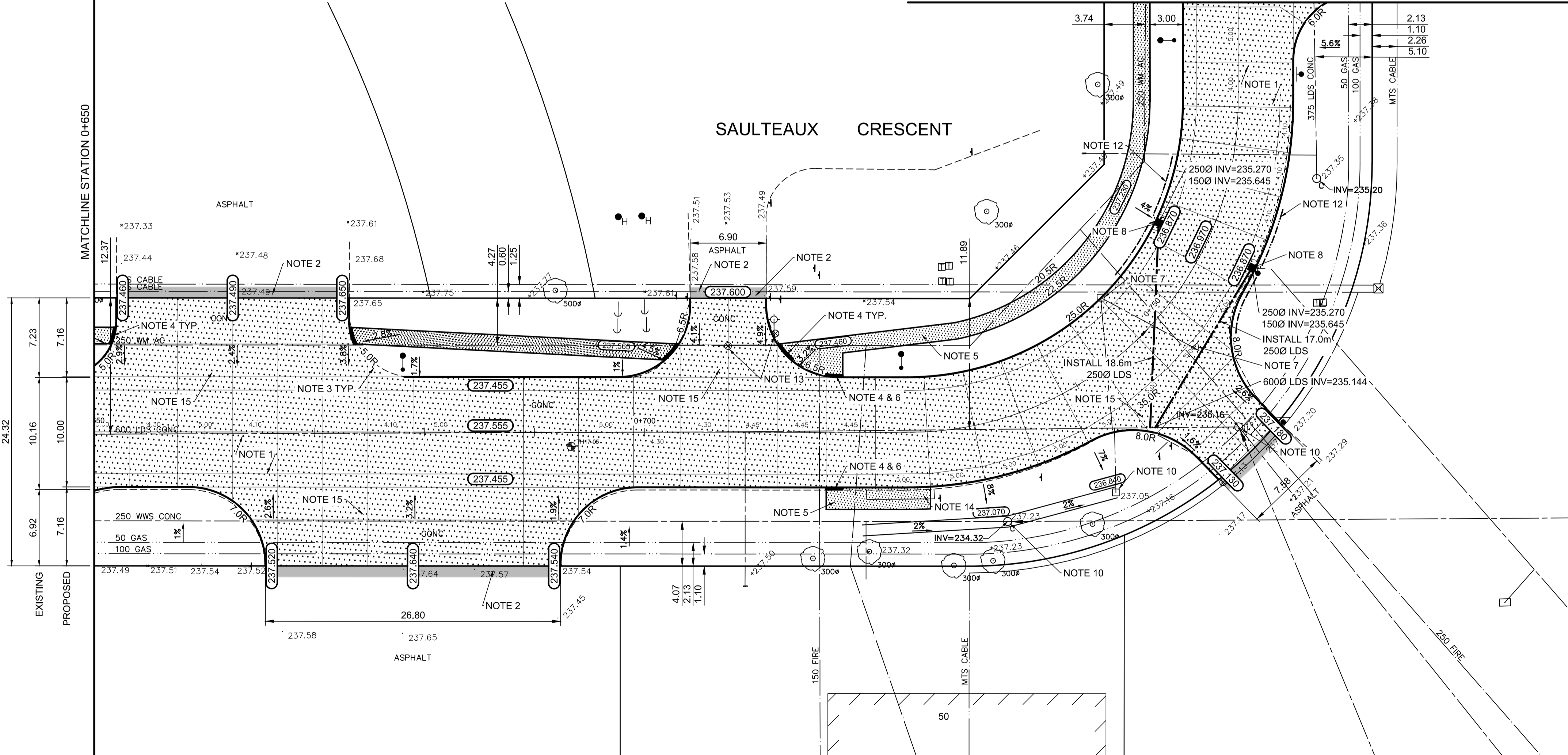
TESTHOLE TP17-02 LOG

	24.33		
EXISTING	7.12	10.02	7.19
PROPOSED	7.17	10.00	7.17

MATCHLINE STATION 0+780



SAULTEAUX CRESCENT



REFERENCE NOTES

- PAVEMENT DIMENSIONS ARE TO BACK OF CURB
- BASELINE IS CENTRE LINE RIGHT-OF-WAY
- PROPERTY LINES OBTAINED FROM CITY OF WINNIPEG L.B.I.S., AND NO SCALE FACTOR WAS APPLIED
- REFER TO AECOM FIELD BOOK NO. 4994

CONSTRUCTION NOTES

- REMOVE EXISTING CONCRETE PAVEMENT AND CONSTRUCT NEW 230mm CONCRETE PAVEMENT c/w PLAIN-DOWELLED JOINTS
- REMOVE EXISTING ASPHALT PAVEMENT AND CONSTRUCT NEW ASPHALTIC PAVEMENT TYPE 1A (75mm)
- CONSTRUCT NEW MODIFIED BARRIER CURB (180mm HT. INTEGRAL)
- CONSTRUCT NEW CURB RAMP (10mm HT. INTEGRAL)
- CONSTRUCT NEW 100mm CONCRETE SIDEWALK
- INSTALL NEW DETECTABLE WARNING SURFACE TILE
- REMOVE EXISTING CATCHBASIN AND CATCHPIT AND PLUG EXISTING LEAD
- INSTALL NEW MODIFIED BARRIER CURB AND GUTTER INLET FRAME AND COVER c/w CATCH BASIN (SD-024) AND CONNECT NEW 250mm LEAD TO EXISTING 600mm LAND DRAINAGE SEWER
- REMOVE EXISTING FRAME AND COVER AND PLACE NEW FRAME AND SOLID COVER (AP-004/AP-005)
- ADJUST EXISTING MANHOLE / CATCHBASIN TO GRADE
- INSTALL NEW CAST IRON RING
- INSTALL 150mm SUBDRAIN 6.0m ON EACH SIDE OF CATCHBASIN
- ADJUST EXISTING WATER VALVE TO GRADE
- REMOVE EXISTING CONCRETE SIDEWALK
- REMOVE EXISTING CONCRETE PAVEMENT AND CONSTRUCT NEW 200mm REINFORCED CONCRETE PAVEMENT

AECOM
Certificate of Authorization
AECOM Canada Ltd.
No. 4671 Date: _____

METRIC
WHOLE NUMBERS INDICATE MILLIMETRES
DECIMALIZED NUMBERS INDICATE METRES

150 mm W.M.		130 mm W.M.		HYDRO		C PROFILE	
◇	HYDRANT	◆	M.T.S.	—	M.T.S.	—	LEFT GUTTER
○	VALVE	○	CONCRETE	—	ASPHALT	—	RIGHT GUTTER
○	LAND DRAINAGE SEWER	○	ASPHALT	—	PROPERTY LINE	—	LEFT PROPERTY LINE
○	WASTEWATER SEWER	○	PROPERTY LINE	—	SURVEY BAR	—	RIGHT PROPERTY LINE
○	MANHOLE	○	SURVEY BAR	—	ELEVATION (235.750)		
○	CATCH BASIN	○	ELEVATION				
○	CATCH PIT	○	TREE				
○	JUNCTIONS	○	SIDEWALK RAMP				
○	CULVERT	○	CONCRETE SIDEWALK				
○	GAS	○	FENCE				
○	EXISTING	○	LEGEND - PLAN	○	PROPOSED	○	EXISTING
○	LEGEND - PLAN	○	PROPOSED	○	EXISTING	○	LEGEND - PROFILE
○	PROPOSED	○	EXISTING	○	LEGEND - PLAN	○	PROPOSED

LOCATION APPROVED UNDERGROUND STRUCTURES

SUPV. U/G STRUCTURES COMMITTEE DATE _____

NOTE:
LOCATION OF UNDERGROUND STRUCTURES AS SHOWN ARE BASED ON THE BEST INFORMATION AVAILABLE. BUT NO GUARANTEE IS GIVEN THAT ALL EXISTING UTILITIES ARE SHOWN OR THAT THE GIVEN LOCATIONS ARE EXACT. CONFIRMATION OF EXISTENCE AND EXACT LOCATION OF ALL SERVICES MUST BE OBTAINED FROM THE INDIVIDUAL UTILITIES BEFORE PROCEEDING WITH CONSTRUCTION.

B.M.	39-034	S.E. Cor. Moray St. & Saulteaux Cres. Tab. in N. Conc. Foundation No. 737 Moray St. 2 m E. & 0.1 m below Conc. blocks of N.W. Cor. of Bldg.
ELEV.	238.277	
NO.	REVISIONS	DATE BY
0	ISSUED FOR TENDER	03/05/2018 BC
A	ISSUED FOR REVIEW	02/02/2018 BC

AECOM

DESIGNED BY: SS
DRAWN BY: SS/RAM
HOR. SCALE: 1:250
VERTICAL: 1:10

CHECKED BY: BC/KWR
APPROVED BY: _____
RELEASED FOR CONSTRUCTION BY: _____

ENGINEER'S SEAL
PROVINCE OF MANITOBA
K.W. RAE
REGISTERED PROFESSIONAL ENGINEER

THE CITY OF WINNIPEG
PUBLIC WORKS DEPARTMENT
ENGINEERING DIVISION

2018/2019 INDUSTRIAL STREET RENEWAL PROGRAM

SAULTEAUX CRESCENT EAST LEG - MORAY ST TO MORAY ST
CONCRETE PAVEMENT RECONSTRUCTION
STATION 0+650 TO STATION 0+780

CITY DRAWING NUMBER
SHEET 04 OF 47

CONSULTANT DRAWING NO. CT-04