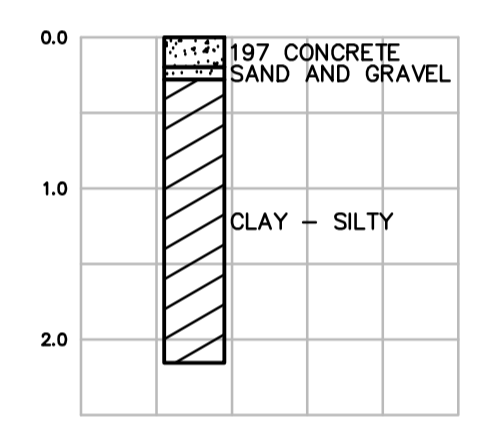
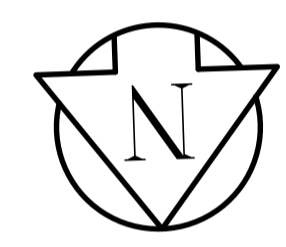
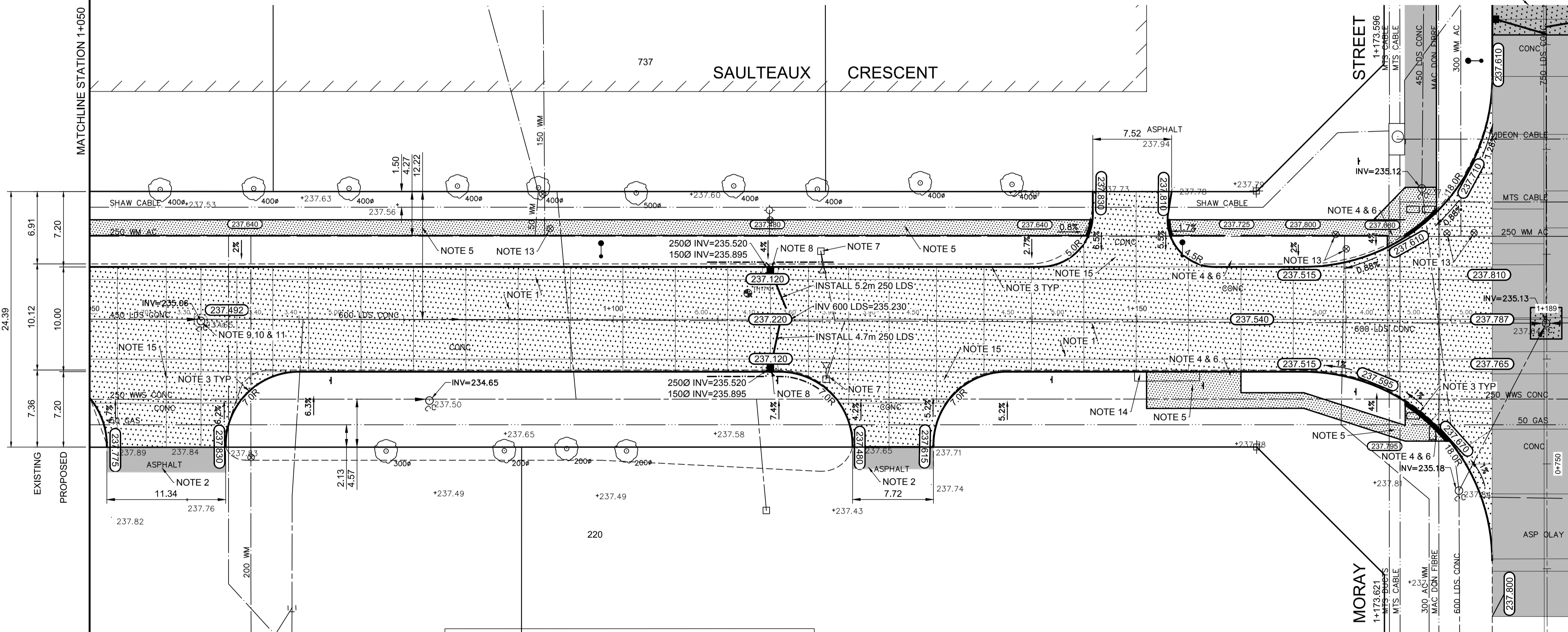


230 CONCRETE PAVEMENT
PLAIN-DOWELLED JOINTS
75 BASE COURSE MATERIAL
150 CRUSHED SUB BASE MATERIAL
(MAX. SIZE 50mm)
450 CRUSHED SUB BASE MATERIAL
(MAX. SIZE 150mm)
SEPARATION GEOTEXTILE FABRIC
GEOGRID
PREPARED SUBGRADE

TYPICAL CROSS SECTION

MATCHLINE STATION 1+050



TESTHOLE TP17-01 LOG

REFERENCE NOTES

- A. PAVEMENT DIMENSIONS ARE TO BACK OF CURB
- B. BASELINE IS CENTRE LINE RIGHT-OF-WAY
- C. PROPERTY LINES OBTAINED FROM CITY OF WINNIPEG L.B.I.S., AND NO SCALE FACTOR WAS APPLIED
- D. REFER TO AECOM FIELD BOOK NO. 4994

CONSTRUCTION NOTES

1. REMOVE EXISTING CONCRETE PAVEMENT AND CONSTRUCT NEW 230mm CONCRETE PAVEMENT c/w PLAIN-DOWELLED JOINTS
2. REMOVE EXISTING ASPHALT PAVEMENT AND CONSTRUCT NEW ASPHALTIC PAVEMENT TYPE 1A (75mm)
3. CONSTRUCT NEW MODIFIED BARRIER CURB (180mm HT. INTEGRAL)
4. CONSTRUCT NEW CURB RAMP (10mm HT. INTEGRAL)
5. CONSTRUCT NEW 100mm CONCRETE SIDEWALK
6. INSTALL NEW DETECTABLE WARNING SURFACE TILE
7. REMOVE EXISTING CATCHBASIN AND CATCHPIT AND PLUG EXISTING LEAD
8. INSTALL NEW MODIFIED BARRIER CURB AND GUTTER INLET FRAME AND COVER c/w CATCH BASIN (SD-024) AND CONNECT NEW 250mm LEAD TO EXISTING 600mm LAND DRAINAGE SEWER
9. REMOVE EXISTING FRAME AND COVER AND PLACE NEW FRAME AND SOLID COVER (AP-004/AP-005)
10. ADJUST EXISTING MANHOLE TO GRADE
11. INSTALL NEW CAST IRON RING
12. INSTALL 150mm SUBDRAIN 6.0m ON EACH SIDE OF CATCHBASIN
13. ADJUST EXISTING WATER VALVE TO GRADE
14. REMOVE EXISTING CONCRETE SIDEWALK
15. REMOVE EXISTING CONCRETE PAVEMENT AND CONSTRUCT NEW 200mm REINFORCED CONCRETE PAVEMENT

AECOM
Certificate of Authorization
AECOM Canada Ltd.
No. 4671 Date: _____

METRIC
WHOLE NUMBERS INDICATE MILLIMETRES
DECIMALIZED NUMBERS INDICATE METRES

150 mm W.M.	WATERMAIN	150 mm W.M.	HYDRO	— x —	Q PROFILE
Hydrant	HYDRANT	M.T.S.	M.T.S.	— □ —	LEFT GUTTER
Valve	VALVE	CONCRETE	CONCRETE	— ○ —	RIGHT GUTTER
300mm L.D.S.	LAND DRAINAGE SEWER	ASPHALT	ASPHALT	— ◇ —	LEFT PROPERTY LINE
250mm W.W.S.	WASTEWATER SEWER	PROPERTY LINE	PROPERTY LINE	— ○ —	RIGHT PROPERTY LINE
Manhole	MANHOLE	SURVEY BAR	SURVEY BAR		
Catch Basin	CATCH BASIN	ELEVATION (235.750)	ELEVATION		
Catch Pit	CATCH PIT	TREE	TREE		
Junctions	JUNCTIONS	SIDEWALK RAMP	SIDEWALK RAMP		
Culvert	CULVERT	CONCRETE SIDEWALK	CONCRETE SIDEWALK		
Gas	GAS	FENCE	FENCE		
EXISTING	LEGEND - PLAN	PROPOSED	EXISTING	LEGEND - PLAN	PROPOSED
EXISTING	LEGEND - PROFILE	PROPOSED	EXISTING	LEGEND - PROFILE	PROPOSED

LOCATION APPROVED UNDERGROUND STRUCTURES

SUPV. U/G STRUCTURES COMMITTEE DATE _____

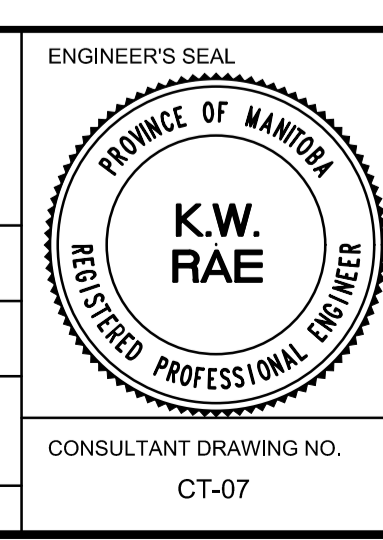
NOTE:
LOCATION OF UNDERGROUND STRUCTURES AS SHOWN ARE BASED ON THE BEST INFORMATION AVAILABLE. BUT NO GUARANTEE IS GIVEN THAT ALL EXISTING UTILITIES ARE SHOWN OR THAT THE GIVEN LOCATIONS ARE EXACT. CONFIRMATION OF EXISTENCE AND EXACT LOCATION OF ALL SERVICES MUST BE OBTAINED FROM THE INDIVIDUAL UTILITIES BEFORE PROCEEDING WITH CONSTRUCTION.

B.M.	39-034	S.E. Cor. Moray St. & Saulteaux Cres. Tab. in N. Conc. Foundation No. 737 Moray St. 2 m E. & 0.1 m below Conc. blocks of N.W. Cor. of Bldg.
ELEV.	238.277	
NO.	REVISIONS	DATE BY
0	ISSUED FOR TENDER	03/05/2018 BC
A	ISSUED FOR REVIEW	02/02/2018 BC

AECOM

DESIGNED BY: SS
DRAWN BY: SS/RAM
HOR. SCALE: 1:250
VERTICAL: 1:10

CHECKED BY: BC/KWR
APPROVED BY: _____
RELEASED FOR CONSTRUCTION BY: _____



THE CITY OF WINNIPEG
PUBLIC WORKS DEPARTMENT
ENGINEERING DIVISION

2018/2019 INDUSTRIAL STREET RENEWAL PROGRAM

SAULTEAUX CRESCENT EAST LEG - MORAY ST TO MORAY ST
CONCRETE PAVEMENT RECONSTRUCTION
STATION 1+050 TO MORAY STREET

CITY DRAWING NUMBER: SHEET 07 OF 47

CONSULTANT DRAWING NO. CT-07