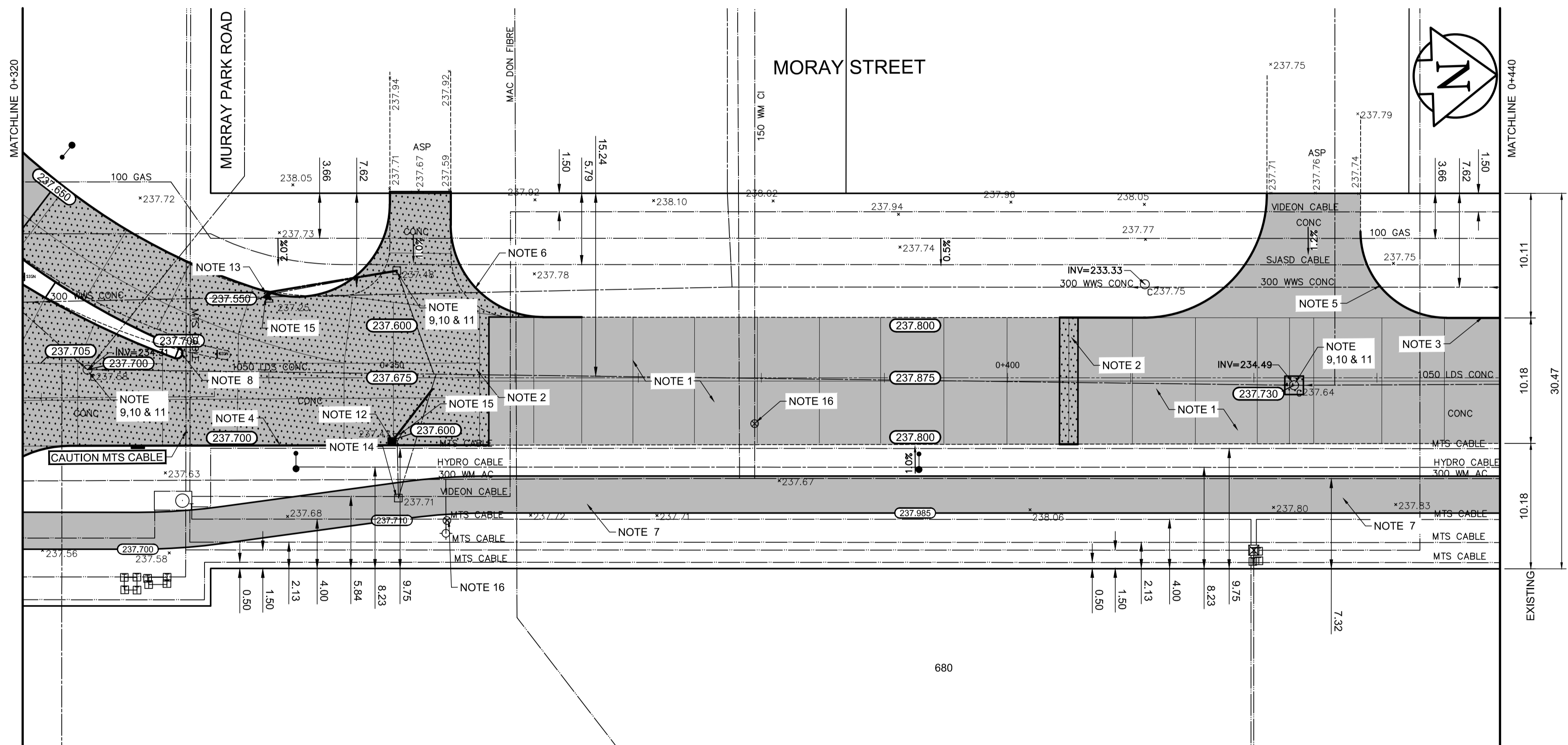


TYPICAL CROSS SECTION



REFERENCE NOTES

- A. PAVEMENT DIMENSIONS ARE TO BACK OF CURB
- B. BASELINE IS CENTRE LINE RIGHT-OF-WAY
- C. PROPERTY LINES OBTAINED FROM CITY OF WINNIPEG L.B.I.S., AND NO SCALE FACTOR WAS APPLIED
- D. REFER TO AECOM FIELD BOOK NO. 4994

CONSTRUCTION NOTES

1. PLACE NEW ASPHALTIC PAVEMENT TYPE 1A (100mm)
2. REMOVE EXISTING CONCRETE PAVEMENT AND CONSTRUCT NEW 200mm REINFORCED CONCRETE PAVEMENT *o/w* NEW ASPHALTIC OVERLAY
3. RENEW EXISTING CONCRETE BARRIER CURB (100mm REVEAL HT. DOWELLED)
4. CONSTRUCT NEW CONCRETE BARRIER CURB (100mm REVEAL HT. SEPERATE)
5. REMOVE EXISTING CONCRETE BARRIER CURB AND CONSTRUCT NEW MODIFIED BARRIER CURB (150mm REVEAL HT. DOWELLED)
6. CONSTRUCT NEW MODIFIED BARRIER CURB (150mm REVEAL HT. SEPERATE)
7. CONSTRUCT NEW ACTIVE TRANSPORTATION ASPHALT PATHWAY
8. RENEW EXISTING MONOLITHIC CONCRETE BULLNOSE
9. ADJUST EXISTING MANHOLE/CATCHBASIN TO GRADE
10. REMOVE EXISTING FRAME AND COVER AND INSTALL NEW FRAME AND SOLID COVER (AP-006 AND AP-007)
11. INSTALL NEW CAST IRON RISER RING
12. INSTALL NEW CURB AND GUTTER INLET *o/w* CATCHBASIN (SD-024) AND CONNECT TO EXISTING LEAD
13. INSTALL NEW CURB AND GUTTER INLET *o/w* CATCHPIT (SD-023) AND CONNECT TO EXISTING CATCHBASIN
14. REMOVE EXISTING CATCHBASIN
15. REMOVE EXISTING CATCHPIT AND ABANDON LEAD
16. ADJUST EXISTING WATER VALVE TO GRADE

AECOM
 Certificate of Authorization
 AECOM Canada Ltd.
 No. 4671 Date: _____

METRIC
 WHOLE NUMBERS INDICATE MILLIMETRES
 DECIMALIZED NUMBERS INDICATE METRES

150 mm W.M.	WATERMAIN	150 mm W.M.	HYDRO	— x —	Q PROFILE
Hydrant	HYDRANT	Hydrant	M.T.S.	— □ —	WEST GUTTER
Valve	VALVE	Valve	CONCRETE	— ○ —	EAST GUTTER
300mm L.D.S.	LAND DRAINAGE SEWER	300mm L.D.S.	ASPHALT	— ◇ —	N/W PROPERTY LINE
250mm W.W.S.	WASTEWATER SEWER	250mm W.W.S.	PROPERTY LINE	— ○ —	S/E PROPERTY LINE
Manhole	MANHOLE	Manhole	SURVEY BAR		
Catch Basin	CATCH BASIN	Catch Basin	ELEVATION (235.750)		
Catch Pit	CATCH PIT	Catch Pit	TREE		
Junctions	JUNCTIONS	Junctions	SIDEWALK RAMP		
Culvert	CULVERT	Culvert	CONCRETE SIDEWALK		
Gas	GAS	Gas	FENCE		
EXISTING	LEGEND - PLAN	PROPOSED	EXISTING	LEGEND - PROFILE	PROPOSED

LOCATION APPROVED UNDERGROUND STRUCTURES

SUPV. U/G STRUCTURES COMMITTEE DATE _____

NOTE:
 LOCATION OF UNDERGROUND STRUCTURES AS SHOWN ARE BASED ON THE BEST INFORMATION AVAILABLE. BUT NO GUARANTEE IS GIVEN THAT ALL EXISTING UTILITIES ARE SHOWN OR THAT THE GIVEN LOCATIONS ARE EXACT. CONFIRMATION OF EXISTENCE AND EXACT LOCATION OF ALL SERVICES MUST BE OBTAINED FROM THE INDIVIDUAL UTILITIES BEFORE PROCEEDING WITH CONSTRUCTION.

B.M.	39-034	S.E. Cor. Moray St. & Saulteaux Cres. Tabl. in N. Conc. Foundation No. 737 Moray St. 2 m E. & 0.1 m below Conc. blocks of N.W. Cor. of Bldg.
ELEV.	238.277	
NO.	REVISIONS	DATE BY
0	ISSUED FOR TENDER	03/05/2018 BC
A	ISSUED FOR REVIEW	02/02/2018 BC

AECOM

DESIGNED BY: SS
 CHECKED BY: BC/KWR

DRAWN BY: SS
 APPROVED BY:

HOR. SCALE: 1:250
 VERTICAL: 1:10

RELEASED FOR CONSTRUCTION BY: _____
 DATE: _____

ENGINEER'S SEAL

PROVINCE OF MANITOBA

K.W. RAE

REGISTERED PROFESSIONAL ENGINEER

CONSULTANT DRAWING NO. CT-10

THE CITY OF WINNIPEG
 PUBLIC WORKS DEPARTMENT
 ENGINEERING DIVISION

2018/2019 INDUSTRIAL STREET RENEWAL PROGRAM

MORAY STREET - MURRAY PARK ROAD TO SAULTEAUX N LEG
 PAVEMENT REHABILITATION
 STATION 0+320 TO STATION 0+440

CITY DRAWING NUMBER
 SHEET 10 OF 47