

REFERENCE NOTES

- A. PAVEMENT DIMENSIONS ARE TO BACK OF CURB
- B. BASELINE IS CENTRE LINE RIGHT-OF-WAY
- C. PROPERTY LINES OBTAINED FROM CITY OF WINNIPEG L.B.I.S., AND NO SCALE FACTOR WAS APPLIED
- D. REFER TO AECOM FIELD BOOK NO. 4994

CONSTRUCTION NOTES

1. REMOVE EXISTING ASPHALTIC PAVEMENT AND CONSTRUCT NEW ASPHALTIC PAVEMENT TYPE 1A (100mm)
2. REMOVE EXISTING CONCRETE PAVEMENT AND CONSTRUCT NEW 200mm REINFORCED CONCRETE PAVEMENT o/w NEW ASPHALTIC OVERLAY
3. RENEW EXISTING CONCRETE BARRIER CURB (100mm REVEAL HT. DOWELLED)
4. CONSTRUCT NEW CONCRETE BARRIER CURB (100mm REVEAL HT. SEPERATE)
5. REMOVE EXISTING CONCRETE BARRIER CURB AND CONSTRUCT NEW MODIFIED BARRIER CURB (150mm REVEAL HT. DOWELLED)
6. REMOVE EXISTING CONCRETE BARRIER CURB AND CONSTRUCT NEW CURB RAMP (10mm REV. HT. INTEGRAL)
7. CONSTRUCT NEW ACTIVE TRANSPORTATION ASPHALT PATHWAY
8. CONSTRUCT NEW 100mm CONCRETE SIDEWALK
9. INSTALL NEW DETECTABLE WARNING SURFACE TILE
10. ADJUST EXISTING MANHOLE/CATCHBASIN TO GRADE
11. REMOVE EXISTING FRAME AND COVER AND INSTALL NEW FRAME AND SOLID COVER (AP-006 AND AP-007)
12. INSTALL NEW CAST IRON RISER RING
13. INSTALL NEW CATCHBASIN (SD-025) AND CONNECT TO EXISTING 750mm CONCRETE LDS
14. ADJUST EXISTING WATER VALVE TO GRADE



METRIC
WHOLE NUMBERS INDICATE MILLIMETRES
DECIMALIZED NUMBERS INDICATE METRES

150 mm W.M.	WATERMAIN	150 mm W.M.	HYDRO	—X—	Q PROFILE
Hydrant	HYDRANT	Hydrant	M.T.S.	—□—	WEST GUTTER
Valve	VALVE	Valve	CONCRETE	—●—	EAST GUTTER
300mm L.D.S.	LAND DRAINAGE SEWER	300mm L.D.S.	ASPHALT	—◇—	N/W PROPERTY LINE
250mm W.W.S.	WASTEWATER SEWER	250mm W.W.S.	PROPERTY LINE	—○—	S/E PROPERTY LINE
Manhole	MANHOLE	Manhole	SURVEY BAR	—+—	
Catch Basin	CATCH BASIN	Catch Basin	ELEVATION	(235.750)	
Catch Pit	CATCH PIT	Catch Pit	TREE	—○—	
Junctions	JUNCTIONS	Junctions	SIDEWALK RAMP	—▲—	
Culvert	CULVERT	Culvert	CONCRETE SIDEWALK	—■—	
Gas	GAS	Gas	FENCE	—▬—	
EXISTING	LEGEND - PLAN	PROPOSED	LEGEND - PLAN	PROPOSED	EXISTING
					LEGEND - PROFILE
					PROPOSED

LOCATION APPROVED UNDERGROUND STRUCTURES

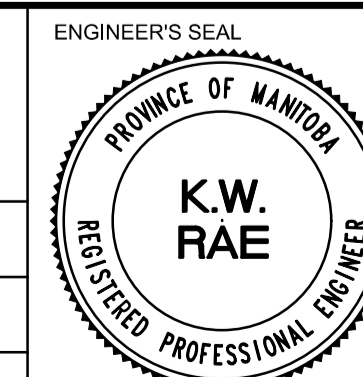
SUPV. U/G STRUCTURES COMMITTEE DATE

NOTE:
LOCATION OF UNDERGROUND STRUCTURES AS SHOWN ARE BASED ON THE BEST INFORMATION AVAILABLE. BUT NO GUARANTEE IS GIVEN THAT ALL EXISTING UTILITIES ARE SHOWN OR THAT THE GIVEN LOCATIONS ARE EXACT. CONFIRMATION OF EXISTENCE AND EXACT LOCATION OF ALL SERVICES MUST BE OBTAINED FROM THE INDIVIDUAL UTILITIES BEFORE PROCEEDING WITH CONSTRUCTION.

B.M.	39-034	S.E. Cor. Moray St. & Saulteaux Cres. Tabl. in N. Conc. Foundation No. 737 Moray St. 2 m E. & 0.1 m below Conc. blocks of N.W. Cor. of Bldg.
ELEV.	238.277	
NO.	REVISIONS	DATE BY
0	ISSUED FOR TENDER	03/05/2018 BC
A	ISSUED FOR REVIEW	02/02/2018 BC



DESIGNED BY	SS	CHECKED BY	BC/KWR
DRAWN BY	SS	APPROVED BY	
HOR. SCALE:	1:250	RELEASED FOR CONSTRUCTION BY:	
VERTICAL:	1:10	DATE	



THE CITY OF WINNIPEG
PUBLIC WORKS DEPARTMENT
ENGINEERING DIVISION

2018/2019 INDUSTRIAL STREET RENEWAL PROGRAM	CITY DRAWING NUMBER
MORAY STREET - MURRAY PARK ROAD TO SAULTEAUX N LEG PAVEMENT REHABILITATION STATION 0+560 TO STATION 0+680	SHEET 12 OF 47

CONSULTANT DRAWING NO. CT-12