

REFERENCE NOTES

- A. PAVEMENT DIMENSIONS ARE TO BACK OF CURB
- B. BASELINE IS CENTRE LINE RIGHT-OF-WAY
- C. PROPERTY LINES OBTAINED FROM CITY OF WINNIPEG L.B.I.S., AND NO SCALE FACTOR WAS APPLIED
- D. REFER TO AECOM FIELD BOOK NO. 4994

CONSTRUCTION NOTES

1. PLACE NEW ASPHALTIC PAVEMENT TYPE 1A (100mm)
2. REMOVE EXISTING ASPHALTIC PAVEMENT AND CONSTRUCT NEW ASPHALTIC PAVEMENT TYPE 1A (100mm)
3. REMOVE EXISTING CONCRETE PAVEMENT AND CONSTRUCT NEW 200mm REINFORCED CONCRETE PAVEMENT c/w NEW ASPHALTIC OVERLAY
4. REMOVE EXISTING CONCRETE PAVEMENT AND CONSTRUCT NEW 200mm REINFORCED CONCRETE PAVEMENT
5. RENEW EXISTING CONCRETE BARRIER CURB (100mm REVEAL HT. DOWELLED)
6. CONSTRUCT NEW CONCRETE BARRIER CURB (100mm REVEAL HT. SEPERATE)
7. REMOVE EXISTING CONCRETE BARRIER CURB AND CONSTRUCT NEW MODIFIED BARRIER CURB (150mm REVEAL HT. DOWELLED)
8. CONSTRUCT NEW ACTIVE TRANSPORTATION ASPHALT PATHWAY
9. ADJUST EXISTING MANHOLE/CATCHBASIN TO GRADE
10. REMOVE EXISTING FRAME AND COVER AND INSTALL NEW FRAME AND SOLID COVER (AP-006 AND AP-007)
11. INSTALL NEW CAST IRON RISER RING
12. INSTALL NEW CURB AND GUTTER INLET c/w CATCHBASIN (SD-024) AND CONNECT TO EXISTING 750mm CONCRETE LDS
13. REMOVE EXISTING CATCHBASIN
14. REMOVE EXISTING CATCHPIT AND ABANDON LEAD
15. ADJUST EXISTING WATER VALVE TO GRADE



METRIC
WHOLE NUMBERS INDICATE MILLIMETRES
DECIMALIZED NUMBERS INDICATE METRES

150 mm W.M.	WATERMAIN	150 mm W.M.	HYDRO	— — — — —	Q PROFILE
Hydrant	HYDRANT	Hydrant	M.T.S.	— — — — —	WEST GUTTER
Valve	VALVE	Valve	CONCRETE	— — — — —	EAST GUTTER
300mm L.D.S.	LAND DRAINAGE SEWER	300mm L.D.S.	ASPHALT	— — — — —	N/W PROPERTY LINE
250mm W.W.S.	WASTEWATER SEWER	250mm W.W.S.	PROPERTY LINE	— — — — —	S/E PROPERTY LINE
Manhole	MANHOLE	Manhole	SURVEY BAR	— — — — —	
Catch Basin	CATCH BASIN	Catch Basin	ELEVATION (235.750)	— — — — —	
Catch Pit	CATCH PIT	Catch Pit	TREE	— — — — —	
Junctions	JUNCTIONS	Junctions	SIDEWALK RAMP	— — — — —	
Culvert	CULVERT	Culvert	CONCRETE SIDEWALK	— — — — —	
Gas	GAS	Gas	FENCE	— — — — —	
EXISTING	LEGEND - PLAN	PROPOSED	EXISTING	LEGEND - PLAN	PROPOSED
EXISTING	LEGEND - PROFILE	PROPOSED	EXISTING	LEGEND - PROFILE	PROPOSED

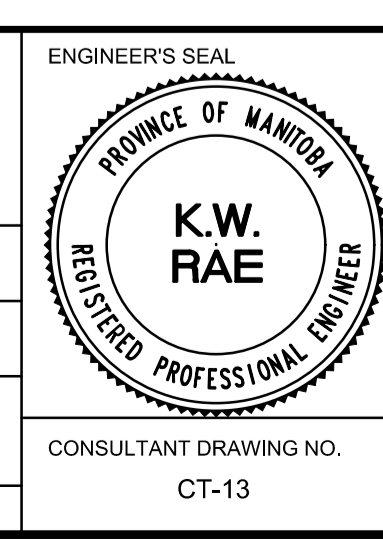
LOCATION APPROVED UNDERGROUND STRUCTURES

SUPV. U/G STRUCTURES COMMITTEE DATE

NOTE:
LOCATION OF UNDERGROUND STRUCTURES AS SHOWN ARE BASED ON THE BEST INFORMATION AVAILABLE. BUT NO GUARANTEE IS GIVEN THAT ALL EXISTING UTILITIES ARE SHOWN OR THAT THE GIVEN LOCATIONS ARE EXACT. CONFIRMATION OF EXISTENCE AND EXACT LOCATION OF ALL SERVICES MUST BE OBTAINED FROM THE INDIVIDUAL UTILITIES BEFORE PROCEEDING WITH CONSTRUCTION.

B.M.	39-034	S.E. Cor. Moray St. & Sauleteux Cres. Tabl. in N. Conc. Foundation No. 737 Moray St. 2 m E. & 0.1 m below Conc. blocks of N.W. Cor. of Bldg.
ELEV.	238.277	
NO.	REVISIONS	DATE BY
0	ISSUED FOR TENDER	03/05/2018 BC
A	ISSUED FOR REVIEW	02/02/2018 BC

AECOM	
DESIGNED BY	SS
CHECKED BY	BC/KWR
DRAWN BY	SS
APPROVED BY	
HOR. SCALE:	1:250
VERTICAL:	1:10
RELEASED FOR CONSTRUCTION BY:	
DATE	



THE CITY OF WINNIPEG
PUBLIC WORKS DEPARTMENT
ENGINEERING DIVISION

2018/2019 INDUSTRIAL STREET RENEWAL PROGRAM

MORAY STREET - MURRAY PARK ROAD TO SAULTEUX N LEG
PAVEMENT REHABILITATION
STATION 0+680 TO SAULTEUX N LEG

CITY DRAWING NUMBER
SHEET 13 OF 47

CONSULTANT DRAWING NO. CT-13