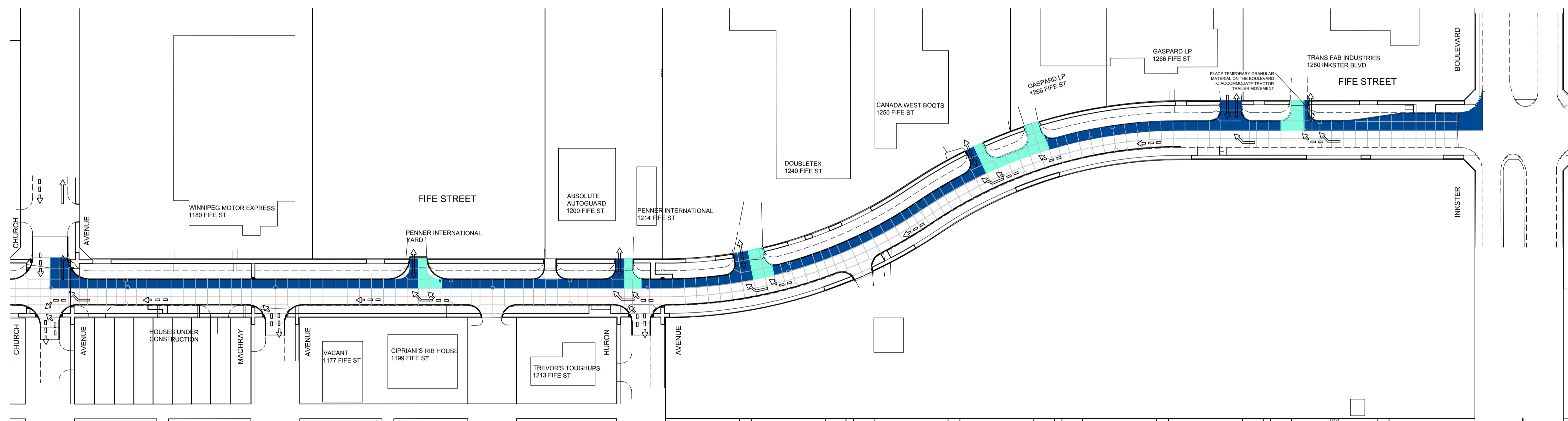


- STAGE 1 CONSTRUCTION LIMITS
- STAGE 1 CONSTRUCTION TRAFFIC FLOW
- STAGE 1A CONSTRUCTION LIMITS
- STAGE 1A CONSTRUCTION TRAFFIC FLOW

STAGE 1 CONSTRUCTION



- STAGE 2 CONSTRUCTION LIMITS
- STAGE 2 CONSTRUCTION TRAFFIC FLOW
- STAGE 2B CONSTRUCTION LIMITS
- STAGE 2B CONSTRUCTION TRAFFIC FLOW

STAGE 2 CONSTRUCTION



Certificate of Authorization
AECOM Canada Ltd.
No. 4671 Date: _____

METRIC
WHOLE NUMBERS INDICATE MILLIMETRES
DECIMALIZED NUMBERS INDICATE METRES

150 mm W.M.	WATERMAIN	150 mm W.M.	HYDRO	— x —	Q PROFILE
Hydrant	HYDRANT	Hydrant	M.T.S.	Left Gutter	LEFT GUTTER
Valve	VALVE	Valve	CONCRETE	Right Gutter	RIGHT GUTTER
300mm L.D.S.	LAND DRAINAGE SEWER	300mm L.D.S.	ASPHALT	Left Property Line	LEFT PROPERTY LINE
250mm W.W.S.	WASTEWATER SEWER	250mm W.W.S.	PROPERTY LINE	Right Property Line	RIGHT PROPERTY LINE
Manhole	MANHOLE	Manhole	SURVEY BAR		
Catch Basin	CATCH BASIN	Catch Basin	ELEVATION (235.750)		
Catch Pit	CATCH PIT	Catch Pit	TREE		
Junctions	JUNCTIONS	Junctions	SIDEWALK RAMP		
Culvert	CULVERT	Culvert	CONCRETE SIDEWALK		
Gas	GAS	Gas	FENCE		
EXISTING	LEGEND - PLAN	PROPOSED	EXISTING	LEGEND - PROFILE	PROPOSED

LOCATION APPROVED UNDERGROUND STRUCTURES

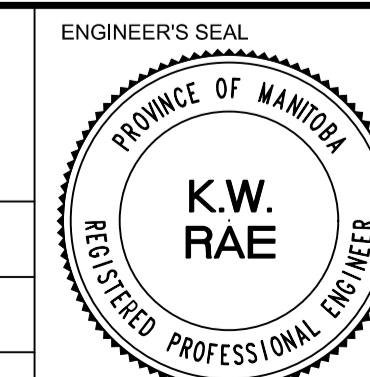
SUPV. U/G STRUCTURES COMMITTEE DATE

NOTE:
LOCATION OF UNDERGROUND STRUCTURES AS SHOWN ARE BASED ON THE BEST INFORMATION AVAILABLE. BUT NO GUARANTEE IS GIVEN THAT ALL EXISTING UTILITIES ARE SHOWN OR THAT THE GIVEN LOCATIONS ARE EXACT. CONFIRMATION OF EXISTENCE AND EXACT LOCATION OF ALL SERVICES MUST BE OBTAINED FROM THE INDIVIDUAL UTILITIES BEFORE PROCEEDING WITH CONSTRUCTION.

B.M.	39-034	S.E. Cor. Moray St. & Saultheux Cres. - Tbt. in N. Conc. Foundation No. 737 Moray St., 2 m E. & 0.1 m below Conc. blocks of N.W. Cor. of Bldg.
ELEV.	238.277	
NO.	REVISIONS	DATE BY
0	ISSUED FOR TENDER	03/05/2018 BC
A	ISSUED FOR REVIEW	02/02/2018 BC



DESIGNED BY	BC	CHECKED BY	BC/KWR
DRAWN BY	SS	APPROVED BY	
HOR. SCALE:	1:1000	RELEASED FOR CONSTRUCTION BY:	
VERTICAL:	N/A	DATE	



THE CITY OF WINNIPEG
PUBLIC WORKS DEPARTMENT
ENGINEERING DIVISION

2018/2019 INDUSTRIAL STREET RENEWAL PROGRAM
FIFE STREET - INKSTER BOULEVARD TO CHURCH AVENUE PROPOSED STAGE 1 & 2 WORKS

CITY DRAWING NUMBER
SHEET 14 OF 47

CONSULTANT DRAWING NO. CT-14