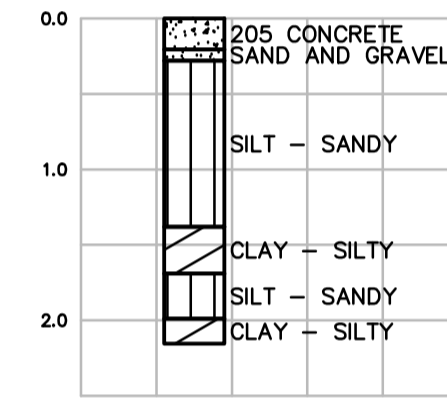
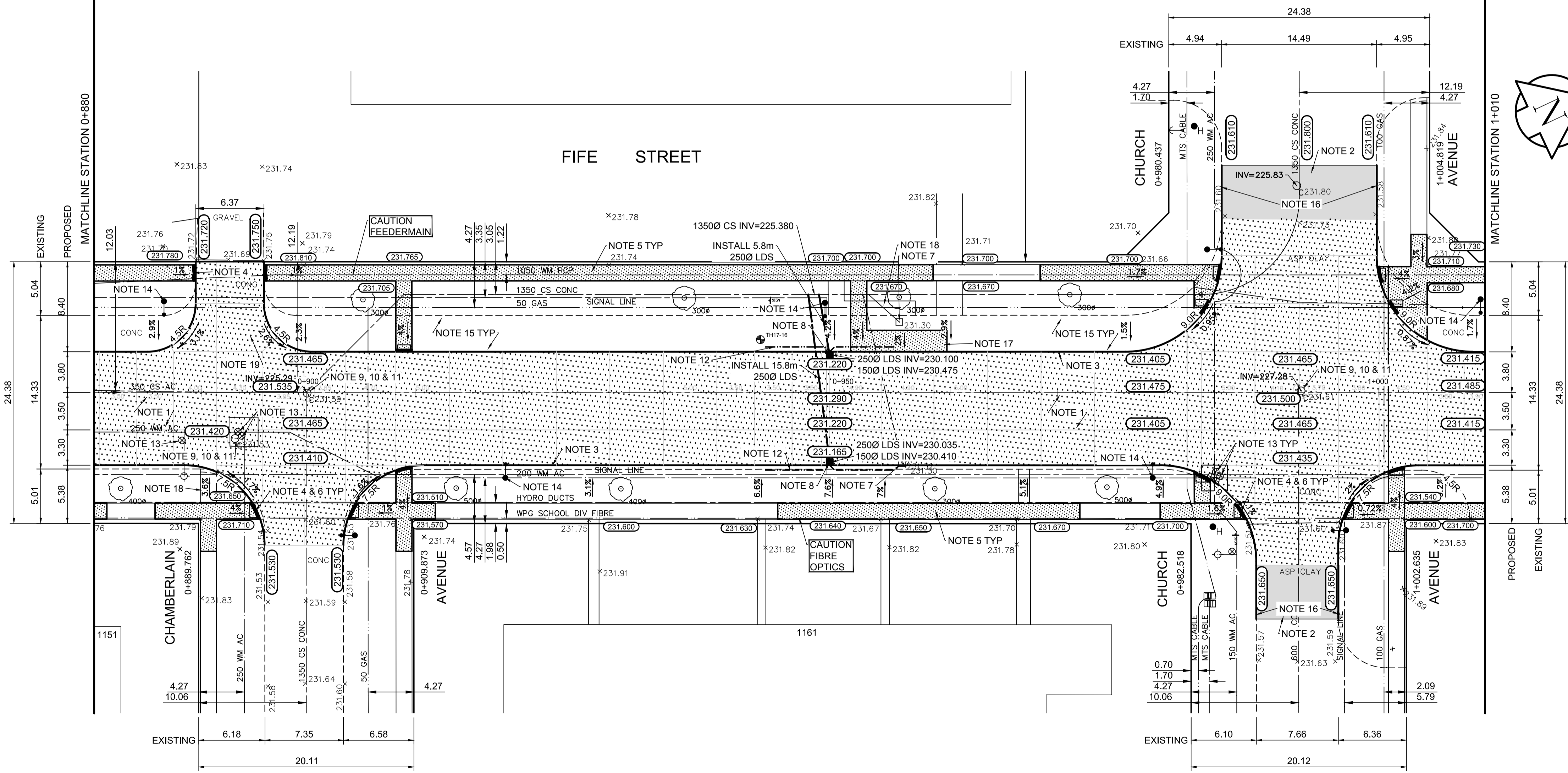


230 CONCRETE PAVEMENT
PLAIN-DOWELLED JOINTS
75 BASE COURSE MATERIAL
150 CRUSHED SUB BASE MATERIAL
(MAX. SIZE 50mm)
375 CRUSHED SUB BASE MATERIAL
(MAX. SIZE 100mm)
SEPARATION GEOTEXTILE FABRIC
GEOGRID
PREPARED SUBGRADE

TYPICAL CROSS SECTION



TESTHOLE TP17-16 LOG



REFERENCE NOTES

- A. PAVEMENT DIMENSIONS ARE TO BACK OF CURB
- B. BASELINE IS CENTRE LINE RIGHT-OF-WAY
- C. PROPERTY LINES OBTAINED FROM CITY OF WINNIPEG L.B.I.S., AND NO SCALE FACTOR WAS APPLIED
- D. REFER TO AECOM FIELD BOOK NO. 4993

CONSTRUCTION NOTES

1. REMOVE EXISTING CONCRETE PAVEMENT AND CONSTRUCT NEW 230mm PLAIN DOWELLED CONCRETE PAVEMENT
2. REMOVE EXISTING ASPHALT PAVEMENT AND CONSTRUCT NEW ASPHALTIC PAVEMENT TYPE 1A (75mm)
3. CONSTRUCT NEW MODIFIED BARRIER CURB (180mm HT. INTEGRAL)
4. CONSTRUCT NEW CURB RAMP (10mm HT. INTEGRAL)
5. RENEW EXISTING 100mm CONCRETE SIDEWALK
6. INSTALL NEW DETECTABLE WARNING SURFACE TILE
7. REMOVE EXISTING CATCHBASIN AND CATCHPIT AND PLUG EXISTING LEAD
8. INSTALL NEW MODIFIED BARRIER CURB AND GUTTER INLET FRAME AND COVER w/ CATCH BASIN (SD-024) AND CONNECT NEW 250mm LEAD TO EXISTING 300mm COMBINED SEWER
9. REMOVE EXISTING FRAME AND COVER AND PLACE NEW FRAME AND SOLID COVER (AP-004/AP-005)
10. ADJUST EXISTING MANHOLE TO GRADE
11. INSTALL NEW CAST IRON RING
12. INSTALL 150mm SUBDRAIN 6.0m ON EACH SIDE OF CATCHBASIN
13. ADJUST EXISTING WATER VALVE TO GRADE
14. REMOVE EXISTING LIGHT STANDARD (BY OTHERS)
15. REMOVE EXISTING CONCRETE PAVEMENT AND PLACE AND COMPACT SUITABLE SITE MATERIAL
16. RENEW EXISTING CONCRETE BARRIER CURB (DOWELLED 100mm HT)
17. CONSTRUCT NEW 100mm CONCRETE SIDEWALK
18. REMOVE EXISTING CONCRETE SIDEWALK
19. REMOVE EXISTING CONCRETE PAVEMENT AND CONSTRUCT NEW 200mm REINFORCED CONCRETE PAVEMENT

AECOM
Certificate of Authorization
AECOM Canada Ltd.
No. 4671 Date: _____

METRIC
WHOLE NUMBERS INDICATE MILLIMETRES
DECIMALIZED NUMBERS INDICATE METRES

150 mm W.M.	WATERMAIN	130 mm W.M.	HYDRO	— x —	Q PROFILE
Hydrant	HYDRANT	300mm L.D.S.	M.T.S.	— □ —	WEST GUTTER
Valve	VALVE	250mm W.W.S.	CONCRETE	— ○ —	EAST GUTTER
300mm L.D.S.	LAND DRAINAGE SEWER		ASPHALT	— ◇ —	N/W PROPERTY LINE
250mm W.W.S.	WASTEWATER SEWER		PROPERTY LINE	— ○ —	S/E PROPERTY LINE
Manhole	MANHOLE		SURVEY BAR		
Catch Basin	CATCH BASIN		ELEVATION (235.750)		
Catch Pit	CATCH PIT		TREE		
Junctions	JUNCTIONS		SIDEWALK RAMP		
Culvert	CULVERT		CONCRETE SIDEWALK		
Gas	GAS		FENCE		
EXISTING	LEGEND - PLAN	PROPOSED	EXISTING	LEGEND - PLAN	PROPOSED
EXISTING	LEGEND - PROFILE	PROPOSED	EXISTING	LEGEND - PROFILE	PROPOSED

LOCATION APPROVED UNDERGROUND STRUCTURES

SUPV. U/G STRUCTURES COMMITTEE DATE _____

NOTE:
LOCATION OF UNDERGROUND STRUCTURES AS SHOWN ARE BASED ON THE BEST INFORMATION AVAILABLE. BUT NO GUARANTEE IS GIVEN THAT ALL EXISTING UTILITIES ARE SHOWN OR THAT THE GIVEN LOCATIONS ARE EXACT. CONFIRMATION OF EXISTENCE AND EXACT LOCATION OF ALL SERVICES MUST BE OBTAINED FROM THE INDIVIDUAL UTILITIES BEFORE PROCEEDING WITH CONSTRUCTION.

B.M. 24-025	N.W. Cor. Mountain Ave. & Fife St. Tbl. In 12m Conc. Pipe beneath Valve Box 1.9m S. of N. L. of ELEV. 231.217	Mountain Ave. produced from the E. of W.L. of Fife St.
NO.	REVISIONS	DATE
0	ISSUED FOR TENDER	03/05/2018 BC
A	ISSUED FOR REVIEW	02/02/2018 BC

AECOM	
DESIGNED BY	SS
CHECKED BY	BC/KWR
DRAWN BY	SS/RAM
APPROVED BY	
HOR. SCALE:	1:250
VERTICAL:	1:10
RELEASED FOR CONSTRUCTION BY:	
DATE	

ENGINEER'S SEAL
PROVINCE OF MANITOBA
K.W. RAE
REGISTERED PROFESSIONAL ENGINEER

THE CITY OF WINNIPEG
PUBLIC WORKS DEPARTMENT
ENGINEERING DIVISION

2018/2019 INDUSTRIAL STREET RENEWAL PROGRAM

FIFE STREET - COLLEGE AVENUE TO INKSTER BOULEVARD
CONCRETE PAVEMENT RECONSTRUCTION
STATION 0+880 TO STATION 1+010

CITY DRAWING NUMBER
SHEET 19 OF 47

CONSULTANT DRAWING NO. CT-19