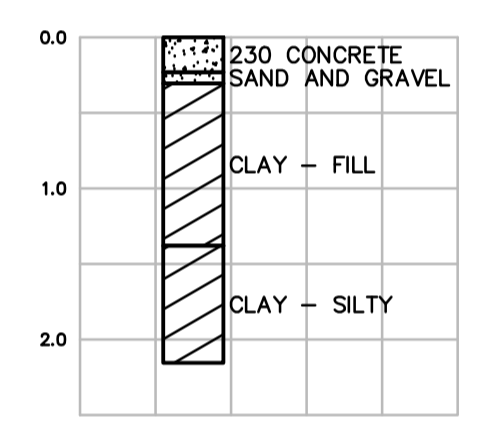


TYPICAL CROSS SECTION



TESTHOLE TP17-13 LOG

REFERENCE NOTES

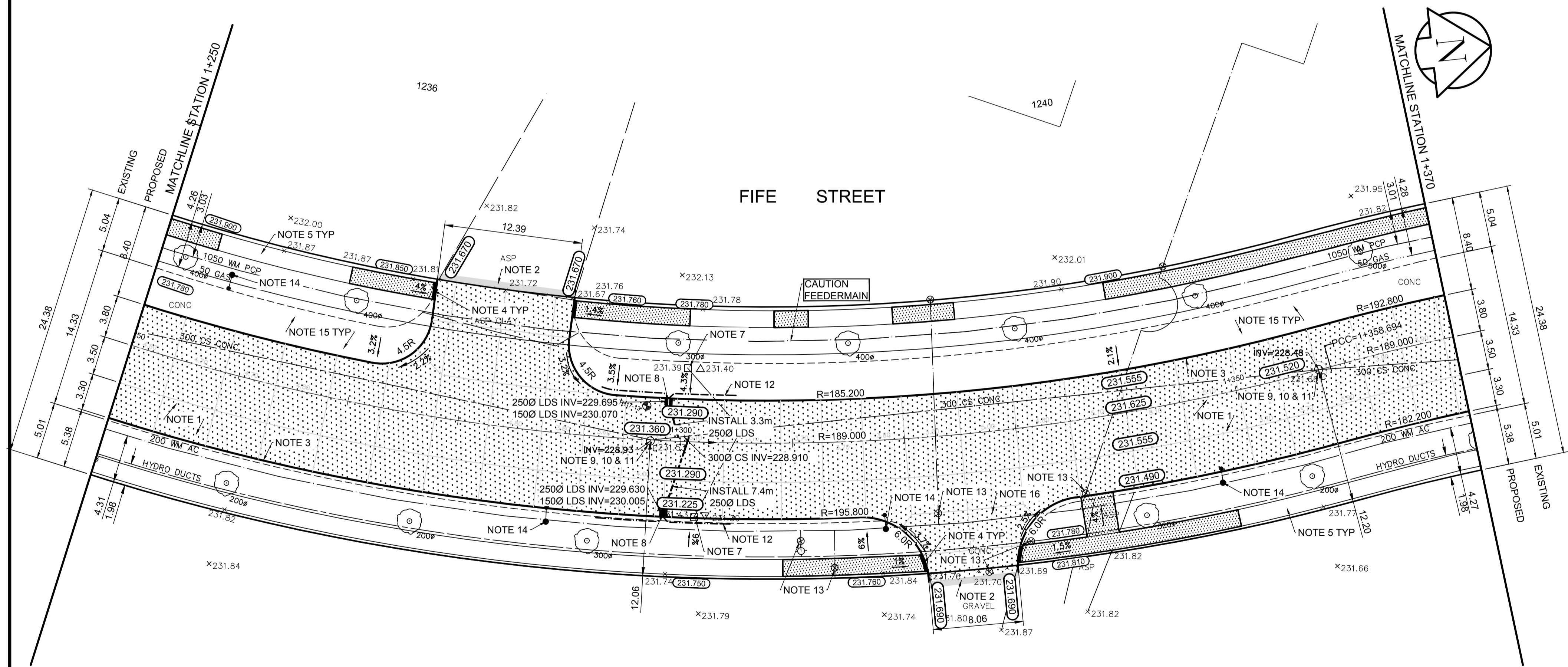
- A. PAVEMENT DIMENSIONS ARE TO BACK OF CURB
- B. BASELINE IS CENTRE LINE RIGHT-OF-WAY
- C. PROPERTY LINES OBTAINED FROM CITY OF WINNIPEG L.B.I.S., AND NO SCALE FACTOR WAS APPLIED
- D. REFER TO AECOM FIELD BOOK NO. 4993

CONSTRUCTION NOTES

1. REMOVE EXISTING CONCRETE PAVEMENT AND CONSTRUCT NEW 230mm PLAIN DOWELLED CONCRETE PAVEMENT
2. REMOVE EXISTING ASPHALT CONCRETE PAVEMENT AND CONSTRUCT NEW ASPHALTIC PAVEMENT TYPE 1A (75mm)
3. CONSTRUCT NEW MODIFIED BARRIER CURB (180mm HT. INTEGRAL)
4. CONSTRUCT NEW CURB RAMP (10mm HT. INTEGRAL)
5. RENEW EXISTING ASPHALT CONCRETE SIDEWALK AND CONSTRUCT NEW ASPHALTIC PAVEMENT TYPE 1A (75mm)
6. INSTALL NEW DETECTABLE WARNING SURFACE TILE
7. REMOVE EXISTING CATCHBASIN AND CATCHPIT AND PLUG EXISTING LEAD
8. INSTALL NEW CURB AND GUTTER INLET c/w CATCH BASIN (SD-24) AND CONNECT NEW 250mm LEAD TO EXISTING 300mm COMBINED SEWER
9. REMOVE EXISTING FRAME AND COVER AND PLACE NEW FRAME AND SOLID COVER (AP-004/AP-005)
10. ADJUST EXISTING MANHOLE TO GRADE
11. INSTALL NEW CAST IRON RING
12. INSTALL 150mm SUBDRAIN 6.0m ON EACH SIDE OF CATCHBASIN
13. ADJUST EXISTING WATER VALVE TO GRADE
14. REMOVE EXISTING LIGHT STANDARD (BY OTHERS)
15. REMOVE EXISTING CONCRETE PAVEMENT AND PLACE AND COMPACT SUITABLE SITE MATERIAL
16. REMOVE EXISTING CONCRETE PAVEMENT AND CONSTRUCT NEW 200mm REINFORCED CONCRETE PAVEMENT

AECOM
 Certificate of Authorization
 AECOM Canada Ltd.
 No. 4671 Date: _____

METRIC
 WHOLE NUMBERS INDICATE MILLIMETRES
 DECIMALIZED NUMBERS INDICATE METRES



150 mm W.M.	WATERMAIN	150 mm W.M.	HYDRO	— x —	Q PROFILE
Hydrant	HYDRANT	Hydrant	M.T.S.	— □ —	WEST GUTTER
Valve	VALVE	Valve	CONCRETE	— ○ —	EAST GUTTER
300mm L.D.S.	LAND DRAINAGE SEWER	300mm L.D.S.	ASPHALT	— ◇ —	N/W PROPERTY LINE
250mm W.W.S.	WASTEWATER SEWER	250mm W.W.S.	PROPERTY LINE	— ○ —	S/E PROPERTY LINE
Manhole	MANHOLE	Manhole	SURVEY BAR		
Catch Basin	CATCH BASIN	Catch Basin	ELEVATION (235.750)		
Catch Pit	CATCH PIT	Catch Pit	TREE		
Junctions	JUNCTIONS	Junctions	SIDEWALK RAMP		
Culvert	CULVERT	Culvert	CONCRETE SIDEWALK		
Gas	GAS	Gas	FENCE		
EXISTING	LEGEND - PLAN	PROPOSED	EXISTING	LEGEND - PROFILE	PROPOSED

LOCATION APPROVED UNDERGROUND STRUCTURES

SUPV. U/G STRUCTURES COMMITTEE DATE

NOTE:
 LOCATION OF UNDERGROUND STRUCTURES AS SHOWN ARE BASED ON THE BEST INFORMATION AVAILABLE. BUT NO GUARANTEE IS GIVEN THAT ALL EXISTING UTILITIES ARE SHOWN OR THAT THE GIVEN LOCATIONS ARE EXACT. CONFIRMATION OF EXISTENCE AND EXACT LOCATION OF ALL SERVICES MUST BE OBTAINED FROM THE INDIVIDUAL UTILITIES BEFORE PROCEEDING WITH CONSTRUCTION.

B.M.	24-025	N.W. Cor. Mountain Ave. & Fife St. Tbl. in 12m
Conc. File beneath Valve Box	1.9m S. of N. L. of	ELEV. 231.217
Mountain Ave.	produced from the E. of W.L. of File St.	

AECOM

DESIGNED BY	SS	CHECKED BY	BC/KWR
DRAWN BY	SS/RAM	APPROVED BY	
HOR. SCALE:	1:250	RELEASED FOR CONSTRUCTION BY:	
VERTICAL:	1:10	DATE	

ENGINEER'S SEAL

PROVINCE OF MANITOBA

K.W. RAE

REGISTERED PROFESSIONAL ENGINEER

THE CITY OF WINNIPEG
 PUBLIC WORKS DEPARTMENT
 ENGINEERING DIVISION

2018/2019 INDUSTRIAL STREET RENEWAL PROGRAM

FIFE STREET - COLLEGE AVENUE TO INKSTER BOULEVARD
 CONCRETE PAVEMENT RECONSTRUCTION
 STATION 1+250 TO STATION 1+370

CITY DRAWING NUMBER
 SHEET 22 OF 47

CONSULTANT DRAWING NO.
 CT-22