

'A' ACCESS PAD CROSS SECTION  
NOT TO SCALE

REFERENCE NOTES

- A. PAVEMENT DIMENSIONS ARE TO BACK OF CURB
- B. BASELINE IS CENTRE LINE RIGHT-OF-WAY
- C. PROPERTY LINES OBTAINED FROM CITY OF WINNIPEG L.B.I.S., AND NO SCALE FACTOR WAS APPLIED
- D. REFER TO AECOM FIELD BOOK NO. 4994

CONSTRUCTION NOTES

1. REMOVE EXISTING CONCRETE PAVEMENT AND CONSTRUCT NEW 200mm REINFORCED CONCRETE PAVEMENT c/w NEW ASPHALTIC OVERLAY
2. PLACE NEW ASPHALTIC PAVEMENT TYPE III (75mm) AND TYPE 1A (50mm)
3. RENEW EXISTING CONCRETE BARRIER CURB (150mm REVEAL HT. DOWELLED)
4. CONSTRUCT NEW CONCRETE BARRIER CURB (150mm REVEAL HT. SEPARATE)
5. CONSTRUCT NEW CONCRETE BARRIER CURB (150mm REVEAL HT. DOWELLED)
6. CONSTRUCT NEW BARRIER CURB AND GUTTER (600mm WIDTH, 180mm HT.)
7. REMOVE EXISTING 450 Ø CORRUGATED STEEL CULVERT
8. REMOVE EXISTING CONCRETE/ASPHALTIC PAVEMENT
9. ADJUST EXISTING WATER VALVE TO GRADE
10. REMOVE EXISTING CONCRETE BARRIER CURB AND CONSTRUCT NEW CONCRETE MODIFIED BARRIER CURB (150mm REVEAL HT. DOWELLED)
11. CONSTRUCT NEW CONCRETE MODIFIED BARRIER CURB (150mm REVEAL HT. INTEGRAL)
12. CONSTRUCT NEW MONOLITHIC CONCRETE SPLASH STRIP (150mm REVEAL HT. DOWELLED)
13. CONSTRUCT NEW MONOLITHIC CONCRETE BULL NOSE
14. ADJUST EXISTING TRAFFIC SIGNAL BOX
15. REMOVE EXISTING CONCRETE SIGN BASE
16. RELOCATE EXISTING TRAFFIC SIGNAL POLE (by others)
17. REGRADE EXISTING DITCH

BASELINE UTM COORDINATES			
POINT I.D.	DESCRIPTION	NORTHING	EASTING
C01	BC: 0+110.714	5529119.024	623746.460
C02	BC/EC: 0+120.263	5529118.220	623756.185
C03	EC/BT: 0+182.126	5529127.461	623817.374
C04	BC: 0+114.384	5529108.341	623751.499
C05	ER: 0+130.428	5529113.712	623767.104
C06	EC/BC: 0+138.355	5529114.907	623774.835
C07	EC/BT: 0+171.241	5529120.471	623807.280
C08	EC/BT: 0+111.237	5529121.976	623746.617
C09	1.5m BULLNOSE RAD	5529120.487	623746.799
C10	BC: 0+145.787	5529126.177	623780.911
C11	EC/BT: 0+159.720	5529128.561	623794.653
C12	ET/BC: 0+175.828	5529132.118	623810.442
C13	EC/BT: 0+189.761	5529134.502	623824.185



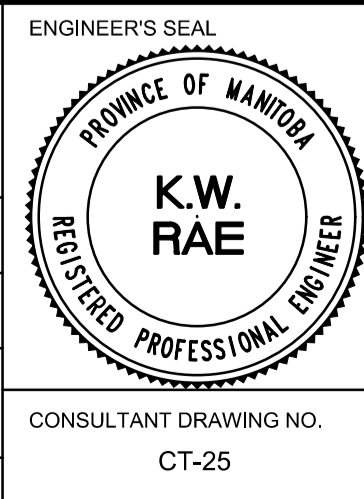
METRIC  
WHOLE NUMBERS INDICATE MILLIMETRES  
DECIMALIZED NUMBERS INDICATE METRES

EXISTING	LEGEND - PLAN	PROPOSED	EXISTING	LEGEND - PLAN	PROPOSED	EXISTING	LEGEND - PROFILE	PROPOSED
150 mm W.M.	WATERMAIN	150 mm W.M.	CONC	HYDRO	CONC	— x —	Q PROFILE	— x —
Hydrant Symbol	HYDRANT	Hydrant Symbol	ASP	M.T.S.	ASP	— □ —	NORTH GUTTER	— □ —
Valve Symbol	VALVE	Valve Symbol	CONC	CONCRETE	CONC	— ○ —	SOUTH GUTTER	— ○ —
300mm L.D.S.	LAND DRAINAGE SEWER	300mm L.D.S.	ASP	ASPHALT	ASP	— ◇ —	N/W PROPERTY LINE	— ◇ —
250mm W.W.S.	WASTEWATER SEWER	250mm W.W.S.	CONC	PROPERTY LINE	CONC	— ○ —	S/E PROPERTY LINE	— ○ —
Manhole Symbol	MANHOLE	Manhole Symbol	ASP	SURVEY BAR	ASP	— □ —		— □ —
Catch Basin Symbol	CATCH BASIN	Catch Basin Symbol	CONC	ELEVATION	CONC	— □ —		— □ —
Catch Pit Symbol	CATCH PIT	Catch Pit Symbol	CONC	TREE	CONC	— □ —		— □ —
Junctions Symbol	JUNCTIONS	Junctions Symbol	CONC	SIDEWALK RAMP	CONC	— □ —		— □ —
Culvert Symbol	CULVERT	Culvert Symbol	CONC	CONCRETE SIDEWALK	CONC	— □ —		— □ —
Gas Symbol	GAS	Gas Symbol	CONC	FENCE	CONC	— □ —		— □ —

LOCATION APPROVED UNDERGROUND STRUCTURES  
SUPV. U/G STRUCTURES COMMITTEE DATE  
NOTE: LOCATION OF UNDERGROUND STRUCTURES AS SHOWN ARE BASED ON THE BEST INFORMATION AVAILABLE. BUT NO GUARANTEE IS GIVEN THAT ALL EXISTING UTILITIES ARE SHOWN OR THAT THE GIVEN LOCATIONS ARE EXACT. CONFIRMATION OF EXISTENCE AND EXACT LOCATION OF ALL SERVICES MUST BE OBTAINED FROM THE INDIVIDUAL UTILITIES BEFORE PROCEEDING WITH CONSTRUCTION.

NO.	REVISIONS	DATE	BY	DATE
0	ISSUED FOR TENDER	03/05/2018	BC	
A	ISSUED FOR REVIEW	02/02/2018	BC	

DESIGNED BY	SS	CHECKED BY	BC/KWR
DRAWN BY	SS	APPROVED BY	
HOR. SCALE:	1:250	RELEASED FOR CONSTRUCTION BY:	
VERTICAL:	1:10	DATE	



THE CITY OF WINNIPEG  
PUBLIC WORKS DEPARTMENT  
ENGINEERING DIVISION

2018/2019 INDUSTRIAL STREET RENEWAL PROGRAM

SASKATCHEWAN AVENUE - STURGEON RD TO MORAY ST  
PAVEMENT REHABILITATION  
STURGEON ROAD TO STATION 0+220

CITY DRAWING NUMBER  
SHEET 25 OF 47

CONSULTANT DRAWING NO. CT-25