

'A' ACCESS PAD CROSS SECTION
NOT TO SCALE

- REFERENCE NOTES**
- A. PAVEMENT DIMENSIONS ARE TO BACK OF CURB
 - B. BASELINE IS CENTRE LINE RIGHT-OF-WAY
 - C. PROPERTY LINES OBTAINED FROM CITY OF WINNIPEG L.B.I.S., AND NO SCALE FACTOR WAS APPLIED
 - D. REFER TO AECOM FIELD BOOK NO. 4994

- CONSTRUCTION NOTES**
1. REMOVE EXISTING CONCRETE PAVEMENT AND CONSTRUCT NEW 200mm REINFORCED CONCRETE PAVEMENT OR NEW ASPHALTIC OVERLAY
 2. PLACE NEW ASPHALTIC PAVEMENT TYPE III (75mm) TYPE 1A (50mm)
 3. PARTIAL DEPTH PLANING OF EXISTING JOINTS AND ASPHALT PATCHING OF EXISTING JOINTS USING TYPE 1A
 4. RENEW EXISTING CONCRETE BARRIER CURB (150mm REVEAL HT. DOWELLED)
 5. INSTALL NEW CONCRETE BARRIER CURB (150mm REVEAL HT. DOWELLED)
 6. INSTALL NEW CONCRETE BARRIER CURB (150mm REVEAL HT. SEPARATE)
 7. REMOVE EXISTING CONCRETE/ASPHALTIC PAVEMENT
 8. REGRADE EXISTING DITCH



METRIC
WHOLE NUMBERS INDICATE MILLIMETRES
DECIMALIZED NUMBERS INDICATE METRES

150 mm W.M.	WATERMAIN	150 mm W.M.	HYDRO	— x —	Q PROFILE
Hydrant	HYDRANT	M.T.S.	M.T.S.	— x —	NORTH GUTTER
Valve	VALVE	CONCRETE	CONCRETE	— x —	SOUTH GUTTER
300mm L.D.S.	LAND DRAINAGE SEWER	ASPHALT	ASPHALT	— x —	N/W PROPERTY LINE
250mm W.W.S.	WASTEWATER SEWER	PROPERTY LINE	PROPERTY LINE	— x —	S/E PROPERTY LINE
Manhole	MANHOLE	SURVEY BAR	SURVEY BAR	— x —	
Catch Basin	CATCH BASIN	ELEVATION (235.750)	ELEVATION	— x —	
Catch Pit	CATCH PIT	TREE	TREE	— x —	
Junctions	JUNCTIONS	SIDEWALK RAMP	SIDEWALK RAMP	— x —	
Culvert	CULVERT	CONCRETE SIDEWALK	CONCRETE SIDEWALK	— x —	
Gas	GAS	FENCE	FENCE	— x —	
EXISTING	LEGEND - PLAN	PROPOSED	EXISTING	LEGEND - PROFILE	PROPOSED

LOCATION APPROVED UNDERGROUND STRUCTURES

SUPV. U/G STRUCTURES COMMITTEE DATE

NOTE:
LOCATION OF UNDERGROUND STRUCTURES AS SHOWN ARE BASED ON THE BEST INFORMATION AVAILABLE. BUT NO GUARANTEE IS GIVEN THAT ALL EXISTING UTILITIES ARE SHOWN OR THAT THE GIVEN LOCATIONS ARE EXACT. CONFIRMATION OF EXISTENCE AND EXACT LOCATION OF ALL SERVICES MUST BE OBTAINED FROM THE INDIVIDUAL UTILITIES BEFORE PROCEEDING WITH CONSTRUCTION.

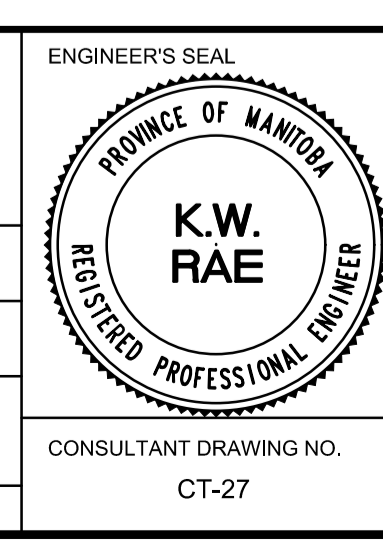
B.M. 39-052 N. side of Saskatchewan Ave., @ Moray St., 100' on top of 0.05m dia. x 2.4m iron pipe, 3.5m S. of chain ELEV. 238.647

Link fence on N. side of Saskatchewan Ave. & on C.L. of Conc. Part of Moray St. produced from the S. N 552978.150 E 624908.230

NO.	REVISIONS	DATE	BY
0	ISSUED FOR TENDER	03/05/2018	BC
A	ISSUED FOR REVIEW	02/02/2018	BC

AECOM

DESIGNED BY	SS	CHECKED BY	BC/KWR
DRAWN BY	SS	APPROVED BY	
HOR. SCALE:	1:250	RELEASED FOR CONSTRUCTION BY:	
VERTICAL:	1:10	DATE	



THE CITY OF WINNIPEG
PUBLIC WORKS DEPARTMENT
ENGINEERING DIVISION

2018/2019 INDUSTRIAL STREET RENEWAL PROGRAM

SASKATCHEWAN AVENUE - STURGEON RD TO MORAY ST
PAVEMENT REHABILITATION
STATION 0+350 TO STATION 0+480

CITY DRAWING NUMBER
SHEET 27 OF 47

CONSULTANT DRAWING NO. CT-27