

'A' ACCESS PAD CROSS SECTION  
NOT TO SCALE

- REFERENCE NOTES**
- A. PAVEMENT DIMENSIONS ARE TO BACK OF CURB
  - B. BASELINE IS CENTRE LINE RIGHT-OF-WAY
  - C. PROPERTY LINES OBTAINED FROM CITY OF WINNIPEG L.B.I.S., AND NO SCALE FACTOR WAS APPLIED
  - D. REFER TO AECOM FIELD BOOK NO. 4994

- CONSTRUCTION NOTES**
1. REMOVE EXISTING CONCRETE PAVEMENT AND CONSTRUCT NEW 200mm REINFORCED CONCRETE PAVEMENT c/w NEW ASPHALTIC OVERLAY
  2. REMOVE EXISTING CONCRETE PAVEMENT AND CONSTRUCT NEW 200mm REINFORCED CONCRETE PAVEMENT
  3. PLACE NEW ASPHALTIC PAVEMENT TYPE III (75mm) TYPE 1A (50mm)
  4. PARTIAL DEPTH PLANING OF EXISTING JOINTS AND ASPHALT PATCHING OF EXISTING JOINTS USING TYPE 1A
  5. INSTALL NEW CURB AND GUTTER INLET c/w CATCH PIT (SD-023) AND CONNECT TO EXISTING CATCHBASIN
  6. RENEW EXISTING CONCRETE BARRIER CURB (150mm REVEAL HT. DOWELLED)
  7. CONSTRUCT NEW CONCRETE BARRIER CURB (150mm REVEAL HT. SEPERATE)
  8. CONSTRUCT NEW CONCRETE MODIFIED BARRIER CURB (150mm REVEAL HT. INTEGRAL)
  9. REMOVE EXISTING CATCHPIT AND ABANDON LEAD
  10. ADJUST EXISTING MANHOLE/CATCHBASIN TO GRADE
  11. CONSTRUCT NEW CONCRETE MODIFIED BARRIER CURB (150mm REVEAL HT. DOWELLED)
  12. RENEW EXISTING MONOLITHIC CONCRETE BULL NOSE



**METRIC**  
WHOLE NUMBERS INDICATE MILLIMETRES  
DECIMALIZED NUMBERS INDICATE METRES

150 mm W.M.	WATERMAIN	150 mm W.M.	HYDRO	— x —	Q PROFILE
Hydrant	HYDRANT	Manhole	M.T.S.	—	NORTH GUTTER
Valve	VALVE	Catch Basin	CONCRETE	—	SOUTH GUTTER
300mm L.D.S.	LAND DRAINAGE SEWER	Catch Pit	ASPHALT	—	N/W PROPERTY LINE
250mm W.W.S.	WASTEWATER SEWER	Junctions	PROPERTY LINE	—	S/E PROPERTY LINE
Manhole	MANHOLE	Culvert	SURVEY BAR	—	
Catch Basin	CATCH BASIN	Gas	ELEVATION (235.750)	—	
Catch Pit	CATCH PIT	Existing	TREE	—	
Junctions	JUNCTIONS	Proposed	SIDEWALK RAMP	—	
Culvert	CULVERT	Existing	CONCRETE SIDEWALK	—	
Gas	GAS	Proposed	FENCE	—	
Existing	LEGEND - PLAN	Proposed	LEGEND - PLAN	Proposed	LEGEND - PROFILE
Existing	LEGEND - PLAN	Proposed	LEGEND - PROFILE	Proposed	LEGEND - PROFILE

**LOCATION APPROVED UNDERGROUND STRUCTURES**

SUPV. U/G STRUCTURES COMMITTEE DATE

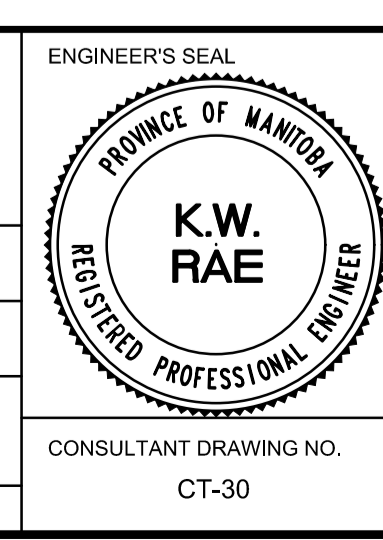
**NOTE:**  
LOCATION OF UNDERGROUND STRUCTURES AS SHOWN ARE BASED ON THE BEST INFORMATION AVAILABLE. BUT NO GUARANTEE IS GIVEN THAT ALL EXISTING UTILITIES ARE SHOWN OR THAT THE GIVEN LOCATIONS ARE EXACT. CONFIRMATION OF EXISTENCE AND EXACT LOCATION OF ALL SERVICES MUST BE OBTAINED FROM THE INDIVIDUAL UTILITIES BEFORE PROCEEDING WITH CONSTRUCTION.

B.M. 39-052 N. side of Saskatchewan Ave. @ Moray St. 100' on top of 0.05m dia. x 2.4m iron pipe, 3.5m S. of chain link fence on N. side of Saskatchewan Ave. & on C.L. of Conc. Part of Moray St. produced from the S. N 552978.150 E 624908.230

NO.	REVISIONS	DATE	BY
0	ISSUED FOR TENDER	03/05/2018	BC
A	ISSUED FOR REVIEW	02/02/2018	BC

**AECOM**

DESIGNED BY	SS	CHECKED BY	BC/KWR
DRAWN BY	SS	APPROVED BY	
HOR. SCALE:	1:250	RELEASED FOR CONSTRUCTION BY:	
VERTICAL:	1:10	DATE	



**THE CITY OF WINNIPEG**  
PUBLIC WORKS DEPARTMENT  
ENGINEERING DIVISION

2018/2019 INDUSTRIAL STREET RENEWAL PROGRAM

SASKATCHEWAN AVENUE - STURGEON RD TO MORAY ST  
PAVEMENT REHABILITATION  
STATION 0+740 TO STATION 0+870

CITY DRAWING NUMBER  
SHEET 30 OF 47

CONSULTANT DRAWING NO. CT-30