

'A' ACCESS PAD CROSS SECTION
NOT TO SCALE

- REFERENCE NOTES**
- PAVEMENT DIMENSIONS ARE TO BACK OF CURB
 - BASELINE IS CENTRE LINE RIGHT-OF-WAY
 - PROPERTY LINES OBTAINED FROM CITY OF WINNIPEG L.B.I.S., AND NO SCALE FACTOR WAS APPLIED
 - REFER TO AECOM FIELD BOOK NO. 4994

- CONSTRUCTION NOTES**
- REMOVE EXISTING CONCRETE PAVEMENT AND CONSTRUCT NEW 200mm REINFORCED CONCRETE PAVEMENT c/w NEW ASPHALTIC OVERLAY
 - CONSTRUCT NEW 200mm REINFORCED CONCRETE PAVEMENT c/w NEW ASPHALTIC PAVEMENT
 - PLACE NEW ASPHALTIC PAVEMENT TYPE III (75mm) TYPE 1A (50mm)
 - INSTALL NEW CURB AND GUTTER INLET c/w CATCHPIT (SD-023) AND CONNECT TO EXISTING CATCHBASIN
 - RENEW EXISTING CONCRETE BARRIER CURB (150mm REVEAL HT. DOWELLED)
 - CONSTRUCT NEW CONCRETE BARRIER CURB (150mm REVEAL HT. SEPERATE)
 - ADJUST EXISTING MANHOLE/CATCHBASIN TO GRADE
 - INSTALL NEW CAST IRON RISER RING
 - REMOVE EXISTING CATCHPIT AND ABANDON LEAD
 - REMOVE EXISTING CONCRETE/ASPHALTIC PAVEMENT
 - REMOVE EXISTING FRAME AND COVER AND INSTALL NEW FRAME AND SOLID COVER (AP-006 & AP-007)
 - CONSTRUCT NEW MONOLITHIC CONCRETE SPLASH STRIP (150mm REVEAL HT. DOWELLED)

BASELINE UTM COORDINATES			
POINT ID.	DESCRIPTION	NORTHING	EASTING
C27	ET/BC: 1+160.965	5529246.388	624788.965
C28	EC/BT: 1+208.717	5529251.154	624835.824
C29	ET/BC: 1+157.856	5529251.373	624788.577
C30	EC/BT: 1+204.755	5529255.662	624831.598



METRIC
WHOLE NUMBERS INDICATE MILLIMETRES
DECIMALIZED NUMBERS INDICATE METRES

EXISTING	LEGEND - PLAN	PROPOSED	EXISTING	LEGEND - PLAN	PROPOSED	EXISTING	LEGEND - PROFILE	PROPOSED
150 mm W.M.	WATERMAIN	130 mm W.M.	HYDRO	— x —	Q PROFILE	— x —	NORTH GUTTER	— x —
300mm L.D.S.	LAND DRAINAGE SEWER	300mm L.D.S.	CONCRETE	— x —	ASPHALT	— x —	SOUTH GUTTER	— x —
250mm W.W.S.	WASTEWATER SEWER	250mm W.W.S.	PROPERTY LINE	— x —	SURVEY BAR	— x —	N/W PROPERTY LINE	— x —
○	MANHOLE	●	ELEVATION	(235.750)	TREE	— x —	S/E PROPERTY LINE	— x —
□	CATCH BASIN	■	SIDEWALK RAMP	— x —	CONCRETE SIDEWALK	— x —		
▽	CATCH PIT	▼	FENCE	— x —				
— x —	JUNCTIONS	— x —						
— x —	CULVERT	— x —						
— x —	GAS	— x —						

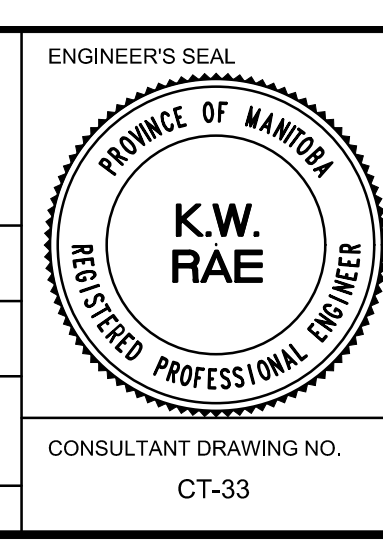
LOCATION APPROVED UNDERGROUND STRUCTURES

SUPV. U/G STRUCTURES COMMITTEE DATE

NOTE:
LOCATION OF UNDERGROUND STRUCTURES AS SHOWN ARE BASED ON THE BEST INFORMATION AVAILABLE. BUT NO GUARANTEE IS GIVEN THAT ALL EXISTING UTILITIES ARE SHOWN OR THAT THE GIVEN LOCATIONS ARE EXACT. CONFIRMATION OF EXISTENCE AND EXACT LOCATION OF ALL SERVICES MUST BE OBTAINED FROM THE INDIVIDUAL UTILITIES BEFORE PROCEEDING WITH CONSTRUCTION.

NO.	REVISIONS	DATE	BY
0	ISSUED FOR TENDER	03/05/2018	BC
A	ISSUED FOR REVIEW	02/02/2018	BC

AECOM	DESIGNED BY: SS	CHECKED BY: BC/KWR
	DRAWN BY: SS	APPROVED BY:
	HOR. SCALE: 1:250	RELEASED FOR CONSTRUCTION BY:
	VERTICAL: 1:10	DATE:



THE CITY OF WINNIPEG
PUBLIC WORKS DEPARTMENT
ENGINEERING DIVISION

2018/2019 INDUSTRIAL STREET RENEWAL PROGRAM

SASKATCHEWAN AVENUE - STURGEON RD TO MORAY ST
PAVEMENT REHABILITATION
STATION 1+130 TO STATION 1+250

CITY DRAWING NUMBER: SHEET 33 OF 47

CONSULTANT DRAWING NO. CT-33