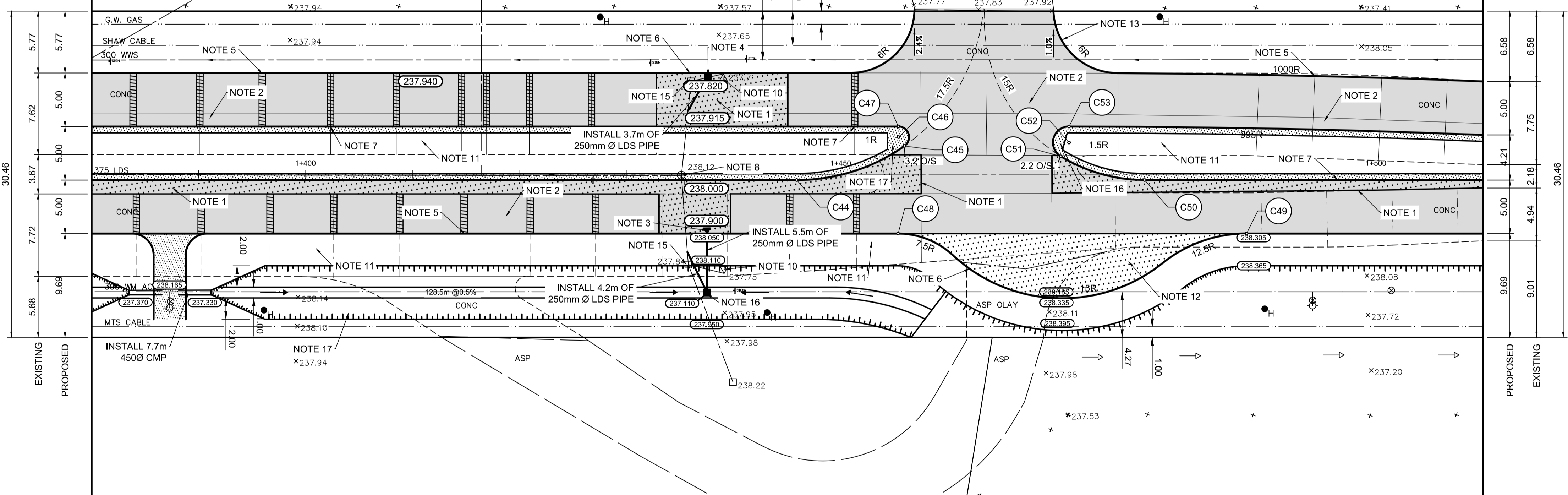
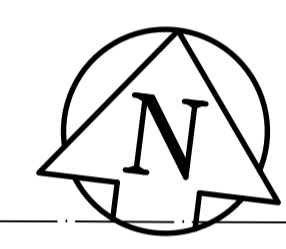


BASELINE UTM COORDINATES			
POINT I.D.	DESCRIPTION	NORTHING	EASTING
C44	ET/BC: 1+445.887	5529285.722	625070.995
C45	EC/BC: 1+455.949	5529290.133	625080.582
C46	1.0m BULLNOSE RAD	5529290.883	625079.931
C47	ET/EC: 1+455.374	5529291.865	625079.785
C48	ET/BC: 1+455.350	5529281.940	625081.007
C49	ER/BT: 1+487.906	5529285.996	625113.308
C50	EC/BT: 1+478.387	5529289.771	625103.241
C51	ET/BC: 1+445.887	5529290.997	625095.170
C52	1.5m BULLNOSE RAD	5529292.363	625095.790
C53	EC/BT: 1+471.318	5529293.851	625095.605

SASKATCHEWAN AVENUE



- REFERENCE NOTES**
- A. PAVEMENT DIMENSIONS ARE TO BACK OF CURB
  - B. BASELINE IS CENTRE LINE RIGHT-OF-WAY
  - C. PROPERTY LINES OBTAINED FROM CITY OF WINNIPEG L.B.I.S., AND NO SCALE FACTOR WAS APPLIED
  - D. REFER TO AECOM FIELD BOOK NO. 4994

- CONSTRUCTION NOTES**
1. REMOVE EXISTING CONCRETE PAVEMENT AND CONSTRUCT NEW 200mm REINFORCED CONCRETE PAVEMENT c/w NEW ASPHALTIC OVERLAY
  2. PLACE NEW ASPHALTIC PAVEMENT TYPE III (75mm) TYPE 1A (50mm)
  3. INSTALL NEW CURB AND GUTTER INLET c/w CATCHPIT (SD-023) AND CONNECT TO NEW CATCHBASIN
  4. INSTALL NEW CURB AND GUTTER INLET c/w CATCHBASIN (SD-024) AND CONNECT TO EXISTING LEAD
  5. RENEW EXISTING CONCRETE BARRIER CURB (150mm REVEAL HT. DOWELLED)
  6. CONSTRUCT NEW CONCRETE BARRIER CURB (150mm REVEAL HT. SEPERATE)
  7. CONSTRUCT NEW MONOLITHIC CONCRETE SPLASH STRIP (150mm REVEAL HT. DOWELLED)
  8. EXISTING MANHOLE/CATCHBASIN TO GRADE
  9. INSTALL NEW CAST IRON RISER RING
  10. REMOVE EXISTING CATCHPIT AND ABANDON LEAD
  11. REMOVE EXISTING CONCRETE/ASPHALTIC PAVEMENT
  12. CONSTRUCT NEW 200mm REINFORCED CONCRETE PAVEMENT
  13. CONSTRUCT NEW CONCRETE MODIFIED BARRIER CURB (150mm REVEAL HT. INTEGRAL)
  14. INSTALL NEW CATCHBASIN (SD-025) AND CONNECT TO EXISTING LEAD
  15. REMOVE EXISTING CATCHBASIN AND ABANDON LEAD
  16. CONSTRUCT NEW MONOLITHIC CONCRETE BULLNOSE
  17. REGRADE EXISTING DITCH



**METRIC**  
WHOLE NUMBERS INDICATE MILLIMETRES  
DECIMALIZED NUMBERS INDICATE METRES

150mm W.M.	WATERMAIN	150mm W.M.	HYDRO	— x —	Q PROFILE
Hydrant	HYDRANT	300mm L.D.S.	M.T.S.	— □ —	NORTH GUTTER
Valve	VALVE	250mm W.W.S.	CONCRETE	— ○ —	SOUTH GUTTER
Land Drainage Sewer	LAND DRAINAGE SEWER	Property Line	ASPHALT	— ◇ —	N/W PROPERTY LINE
Wastewater Sewer	WASTEWATER SEWER	Survey Bar	Property Line	— ○ —	S/E PROPERTY LINE
Manhole	MANHOLE	Elevation (235.750)	Tree	— ○ —	
Catch Basin	CATCH BASIN	Sidewalk Ramp	Concrete Sidewalk	— ▬ —	
Catch Pit	CATCH PIT	Fence	Fence	— ▬ —	
Junctions	JUNCTIONS				
Culvert	CULVERT				
Gas	GAS				
EXISTING	LEGEND - PLAN	PROPOSED	EXISTING	LEGEND - PROFILE	PROPOSED

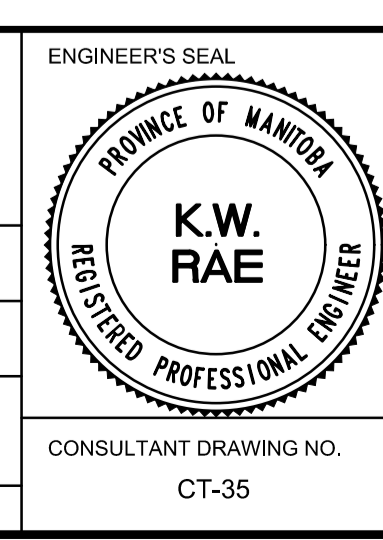
**LOCATION APPROVED UNDERGROUND STRUCTURES**

SUPV. U/G STRUCTURES COMMITTEE DATE

**NOTE:**  
LOCATION OF UNDERGROUND STRUCTURES AS SHOWN ARE BASED ON THE BEST INFORMATION AVAILABLE. BUT NO GUARANTEE IS GIVEN THAT ALL EXISTING UTILITIES ARE SHOWN OR THAT THE GIVEN LOCATIONS ARE EXACT. CONFIRMATION OF EXISTENCE AND EXACT LOCATION OF ALL SERVICES MUST BE OBTAINED FROM THE INDIVIDUAL UTILITIES BEFORE PROCEEDING WITH CONSTRUCTION.

B.M. 39-052	N. side of Saskatchewan Ave. @ Moray St. 100m top of 0.05m dia. x 2.4m iron pipe. 3.5m S. of chain ELEV. 238.647		
B.M. 39-052	link fence on N. side of Saskatchewan Ave. & on C.L. of Conc. Pavt of Moray St. produced from the S. N 552978.150 E 624908.230		
NO.	REVISIONS	DATE	BY
0	ISSUED FOR TENDER	03/05/2018	BC
A	ISSUED FOR REVIEW	02/02/2018	BC

<b>AECOM</b>	
DESIGNED BY	SS
CHECKED BY	BC/KWR
DRAWN BY	SS
APPROVED BY	
HOR. SCALE:	1:250
VERTICAL:	1:10
RELEASED FOR CONSTRUCTION BY:	
CONSULTANT DRAWING NO.	CT-35



**THE CITY OF WINNIPEG**  
PUBLIC WORKS DEPARTMENT  
ENGINEERING DIVISION

2018/2019 INDUSTRIAL STREET RENEWAL PROGRAM

SASKATCHEWAN AVENUE - STURGEON RD TO MORAY ST  
PAVEMENT REHABILITATION  
STATION 1+380 TO STATION 1+510

CITY DRAWING NUMBER  
SHEET 35 OF 47