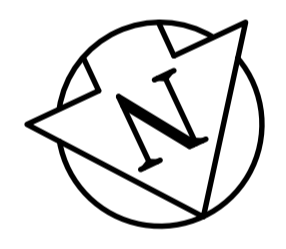


- REFERENCE NOTES**
- A. PAVEMENT DIMENSIONS ARE TO BACK OF CURB
 - B. BASELINE IS CENTRE LINE RIGHT-OF-WAY
 - C. PROPERTY LINES OBTAINED FROM CITY OF WINNIPEG L.B.I.S., AND NO SCALE FACTOR WAS APPLIED
 - D. REFER TO AECOM FIELD BOOK NO. 4994

- CONSTRUCTION NOTES**
1. REMOVE EXISTING ASPHALTIC PAVEMENT AND CONSTRUCT NEW ASPHALTIC PAVEMENT TYPE 1A (100mm)
 2. REMOVE EXISTING CONCRETE PAVEMENT AND CONSTRUCT NEW 200mm REINFORCED CONCRETE PAVEMENT c/w NEW ASPHALTIC OVERLAY
 3. PLACE NEW ASPHALTIC PAVEMENT TYPE 1A (100mm)
 4. ADJUST EXISTING MANHOLE/CATCHBASIN TO GRADE
 5. REMOVE EXISTING FRAME AND COVER AND INSTALL NEW FRAME AND SOLID COVER (AP-006 AND AP-007)
 6. INSTALL NEW CAST IRON RISER RING
 7. INSTALL NEW CURB AND GUTTER INLET c/w CATCHBASIN (SD-024) AND CONNECT TO EXISTING LEAD
 8. INSTALL MEW CURB AND GUTTER INLET c/w CATCHBASIN (SD-024) AND CONNECT TO EXISTING 450mm LDS CONCRETE SEWER
 9. REMOVE EXISTING CATCHBASIN
 10. REMOVE EXISTING CATCHPIT AND ABANDON LEAD
 11. ADJUST EXISTING WATER VALVE TO GRADE
 12. RENEW EXISTING CONCRETE BARRIER CURB (100mm REVEAL HT. DOWELLED)
 13. REMOVE EXISTING CONCRETE BARRIER CURB AND CONSTRUCT NEW BARRIER CURB (100mm REVEAL HT. DOWELLED)
 14. CONSTRUCT NEW 100mm CONCRETE SIDEWALK
 15. CONSTRUCT NEW CURB RAMP (10mm HT. INTEGRAL)
 16. INSTALL NEW DETECTABLE WARNING SURFACE TILE
 17. REMOVE EXISTING ASPHALT PAVEMENT AND CONSTRUCT NEW ASPHALT PAVEMENT TYPE 1A



METRIC
WHOLE NUMBERS INDICATE MILLIMETRES
DECIMALIZED NUMBERS INDICATE METRES

150 mm W.M.	WATERMAIN	150 mm W.M.	HYDRANT	HYDRO	— x —	Q PROFILE	—
300mm L.D.S.	LAND DRAINAGE SEWER	300mm L.D.S.	VALVE	M.T.S.	— □ —	WEST GUTTER	—
250mm W.W.S.	WASTEWATER SEWER	250mm W.W.S.	CATCH BASIN	CONCRETE	— ○ —	EAST GUTTER	—
	MANHOLE		CATCH PIT	ASPHALT	— ◇ —	N/W PROPERTY LINE	—
	JUNCTIONS		JUNCTIONS	PROPERTY LINE	— ○ —	S/E PROPERTY LINE	—
	CULVERT		CULVERT	SURVEY BAR			
	GAS		GAS	ELEVATION	(235.750)		
				TREE			
				SIDEWALK RAMP			
				CONCRETE SIDEWALK			
				FENCE			
EXISTING	LEGEND - PLAN	PROPOSED	EXISTING	LEGEND - PLAN	PROPOSED	EXISTING	LEGEND - PROFILE

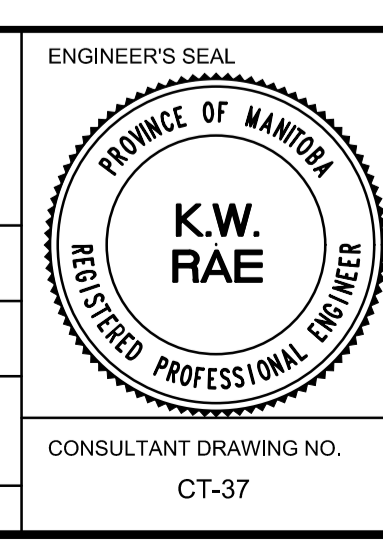
LOCATION APPROVED UNDERGROUND STRUCTURES

SUPV. U/G STRUCTURES COMMITTEE DATE

NOTE:
LOCATION OF UNDERGROUND STRUCTURES AS SHOWN ARE BASED ON THE BEST INFORMATION AVAILABLE. BUT NO GUARANTEE IS GIVEN THAT ALL EXISTING UTILITIES ARE SHOWN OR THAT THE GIVEN LOCATIONS ARE EXACT. CONFIRMATION OF EXISTENCE AND EXACT LOCATION OF ALL SERVICES MUST BE OBTAINED FROM THE INDIVIDUAL UTILITIES BEFORE PROCEEDING WITH CONSTRUCTION.

B.M. 24-028	S.W. Cor. Hutchings St. & Sheppard Ave. 10m in E. Conc. foundation No. 10 Hutchings St. 2m S. & 0.5m below washed stone wall of N.E. Cor. of Bldg.		
ELEV. 232.986			
NO.	REVISIONS	DATE	BY
0	ISSUED FOR TENDER	03/05/2018	BC
A	ISSUED FOR REVIEW	02/02/2018	BC

AECOM		ENGINEER'S SEAL	
DESIGNED BY	SS	CHECKED BY	BC/KWR
DRAWN BY	SS/RAM	APPROVED BY	
HOR. SCALE:	1:250	RELEASED FOR CONSTRUCTION BY:	
VERTICAL:	1:10	DATE	



THE CITY OF WINNIPEG
PUBLIC WORKS DEPARTMENT
ENGINEERING DIVISION

2018/2019 INDUSTRIAL STREET RENEWAL PROGRAM

HUTCHINGS STREET - SHEPPARD STREET TO INKSTER BOULEVARD
PAVEMENT REHABILITATION
SHEPPARD STREET TO STATION 0+210

CITY DRAWING NUMBER
SHEET 37 OF 47

CONSULTANT DRAWING NO. CT-37