

**REFERENCE NOTES**

- A. PAVEMENT DIMENSIONS ARE TO BACK OF CURB
- B. BASELINE IS CENTRE LINE RIGHT-OF-WAY
- C. PROPERTY LINES OBTAINED FROM CITY OF WINNIPEG L.B.I.S., AND NO SCALE FACTOR WAS APPLIED
- D. REFER TO AECOM FIELD BOOK NO. 4994

**CONSTRUCTION NOTES**

1. PLACE NEW ASPHALTIC PAVEMENT TYPE1A (100mm)
2. REMOVE EXISTING CONCRETE PAVEMENT AND CONSTRUCT NEW 200mm REINFORCED CONCRETE PAVEMENT c/w NEW ASPHALTIC OVERLAY
3. ADJUST EXISTING MANHOLE/CATCHBASIN TO GRADE
4. REMOVE EXISTING FRAME AND COVER AND INSTALL NEW FRAME AND SOLID COVER (AP-006 AND AP-007)
5. INSTALL NEW CAST IRON RISER RING
6. INSTALL NEW CURB AND GUTTER INLET c/w CATCHBASIN (SD-024) AND CONNECT TO EXISTING LEAD
7. INSTALL NEW CURB AND GUTTER INLET c/w CATCHBASIN (SD-024) AND CONNECT TO EXISTING 600mm LDS CONCRETE SEWER
8. REMOVE EXISTING CATCHBASIN
9. REMOVE EXISTING CATCHPIT AND ABANDON LEAD
10. ADJUST EXISTING WATER VALVE TO GRADE
11. RENEW EXISTING CONCRETE BARRIER CURB (100mm REVEAL HT. DOWELLED)
12. REMOVE EXISTING CONCRETE BARRIER CURB AND CONSTRUCT NEW BARRIER CURB (100mm REVEAL HT. DOWELLED)
13. CONSTRUCT NEW 100mm CONCRETE SIDEWALK
14. CONSTRUCT NEW CURB RAMP (10mm HT. INTEGRAL)



**METRIC**  
WHOLE NUMBERS INDICATE MILLIMETRES  
DECIMALIZED NUMBERS INDICATE METRES

150mm W.M.	WATERMAIN	150mm W.M.	HYDRANT	HYDRO	— x —	Q PROFILE	—
300mm L.D.S.	LAND DRAINAGE SEWER	300mm L.D.S.	VALVE	M.T.S.	— □ —	WEST GUTTER	—
250mm W.M.S.	WASTEWATER SEWER	250mm W.M.S.	MANHOLE	CONCRETE	— ○ —	EAST GUTTER	—
	CATCH BASIN		CATCH PIT	ASPHALT	— ◇ —	N/W PROPERTY LINE	—
	JUNCTIONS			PROPERTY LINE	— ○ —	S/E PROPERTY LINE	—
	GAS			SURVEY BAR	— □ —		—
EXISTING	LEGEND - PLAN	PROPOSED	EXISTING	ELEVATION	(235.750)		
				TREE			
				SIDEWALK RAMP			
				CONCRETE SIDEWALK			
				FENCE			
				LEGEND - PLAN	PROPOSED	EXISTING	LEGEND - PROFILE
							PROPOSED

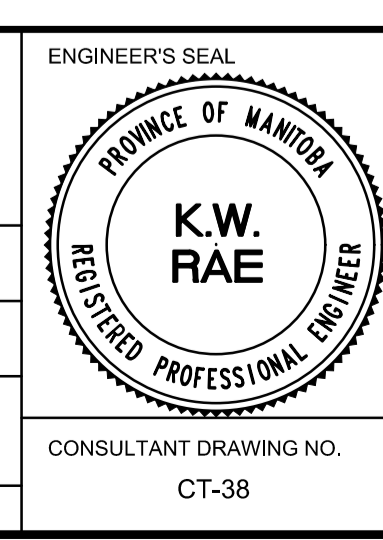
**LOCATION APPROVED UNDERGROUND STRUCTURES**

SUPV. U/G STRUCTURES COMMITTEE DATE

**NOTE:**  
LOCATION OF UNDERGROUND STRUCTURES AS SHOWN ARE BASED ON THE BEST INFORMATION AVAILABLE. BUT NO GUARANTEE IS GIVEN THAT ALL EXISTING UTILITIES ARE SHOWN OR THAT THE GIVEN LOCATIONS ARE EXACT. CONFIRMATION OF EXISTENCE AND EXACT LOCATION OF ALL SERVICES MUST BE OBTAINED FROM THE INDIVIDUAL UTILITIES BEFORE PROCEEDING WITH CONSTRUCTION.

B.M. 24-028	S.W. Cor. Hutchings St. & Sheppard Ave. 10m in E. Conc. foundation No. 10 Hutchings St. 2m S. & 0.5m below washed stone wall of N.E. Cor. of Bldg.		
ELEV. 232.986			
NO.	REVISIONS	DATE	BY
0	ISSUED FOR TENDER	03/05/2018	BC
A	ISSUED FOR REVIEW	02/02/2018	BC

<b>AECOM</b>		DESIGNED BY	SS	CHECKED BY	BC/KWR
		DRAWN BY	SS/RAM	APPROVED BY	
		HOR. SCALE:	1:250	RELEASED FOR CONSTRUCTION BY:	
		VERTICAL:	1:10	DATE	



**THE CITY OF WINNIPEG**  
PUBLIC WORKS DEPARTMENT  
ENGINEERING DIVISION

2018/2019 INDUSTRIAL STREET RENEWAL PROGRAM

HUTCHINGS STREET - SHEPPARD STREET TO INKSTER BOULEVARD  
PAVEMENT REHABILITATION  
STATION 0+210 TO STATION 0+340

CITY DRAWING NUMBER  
SHEET 38 OF 47

CONSULTANT DRAWING NO. CT-38