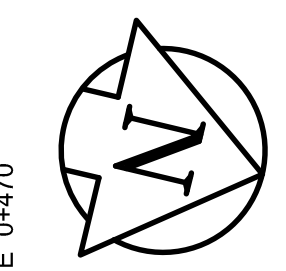


- REFERENCE NOTES**
- A. PAVEMENT DIMENSIONS ARE TO BACK OF CURB
 - B. BASELINE IS CENTRE LINE RIGHT-OF-WAY
 - C. PROPERTY LINES OBTAINED FROM CITY OF WINNIPEG L.B.I.S., AND NO SCALE FACTOR WAS APPLIED
 - D. REFER TO AECOM FIELD BOOK NO. 4994

- CONSTRUCTION NOTES**
1. PLACE NEW ASPHALTIC PAVEMENT TYPE1A (100mm)
 2. REMOVE EXISTING CONCRETE PAVEMENT AND CONSTRUCT NEW 200mm REINFORCED CONCRETE PAVEMENT c/w NEW ASPHALTIC OVERLAY
 3. ADJUST EXISTING MANHOLE/CATCHBASIN TO GRADE
 4. REMOVE EXISTING FRAME AND COVER AND INSTALL NEW FRAME AND SOLID COVER (AP-006 AND AP-007)
 5. INSTALL NEW CAST IRON RISER RING
 6. INSTALL NEW CURB AND GUTTER INLET c/w CATCHBASIN (SD-024) AND CONNECT TO EXISTING LEAD
 7. INSTALL NEW CURB AND GUTTER INLET c/w CATCHBASIN (SD-024) AND CONNECT TO EXISTING 1050mm LDS CONCRETE SEWER
 8. REMOVE EXISTING CATCHBASIN
 9. REMOVE EXISTING CATCHPIT AND ABANDON LEAD
 10. ADJUST EXISTING WATER VALVE TO GRADE
 11. RENEW EXISTING CONCRETE BARRIER CURB (100mm REVEAL HT. DOWELLED)
 12. REMOVE EXISTING CONCRETE BARRIER CURB AND CONSTRUCT NEW BARRIER CURB (100mm REVEAL HT. DOWELLED)
 13. CONSTRUCT NEW 100mm CONCRETE SIDEWALK
 14. CONSTRUCT NEW CURB RAMP (10mm HT. INTEGRAL)
 15. REMOVE EXISTING ASPHALT PAVEMENT AND CONSTRUCT NEW ASPHALT PAVEMENT TYPE 1A
 16. OVERLAY EXISTING CONCRETE PAVEMENT WITH NEW ASPHALT PAVEMENT TYPE 1A



AECOM
 Certificate of Authorization
 AECOM Canada Ltd.
 No. 4671 Date: _____

METRIC
 WHOLE NUMBERS INDICATE MILLIMETRES
 DECIMALIZED NUMBERS INDICATE METRES

150 mm W.M.	WATERMAIN	150 mm W.M.	HYDRO	— x —	Q PROFILE
Hydrant	HYDRANT	M.T.S.	M.T.S.	— □ —	WEST GUTTER
Valve	VALVE	CONCRETE	CONCRETE	— ○ —	EAST GUTTER
300mm L.D.S.	LAND DRAINAGE SEWER	ASPHALT	ASPHALT	— ◇ —	N/W PROPERTY LINE
250mm W.W.S.	WASTEWATER SEWER	PROPERTY LINE	PROPERTY LINE	— ○ —	S/E PROPERTY LINE
Manhole	MANHOLE	SURVEY BAR	SURVEY BAR		
Catch Basin	CATCH BASIN	ELEVATION	ELEVATION		
Catch Pit	CATCH PIT	TREE	TREE		
Junctions	JUNCTIONS	SIDEWALK RAMP	SIDEWALK RAMP		
Culvert	CULVERT	CONCRETE SIDEWALK	CONCRETE SIDEWALK		
Gas	GAS	FENCE	FENCE		
EXISTING	LEGEND - PLAN	PROPOSED	LEGEND - PLAN	PROPOSED	EXISTING
			LEGEND - PROFILE	PROPOSED	

LOCATION APPROVED UNDERGROUND STRUCTURES

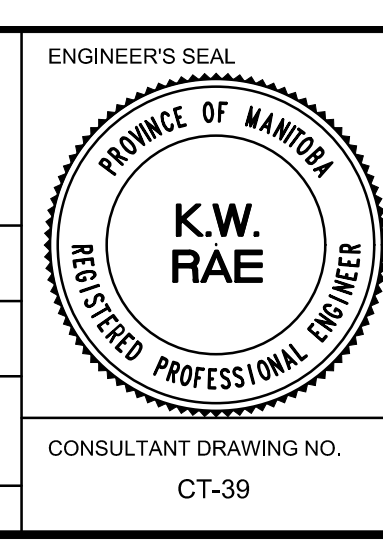
SUPV. U/G STRUCTURES COMMITTEE DATE

NOTE:
 LOCATION OF UNDERGROUND STRUCTURES AS SHOWN ARE BASED ON THE BEST INFORMATION AVAILABLE. BUT NO GUARANTEE IS GIVEN THAT ALL EXISTING UTILITIES ARE SHOWN OR THAT THE GIVEN LOCATIONS ARE EXACT. CONFIRMATION OF EXISTENCE AND EXACT LOCATION OF ALL SERVICES MUST BE OBTAINED FROM THE INDIVIDUAL UTILITIES BEFORE PROCEEDING WITH CONSTRUCTION.

B.M. 24-028	S.W. Cor. Hutchings St. & Sheppard Ave. 10ft in E. Conc. foundation No. 10 Hutchings St. 2m S. & 0.5m below washed stone wall of N.E. Cor. of Bldg.		
ELEV. 232.986			
NO.	REVISIONS	DATE	BY
0	ISSUED FOR TENDER	03/05/2018	BC
A	ISSUED FOR REVIEW	02/02/2018	BC

AECOM

DESIGNED BY	SS	CHECKED BY	BC/KWR
DRAWN BY	SS/RAM	APPROVED BY	
HOR. SCALE:	1:250	RELEASED FOR CONSTRUCTION BY:	
VERTICAL:	1:10	DATE	



THE CITY OF WINNIPEG
 PUBLIC WORKS DEPARTMENT
 ENGINEERING DIVISION

2018/2019 INDUSTRIAL STREET RENEWAL PROGRAM

HUTCHINGS STREET - SHEPPARD STREET TO INKSTER BOULEVARD
 PAVEMENT REHABILITATION
 STATION 0+340 TO STATION 0+470

CITY DRAWING NUMBER
 SHEET 39 OF 47

CONSULTANT DRAWING NO. CT-39