

- REFERENCE NOTES**
- A. PAVEMENT DIMENSIONS ARE TO BACK OF CURB
 - B. BASELINE IS CENTRE LINE RIGHT-OF-WAY
 - C. PROPERTY LINES OBTAINED FROM CITY OF WINNIPEG L.B.I.S., AND NO SCALE FACTOR WAS APPLIED
 - D. REFER TO AECOM FIELD BOOK NO. 4994

- CONSTRUCTION NOTES**
1. REMOVE EXISTING ASPHALTIC PAVEMENT AND CONSTRUCT NEW ASPHALTIC PAVEMENT TYPE 1A (100mm)
 2. REMOVE EXISTING CONCRETE PAVEMENT AND CONSTRUCT NEW 200mm REINFORCED CONCRETE PAVEMENT c/w NEW ASPHALTIC OVERLAY
 3. PLACE NEW ASPHALTIC PAVEMENT TYPE 1A (100mm)
 4. ADJUST EXISTING MANHOLE/CATCHBASIN TO GRADE
 5. REMOVE EXISTING FRAME AND COVER AND INSTALL NEW FRAME AND SOLID COVER (AP-006 AND AP-007)
 6. INSTALL NEW CAST IRON RISER RING
 7. INSTALL NEW CURB AND GUTTER INLET c/w CATCHBASIN (SD-024) AND CONNECT TO EXISTING LEAD
 8. INSTALL MEW CURB AND GUTTER INLET c/w CATCHBASIN (SD-024) AND CONNECT TO EXISTING 750mm LDS CONCRETE SEWER
 9. REMOVE EXISTING CATCHBASIN
 10. REMOVE EXISTING CATCHPIT AND ABANDON LEAD
 11. ADJUST EXISTING WATER VALVE TO GRADE
 12. RENEW EXISTING CONCRETE BARRIER CURB (100mm REVEAL HT. DOWELLED)
 13. REMOVE EXISTING CONCRETE BARRIER CURB AND CONSTRUCT NEW BARRIER CURB (100mm REVEAL HT. DOWELLED)
 14. CONSTRUCT NEW 100mm CONCRETE SIDEWALK
 15. CONSTRUCT NEW CURB RAMP (10mm HT. INTEGRAL)



METRIC
WHOLE NUMBERS INDICATE MILLIMETRES
DECIMALIZED NUMBERS INDICATE METRES

150 mm W.M.	WATERMAIN	150 mm W.M.	HYDRO	— x —	Q PROFILE
150 mm W.M.	HYDRANT	150 mm W.M.	M.T.S.	— □ —	WEST GUTTER
150 mm W.M.	VALVE	150 mm W.M.	CONCRETE	— ○ —	EAST GUTTER
300mm L.D.S.	LAND DRAINAGE SEWER	300mm L.D.S.	ASPHALT	— ◇ —	N/W PROPERTY LINE
250mm W.W.S.	WASTEWATER SEWER	250mm W.W.S.	PROPERTY LINE	— ○ —	S/E PROPERTY LINE
150 mm W.M.	MANHOLE	150 mm W.M.	SURVEY BAR	— □ —	
150 mm W.M.	CATCH BASIN	150 mm W.M.	ELEVATION	(235.750)	
150 mm W.M.	CATCH PIT	150 mm W.M.	TREE	— ○ —	
150 mm W.M.	JUNCTIONS	150 mm W.M.	SIDEWALK RAMP	— ▬ —	
150 mm W.M.	CULVERT	150 mm W.M.	CONCRETE SIDEWALK	— ▬ —	
150 mm W.M.	GAS	150 mm W.M.	FENCE	— ▬ —	
EXISTING	LEGEND - PLAN	PROPOSED	EXISTING	LEGEND - PLAN	PROPOSED
EXISTING	LEGEND - PROFILE	PROPOSED	EXISTING	LEGEND - PROFILE	PROPOSED

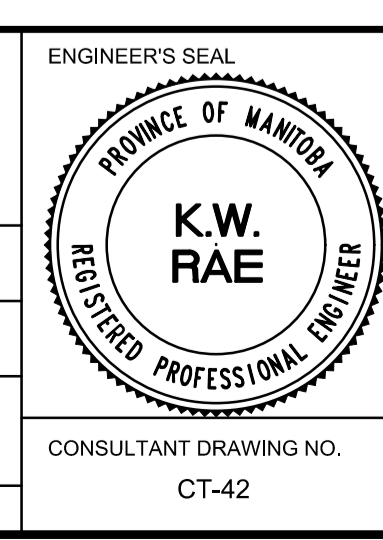
LOCATION APPROVED UNDERGROUND STRUCTURES

SUPV. U/G STRUCTURES COMMITTEE DATE

NOTE:
LOCATION OF UNDERGROUND STRUCTURES AS SHOWN ARE BASED ON THE BEST INFORMATION AVAILABLE. BUT NO GUARANTEE IS GIVEN THAT ALL EXISTING UTILITIES ARE SHOWN OR THAT THE GIVEN LOCATIONS ARE EXACT. CONFIRMATION OF EXISTENCE AND EXACT LOCATION OF ALL SERVICES MUST BE OBTAINED FROM THE INDIVIDUAL UTILITIES BEFORE PROCEEDING WITH CONSTRUCTION.

B.M. 24-028	S.W. Cor. Hutchings St & Sheppard Ave. 10m in E. Conc. foundation No. 10 Hutchings St. 2m S. 8.0m below washed stone wall of N.E. Cor. of Blg.	DATE	BY
ELEV. 232.986			
0	ISSUED FOR TENDER	03/05/2018	BC
A	ISSUED FOR REVIEW	02/02/2018	BC
NO.	REVISIONS	DATE	BY

AECOM		ENGINEER'S SEAL	
DESIGNED BY	SS	CHECKED BY	BC/KWR
DRAWN BY	SS/RAM	APPROVED BY	
HOR. SCALE:	1:250	RELEASED FOR CONSTRUCTION BY:	
VERTICAL:	1:10	DATE	



THE CITY OF WINNIPEG
PUBLIC WORKS DEPARTMENT
ENGINEERING DIVISION

2018/2019 INDUSTRIAL STREET RENEWAL PROGRAM

HUTCHINGS STREET - SHEPPARD STREET TO INKSTER BOULEVARD
PAVEMENT REHABILITATION
STATION 0+730 TO STATION 0+860

CITY DRAWING NUMBER
SHEET 42 OF 47

CONSULTANT DRAWING NO. CT-42