

REFERENCE NOTES

- A. PAVEMENT DIMENSIONS ARE TO BACK OF CURB
- B. BASELINE IS CENTRE LINE RIGHT-OF-WAY
- C. PROPERTY LINES OBTAINED FROM CITY OF WINNIPEG L.B.I.S., AND NO SCALE FACTOR WAS APPLIED
- D. REFER TO AECOM FIELD BOOK NO. 4994

CONSTRUCTION NOTES

1. REMOVE EXISTING ASPHALTIC PAVEMENT AND CONSTRUCT NEW ASPHALTIC PAVEMENT TYPE 1A (100mm)
2. REMOVE EXISTING CONCRETE PAVEMENT AND CONSTRUCT NEW 200mm REINFORCED CONCRETE PAVEMENT c/w ASPHALTIC OVERLAY
3. PLACE NEW ASPHALTIC PAVEMENT TYPE 1A (100mm)
4. ADJUST EXISTING MANHOLE/CATCHBASIN TO GRADE
5. REMOVE EXISTING FRAME AND COVER AND INSTALL NEW FRAME AND SOLID COVER (AP-006 AND AP-007)
6. INSTALL NEW CAST IRON RISER RING
7. INSTALL NEW CURB AND GUTTER INLET c/w CATCHBASIN (SD-024) AND CONNECT TO EXISTING LEAD
8. INSTALL MEW CURB AND GUTTER INLET c/w CATCHBASIN (SD-024) AND CONNECT TO EXISTING 450mm LDS CONCRETE SEWER
9. REMOVE EXISTING CATCHBASIN
10. REMOVE EXISTING CATCHPIT AND ABANDON LEAD
11. ADJUST EXISTING WATER VALVE TO GRADE
12. RENEW EXISTING CONCRETE BARRIER CURB (100mm REVEAL HT. DOWELLED)
13. REMOVE EXISTING CONCRETE BARRIER CURB AND CONSTRUCT NEW BARRIER CURB (100mm REVEAL HT. DOWELLED)
14. CONSTRUCT NEW 100mm CONCRETE SIDEWALK
15. CONSTRUCT NEW CURB RAMP (10mm HT. INTEGRAL)
16. REMOVE EXISTING ASPHALT PAVEMENT AND CONSTRUCT NEW ASPHALT PAVEMENT TYPE 1A

AECOM
 Certificate of Authorization
 AECOM Canada Ltd.
 No. 4671 Date: _____

METRIC
 WHOLE NUMBERS INDICATE MILLIMETRES
 DECIMALIZED NUMBERS INDICATE METRES

150 mm W.M.	WATERMAIN	150 mm W.M.	HYDRO	— x —	Q PROFILE
Hydrant	HYDRANT	Hydrant	M.T.S.	— □ —	WEST GUTTER
Valve	VALVE	Valve	CONCRETE	— ○ —	EAST GUTTER
300mm L.D.S.	LAND DRAINAGE SEWER	300mm L.D.S.	ASPHALT	— ◇ —	N/W PROPERTY LINE
250mm W.W.S.	WASTEWATER SEWER	250mm W.W.S.	PROPERTY LINE	— ○ —	S/E PROPERTY LINE
Manhole	MANHOLE	Manhole	SURVEY BAR	— □ —	
Catch Basin	CATCH BASIN	Catch Basin	ELEVATION	(235.750)	
Catch Pit	CATCH PIT	Catch Pit	TREE	— ○ —	
Junctions	JUNCTIONS	Junctions	SIDEWALK RAMP	— ▽ —	
Culvert	CULVERT	Culvert	CONCRETE SIDEWALK	— ▽ —	
Gas	GAS	Gas	FENCE	— ▽ —	
EXISTING	LEGEND - PLAN	PROPOSED	EXISTING	LEGEND - PLAN	PROPOSED
EXISTING	LEGEND - PROFILE	PROPOSED	EXISTING	LEGEND - PROFILE	PROPOSED

LOCATION APPROVED UNDERGROUND STRUCTURES

SUPV. U/G STRUCTURES COMMITTEE DATE _____

NOTE:
 LOCATION OF UNDERGROUND STRUCTURES AS SHOWN ARE BASED ON THE BEST INFORMATION AVAILABLE. BUT NO GUARANTEE IS GIVEN THAT ALL EXISTING UTILITIES ARE SHOWN OR THAT THE GIVEN LOCATIONS ARE EXACT. CONFIRMATION OF EXISTENCE AND EXACT LOCATION OF ALL SERVICES MUST BE OBTAINED FROM THE INDIVIDUAL UTILITIES BEFORE PROCEEDING WITH CONSTRUCTION.

B.M. 24-028	S.W. Cor. Hutchings St. & Sheppard Ave. 10m in E. Conc. foundation No. 10 Hutchings St. 2m S. & 0.5m below washed stone wall of N.E. Cor. of Bldg.	ELEV. 232.986
NO.	REVISIONS	DATE BY
0	ISSUED FOR TENDER	03/05/2018 BC
A	ISSUED FOR REVIEW	02/02/2018 BC

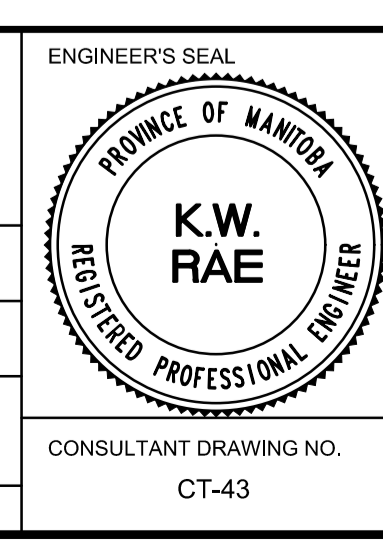
AECOM

DESIGNED BY: SS
 CHECKED BY: BC/KWR

DRAWN BY: SS/RAM
 APPROVED BY:

HOR. SCALE: 1:250
 VERTICAL: 1:10

RELEASED FOR CONSTRUCTION BY: _____
 DATE: _____



THE CITY OF WINNIPEG
 PUBLIC WORKS DEPARTMENT
 ENGINEERING DIVISION

2018/2019 INDUSTRIAL STREET RENEWAL PROGRAM

HUTCHINGS STREET - SHEPPARD STREET TO INKSTER BOULEVARD
 PAVEMENT REHABILITATION
 STATION 0+860 TO STATION 0+990

CITY DRAWING NUMBER: SHEET 43 OF 47

CONSULTANT DRAWING NO. CT-43