

- REFERENCE NOTES**
- PAVEMENT DIMENSIONS ARE TO BACK OF CURB
  - BASELINE IS CENTRE LINE RIGHT-OF-WAY
  - PROPERTY LINES OBTAINED FROM CITY OF WINNIPEG L.B.I.S., AND NO SCALE FACTOR WAS APPLIED
  - REFER TO AECOM FIELD BOOK NO. 4994

- CONSTRUCTION NOTES**
- REMOVE EXISTING ASPHALTIC PAVEMENT AND CONSTRUCT NEW ASPHALTIC PAVEMENT TYPE 1A (100mm)
  - REMOVE EXISTING CONCRETE PAVEMENT AND CONSTRUCT NEW 200mm REINFORCED CONCRETE PAVEMENT c/w NEW ASPHALTIC OVERLAY
  - PLACED MEW ASPHALTIC PAVEMENT TYPE 1A (100mm)
  - ADJUST EXISTING MANHOLE/CATCHBASIN TO GRADE
  - REMOVE EXISTING FRAME AND COVER AND INSTALL NEW FRAME AND SOLID COVER (AP-006 AND AP-007)
  - INSTALL NEW CAST IRON RISER RING
  - INSTALL NEW CURB AND GUTTER INLET c/w CATCHBASIN (SD-024) AND CONNECT TO EXISTING LEAD
  - INSTALL MEW CURB AND GUTTER INLET c/w CATCHBASIN (SD-024) AND CONNECT TO EXISTING 600mm LDS CONCRETE SEWER
  - REMOVE EXISTING CATCHBASIN
  - REMOVE EXISTING CATCHPIT AND ABANDON LEAD
  - ADJUST EXISTING WATER VALVE TO GRADE
  - RENEW EXISTING CONCRETE BARRIER CURB (100mm REVEAL HT. DOWELLED)
  - REMOVE EXISTING CONCRETE BARRIER CURB AND CONSTRUCT NEW BARRIER CURB (100mm REVEAL HT. DOWELLED)
  - CONSTRUCT NEW 100mm CONCRETE SIDEWALK
  - CONSTRUCT NEW CURB RAMP (10mm HT. INTEGRAL)

**AECOM**  
 Certificate of Authorization  
 AECOM Canada Ltd.  
 No. 4671 Date: \_\_\_\_\_

**METRIC**  
 WHOLE NUMBERS INDICATE MILLIMETRES  
 DECIMALIZED NUMBERS INDICATE METRES

150 mm W.M.	WATERMAIN	150 mm W.M.	HYDRANT	HYDRO	— x —	Q PROFILE	—
300mm L.D.S.	LAND DRAINAGE SEWER	300mm L.D.S.	VALVE	M.T.S.	— □ —	WEST GUTTER	—
250mm W.W.S.	WASTEWATER SEWER	250mm W.W.S.	CATCH BASIN	CONCRETE	— ○ —	EAST GUTTER	—
	MANHOLE		CATCH PIT	ASPHALT	— ◇ —	N/W PROPERTY LINE	—
	JUNCTIONS		JUNCTIONS	PROPERTY LINE	— ○ —	S/E PROPERTY LINE	—
	CULVERT		CULVERT	SURVEY BAR	— □ —		—
	GAS		GAS	ELEVATION (235.750)	— □ —		—
EXISTING	LEGEND - PLAN	PROPOSED	EXISTING	LEGEND - PLAN	PROPOSED	EXISTING	LEGEND - PROFILE
							PROPOSED

**LOCATION APPROVED UNDERGROUND STRUCTURES**

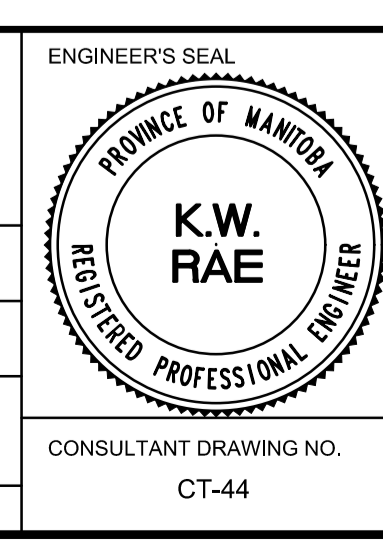
SUPV. U/G STRUCTURES COMMITTEE DATE

**NOTE:**  
 LOCATION OF UNDERGROUND STRUCTURES AS SHOWN ARE BASED ON THE BEST INFORMATION AVAILABLE. BUT NO GUARANTEE IS GIVEN THAT ALL EXISTING UTILITIES ARE SHOWN OR THAT THE GIVEN LOCATIONS ARE EXACT. CONFIRMATION OF EXISTENCE AND EXACT LOCATION OF ALL SERVICES MUST BE OBTAINED FROM THE INDIVIDUAL UTILITIES BEFORE PROCEEDING WITH CONSTRUCTION.

B.M. 24-028	S.W. Cor. Hutchings St & Sheppard Ave. 10m in E. Conc. foundation No. 10 Hutchings St. 2m S. & 0.5m below washed stone wall of N.E. Cor. of Bldg.	ELEV. 232.986
NO.	REVISIONS	DATE
0	ISSUED FOR TENDER	03/05/2018 BC
A	ISSUED FOR REVIEW	02/02/2018 BC

**AECOM**

DESIGNED BY	SS	CHECKED BY	BC/KWR
DRAWN BY	SS/RAM	APPROVED BY	
HOR. SCALE:	1:250	RELEASED FOR CONSTRUCTION BY:	
VERTICAL:	1:10	DATE	



**THE CITY OF WINNIPEG**  
 PUBLIC WORKS DEPARTMENT  
 ENGINEERING DIVISION

2018/2019 INDUSTRIAL STREET RENEWAL PROGRAM

HUTCHINGS STREET - SHEPPARD STREET TO INKSTER BOULEVARD  
 PAVEMENT REHABILITATION  
 STATION 0+990 TO STATION 1+110

CITY DRAWING NUMBER  
 SHEET 44 OF 47

CONSULTANT DRAWING NO. CT-44