

- REFERENCE NOTES**
- A. PAVEMENT DIMENSIONS ARE TO BACK OF CURB
 - B. BASELINE IS CENTRE LINE RIGHT-OF-WAY
 - C. PROPERTY LINES OBTAINED FROM CITY OF WINNIPEG L.B.I.S., AND NO SCALE FACTOR WAS APPLIED
 - D. REFER TO AECOM FIELD BOOK NO. 4994

- CONSTRUCTION NOTES**
1. CONSTRUCT NEW 100mm CONCRETE SIDEWALK
 2. REMOVE EXISTING BARRIER CURB AND INSTALL NEW CONCRETE CURB RAMP (8-12mm REVEAL HT. MONOLITHIC)
 3. RENEW EXISTING CONCRETE BARRIER CURB (100mm REVEAL HT. DOWELLED)
 4. REMOVE EXISTING CONCRETE BARRIER CURB
 5. CONSTRUCT NEW 200mm REINFORCED CONCRETE PAVEMENT
 6. CONSTRUCT NEW CONCRETE MODIFIED BARRIER CURB (150mm REVEAL HT. INTEGRAL)
 7. CONSTRUCT NEW CONCRETE RAMP CURB (8-12mm REVEAL HT. INTEGRAL)
 8. REMOVE EXISTING BARRIER CURB AND BOULEVARD AND CONSTRUCT NEW 200mm REINFORCED CONCRETE PAVEMENT
 9. CONSTRUCT NEW CONCRETE BARRIER CURB (100mm REVEAL HT. DOWELLED)
 10. REMOVE EXISTING CONCRETE MEDIAN AND BULLNOSE
 11. CONSTRUCT NEW CONCRETE SAFETY MEDIAN (SD-226B)
 12. CONSTRUCT NEW MONOLITHIC CONCRETE BULLNOSE
 13. CONSTRUCT NEW CONCRETE MEDIAN SLAB
 14. PLACE NEW ASPHALT PAVEMENT (75mm AVG. TYPE 1A)
 15. ADJUST EXISTING MANHOLE/CATCHBASIN TO GRADE
 16. INSTALL DETECTABLE SURFACE WARNING TILE
 17. REMOVE EXISTING RAILWAYS TRACKS AND PLACE 75mm ASPHALT PAVEMENT TYPE 1A



METRIC
WHOLE NUMBERS INDICATE MILLIMETRES
DECIMALIZED NUMBERS INDICATE METRES

150 mm W.M.	WATERMAIN	150 mm W.M.	HYDRO	— x —	Q PROFILE
Hydrant	HYDRANT	300mm L.D.S.	M.T.S.	— □ —	WEST GUTTER
Valve	VALVE	250mm W.W.S.	CONCRETE	— ○ —	EAST GUTTER
300mm L.D.S.	LAND DRAINAGE SEWER	300mm L.D.S.	ASPHALT	— ◇ —	N/W PROPERTY LINE
250mm W.W.S.	WASTEWATER SEWER	250mm W.W.S.	PROPERTY LINE	— ○ —	S/E PROPERTY LINE
Manhole	MANHOLE	Survey Bar	SURVEY BAR	— □ —	
Catch Basin	CATCH BASIN	Elevation	ELEVATION	(235.750)	
Catch Pit	CATCH PIT	Tree	TREE	— ○ —	
Junctions	JUNCTIONS	Sidewalk Ramp	SIDEWALK RAMP	— ▬ —	
Culvert	CULVERT	Concrete Sidewalk	CONCRETE SIDEWALK	— ▬ —	
Gas	GAS	Fence	FENCE	— ▬ —	
EXISTING	LEGEND - PLAN	PROPOSED	EXISTING	LEGEND - PROFILE	PROPOSED

LOCATION APPROVED UNDERGROUND STRUCTURES

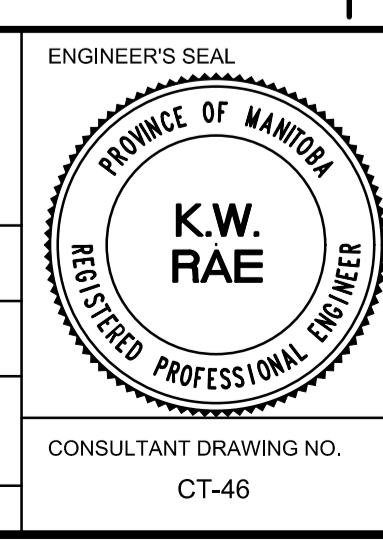
SUPV. U/G STRUCTURES COMMITTEE DATE

NOTE:
LOCATION OF UNDERGROUND STRUCTURES AS SHOWN ARE BASED ON THE BEST INFORMATION AVAILABLE. BUT NO GUARANTEE IS GIVEN THAT ALL EXISTING UTILITIES ARE SHOWN OR THAT THE GIVEN LOCATIONS ARE EXACT. CONFIRMATION OF EXISTENCE AND EXACT LOCATION OF ALL SERVICES MUST BE OBTAINED FROM THE INDIVIDUAL UTILITIES BEFORE PROCEEDING WITH CONSTRUCTION.

B.M.	39-034	S.E. Cor. Moray St. & Sauteaux Cres. Tab. in N. Conc. Foundation No. 737 Moray St. 2 m E. & 0.1 m below Conc. blocks of N.W. Cor. of Bldg.
ELEV.	238.277	
NO.	REVISIONS	DATE BY
0	ISSUED FOR TENDER	03/05/2018 BC
A	ISSUED FOR REVIEW	02/02/2018 BC

AECOM

DESIGNED BY	SS/JT	CHECKED BY	BC/KWR
DRAWN BY	SS	APPROVED BY	
HOR. SCALE:	1:300	RELEASED FOR CONSTRUCTION BY:	
VERTICAL:	1:10	DATE	



THE CITY OF WINNIPEG
PUBLIC WORKS DEPARTMENT
ENGINEERING DIVISION

2018/2019 INDUSTRIAL STREET RENEWAL PROGRAM

MURRAY PARK ROAD NEW CONCRETE SIDEWALK
CREE CRESCENT TO STATION 0+870

CITY DRAWING NUMBER
SHEET 46 OF 47

CONSULTANT DRAWING NO. CT-46