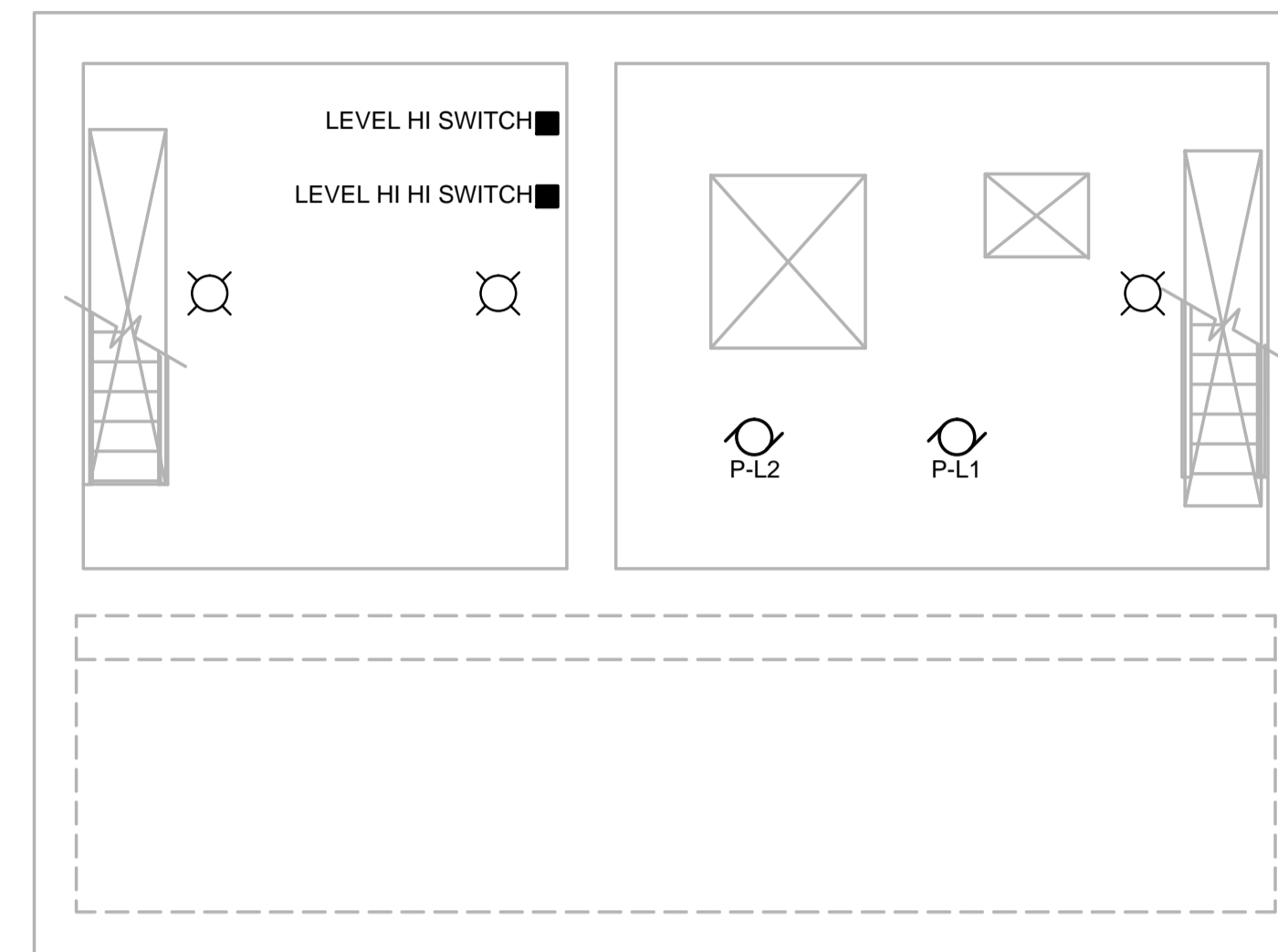


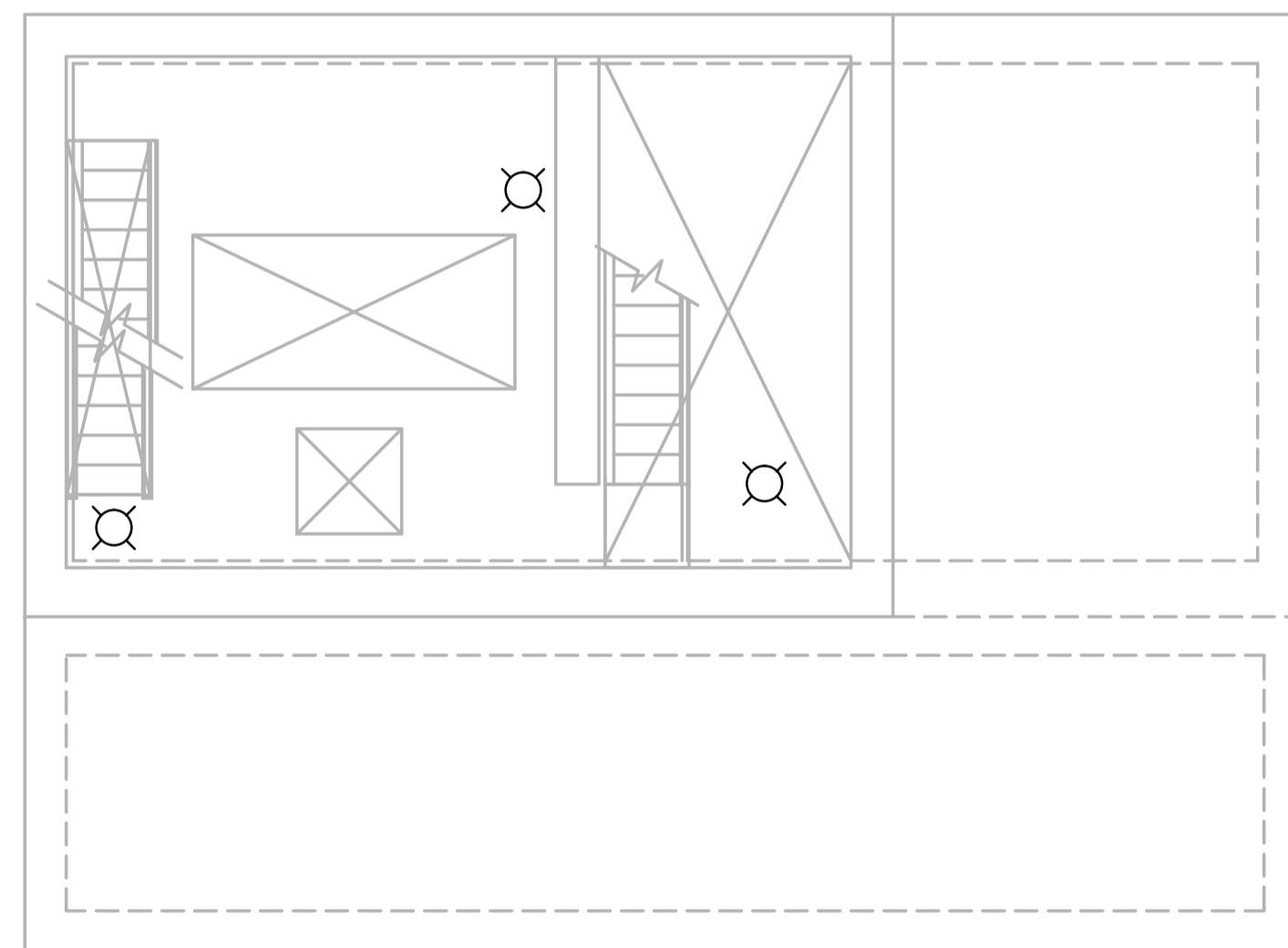
ENTRY LEVEL FLOOR PLAN  
1:50



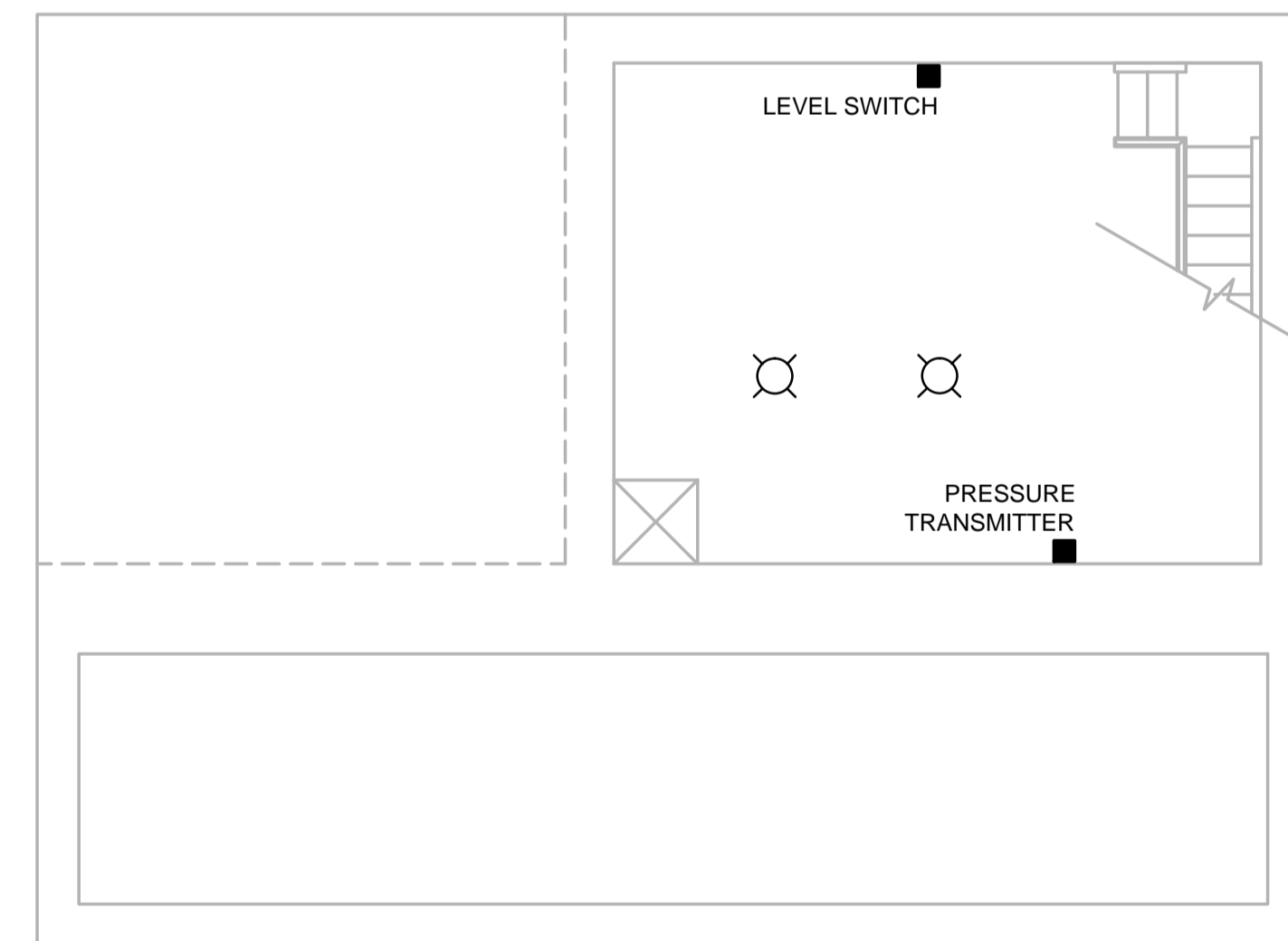
COMM. ROOM, PUMP MOTOR ROOM FLOOR PLAN  
1:50

DEMOLITION NOTES

1. EXISTING LIFT STATION ELECTRICAL EQUIPMENT TO BE REMOVED:
  - LIFT RTU
  - MS-P-L1
  - MS-P-L2
  - FDS-XFMR-L10
  - SPL-L1
  - XFMR-L10
  - PNL-L10
  - LIGHTING
  - ASSOCIATED CABLES AND CONDUIT
2. EXISTING FLOOD RTU PANEL TO BE REMOVED.
3. EXISTING LEVEL SWITCHES AND PRESSURE TRANSMITTER TO BE REUSED.
4. EXISTING FLOOD EQUIPMENT TO REMAIN:
  - PNL-F1
  - PNL-F10
  - XFMR-F10
  - RLY-F1
  - MSS-P-F1
  - MSS-P-F2
  - FLOOD PUMP CONTROL PANEL
  - CSO TERMINATION PANEL



COMM. MOTOR ROOM FLOOR PLAN  
1:50



PUMP ROOM FLOOR PLAN  
1:50

29 June 2018

186936-E-103.dwg

**NOT FOR CONSTRUCTION**



				<b>DILLON CONSULTING</b>		ENGINEER'S SEAL	
DESIGNED BY	B.B.	CHECKED BY	B.L.M.				
DRAWN BY	S.C.K.	APPROVED BY	MH				
HOR. SCALE	AS SHOWN	RELEASED FOR CONSTRUCTION					
VERTICAL	AS SHOWN						
NO.	REVISIONS	DATE	BY	DATE	June 2018	DATE	
0	ISSUED FOR TENDER	06/29/18	BLM				

<b>THE CITY OF WINNIPEG</b> WATER AND WASTE DEPARTMENT		CITY DRAWING NUMBER 1-0145L-E0006-001	
<b>HAWTHORNE WASTEWATER PUMPING STATION UPGRADES</b>		SHEET 17 OF 21	
ELECTRICAL - FLOOR PLAN DEMOLITIONS		CONSULTANT DRAWING NUMBER E-03	
CONSULTANT PROJECT NUMBER 18-6936			