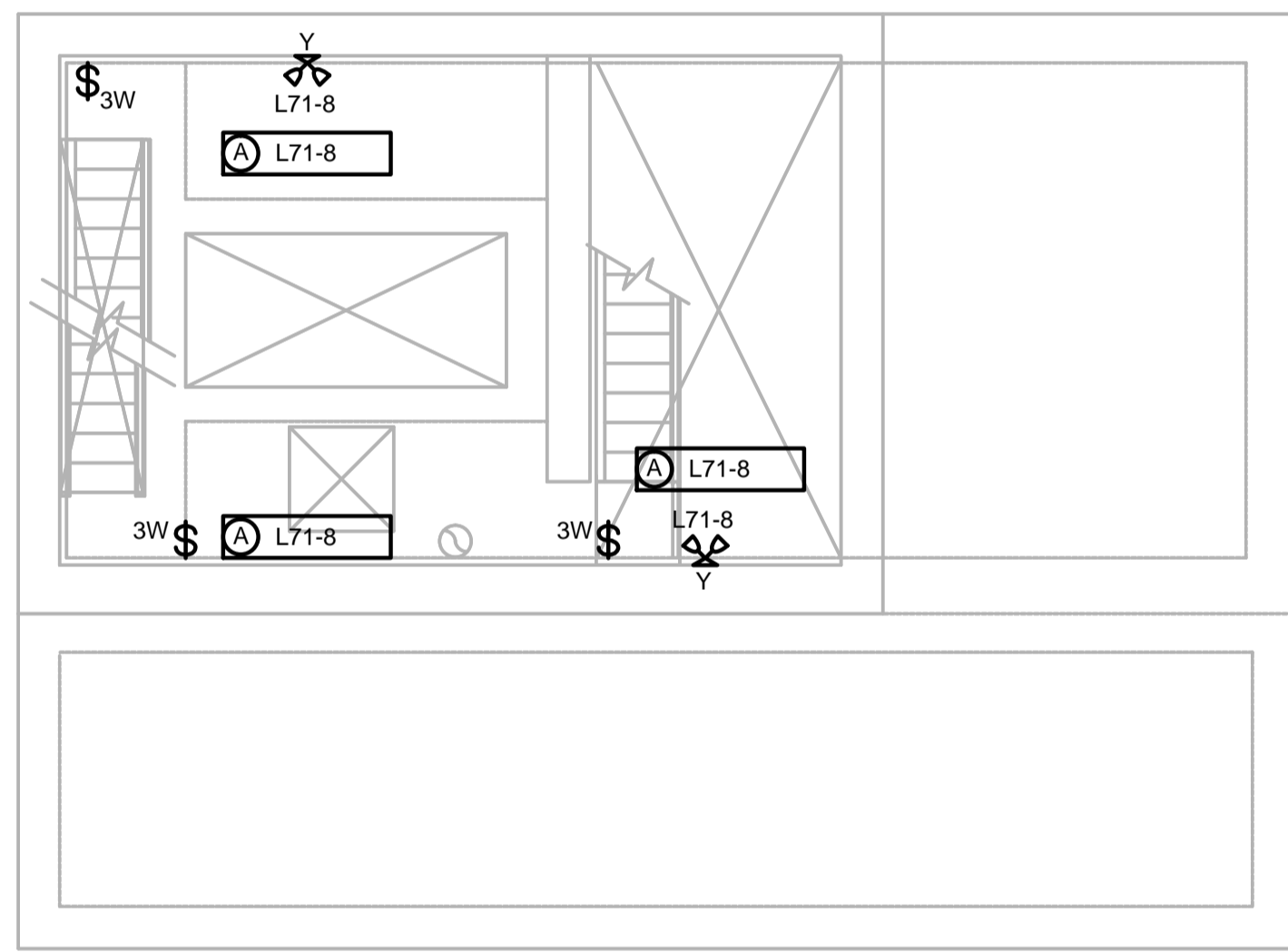


ENTRY LEVEL FLOOR PLAN
1:50

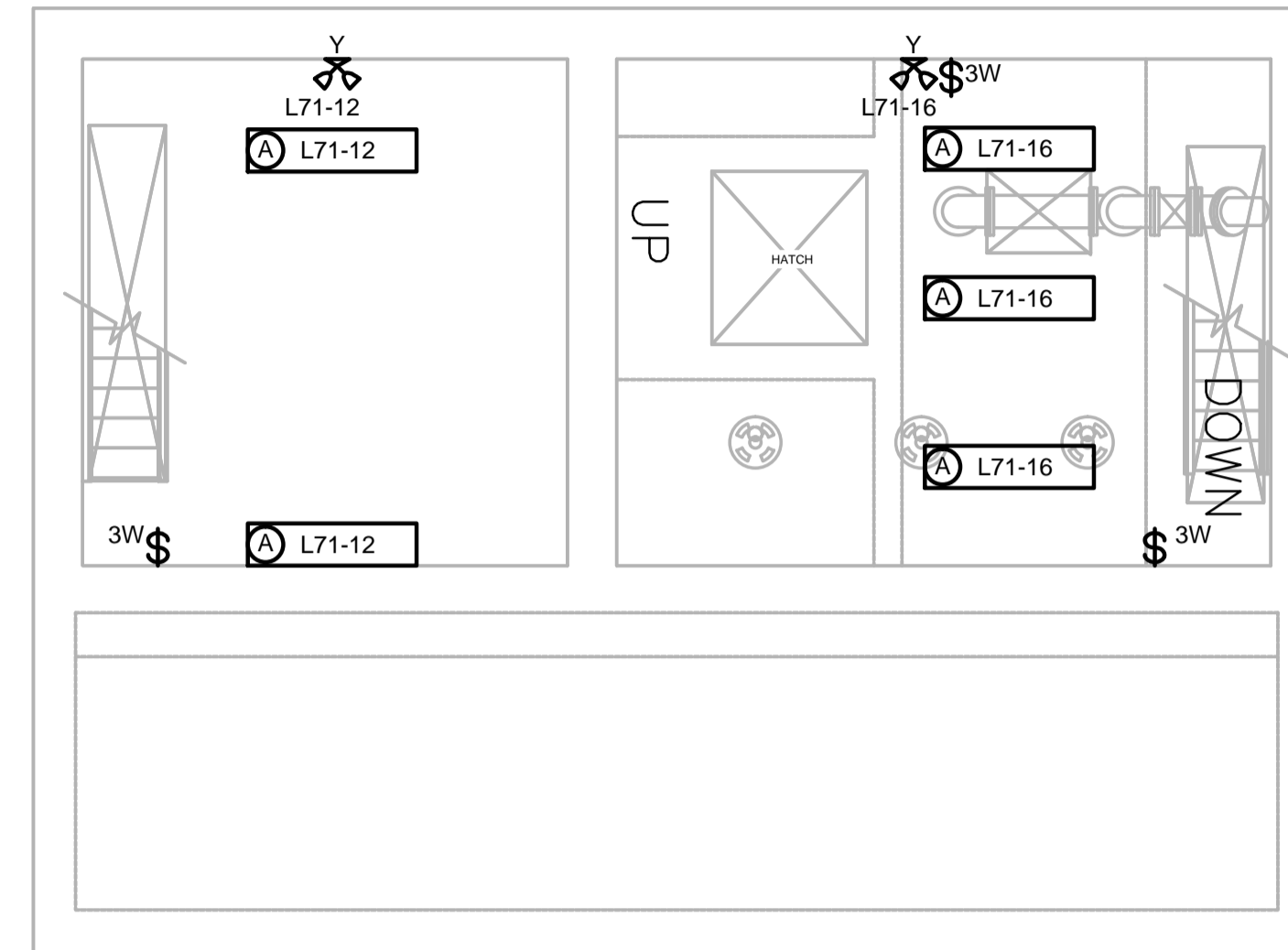


COMM. MOTOR ROOM FLOOR PLAN
1:50

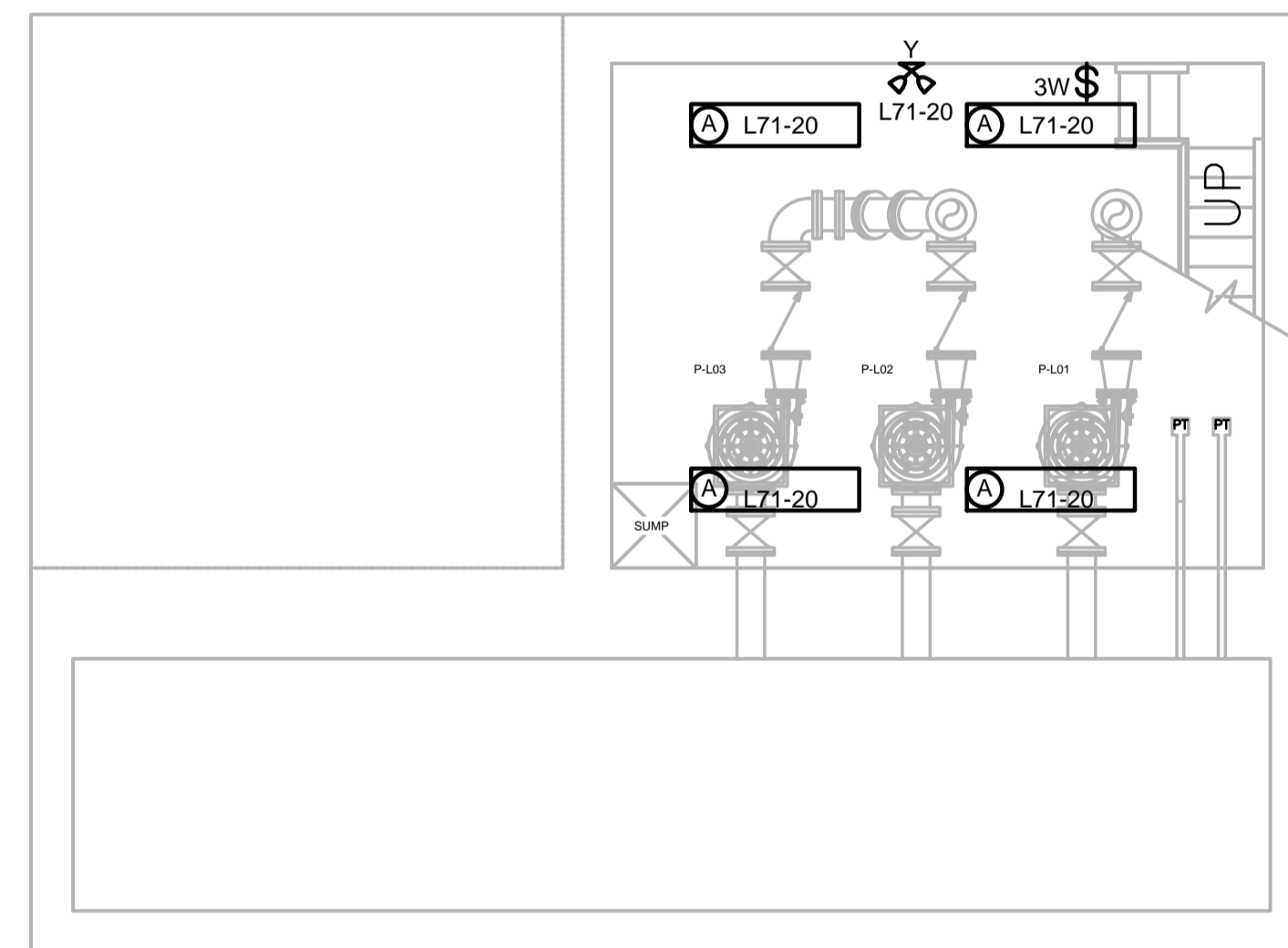
LUMINAIRE SCHEDULE					
TYPE	MANUFACTURER	CAT. NO.	LAMP	VOLTAGE	REMARKS
A4	COOPER VAPOURTITE	4VT2-LD4-4-DR-UNV-L840-WL-SSL	LED 38W	120V	CORROSION RESISTANT
X	BEGHELLI	AQ-RM-12-36	LED 2W	120V	NEMA 4X COMBINATION EXIT/EMERG. LIGHT GREEN PICTORGRAM 2 LAMPS
Y	BEGHELLI	AQ-U-12-36	LED 2W	120V	NEMA 4X DUAL HEAD EMERGENCY LIGHT

- LEGEND
- \$ SPST LIGHT SWITCH
 - \$_{3W} 3 WAY LIGHT SWITCH

- NOTES
- LIGHTING FIXTURES TO BE INSTALLED NO HIGHER THAN 3m (10 FT.) FROM FLOOR.



COMM. ROOM, PUMP MOTOR ROOM FLOOR PLAN
1:50



PUMP ROOM FLOOR PLAN
1:50



NO.	REVISIONS	DATE	BY
0	ISSUED FOR TENDER	06/29/18	BLM

		DESIGNED BY	B.B.	CHECKED BY	B.L.M.
		DRAWN BY	S.C.K.	APPROVED BY	MH
HOR. SCALE		AS SHOWN		RELEASED FOR CONSTRUCTION	
VERTICAL		AS SHOWN		DATE	
		June 2018		DATE	

ENGINEER'S SEAL
CONSULTANT PROJECT NUMBER
18-6936

THE CITY OF WINNIPEG
 WATER AND WASTE DEPARTMENT

HAWTHORNE WASTEWATER PUMPING STATION UPGRADES

CITY DRAWING NUMBER: 1-0145L-E0009-001
 SHEET 20 OF 21
 CONSULTANT DRAWING NUMBER: E-06

ELECTRICAL - LIGHTING FLOOR PLANS

NOT FOR CONSTRUCTION