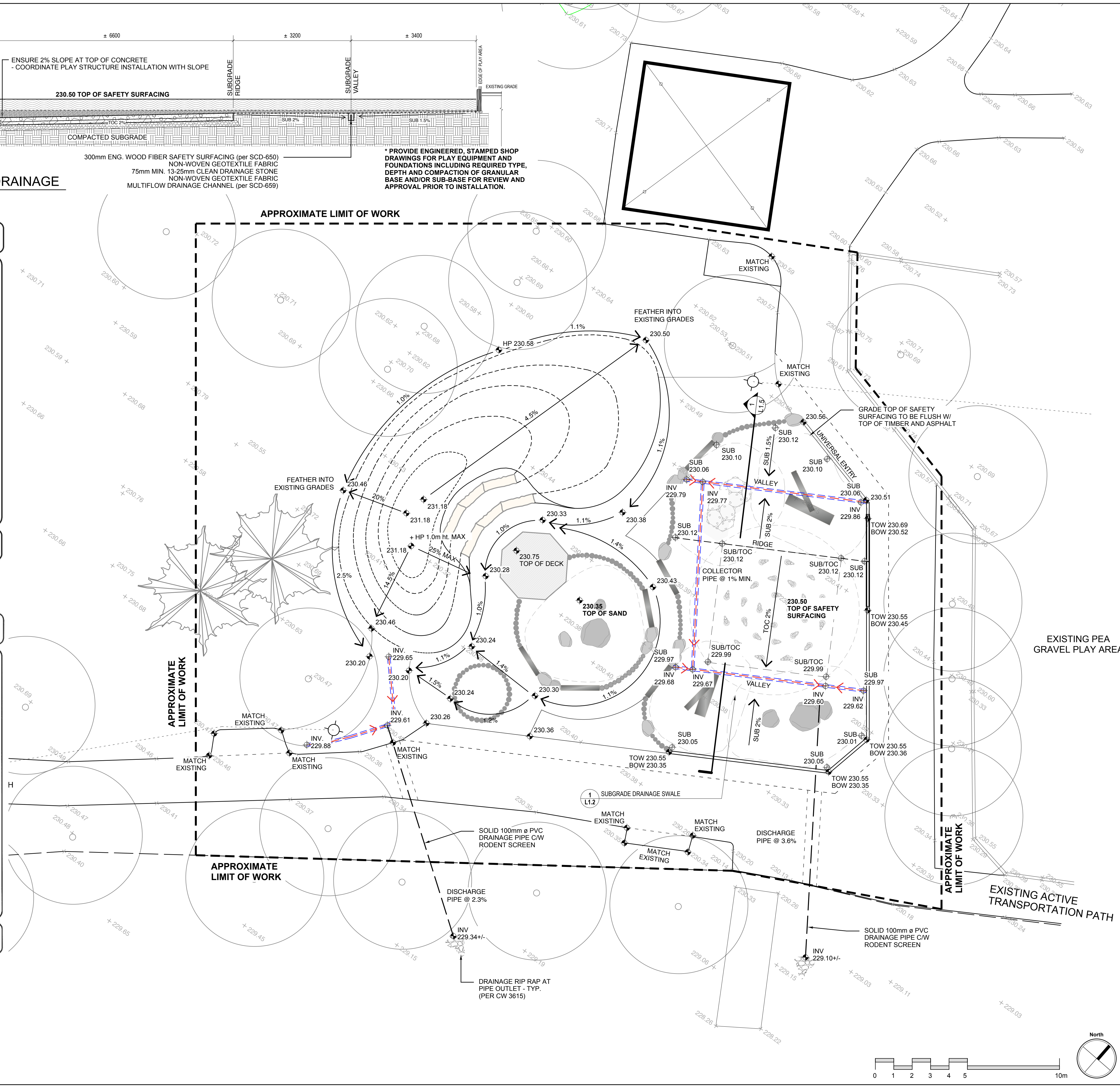
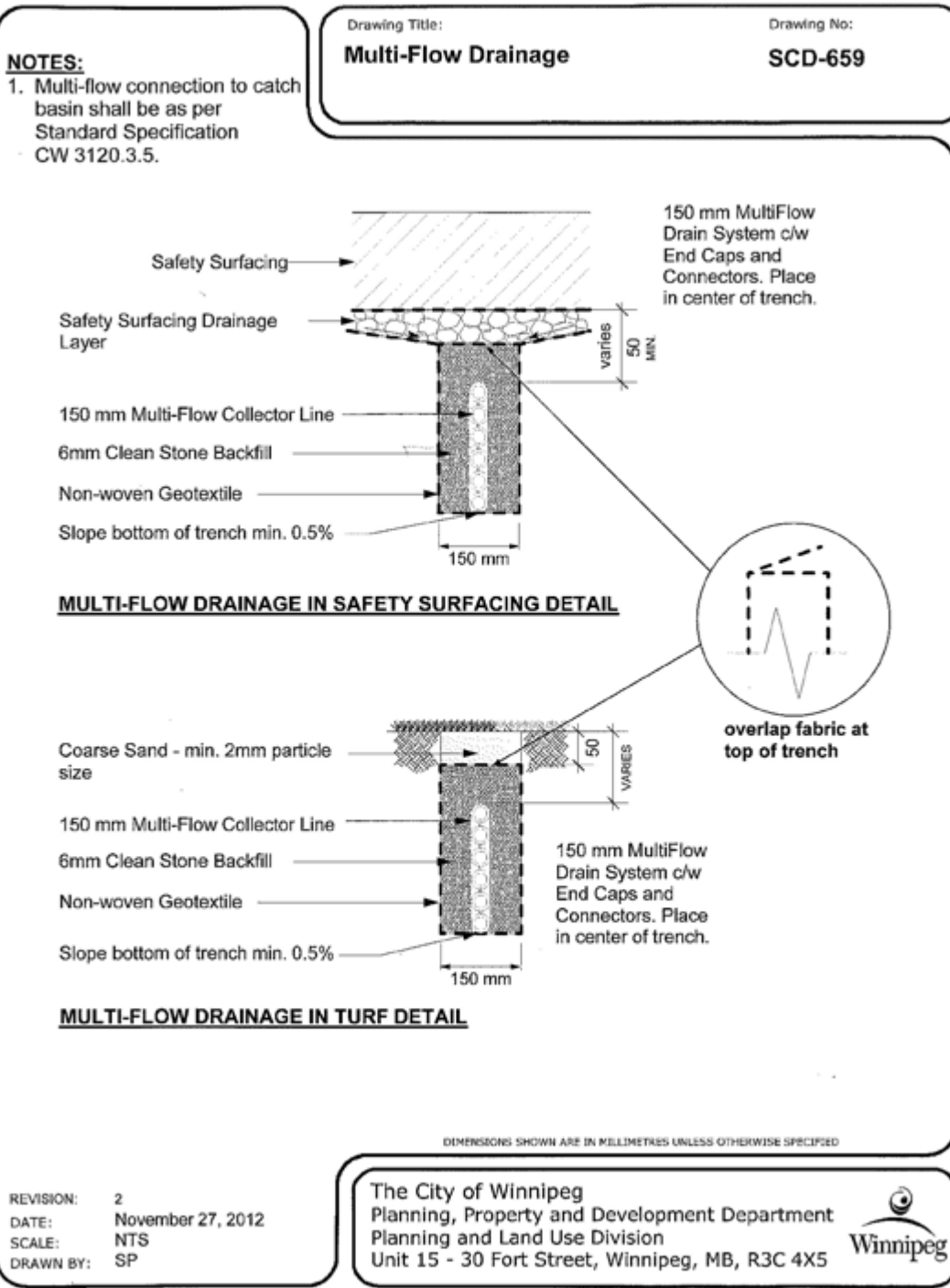
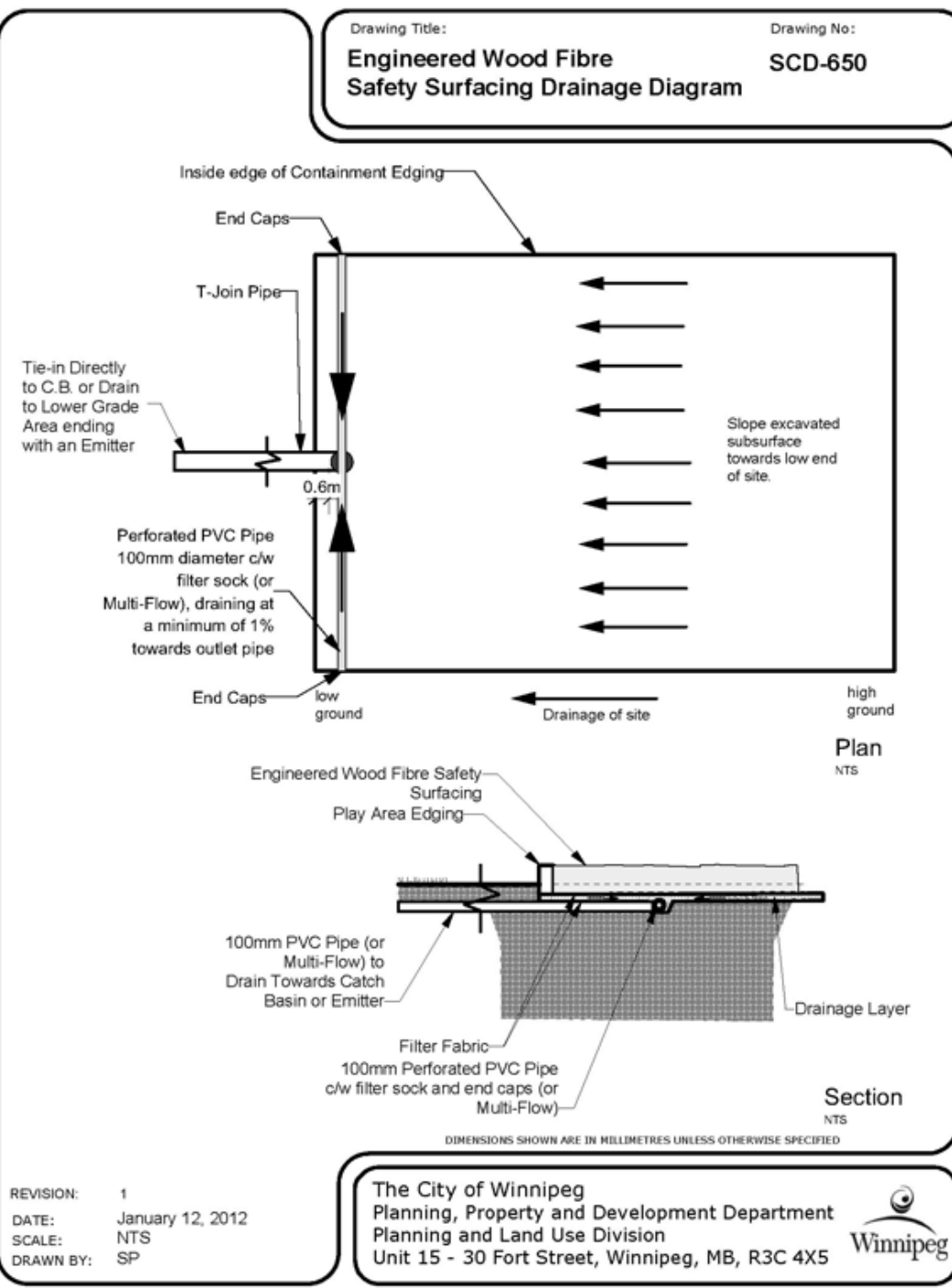


300mm ENG. WOOD FIBRE SAFETY SURFACING (per SCD-650)  
 NON-WOVEN GEOTEXTILE FABRIC  
 75mm MIN. 13-25mm CLEAN DRAINAGE STONE  
 NON-WOVEN GEOTEXTILE FABRIC  
 MULTIFLOW DRAINAGE CHANNEL (per SCD-659)

\* PROVIDE ENGINEERED, STAMPED SHOP DRAWINGS FOR PLAY EQUIPMENT AND FOUNDATIONS INCLUDING REQUIRED TYPE, DEPTH AND COMPACTION OF GRANULAR BASE AND/OR SUB-BASE FOR REVIEW AND APPROVAL PRIOR TO INSTALLATION.

1 SECTION PLAY AREA / SUBGRADE DRAINAGE

L1.5 1:50



- GRADING NOTES**
1. ALL ELEVATIONS ARE IN METRIC UNLESS OTHERWISE SPECIFIED.
  2. CONFIRM GRADES WITH CONTRACT ADMINISTRATOR PRIOR TO INSTALLATION.
  3. REPORT ANY DISCREPANCIES TO THE CONTRACT ADMINISTRATOR IMMEDIATELY.
  4. OBTAIN APPROVAL OF SUB BASE AND ROUGH GRADING CONDUCTING ALL NECESSARY COMPACTION TESTING AS SPECIFIED PRIOR TO INSTALLING HARD SURFACE FINISHES.
  5. FINISH GRADE TO TOLERANCES SPECIFIED AND TO LEVELS AND PROFILES SHOWN ON THIS DRAWING ENSURING POSITIVE DRAINAGE IN ALL LOCATIONS.
  6. REPAIR ANY AREAS DEEMED TOO STEEP, SHALLOW OR OTHERWISE UNACCEPTABLE TO THE CONTRACT ADMINISTRATOR'S SATISFACTION.
  7. PROVIDE SMOOTH, ROUNDED TRANSITIONS AT CROWN AND BOTTOMS OF BERMS.
  8. GRADE EVEN SLOPES.
  9. WALKWAYS NOT TO EXCEED 4.9%.

- GRADING LEGEND**
- LIMIT OF WORK
  - - - - - EXISTING UNDERGROUND ELECTRICAL
  - LP EXISTING LIGHT POLES
  - EXISTING ELEVATION
  - ▲ NEW ELEVATION
  - TOW 230.69 BOW 230.52 TOP OF WALL / BOTTOM OF WALL ELEVATION
  - SUB 230.12 SUBGRADE ELEVATION
  - SUB/TOC 229.99 SUBGRADE / TOP OF CONCRETE ELEVATION
  - INV 229.60 INVERT ELEVATION
  - 1.0% PERCENTAGE AND DIRECTION OF SLOPE
  - ☼ EXISTING TREES

ISSUED FOR CONSTRUCTION MAY 15, 2018

ISSUE NOTES DATE

THIS DRAWING MUST NOT BE SCALED.

THE GENERAL CONTRACTOR SHALL VERIFY ALL DIMENSIONS, DATUMS AND LEVELS PRIOR TO COMMENCEMENT OF WORK. ALL ERRORS AND OMISSIONS TO BE REPORTED IMMEDIATELY TO THE LANDSCAPE ARCHITECT.

VARIATIONS & MODIFICATIONS TO WORK SHOWN ON THESE DRAWINGS SHALL NOT BE CARRIED OUT WITHOUT WRITTEN PERMISSION FROM THE LANDSCAPE ARCHITECT.

THIS DRAWING IS THE EXCLUSIVE PROPERTY OF THE LANDSCAPE ARCHITECTS AND CAN BE REPRODUCED ONLY WITH THE PERMISSION OF THE LANDSCAPE ARCHITECTS. IN WHICH CASE THE REPRODUCTION MUST BEAR THEIR NAME AS LANDSCAPE ARCHITECTS.

PROFESSIONAL SEALS

*Manitoba Association of Landscape Architects*  
 Monica Giesbrecht  
 Member No. 101  
 May 15/18

**HTFC**  
 PLANNING & DESIGN

500-115 Bannatyne Avenue East Winnipeg, MB R3B 0R3  
 PHONE 204 944 9907 WEB htfc.mb.ca

PROJECT TITLE

**ST. JOHN'S PARK REDEVELOPMENT - PHASE 1**

1 FOWLER AVENUE  
 WINNIPEG, MANITOBA

SHEET TITLE

**NATURE PLAYGROUND "AREA B" GRADING PLAN**

DRAWN RG	REVIEWED MG	DRAWING NO. L 1.5
SCALE 1:100	PROJECT No. 17-008	R-0
DATE PRINTED 12:41 PM Tue, May 15, 2018		