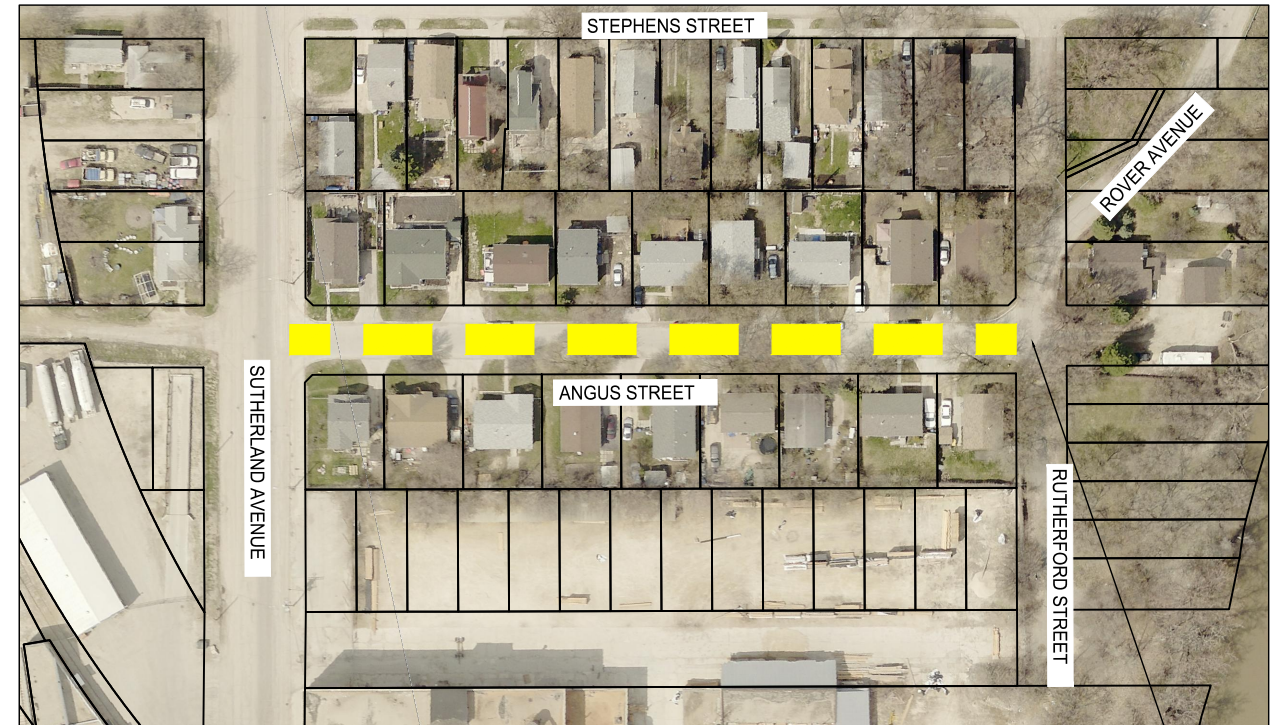


WARDLAW AVENUE - DALY STREET N. TO NASSAU STREET N.

SCALE 1:1500



ANGUS AVENUE - SUTHERLAND AVENUE TO ROVER AVENUE

SCALE 1:1500



ST CROSS STREET - ATLANTIC AVENUE TO POLSON AVENUE

SCALE 1:1500






MANOR HOUSE COURT - MAPLE GLEN DRIVE TO

81 MANOR HOUSE COURT

SCALE 1:1500

PRELIMINARY

LEGEND

-  BUS ROUTE
-  SCHOOL LOCATION
-  LIMIT OF CONSTRUCTION

METRIC

WHOLE NUMBERS INDICATE MILLIMETRES
DECIMALIZED NUMBERS INDICATE METRES



LOCATIONS APPROVED UNDERGROUND STRUCTURES

SKIPPED BY: _____ DATE: _____
 SUPV U/G STRUCTURES: _____ DATE: _____
 LOCATION OF UNDERGROUND STRUCTURES AS SHOWN ARE BASED ON THE BEST INFORMATION AVAILABLE BUT NO GUARANTEE IS GIVEN THAT ALL EXISTING UTILITIES ARE SHOWN OR THAT THE GIVEN LOCATIONS ARE EXACT CONFIRMATION OF EXISTENCE AND EXACT LOCATION OF ALL SERVICES MUST BE OBTAINED FROM THE INDIVIDUAL UTILITIES BEFORE PROCEEDING WITH CONSTRUCTION.

NO.	REVISIONS	DATE	BY
2	ISSUED FOR TENDER	04/06/18	MV
1	ISSUED FOR CLIENT REVIEW	28/05/18	MV

wsp		WSP Canada Group Limited Suite 111 - 93 Lombard Ave Winnipeg, MB R2B 3B1 T. 204.943.3178 F. 204.943.4948 www.wsp.com	
DESIGNED BY	MV	CHECKED BY	VM
DRAWN BY	TW	APPROVED BY	VM
HOR. SCALE	1:1500	RELEASED FOR CONSTRUCTION	DATE
VERTICAL	-		
DATE	28-MAY-2018		

ENGINEER'S SEAL	
CONSULTANT ACAD DWG. NO.	18M-00748-01

THE CITY OF WINNIPEG
 PUBLIC WORKS DEPARTMENT
 ENGINEERING SERVICES DIVISION

2018 THIN BITUMINOUS OVERLAY (TBO) PROGRAM

WARDLAW AVENUE, ANGUS AVENUE, ST. CROSS STREET, MANOR HOUSE COURT

ASPHALT OVERLAY

CITY DRAWING NUMBER	
SHEET	1 OF 4
BID NO.	528-2018

Jun 04, 2018 - 2:16pm
 P:\2018\18M-00748-00 - 2018 TBO Program and Local Improvements\08 WSP Drawings\03 Construction Drawings\Contract 1\18M-00748-00_Contract 1_Plan.dwg - Tab.01

NOTE:
 These design documents are prepared solely for the use by the party with whom the design professional has entered into a contract and there are no representations of any kind made by the design professional to any party with whom the design professional has not entered into a contract.