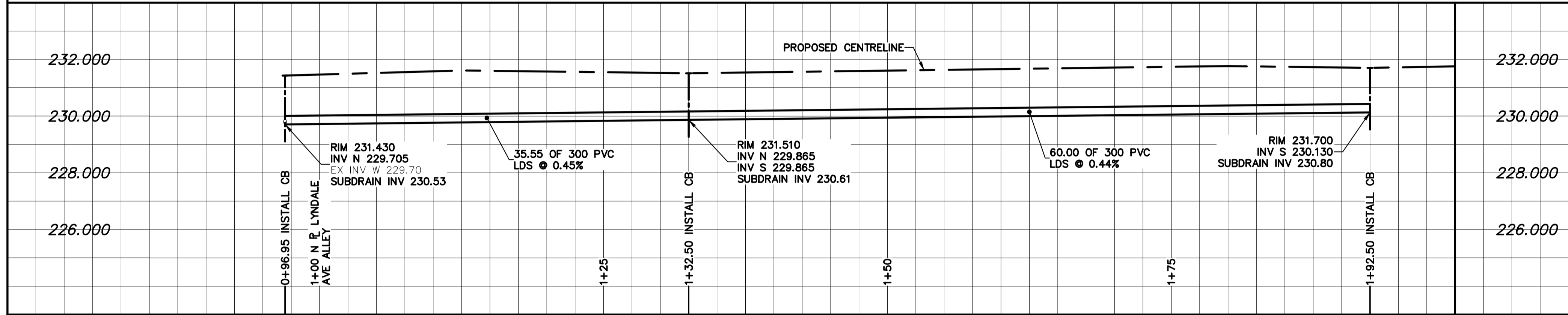


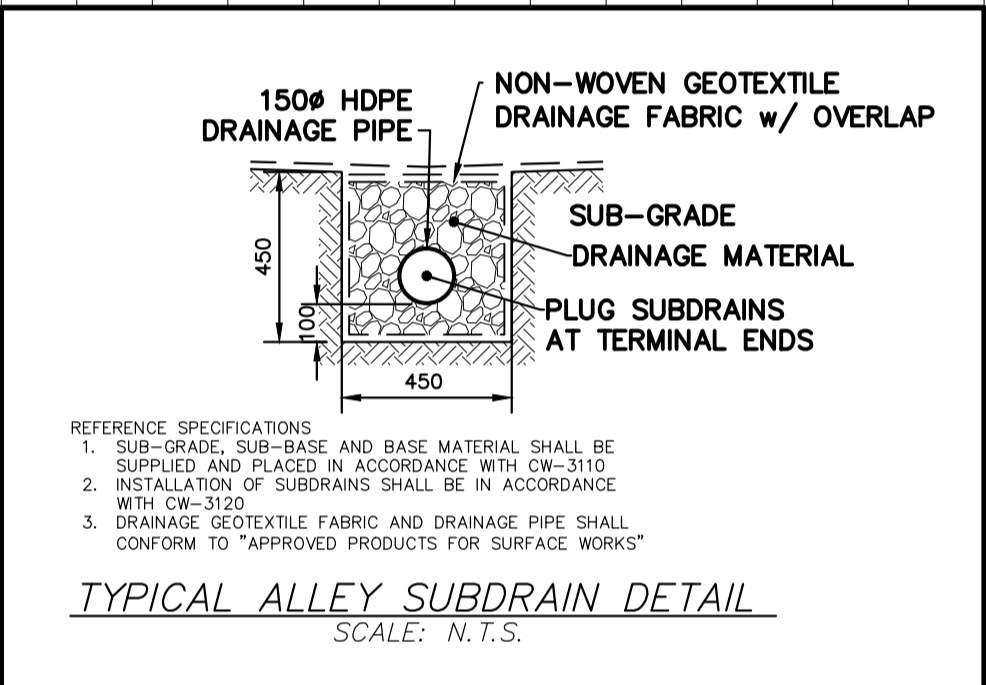
ALLEY PAVEMENT PROFILE
SCALE: 1:250 HOR
1:10 VER

- NOTES:
1. ALL WORK AND MATERIALS TO BE IN ACCORDANCE WITH THE LATEST REVISION OF THE CITY OF WINNIPEG STANDARD CONSTRUCTION SPECIFICATION.
 2. CONTRACTOR TO CONFIRM THE LOCATION OF ALL UTILITIES/SERVICES IN THE FIELD PRIOR TO CONSTRUCTION.
 3. CONTRACTOR TO AVOID DAMAGE TO EXISTING TREES WITHIN THE LIMITS OF THE ALLEY RIGHT OF WAY AS OUTLINED IN THE BID OPPORTUNITY.
 4. TREE AND SHRUB REMOVALS AS DIRECTED BY THE CONTRACT ADMINISTRATOR.
 5. HYDRO POLES AND ANCHORS REQUIRING TEMPORARY SUPPORT TO BE DONE AT THE EXPENSE OF THE CONTRACTOR AS REQUIRED.
 6. WHERE UNSTABLE SUB-GRADES ARE ENCOUNTERED, ADDITIONAL EXCAVATION/SUB-BASE AND INSTALLATION OF GEOTIRD TO BE DETERMINED BY THE CONTRACT ADMINISTRATOR AND CONSTRUCTED IN ACCORDANCE W/ CW-3110.
 7. ISOLATE EXISTING HYDRO POLES AS PER SD-228C.
 8. RENEW CURB AND SIDEWALK AS DIRECTED BY THE CONTRACT ADMINISTRATOR.
 9. ALL EXISTING PRIVATE APPROACHES TO BE RENEWED AS DIRECTED BY THE CONTRACT ADMINISTRATOR.
 10. ADJUSTMENTS TO PROPOSED CROSSFALL, WHERE REQUIRED, ARE TO BE DETERMINED BY THE CONTRACT ADMINISTRATOR TO SUIT EXISTING DRIVEWAYS, APPROACHES, ETC.
 11. ALL BOULEVARD RESTORATION TO BE SODDED UNLESS OTHERWISE NOTED.
 12. REMOVE, ADJUST, AND SUPPLY PRECAST SIDEWALK BLOCKS AS DIRECTED BY THE CONTRACT ADMINISTRATOR.
 13. ALL LAND DRAINAGE SEWER EXCAVATIONS TO BE JETTED, FLOODED, AND TAMPED AS PER CW2030-R7.



LAND DRAINAGE SEWER PROFILE
SCALE: 1:250 HOR
1:100 VER

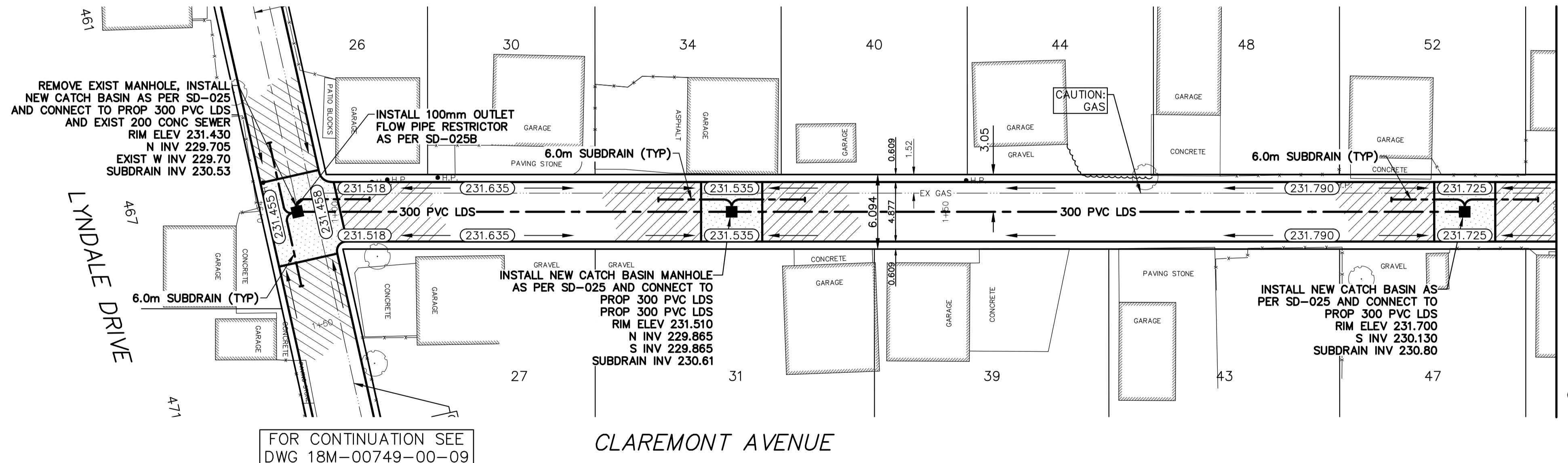
THERE SHALL BE NO INCREASE IN CUMULATIVE PEAK FLOW ENTERING CS AND/OR SRS SYSTEMS AS A RESULT OF CONSTRUCTION WORKS SHOWN.



NOTE: CHAINAGES SHOWN ARE ALONG ϕ OF RIGHT-OF-WAY

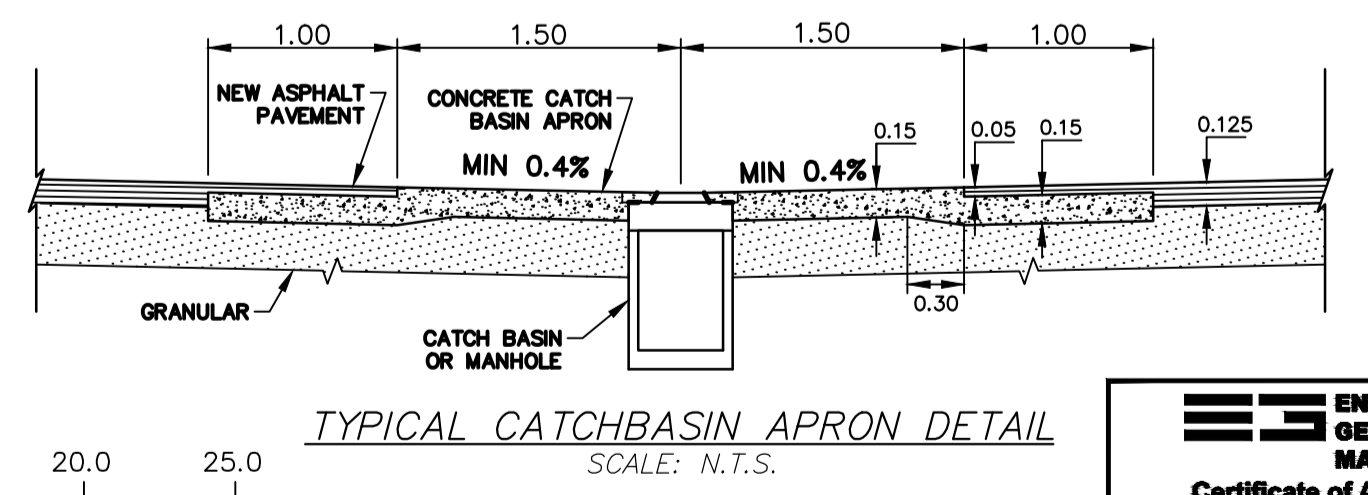
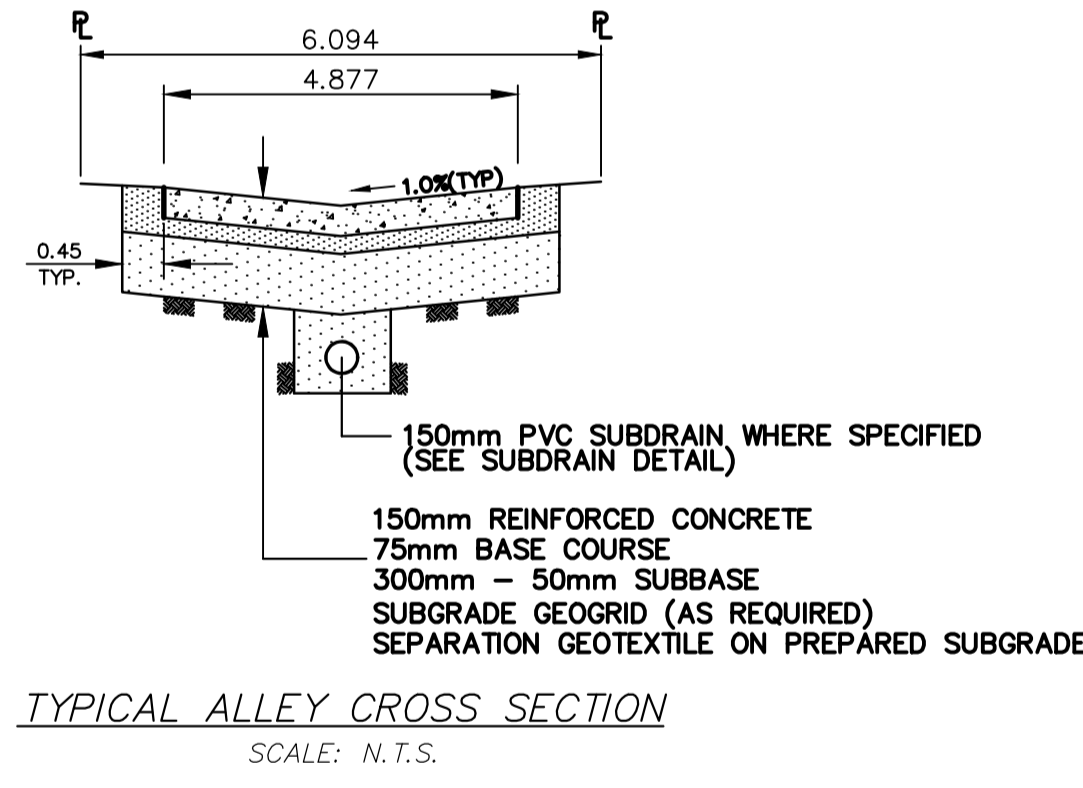
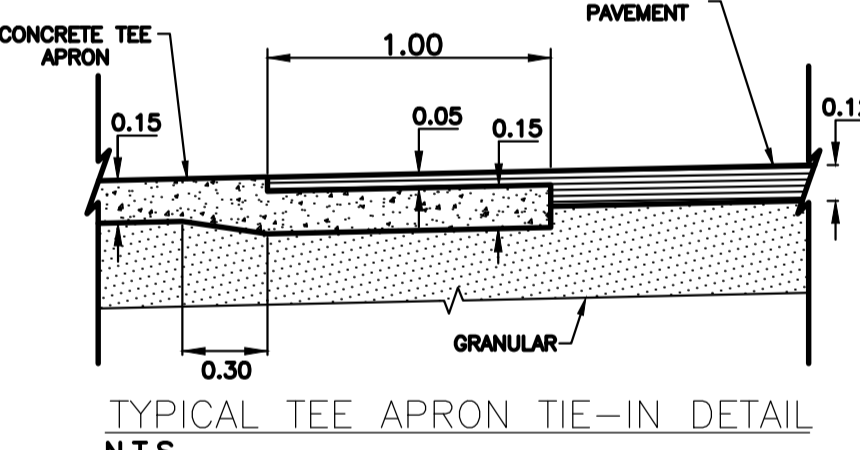
FOR CONTINUATION SEE DWG 18M-00749-00-09

FERNDALE AVENUE

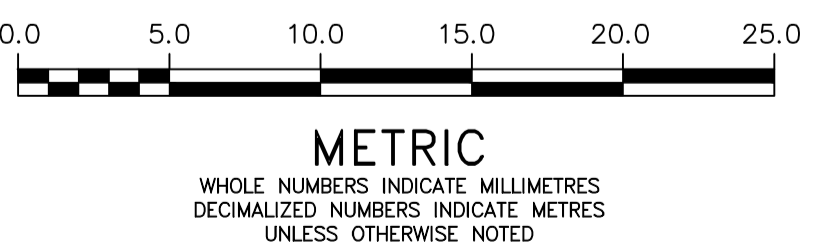


FOR CONTINUATION SEE DWG 18M-00749-00-09

CLAREMONT AVENUE



MATCHLINE 2+00 FOR CONTINUATION SEE DWG 18M-00749-00-11



**ENGINEERS
GEO-SCIENTISTS
MANITOBA**
Certificate of Authorization
WSP Canada Group Limited
No. 6657

WATERMAIN	M.T.S.	150 WWS	WATERMAIN	150 WWS
HYDRANT	CONCRETE/ASPHALT	300 LDS	VALVE	300 LDS
VALVE	SIDEWALK	250 WWS	LAND DRAINAGE SEWER	300 LDS
CURB STOP	CURB RAMP		WASTE WATER SEWER	250 WWS
LAND DRAINAGE SEWER	ELEVATIONS	(232.00)	CENTERLINE	
WASTE WATER SEWER	PROPERTY LINE		SOUTH & EAST GUTTER	
CB LEAD	SURVEY BAR		NORTH & WEST GUTTER	
MANHOLE	HYDRO POLE		S & E GARAGE PAD	
CATCH BASIN	STREET LIGHT		N & W GARAGE PAD	
GAS	JOINTS			
HYDRO	ASPHALT REPAIR			
EXISTING	LEGEND - PLAN	PROPOSED	EXISTING	LEGEND - PROFILE
			PROPOSED	

LOCATION APPROVED UNDERGROUND STRUCTURES

SUPPLY	U/G	STRUCTURES	DATE

NOTE:
LOCATION OF UNDERGROUND STRUCTURES AS SHOWN ARE BASED ON THE BEST INFORMATION AVAILABLE BUT NO GUARANTEE IS GIVEN THAT ALL EXISTING UTILITIES ARE SHOWN OR THAT THE GIVEN LOCATIONS ARE EXACT. CONFIRMATION OF EXISTENCE AND EXACT LOCATION OF ALL SERVICES MUST BE OBTAINED FROM THE INDIVIDUAL UTILITIES BEFORE PROCEEDING WITH CONSTRUCTION.

B.M. ELEV.			
---	---	---	---
3	ISSUED FOR TENDER	18/07/10	M.B.S.
2	UDS REVIEW	18/07/08	K.G.
1	ISSUED FOR COW REVIEW	18/06/27	R.H.
NO	REVISIONS	DATE	BY

wsp

111-93 Lombard Avenue
Winnipeg, Manitoba
R3B 3B1 Canada
Phone: 204-943-3178
Fax: 204-943-4948
wsp.com

DESIGNED BY: R.H. CHECKED BY: K.G.
DRAWN BY: R.H. APPROVED BY: S.M.

HOR. SCALE: 1:250 RELEASED FOR CONSTRUCTION: ---
VERT. SCALE: AS SHOWN

CONSULTANT DRAWING NO. 18M-00749-00-10

NOT FOR CONSTRUCTION

DATE: MAY 2018

THE CITY OF WINNIPEG
PUBLIC WORKS DEPARTMENT

2018 LOCAL IMPROVEMENTS
FERNDALE AVE./CLAREMONT AVE. ALLEY
LYNDALE DR. ALLEY TO STA. 2+00

CITY DRAWING NO. LD-----
SHEET 10 OF 12
BID OPPORTUNITY 530-2018

APSHALT RECONSTRUCTION