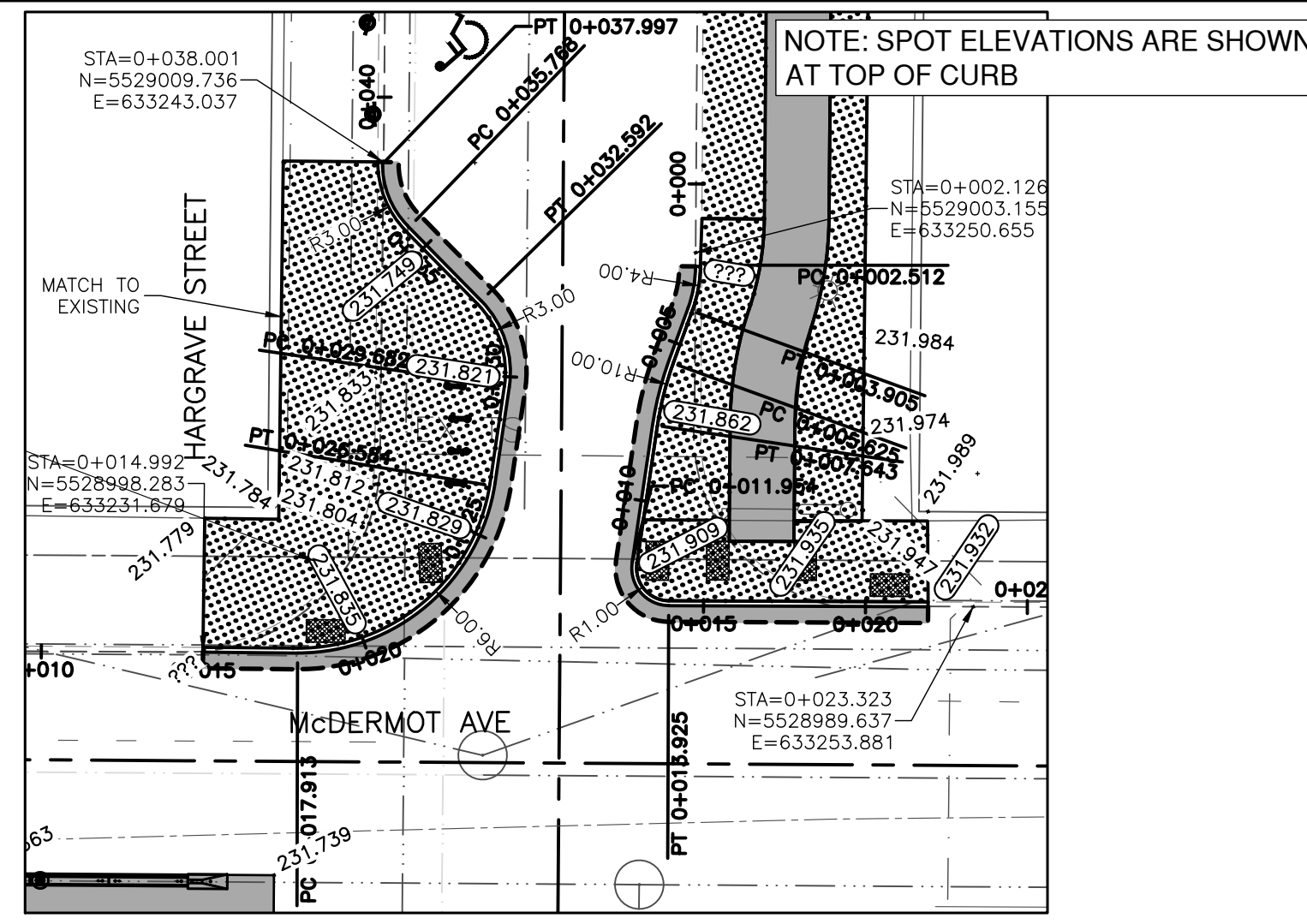


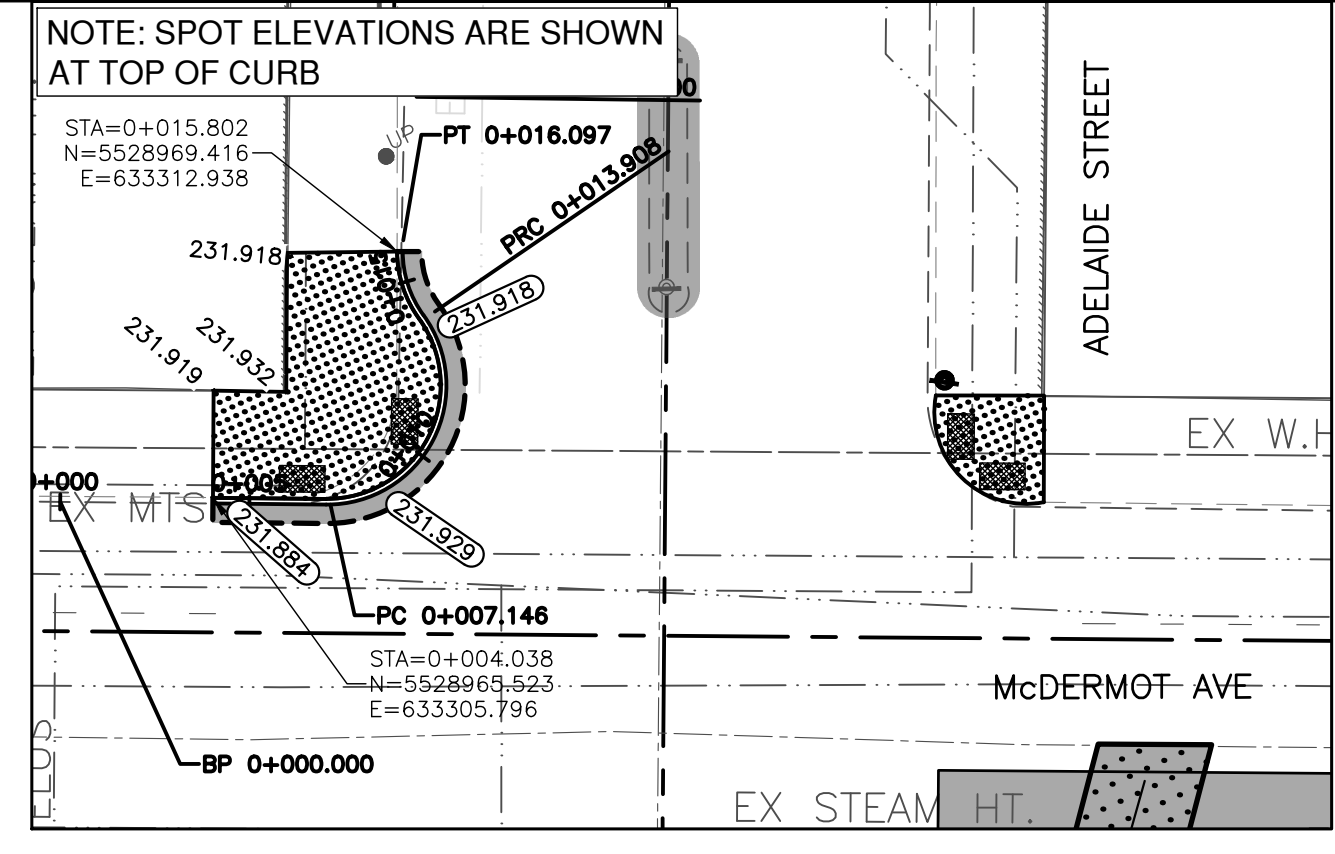
NORTHWEST PROFILE
Scale H-1:200 V=1:10



SPOT ELEVATIONS
Scale H-1:200

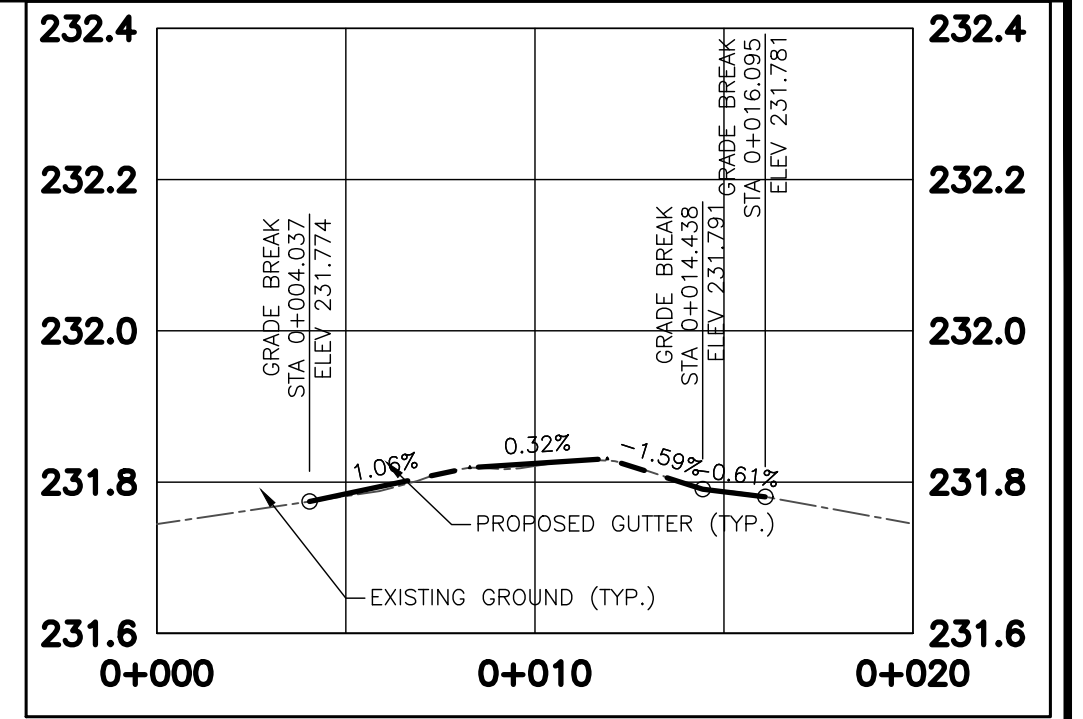
**McDERMOT AVENUE AT HARGRAVE STREET
NORTHWEST & NORTHEAST CURBS**

- GENERAL NOTES:**
- DESIGN GRADES ARE TO BE CONFIRMED ONCE PLANNING HAS BEEN COMPLETED.
 - ADJUST VALVES TO MATCH FINAL GRADES.
 - ADJUST PAVEMENT MANHOLE AND CATCH BASIN FRAMES 50mm BELOW FINAL GRADE TO ACCOMMODATE A RISER RING FOR FINAL ASPHALT PAVING OPERATIONS.
 - MAINTAIN TRAFFIC AS OUTLINED IN THE TRAFFIC MANAGEMENT SPECIFICATION.
 - RADIUS CURB RENEWAL ON INTERSECTING STREETS & BACK LANES TO BE MODIFIED BARRIER CURB AS REQUIRED.
 - CONCRETE REPAIRS TO BE CONFIRMED BY THE CONTRACT ADMINISTRATOR.
 - CURB AND SIDEWALK RENEWAL AS DIRECTED BY THE CONTRACT ADMINISTRATOR.
 - MAINTAIN 25-75mm OF REVEAL ON THE SIGNAL BASES.
 - SEE DWG C22 FOR ADJUSTABLE CURB AND END UNIT DETAILS.
 - NEW CURB TO BE TIED TO EXISTING OVER 2.0m. SEE DWG C23 FOR DETAIL.
 - INSTALL DETECTABLE TILE AS PER CW 3326

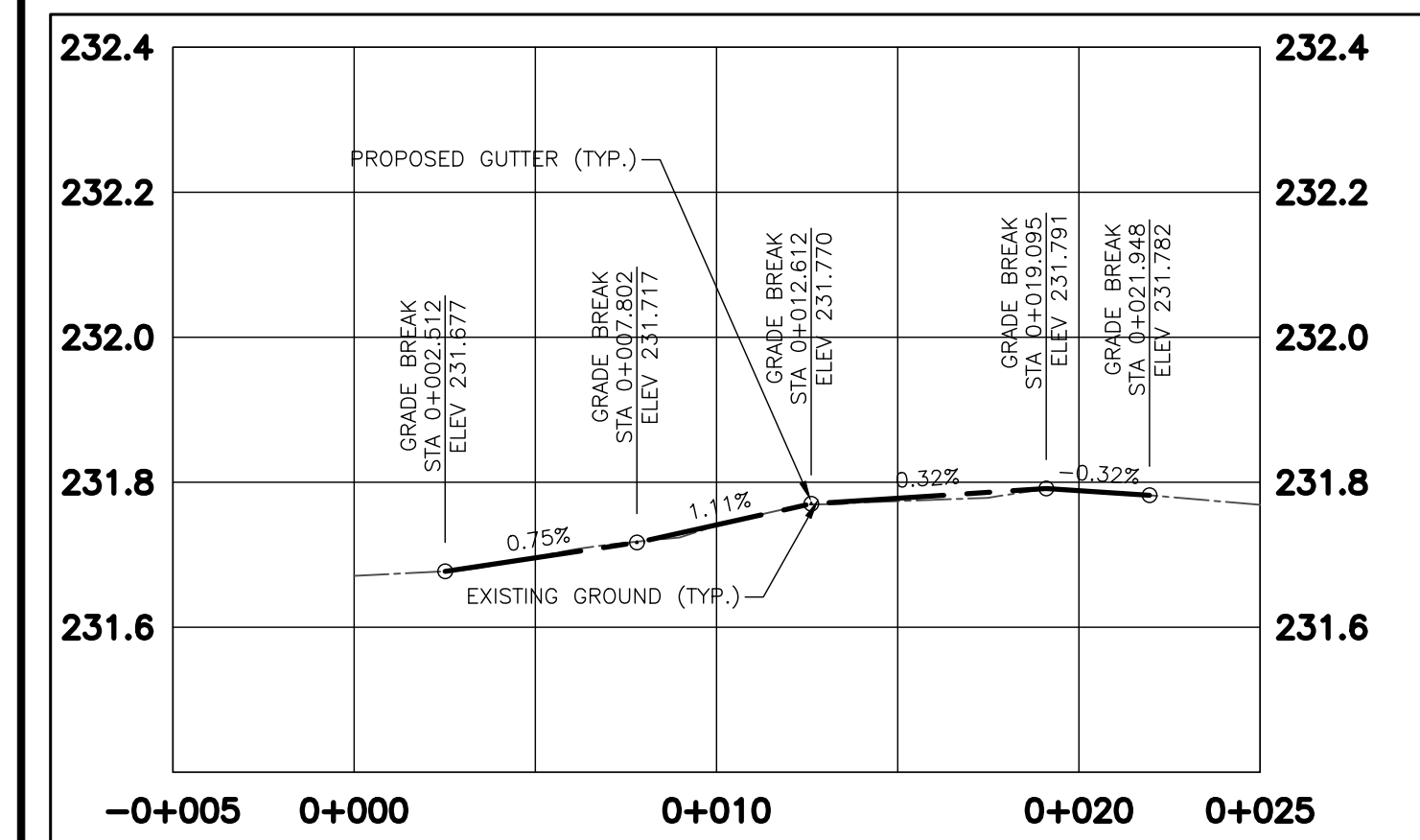


SPOT ELEVATIONS
Scale H-1:200

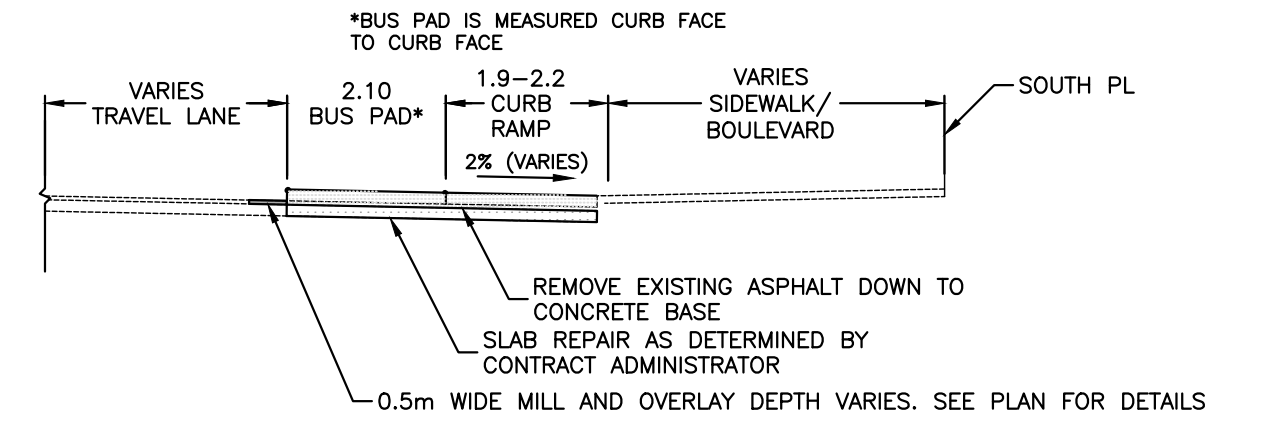
**McDERMOT AVENUE AT ADELAIDE STREET
NORTHWEST CURB**



NORTHWEST PROFILE
Scale H-1:200 V=1:10



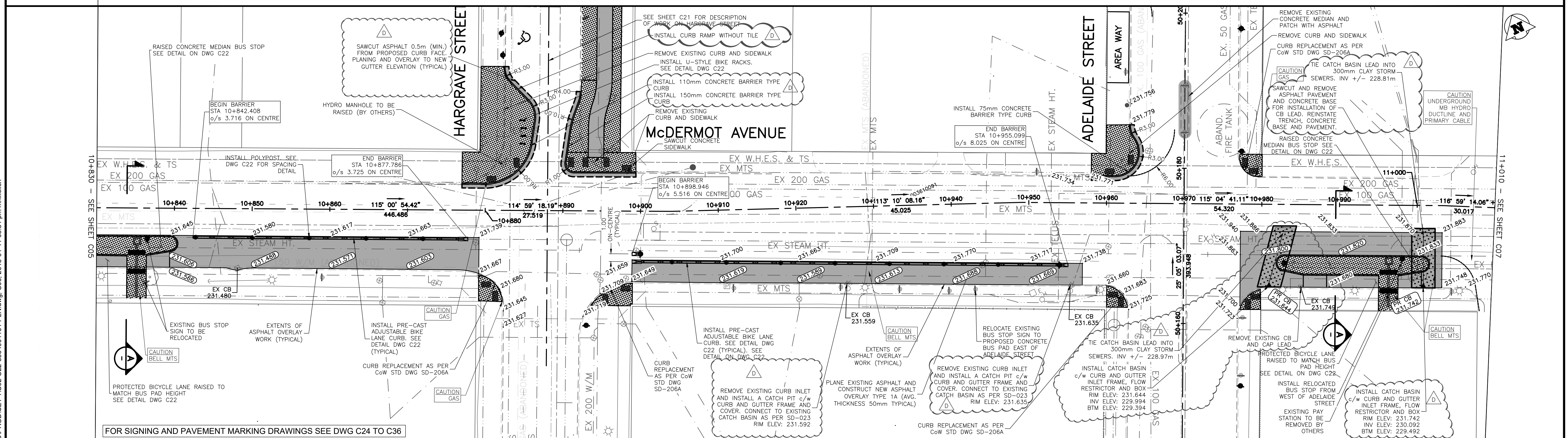
NORTHEAST PROFILE
Scale H-1:200 V=1:10



TYPICAL SECTION - BUS PAD
NOT TO SCALE

**ENGINEERS
GEOSCIENTISTS
MANITOBA**

Certificate of Authorization
Urban Systems Ltd.
No. 5053



150 mm W.W.	WATERMAIN	150 mm W.W.	HYDRO	ADJUSTABLE CURB
Hydrant	HYDRANT	Hydro	M.T.S.	ADJUSTABLE END UNIT
Valve	VALVE	Concrete	CONCRETE	DECORATIVE LIGHT
300mm L.D.S.	LAND DRAINAGE SEWER	300mm L.D.S.	ASPHALT	POLYPOST
250mm W.W.S.	WASTEWATER SEWER	250mm W.W.S.	PROPERTY LINE	
Manhole	MANHOLE	Survey Bar	SURVEY BAR	
Catch Basin	CATCH BASIN	Elevation (35.750)	ELEVATION (35.750)	
Curb Inlet	CURB INLET	Tree	TREE	
Junctions	JUNCTIONS	Sidewalk Detectable	SIDEWALK DETECTABLE	
Culvert	CULVERT	Concrete Sidewalk	CONCRETE SIDEWALK	
Gas	GAS	Fence	FENCE	
Existing	LEGEND - PLAN	Proposed	LEGEND - PLAN	Proposed
Existing	LEGEND - PROFILE	Proposed	LEGEND - PROFILE	Proposed

LOCATION APPROVED UNDERGROUND STRUCTURES

NO.	REVISIONS	DATE	BY

URBAN systems

DESIGNED BY	M. Nikolich	CHECKED BY	G. Smith
DRAWN BY	M. Nikolich	APPROVED BY	G. Propp
HOR. SCALE:	1:250	RELEASED FOR CONSTRUCTION BY:	
VERTICAL:	1:25	DATE	APRIL 11, 2018

THE CITY OF WINNIPEG
PUBLIC WORKS DEPARTMENT
ENGINEERING DIVISION

McDermot Bannatyne Adjustable
Bike Lanes

McDermot Avenue
Plan Profile
Station 10+830 to 11+010

SHEET 06 OF 36
CAD FILE DRAWING NUMBER
C02-C22-3354001101-PLN.DWG
CITY DRAWING NUMBER
P-3496-06

U:\Projects_VAN\3354001101\Design\CAD\PROD\SET 1\C02-C22-3354001101-PLN.dwg, C06, 2018-04-11 03:31 pm mnikolich