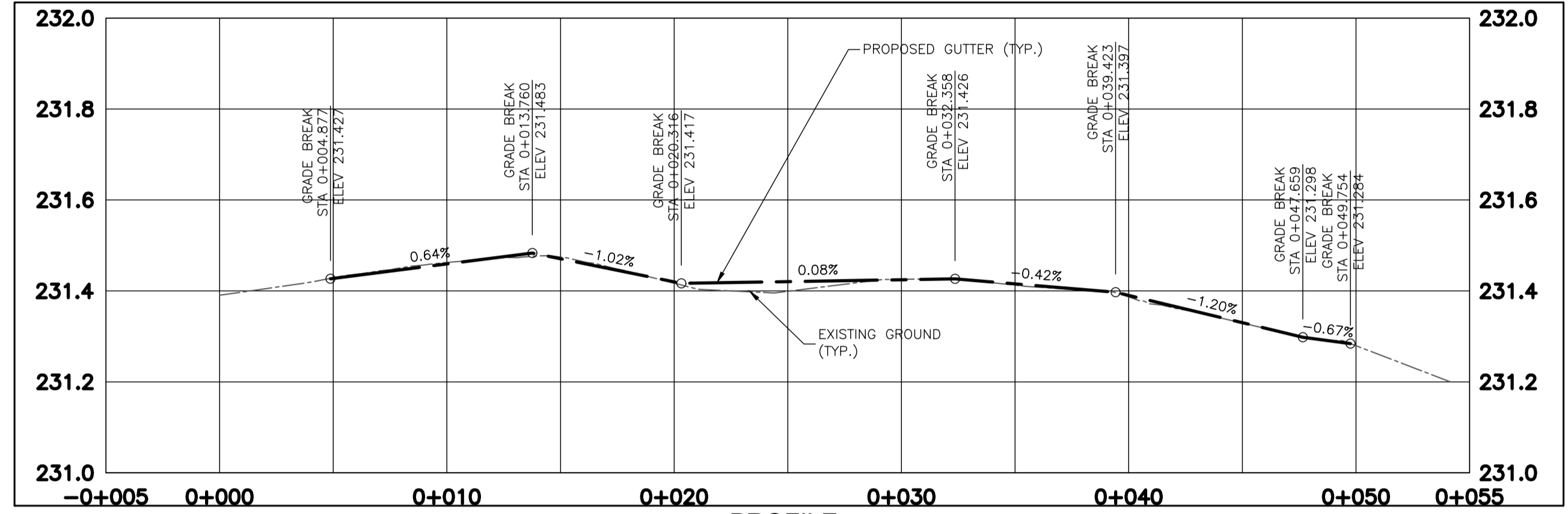


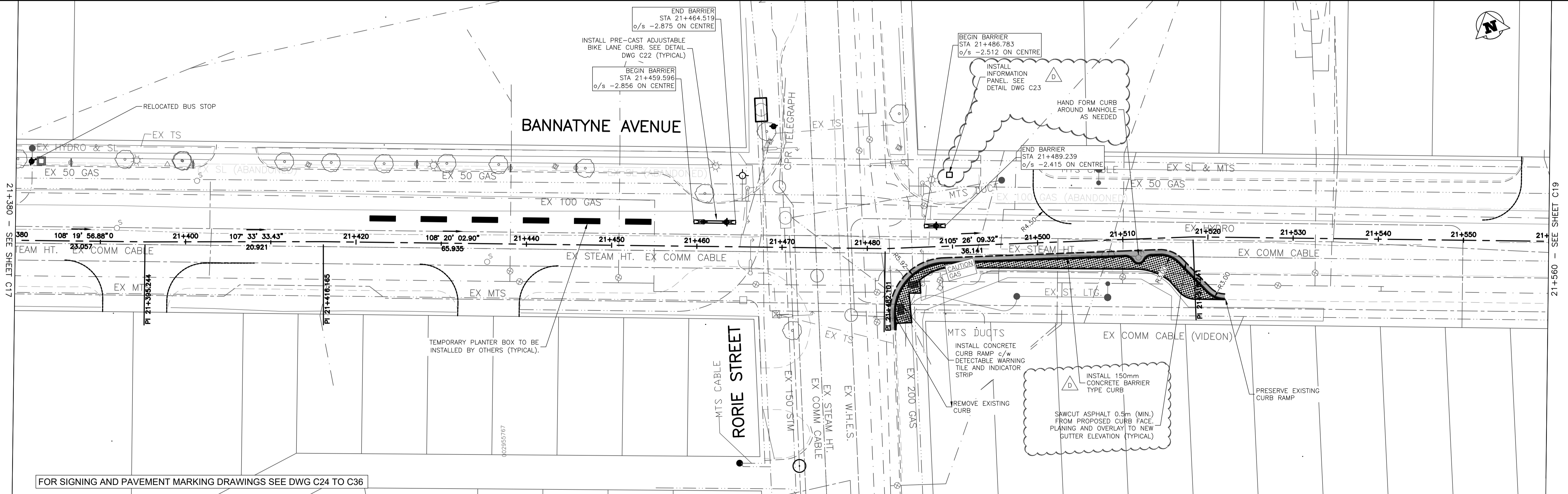
**SPOT ELEVATIONS**  
Scale H-1:200



**PROFILE**  
Scale H-1:200 V=1:10  
**BANNATYNE AVENUE AT RORIE STREET**  
**SOUTH SIDE CURB**

**ENGINEERS**  
GEOSCIENTISTS  
MANITOBA  
Certificate of Authorization  
Urban Systems Ltd.  
No. 5053

- GENERAL NOTES:**
- DESIGN GRADES ARE TO BE CONFIRMED ONCE PLANING HAS BEEN COMPLETED.
  - ADJUST VALVES TO MATCH FINAL GRADES.
  - ADJUST PAVEMENT MANHOLE AND CATCH BASIN FRAMES 50mm BELOW FINAL GRADE TO ACCOMMODATE A RISER RING FOR FINAL ASPHALT PAVING OPERATIONS.
  - MAINTAIN TRAFFIC AS OUTLINED IN THE TRAFFIC MANAGEMENT SPECIFICATION.
  - RADIi CURB RENEWAL ON INTERSECTING STREETS & BACK LANES TO BE MODIFIED BARRIER CURB AS REQUIRED.
  - CONCRETE REPAIRS TO BE CONFIRMED BY THE CONTRACT ADMINISTRATOR.
  - CURB AND SIDEWALK RENEWAL AS DIRECTED BY THE CONTRACT ADMINISTRATOR.
  - MAINTAIN 25-75mm OF REVEAL ON THE SIGNAL BASES.
  - SEE DWG C22 FOR ADJUSTABLE CURB AND END UNIT DETAILS.
  - NEW CURB TO BE TIED TO EXISTING OVER 2.0m. SEE DWG C23 FOR DETAIL.
  - INSTALL DETECTABLE TILE AS PER CW 3326



U:\Projects\_VAN\3354001\101\Design\CADD\PROJ\SET 1\02-C22-3354001\101-PLN.dwg, C18, 2018-04-11 03:01 pm mnikolich

150 mm W.M.	WATERMAIN	150 mm W.M.	HYDRO	ADJUSTABLE CURB	LOCATION APPROVED UNDERGROUND STRUCTURES
Hydrant	HYDRANT	M.T.S.	M.T.S.	ADJUSTABLE END UNIT	
Valve	VALVE	CONCRETE	CONCRETE	DECORATIVE LIGHT	
300mm L.D.S.	LAND DRAINAGE SEWER	ASPHALT	ASPHALT	POLYPOST	
250mm W.W.S.	WASTEWATER SEWER	PROPERTY LINE	PROPERTY LINE		
Manhole	MANHOLE	SURVEY BAR	SURVEY BAR		
Catch Basin	CATCH BASIN	ELEVATION (35.750)	ELEVATION		
Curb Inlet	CURB INLET	TREE	TREE		
Junctions	JUNCTIONS	SIDEWALK DETECTABLE	SIDEWALK DETECTABLE		
Culvert	CULVERT	CONCRETE SIDEWALK	CONCRETE SIDEWALK		
Gas	GAS	FENCE	FENCE		
EXISTING	LEGEND - PLAN	PROPOSED	EXISTING	LEGEND - PROFILE	PROPOSED

**LOCATION APPROVED UNDERGROUND STRUCTURES**

SUPV. U/G STRUCTURES COMMITTEE DATE

NOTE:  
LOCATION OF UNDERGROUND STRUCTURES AS SHOWN ARE BASED ON THE BEST INFORMATION AVAILABLE. BUT NO GUARANTEE IS GIVEN THAT ALL EXISTING UTILITIES ARE SHOWN OR THAT THE GIVEN LOCATIONS ARE EXACT. CONFIRMATION OF EXISTENCE AND EXACT LOCATION OF ALL SERVICES MUST BE OBTAINED FROM THE INDIVIDUAL UTILITIES BEFORE PROCEEDING WITH CONSTRUCTION.

B.M. ELEV.	NO.	REVISIONS	DATE	BY
A	60%	DETAIL DESIGN	2018-01-41	GS
B	90%	DETAIL DESIGN	2018-03-12	GS
C		ISSUED FOR TENDER	2018-03-28	GS
D		ADDENDUM No.1	2018-04-11	GS

**URBAN systems**

DESIGNED BY: M. Nikolich  
DRAWN BY: M. Nikolich  
HOR. SCALE: 1:250  
VERTICAL: 1:25

CHECKED BY: G. Smith  
APPROVED BY: G. Propp  
RELEASED FOR CONSTRUCTION BY:

DATE: APRIL 11, 2018

ENGINEER'S SEAL

**NOT FOR CONSTRUCTION**

CONSULTANT DRAWING NO. 3354.0011.01 C18

**THE CITY OF WINNIPEG**  
PUBLIC WORKS DEPARTMENT  
ENGINEERING DIVISION

McDermot Bannatyne Adjustable Bike Lanes  
Bannatyne Avenue  
Plan Profile  
Station 21+380 to 21+560

SHEET 18 OF 36  
CAD FILE DRAWING NUMBER C02-C22-3354001101-PLN.DWG  
CITY DRAWING NUMBER P-3496-18