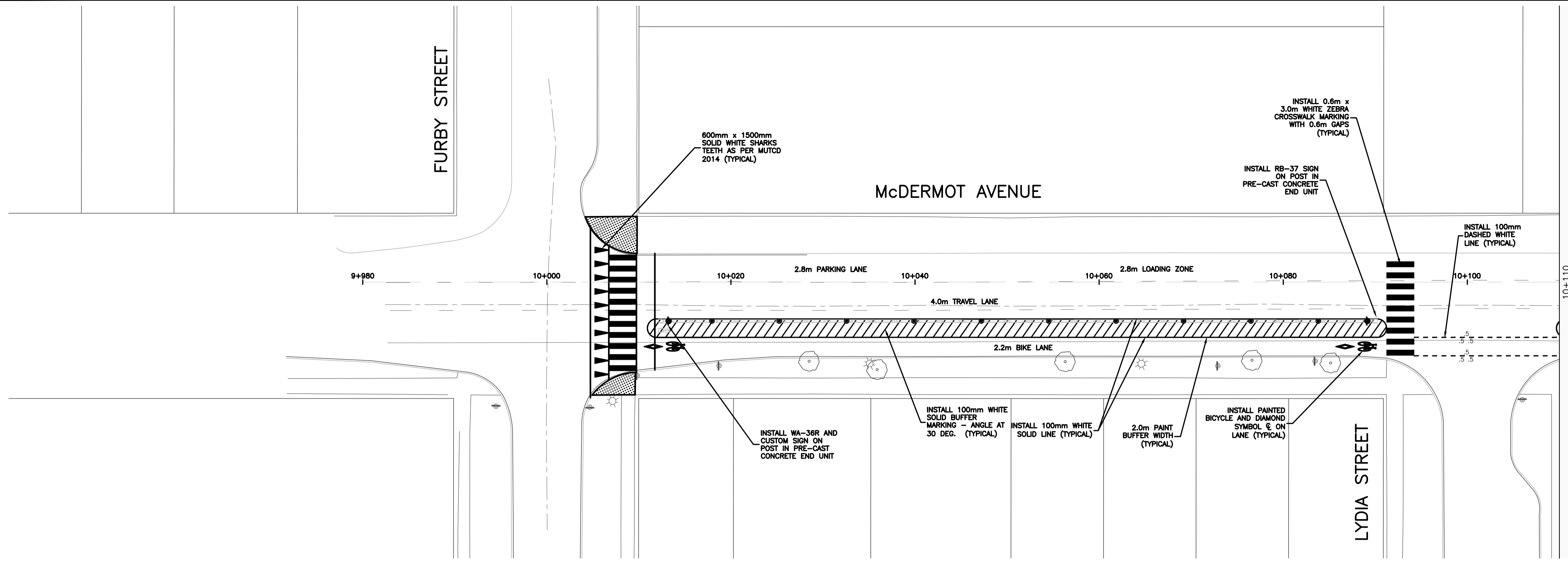




FURBY STREET

McDERMOT AVENUE

LYDIA STREET

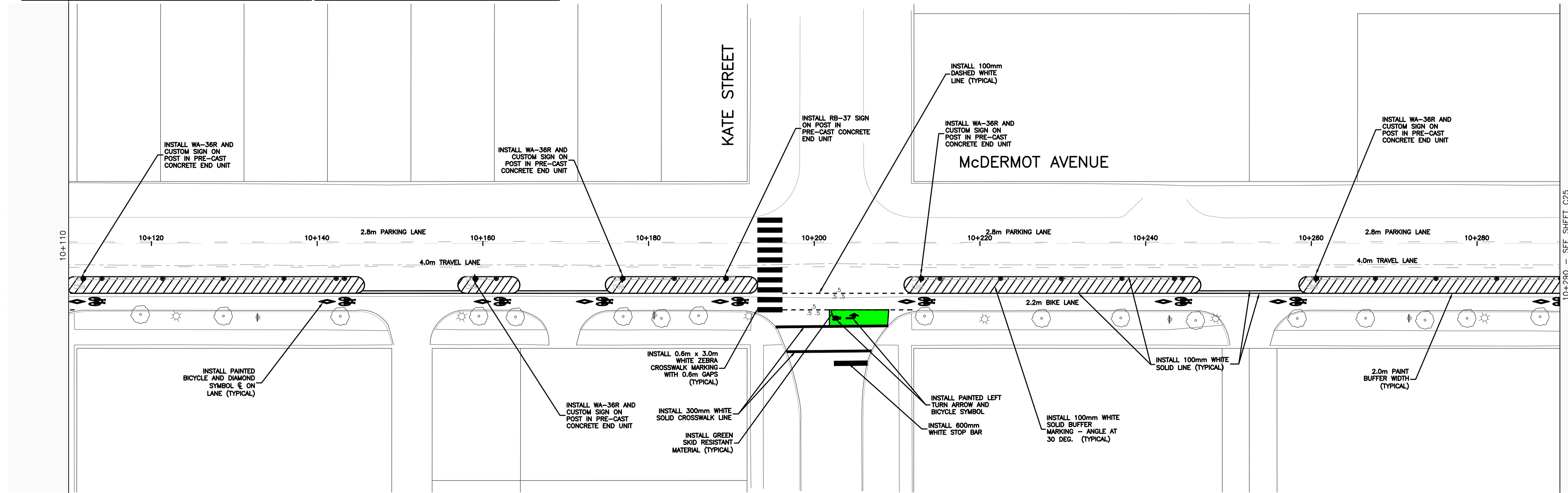


CONTRACTOR TO INSTALL GREEN BIKE LANE TREATMENTS, ALL OTHER PAVEMENT MARKINGS TO BE INSTALLED BY CITY OF WINNIPEG - TRAFFIC SERVICES  
 SEE PLAN DRAWINGS FOR END BARRIER PLACEMENT DWG C02 TO C21 | EXISTING PAVEMENT MARKINGS TO BE REMOVED AS NEEDED

**ENGINEERS**  
**GEOSCIENTISTS**  
**MANITOBA**  
 Certificate of Authorization  
 Urban Systems Ltd.  
 No. 5053

KATE STREET

McDERMOT AVENUE



10+290 - SEE SHEET C25

U:\Projects\_VAN\3354001101\1D-Design\CAD\PRO\SET 1\C24-C36-3354001101-SPM.dwg, C24, 2018-04-10 09:04 pm mnikolich

150 mm W.M.	WATERMAIN	150 mm W.M.	HYDRO	ADJUSTABLE CURB	ADJUSTABLE END UNIT	LOCATION APPROVED UNDERGROUND STRUCTURES
300mm L.D.S.	LAND DRAINAGE SEWER	300mm L.D.S.	M.T.S.	ADJUSTABLE END UNIT	DECORATIVE LIGHT	
250mm W.W.S.	WASTEWATER SEWER	250mm W.W.S.	CONCRETE	DECORATIVE LIGHT	POLYPOST	SUPV. U/G STRUCTURES COMMITTEE DATE
	MANHOLE		ASPHALT			
	CATCH BASIN	235.750	PROPERTY LINE			LOCATION OF UNDERGROUND STRUCTURES AS SHOWN ARE BASED ON THE BEST INFORMATION AVAILABLE. BUT NO GUARANTEE IS GIVEN THAT ALL EXISTING UTILITIES ARE SHOWN OR THAT THE GIVEN LOCATIONS ARE EXACT. CONFIRMATION OF EXISTENCE AND EXACT LOCATION OF ALL SERVICES MUST BE OBTAINED FROM THE INDIVIDUAL UTILITIES BEFORE PROCEEDING WITH CONSTRUCTION.
	CURB INLET	500	SURVEY BAR			
	JUNCTIONS		ELEVATION (35.750)			
	CULVERT		TREE			
	GAS		SIDEWALK DETECTABLE			
			CONCRETE SIDEWALK			
EXISTING	LEGEND - PLAN	PROPOSED	EXISTING	LEGEND - PLAN	PROPOSED	EXISTING
						LEGEND - PROFILE
						PROPOSED

A	60% DETAIL DESIGN	2018-01-22	GS
B	90% DETAIL DESIGN	2018-03-12	GS
C	ISSUED FOR TENDER	2018-03-28	GS
D	ADDENDUM No.1	2018-04-11	GS
NO.	REVISIONS	DATE	BY

<b>URBAN</b> systems	
DESIGNED BY	M. Nikolich
CHECKED BY	G. Smith
DRAWN BY	M. Nikolich
APPROVED BY	G. Propp
HOR. SCALE:	1:250
VERTICAL:	
RELEASED FOR CONSTRUCTION BY:	
DATE	APRIL 11, 2018
DATE	

ENGINEER'S SEAL	
NOT FOR CONSTRUCTION	
CONSULTANT DRAWING NO. 3354.0011.01 C24	

**THE CITY OF WINNIPEG**  
**Winnipeg**  
**PUBLIC WORKS DEPARTMENT**  
**ENGINEERING DIVISION**

McDermot Bannatyne Adjustable Bike Lanes  
 McDermot Avenue  
 Signage & Pavement Markings  
 Station 9+960 to 10+290

SHEET 24 OF 36  
 CAD FILE DRAWING NUMBER C24-C36-3354001101-SPM.DWG  
 CITY DRAWING NUMBER P-3496-24