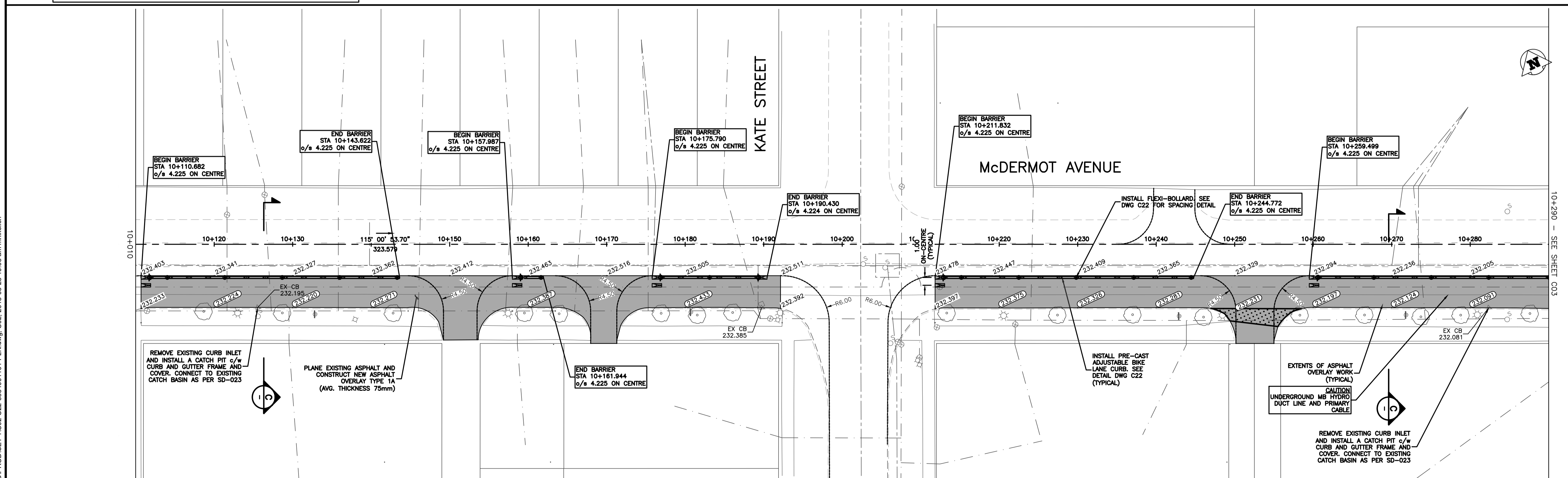


**ENGINEERS
GEOSCIENTISTS
MANITOBA**
Certificate of Authorization
Urban Systems Ltd.
No. 5053

- GENERAL NOTES:**
- DESIGN GRADES ARE TO BE CONFIRMED ONCE PLANING HAS BEEN COMPLETED.
 - ADJUST VALVES TO MATCH FINAL GRADES.
 - ADJUST PAVEMENT MANHOLE AND CATCH BASIN FRAMES 50mm BELOW FINAL GRADE TO ACCOMMODATE A RISER RING FOR FINAL ASPHALT PAVING OPERATIONS.
 - MAINTAIN TRAFFIC AS OUTLINED IN THE TRAFFIC MANAGEMENT SPECIFICATION.
 - RADIi CURB RENEWAL ON INTERSECTING STREETS & BACK LANES TO BE MODIFIED BARRIER CURB AS REQUIRED.
 - CONCRETE REPAIRS TO BE CONFIRMED BY THE CONTRACT ADMINISTRATOR.
 - CURB AND SIDEWALK RENEWAL AS DIRECTED BY THE CONTRACT ADMINISTRATOR.
 - MAINTAIN 25-75mm OF REVEAL ON THE SIGNAL BASES.
 - SEE DWG C22 FOR ADJUSTABLE CURB AND END UNIT DETAILS.

FOR SIGNING AND PAVEMENT MARKING DRAWINGS SEE DWG C23 TO C35



150 mm W.M.	WATERMAIN	150 mm W.M.	HYDRO	ADJUSTABLE CURB	LOCATION APPROVED UNDERGROUND STRUCTURES
300mm L.D.S.	LAND DRAINAGE SEWER	300mm L.D.S.	M.T.S.	ADJUSTABLE END UNIT	
250mm W.W.S.	WASTEWATER SEWER	250mm W.W.S.	CONCRETE ASPHALT	DECORATIVE LIGHT BOLLARD	
	MANHOLE		PROPERTY LINE		
	CATCH BASIN	235.750	SURVEY BAR		
	CURB INLET	500ø	ELEVATION (35.750)		
	JUNCTIONS		TREE		
	CULVERT		SIDEWALK DETECTABLE CONCRETE SIDEWALK		
	GAS		FENCE		
EXISTING	LEGEND - PLAN	PROPOSED	EXISTING	LEGEND - PROFILE	PROPOSED

LOCATION APPROVED UNDERGROUND STRUCTURES

SUPV. U/G STRUCTURES COMMITTEE DATE

NOTE: LOCATION OF UNDERGROUND STRUCTURES AS SHOWN ARE BASED ON THE BEST INFORMATION AVAILABLE. BUT NO GUARANTEE IS GIVEN THAT ALL EXISTING UTILITIES ARE SHOWN OR THAT THE GIVEN LOCATIONS ARE EXACT. CONFIRMATION OF EXISTENCE AND EXACT LOCATION OF ALL SERVICES MUST BE OBTAINED FROM THE INDIVIDUAL UTILITIES BEFORE PROCEEDING WITH CONSTRUCTION.

B.M. ELEV.			
A	60% DETAIL DESIGN	2018-01-25	GS
B	90% DETAIL DESIGN	2018-03-12	GS
C	ISSUED FOR TENDER	2018-03-28	GS
NO.	REVISIONS	DATE	BY

URBAN systems

DESIGNED BY: M. Nikolic
CHECKED BY: G. Smith
DRAWN BY: M. Nikolic
APPROVED BY: G. Propp
HOR. SCALE: 1:250
RELEASED FOR CONSTRUCTION BY:
VERTICAL:

DATE: MARCH 28, 2018

ENGINEER'S SEAL

NOT FOR CONSTRUCTION

CONSULTANT DRAWING NO. 3354.0011.01 C02

THE CITY OF WINNIPEG
PUBLIC WORKS DEPARTMENT
ENGINEERING DIVISION

McDermot Bannatyne Adjustable Bike Lanes
McDermot Avenue
Plan
Station 9+980 to 10+290

SHEET 02 OF 36
CAD FILE DRAWING NUMBER C02-C22-3354001101-PLN.DWG
CITY DRAWING NUMBER P-3496-02

U:\Projects_VAN\3354001101\1D-Design\CAD\PRO\101-PLN.dwg, C02, 2018-03-28 10:03 am mnikolic