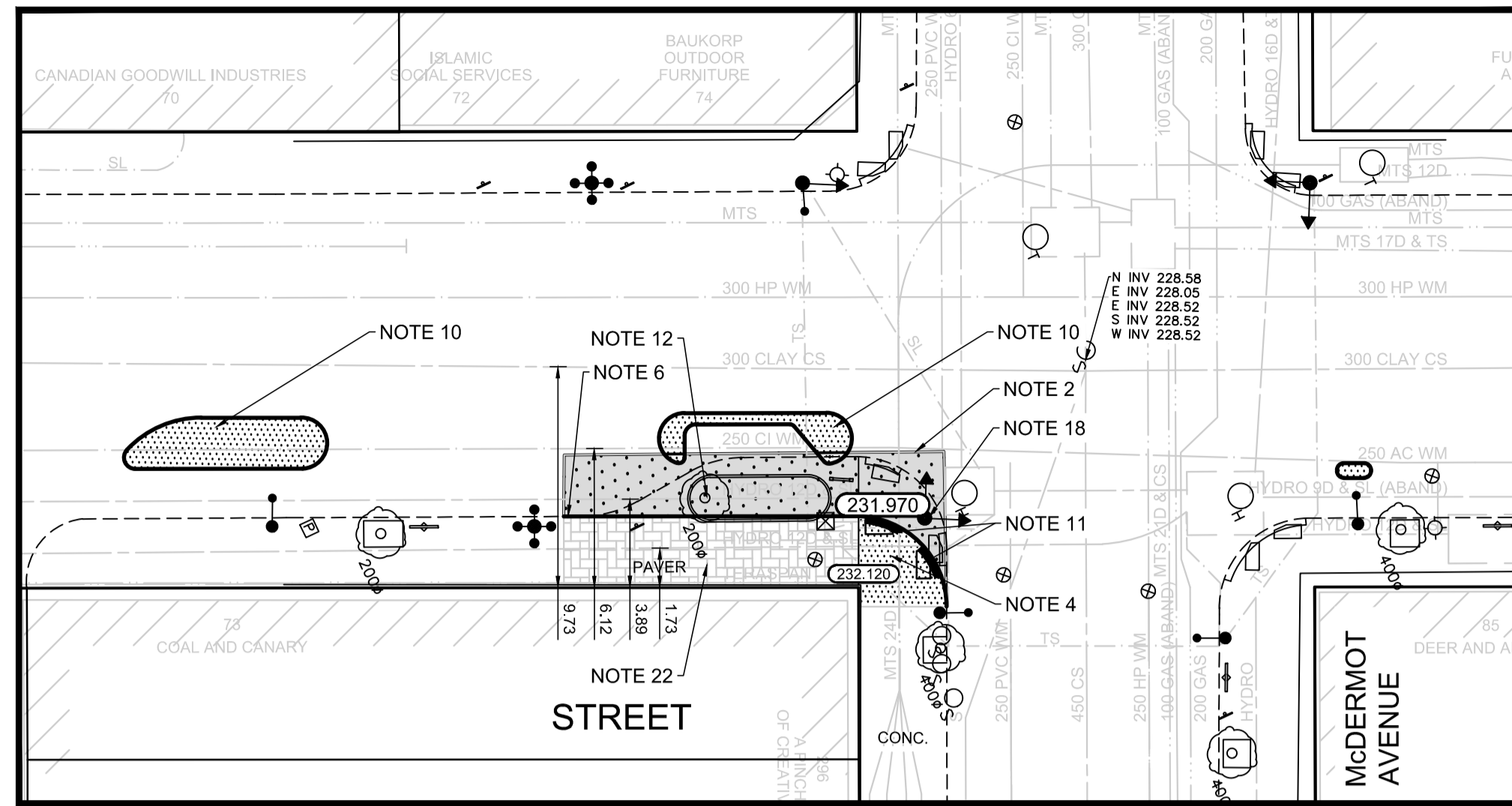
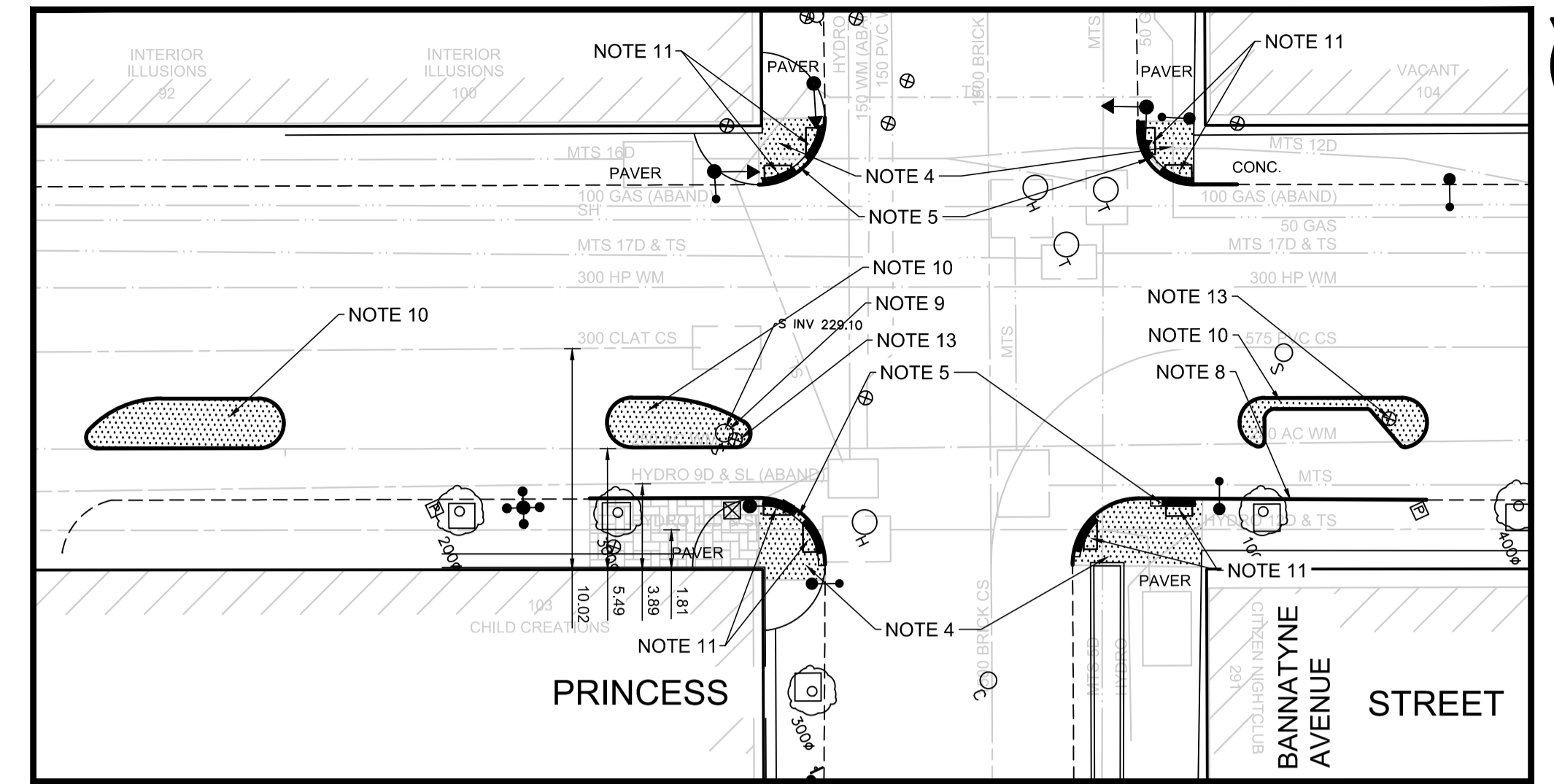


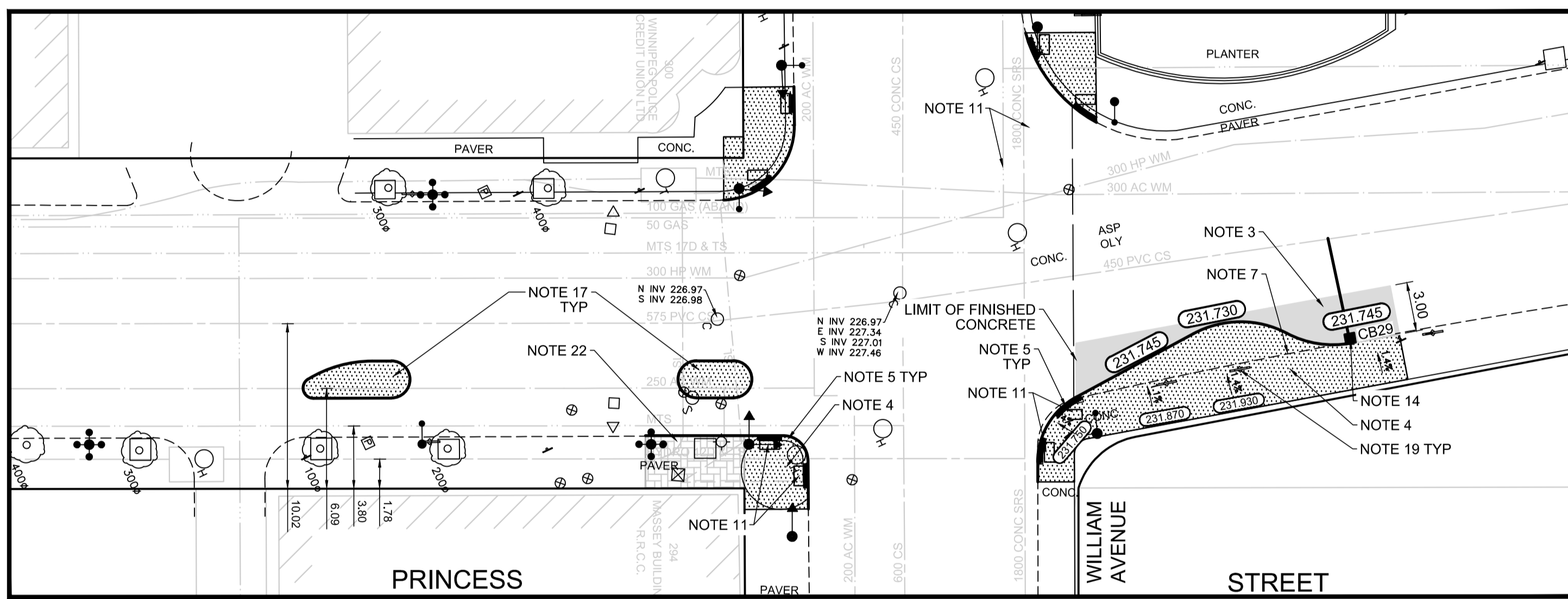
PLAN
Scale 1:250



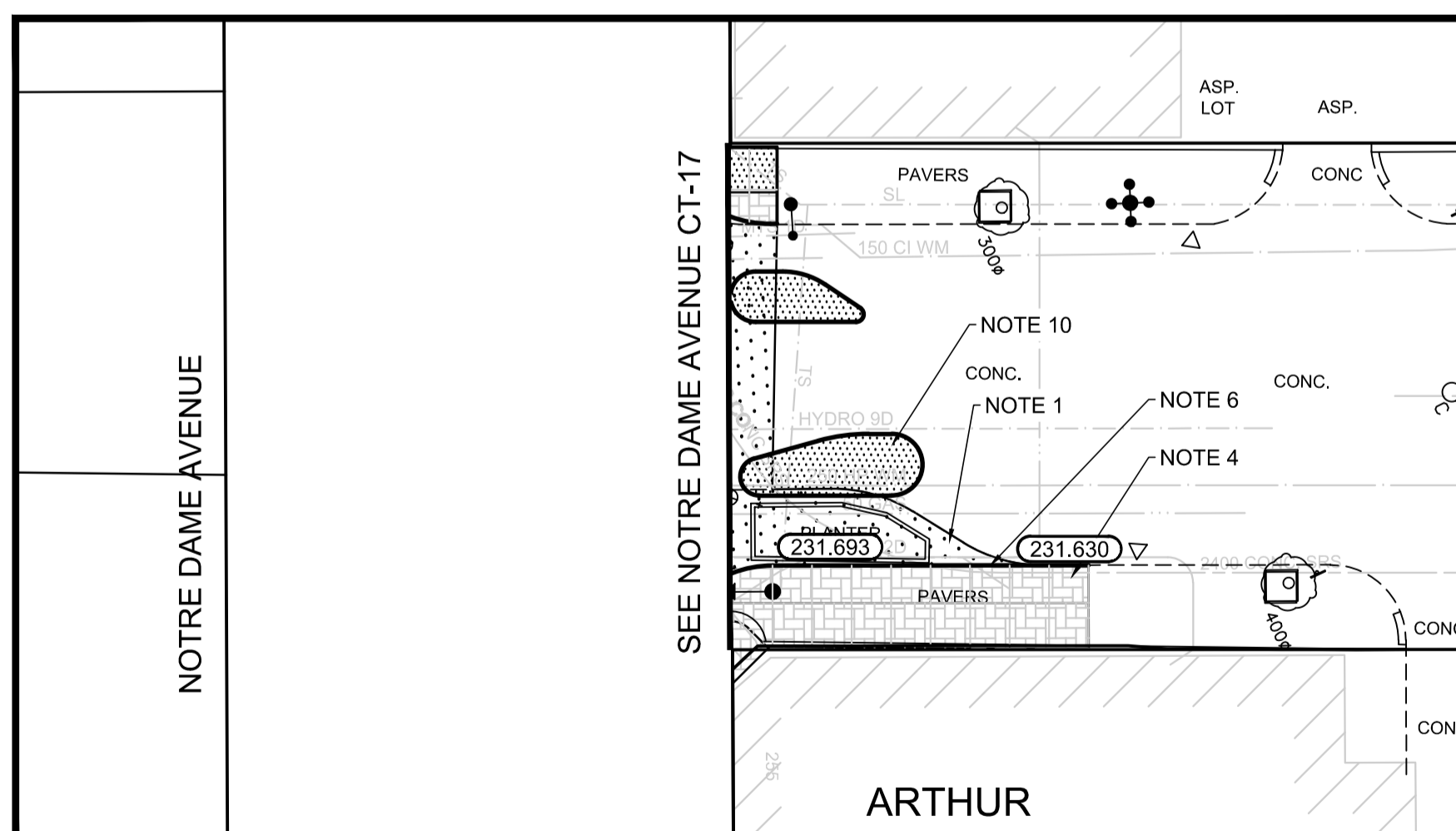
PLAN
Scale 1:250



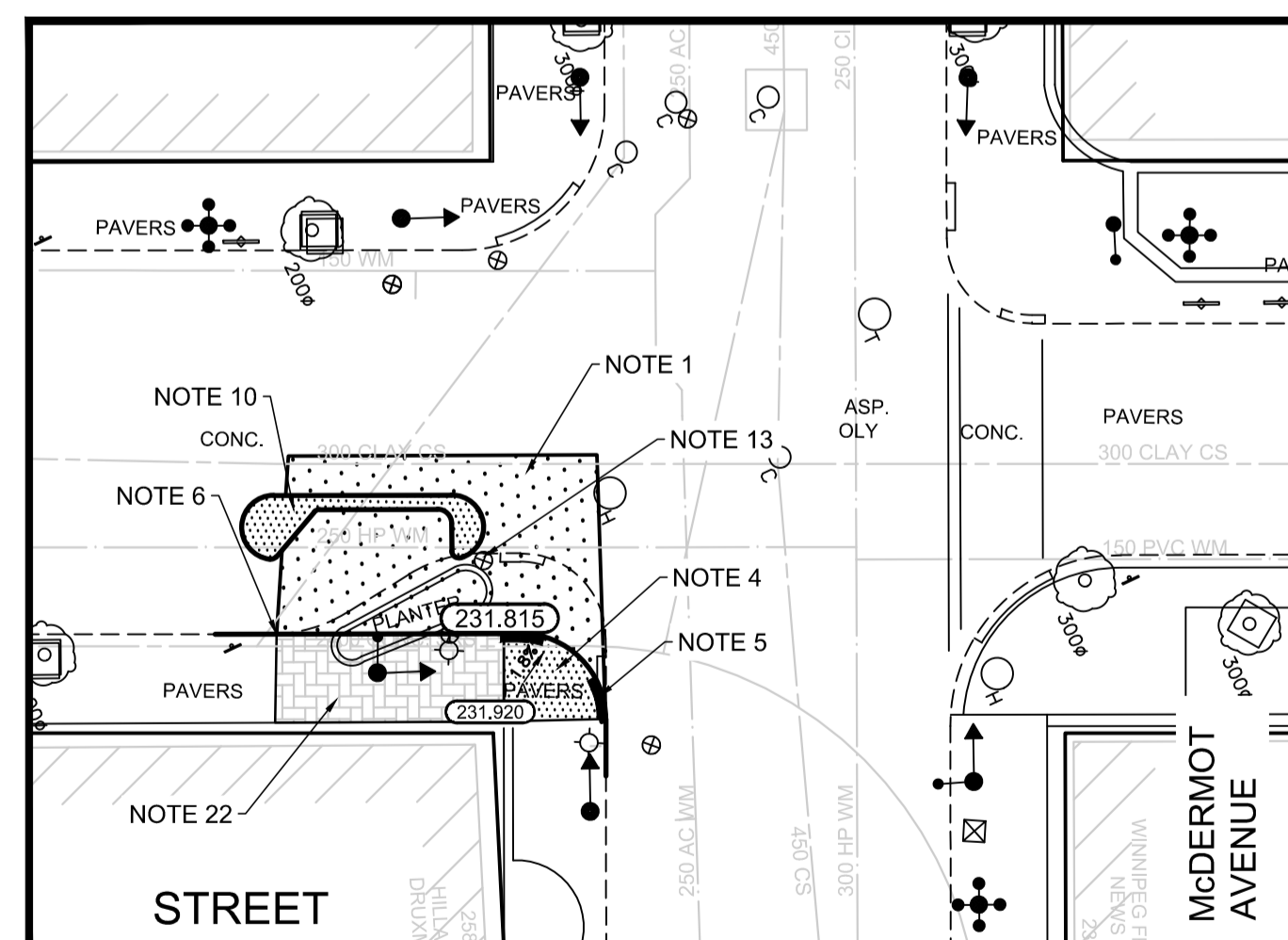
PLAN
Scale 1:250



PLAN
Scale 1:250



PLAN
Scale 1:250



PLAN
Scale 1:250

CB & CP TABLE						
DESCRIPTION	RIM ELEV.	INVERT			CONNECTION	LEAD
		EAST	WEST	SEWER		
CB29	231.745	230.145		230.145	EX. 600 CS	7.0m-DRAIN CONN. PIPE

- REFERENCE NOTES**
- PAVEMENT DIMENSIONS ARE TO BACK OF CURB
 - BASELINE IS CENTRELINE OF RIGHT-OF-WAY
 - PROPERTY LINES OBTAINED FROM THE CITY OF WINNIPEG L.B.I.S. AND SCALE FACTOR WAS NOT APPLIED
 - REFER TO AECOM FIELD BOOK NO. 4987
 - REFER TO DWGS CT-38 FOR STREETSCAPING ELEMENTS.
 - CATCH BASIN CONNECTIONS TO SEWER DESIGNED TO MAINTAIN PRE-CONSTRUCTION CAPACITY BY CATCH BASIN LEAD RESTRICTION AS INDICATED ON THE DRAWINGS. ADDITIONAL OR MODIFIED CONNECTIONS TO THE SEWER SYSTEM BEYOND THOSE INDICATED ON THE DRAWINGS REQUIRE REVIEW AND WRITTEN APPROVAL BY THE CONTRACT ADMINISTRATOR.

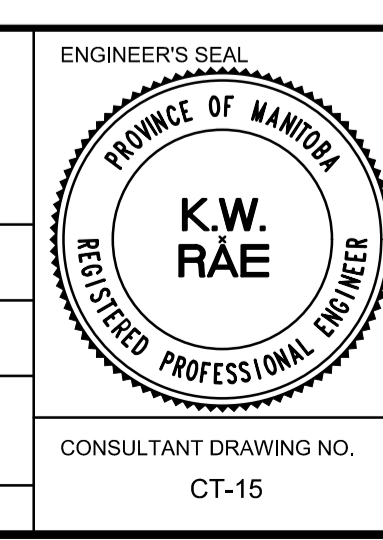
- CONSTRUCTION NOTES:**
- SAW CUT AND REMOVE EXISTING PAVEMENT AND CONSTRUCT NEW 200mm REINFORCED CONCRETE PAVEMENT
 - SAW CUT AND REMOVE EXISTING PAVEMENT AND CONSTRUCT NEW 200mm REINFORCE CONCRETE PAVEMENT c/w 65mm TYPE 1A ASPHALT OVERLAY
 - PLANE EXISTING ASPHALT AND CONSTRUCT NEW ASPHALT OVERLAY TYPE 1A (AVG. THICKNESS 50mm)
 - REMOVE EXISTING PAVER SIDEWALK AND CONSTRUCT NEW 100mm SIDEWALK c/w PAVING STONE BAND (SEE DETAIL 1, CT-43)
 - RENEW EXISTING MONOLITHIC CURB RAMP (10mm HT. INTEGRAL)
 - CONSTRUCT NEW MODIFIED BARRIER CURB (150mm AVG. HT. REVEAL SEPARATE)
 - REMOVE EXISTING BARRIER CURB
 - RENEW EXISTING BARRIER CURB (125mm AVG. HT. REVEAL)
 - ADJUST EXISTING CATCH BASIN/MANHOLE TO GRADE
 - CONSTRUCT NEW MONOLITHIC CONCRETE MEDIAN
 - INSTALL NEW DETECTABLE SURFACE WARNING TILES
 - REMOVE EXISTING TREE
 - ADJUST EXISTING VALVE BOX TO GRADE
 - INSTALL NEW CATCHBASIN c/w CURB AND GUTTER INLET, CONNECT TO EXISTING SEWER.
 - CONSTRUCT NEW CONCRETE SIDEWALK
 - REMOVE EXISTING PAVING STONES AND INSTALL NEW PAVING STONES ON LEAN CONCRETE BASE
 - CONSTRUCT NEW CONCRETE MEDIAN WITH PAVERS
 - EXISTING TRAFFIC SIGNAL POLE TO BE RELOCATED (BY OTHERS)
 - REMOVE AND REINSTALL EXISTING BIKE RACK
 - RELOCATE EXISTING HYDRANT
 - REMOVE EXISTING CONC. SIDEWALK WITH PAVER BANDS AND CONSTRUCT NEW CONCRETE SIDEWALK WITH PAVING STONE BAND (SEE DETAIL 1, CT-43)
 - REGRADE EXISTING PAVING STONE

METRIC
WHOLE NUMBERS INDICATE MILLIMETRES
DECIMALIZED NUMBERS INDICATE METRES



B.M. ELEV.	DATE	BY	DATE	BY

DESIGNED BY	KWR	CHECKED BY	KWR
DRAWN BY	PAAP	APPROVED BY	KWR
HOR. SCALE:	1:250	RELEASED FOR CONSTRUCTION BY:	
VERTICAL:		DATE	2017/11/27



THE CITY OF WINNIPEG
PUBLIC WORKS DEPARTMENT
ENGINEERING DIVISION

DOWNTOWN BIKE LANE SYSTEM
AND STREET IMPROVEMENT

GRADING PLAN
PRINCESS STREET AND ARTHUR STREET
NOTRE DAME AVENUE TO WILLIAM AVENUE

CITY DRAWING NUMBER	P-3495-15
SHEET	15 OF 45