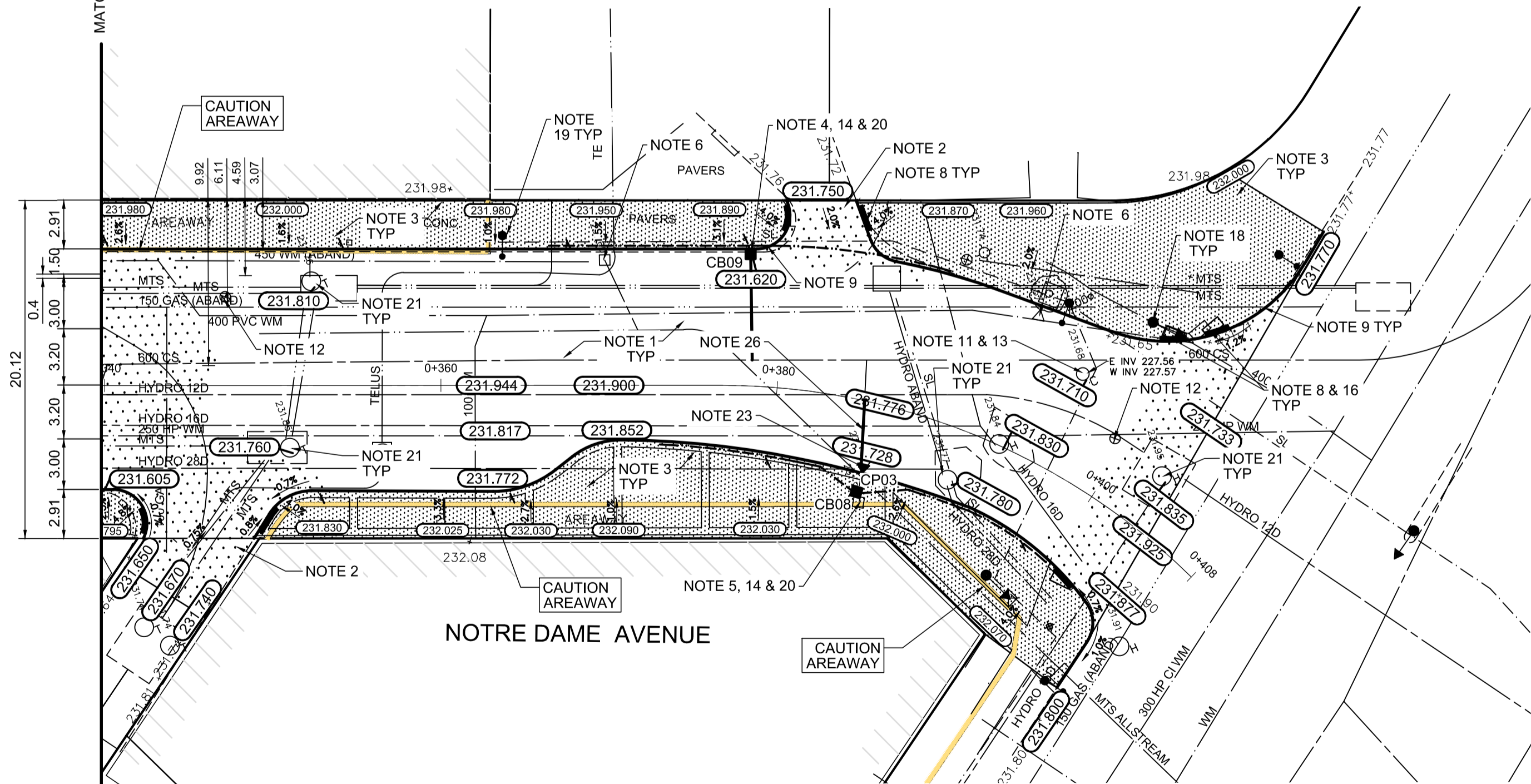
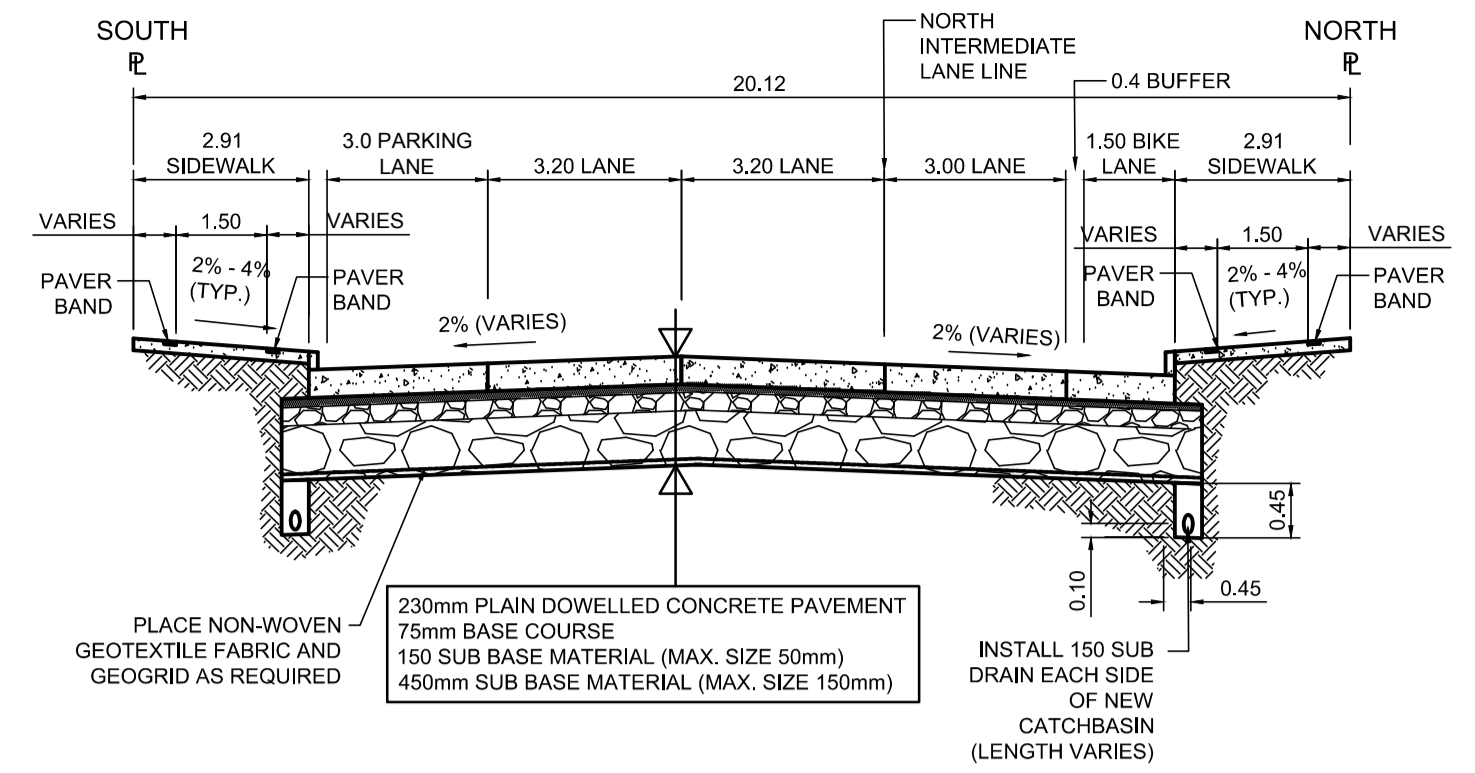


PROFILE
Scale H=1:250 V=1:10



PLAN
Scale 1:250



TYPICAL SECTION
Scale NTS

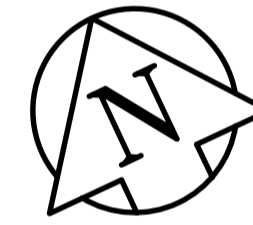
DESCRIPTION	RIM ELEV.	INVERT				CONNECTION	LEAD
		EAST	WEST	NORTH	SOUTH		
CB08	231.940			230.340		EX. LEAD	
CP03	231.728			230.730		NEW CB	1.5m DRAIN CONN. PIPE
CB09	231.620			230.020	227.59±	600 CS	6.6m-250Ø @ 2% Min

REFERENCE NOTES

- A. PAVEMENT DIMENSIONS ARE TO BACK OF CURB
- B. BASELINE IS PROPOSED CENTRELANE LINE
- C. PROPERTY LINES OBTAINED FROM THE CITY OF WINNIPEG L.B.I.S., AND SCALE FACTOR WAS NOT APPLIED
- D. REFER TO AECOM FIELD BOOK NO. 4987
- E. REFER TO DWGS CT-39 FOR STREETSCAPING ELEMENTS.
- F. CATCH BASIN CONNECTIONS TO SEWER DESIGNED TO MAINTAIN PRE-CONSTRUCTION CAPACITY BY CATCH BASIN LEAD RESTRICTION AS INDICATED ON THE DRAWINGS. ADDITIONAL OR MODIFIED CONNECTIONS TO THE SEWER SYSTEM BEYOND THOSE INDICATED ON THE DRAWINGS REQUIRE REVIEW AND WRITTEN APPROVAL BY THE CONTRACT ADMINISTRATOR.

CONSTRUCTION NOTES

1. REMOVE EXISTING PAVEMENT INCLUDING CONCRETE STREETCAR BEDDING, RAILS AND WOOD TIES, AND CONSTRUCT NEW 230mm PLAIN DOWELLED CONCRETE PAVEMENT c/w 180mm BARRIER CURB (SEPARATE)
2. CONSTRUCT NEW 200mm REINFORCED CONCRETE PAVEMENT
3. REMOVE EXISTING CONCRETE SIDEWALK/PAVER STONE SIDEWALK AND CONSTRUCT NEW 100mm SIDEWALK c/w PAVING STONE BANDS (SEE DETAIL 1, CT-43) CONTRACTOR TO SAW CUT AT PROPERTY LINE FULL LENGTH OF PROJECT
4. INSTALL NEW CURB AND GUTTER INLET c/w CATCHBASIN (SD024/SD025). CONNECT NEW 250mm LEAD TO EXISTING LEAD, EXISTING COMBINED SEWER OR MANHOLE
5. REMOVE EXISTING CATCHBASIN AND INSTALL NEW CURB AND GUTTER INLET c/w CATCHBASIN (SD-024/SD-025). CONNECT NEW 250mm LEAD TO EXISTING LEAD, EXISTING COMBINED SEWER OR MANHOLE
6. REMOVE EXISTING CATCHBASIN AND ABANDON EXISTING LEAD
7. REMOVE EXISTING FRAME AND COVER AND INSTALL NEW FRAME AND SOLID COVER (AP-006 & AP-007)
8. CONSTRUCT NEW MONOLITHIC CURB RAMP (10mm HT. INTEGRAL)
9. CONSTRUCT NEW MODIFIED BARRIER CURB (180mm HT. INTEGRAL) AS PER SD-203B AT ALL STREET/LANE INTERSECTION RADII
10. REMOVE EXISTING CURB AND GUTTER INLET AND LEAD
11. ADJUST EXISTING CATCHBASIN/MANHOLE FRAME AND COVER
12. ADJUST EXISTING WATERMAIN VALVE BOX TO GRADE
13. INSTALL NEW 50mm CAST IRON RISER RING
14. INSTALL 150mm SUBDRAIN 12m ON EACH SIDE OF CATCHBASIN UNLESS OTHERWISE NOTED
15. ADJUST EXISTING CURB STOP TO GRADE
16. INSTALL NEW DETECTABLE SURFACE WARNING TILES
17. PLACE ASPHALT PAVEMENT (TYPE 1A)
18. EXISTING TRAFFIC SIGNALS POLE TO BE RELOCATED (BY OTHERS)
19. EXISTING STREET LIGHT POLE TO BE RELOCATED (BY OTHERS)
20. INSTALL FLOW RESTRICTOR PIPE 200mm PVC SDR 35 CENTER RESTRICTOR PIPE IN CB LEAD (SD-122)
21. ADJUST MANITOBA HYDRO/ MTS MANHOLES (BY OTHERS)
22. INSULATE WATER SERVICES UNDER ROADWAY EXCAVATION AS PER (SD-18)
23. REMOVE EXISTING CATCHPIT, INSTALL NEW CURB AND GUTTER INLET c/w CATCH PIT (SD-023) AND CONNECT NEW 250mm LEAD TO NEW CATCH BASIN
24. CONSTRUCT NEW MONOLITHIC CONCRETE MEDIAN
25. REMOVE/STORE/REINSTALL EXISTING PRECAST TREE VAULT COVERS AND PROTECT EXISTING TREE VAULT COVERS AND PROTECT EXISTING TREE VAULT DURING CONSTRUCTION
26. REPAIR 4.0m OF CATCHBASIN LEAD



METRIC
WHOLE NUMBERS INDICATE MILLIMETRES
DECIMALIZED NUMBERS INDICATE METRES

150 mm W.M.	150 mm W.M.	HYDRO	PROPERTY LINE	PROPOSED	EXISTING	LEGEND - PROFILE	PROPOSED
HYDRANT	MANHOLE	M.T.S.	SURVEY BAR	WEST GUTTER	WEST GUTTER	WEST GUTTER	WEST GUTTER
VALVE	CATCH BASIN	CONCRETE	ELEVATION (35.750)	EAST GUTTER	EAST GUTTER	EAST GUTTER	EAST GUTTER
LAND DRAINAGE SEWER	CATCH PIT	ASPHALT	TREE	N/W PROPERTY LINE	N/W PROPERTY LINE	N/W PROPERTY LINE	N/W PROPERTY LINE
WASTEWATER SEWER	TRAFFIC SIGNAL POLE	PROPERTY LINE	SIDEWALK RAMP	S/E PROPERTY LINE	S/E PROPERTY LINE	S/E PROPERTY LINE	S/E PROPERTY LINE
	STREET LIGHT	CONCRETE SIDEWALK	CONCRETE SIDEWALK				
	GAS	FENCE	FENCE				

LOCATION APPROVED UNDERGROUND STRUCTURES

SUPV. U/G STRUCTURES COMMITTEE DATE

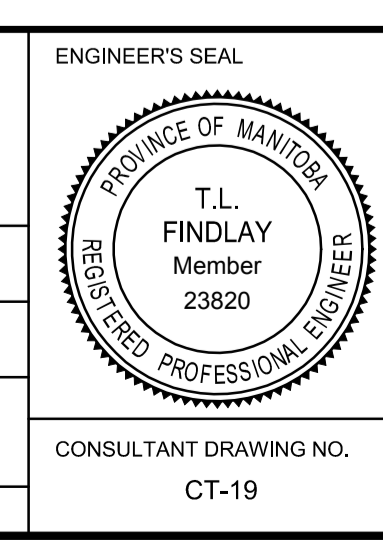
NOTE:
LOCATION OF UNDERGROUND STRUCTURES AS SHOWN ARE BASED ON THE BEST INFORMATION AVAILABLE, BUT NO GUARANTEE IS GIVEN THAT ALL EXISTING UTILITIES ARE SHOWN OR THAT THE GIVEN LOCATIONS ARE EXACT. CONFIRMATION OF EXISTENCE AND EXACT LOCATION OF ALL SERVICES MUST BE OBTAINED FROM THE INDIVIDUAL UTILITIES BEFORE PROCEEDING WITH CONSTRUCTION.

B.M. 38 - 035
ELEV. 232.286

S.W. Cor. Notre Dame Ave. & Hargrave St., Tbl. in N. Conc. found. No. 440 Hargrave St., 1m W. & 0.3 m below Tyndall Stone of N.E. Cor. of Bldg.

AECOM

DESIGNED BY	TLF	CHECKED BY	KWR
DRAWN BY	PAAP	APPROVED BY	
HOR. SCALE:	1:250	RELEASED FOR CONSTRUCTION BY:	
VERTICAL:	1:10		
NO.	REVISIONS	DATE	DATE
0	ISSUED FOR TENDER	2018/02/26	KWR
B	RE-ISSUED FOR REVIEW	2018/01/29	KWR
A	ISSUED FOR REVIEW	2017/11/27	KWR
		DATE	2017/11/27



THE CITY OF WINNIPEG
PUBLIC WORKS DEPARTMENT
ENGINEERING DIVISION

DOWNTOWN BIKE LANE SYSTEM
AND STREET IMPROVEMENT

PLAN/PROFILE GRADING PLAN
NOTRE DAME AVENUE
STATION 0+340 TO PORTAGE AVENUE

CITY DRAWING NUMBER P-3495-19
SHEET 19 OF 45

CONSULTANT DRAWING NO. CT-19