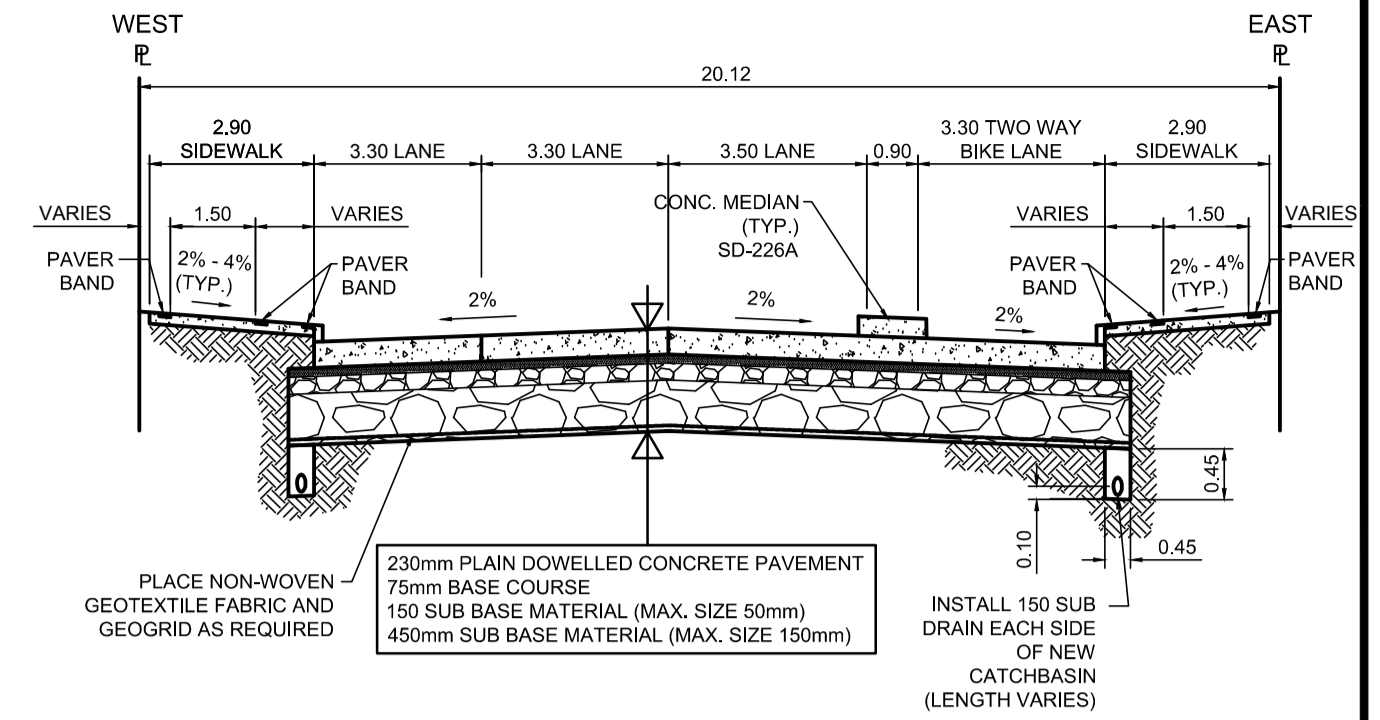


PROFILE
Scale H=1:250 V=1:10



TYPICAL SECTION
Scale NTS

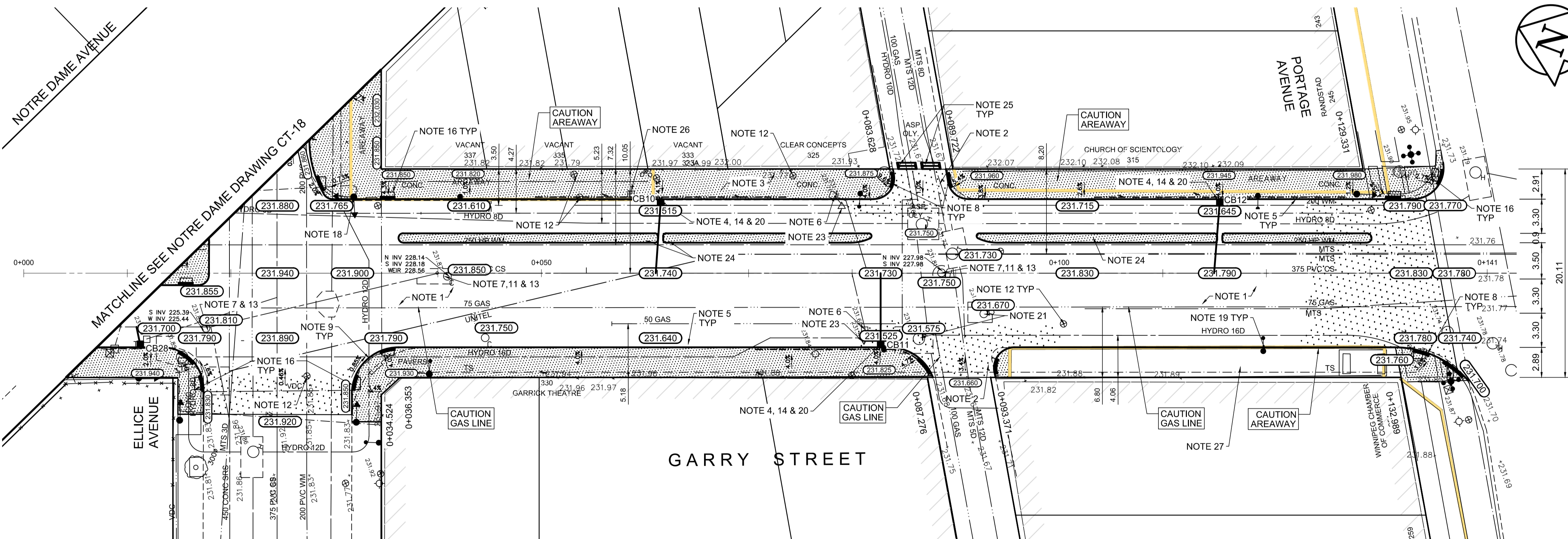
DESCRIPTION	RIM ELEV.	INVERT				CONNECTION	LEAD	
		EAST	WEST	NORTH	SOUTH			
CB10	231.515		229.865			228.09±	375 CS	7.0m-2500 @ 2% Min
CB11	231.525	229.875				228.00±	375 CS	7.0m-2500 @ 2% Min
CB12	231.645		229.995			227.77±	375 CS	7.0m-2500 @ 2% Min
CB28	231.700	230.050				225.44±	1250 SRS	2.0m-2500 @ 2% Min

REFERENCE NOTES

- PAVEMENT DIMENSIONS ARE TO BACK OF CURB
- BASELINE IS CENTRELINE OF RIGHT-OF-WAY
- PROPERTY LINES OBTAINED FROM THE CITY OF WINNIPEG L.B.I.S., AND SCALE FACTOR WAS NOT APPLIED
- REFER TO AECOM FIELD BOOK NO. 4987
- REFER TO DWGS CT-40 FOR STREETSCAPING ELEMENTS.
- CATCH BASIN CONNECTIONS TO SEWER DESIGNED TO MAINTAIN PRE-CONSTRUCTION CAPACITY BY CATCH BASIN LEAD RESTRICTION AS INDICATED ON THE DRAWINGS. ADDITIONAL OR MODIFIED CONNECTIONS TO THE SEWER SYSTEM BEYOND THOSE INDICATED ON THE DRAWINGS REQUIRE REVIEW AND WRITTEN APPROVAL BY THE CONTRACT ADMINISTRATOR.

CONSTRUCTION NOTES

- REMOVE EXISTING PAVEMENT INCLUDING CONCRETE STREETCAR BEDDING, RAILS AND WOOD TIES, AND CONSTRUCT NEW 230mm PLAIN DOWELED CONCRETE PAVEMENT
- CONSTRUCT NEW 200mm REINFORCED CONCRETE PAVEMENT
- REMOVE EXISTING CONCRETE SIDEWALK AND CONSTRUCT NEW 100mm SIDEWALK c/w PAVING STONE BANDS (REFER TO DETAIL 2, CT-43) CONTRACTOR TO SAW CUT AT PROPERTY LINE FULL LENGTH OF PROJECT
- INSTALL NEW CURB AND GUTTER INLET c/w CATCHBASIN (SD024). CONNECT NEW 250mm LEAD TO EXISTING COMBINED SEWER
- CONSTRUCT NEW BARRIER CURB (180mm HT. SEPARATE)
- REMOVE EXISTING CATCHBASIN AND ABANDON EXISTING LEAD
- REMOVE EXISTING FRAME AND COVER AND INSTALL NEW FRAME AND SOLID COVER (AP-006 & AP-007)
- CONSTRUCT NEW MONOLITHIC CURB RAMP (10mm HT. INTEGRAL)
- CONSTRUCT NEW MODIFIED BARRIER CURB (180mm HT. INTEGRAL) AS PER SD-2038 AT ALL STREET/LANE INTERSECTION RADII
- REMOVE EXISTING CURB AND GUTTER INLET AND LEAD
- ADJUST EXISTING CATCHBASIN/MANHOLE FRAME AND COVER
- ADJUST EXISTING WATERMAIN VALVE BOX TO GRADE
- INSTALL NEW 50mm CAST IRON RISER RING
- INSTALL 150mm SUBDRAIN 12m ON EACH SIDE OF CATCHBASIN UNLESS OTHERWISE NOTED
- ADJUST EXISTING CURB STOP TO GRADE
- INSTALL NEW DETECTABLE SURFACE WARNING TILES
- PLACE ASPHALT PAVEMENT (TYPE 1A)
- EXISTING TRAFFIC SIGNALS POLE TO BE RELOCATED (BY OTHERS)
- EXISTING STREET LIGHT POLE TO BE RELOCATED (BY OTHERS)
- INSTALL FLOW RESTRICTOR PIPE 200mm PVC SDR 35 CENTER RESTRICTOR PIPE IN CB LEAD (SD-122)
- ADJUST MANITOBA HYDRO/ MTS MANHOLES (BY OTHERS)
- INSULATE WATER SERVICES UNDER ROADWAY EXCAVATION AS PER (SD-18)
- REMOVE EXISTING CATCHPIT
- CONSTRUCT NEW MONOLITHIC CONCRETE MEDIAN
- CONSTRUCT NEW ASPHALT SPEED BUMPS
- REMOVE EXISTING PARKING PAY STATIONS (BY OTHERS).
- AREAWAY STRUCTURAL REPORT UNDERWAY FOR 259 PORTAGE AVENUE, NO WORK OVER AREAWAY



PLAN
Scale 1:250

EXISTING	LEGEND - PLAN	PROPOSED	EXISTING	LEGEND - PLAN	PROPOSED	EXISTING	LEGEND - PROFILE	PROPOSED
150 mm W.M.	WATERMAIN	150 mm W.M.	HYDRO	CONCRETE	PROPERTY LINE	— x —	PROFILE	—
300mm L.D.S.	LAND DRAINAGE SEWER	300mm L.D.S.	M.T.S.	ASPHALT	SURVEY BAR	—	WEST GUTTER	—
250mm W.W.S.	WASTEWATER SEWER	250mm W.W.S.	CONCRETE	CONCRETE	ELEVATION (35.750)	—	EAST GUTTER	—
○	MANHOLE	●	PROPERTY LINE	ASPHALT	TREE	—	N/W PROPERTY LINE	—
□	CATCH BASIN	■	SURVEY BAR	CONCRETE	ELEVATION	—	S/E PROPERTY LINE	—
▽	CATCH PIT	▼	ELEVATION	ASPHALT	TREE	—		
↑	TRAFFIC SIGNAL POLE	↑	TREE	CONCRETE	SIDEWALK RAMP	—		
↑	STREET LIGHT	↑	SIDEWALK RAMP	CONCRETE	CONCRETE SIDEWALK	—		
—	GAS	—	CONCRETE SIDEWALK	CONCRETE	FENCE	—		

LOCATION APPROVED UNDERGROUND STRUCTURES

SUPV. U/G STRUCTURES COMMITTEE DATE

NOTE:
LOCATION OF UNDERGROUND STRUCTURES AS SHOWN ARE BASED ON THE BEST INFORMATION AVAILABLE, BUT NO GUARANTEE IS GIVEN THAT ALL EXISTING UTILITIES ARE SHOWN OR THAT THE GIVEN LOCATIONS ARE EXACT. CONFIRMATION OF EXISTENCE AND EXACT LOCATION OF ALL SERVICES MUST BE OBTAINED FROM THE INDIVIDUAL UTILITIES BEFORE PROCEEDING WITH CONSTRUCTION.

NO.	REVISIONS	DATE	BY
0	ISSUED FOR TENDER	2018/02/26	KWR
B	RE-ISSUED FOR REVIEW	2018/01/29	KWR
A	ISSUED FOR REVIEW	2017/11/27	KWR

AECOM

DESIGNED BY: KWR
CHECKED BY: KWR

DRAWN BY: PAAP
APPROVED BY: KWR

HOR. SCALE: 1:250
VERTICAL: 1:10

RELEASED FOR CONSTRUCTION BY: KWR

DATE: 2017/11/27

ENGINEER'S SEAL

PROVINCE OF MANITOBA

K.W. RAE

REGISTERED PROFESSIONAL ENGINEER

CONSULTANT DRAWING NO. CT-20

THE CITY OF WINNIPEG

PUBLIC WORKS DEPARTMENT

ENGINEERING DIVISION

DOWNTOWN BIKE LANE SYSTEM AND STREET IMPROVEMENT

PLAN/PROFILE GRADING PLAN

GARRY STREET

NOTRE DAME AVENUE TO PORTAGE AVENUE

CITY DRAWING NUMBER P-3495-20

SHEET 20 OF 45

AECOM

Certificate of Authorization

AECOM Canada Ltd.

No. 4671 Date: _____

METRIC

WHOLE NUMBERS INDICATE MILLIMETRES

DECIMALIZED NUMBERS INDICATE METRES