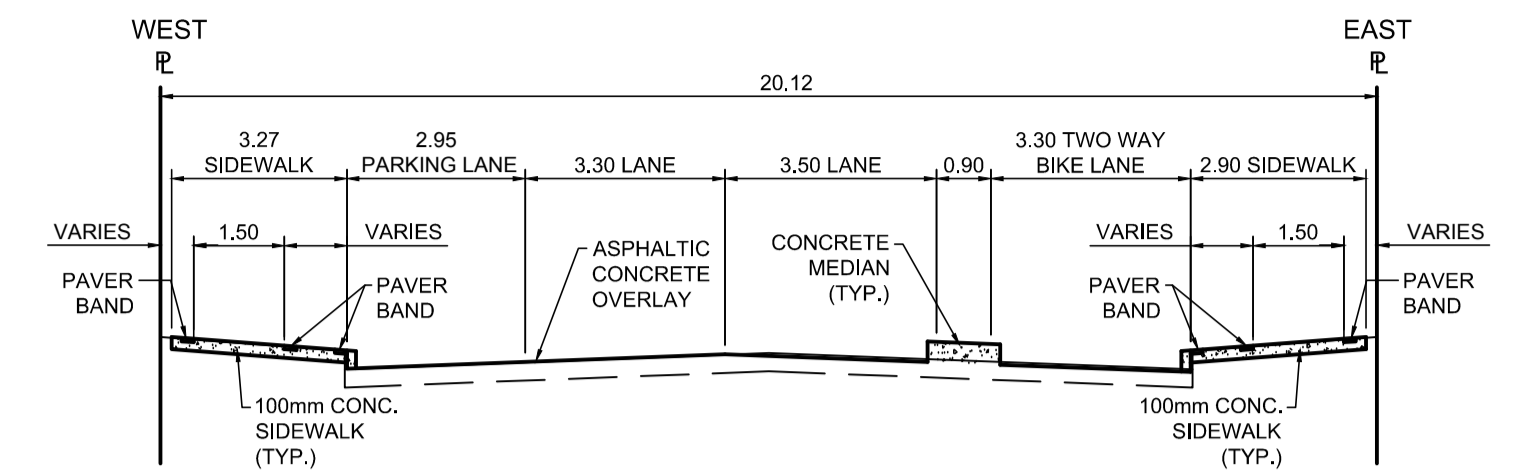


PROFILE
Scale H=1:250 V=1:10



TYPICAL SECTION
Scale NTS

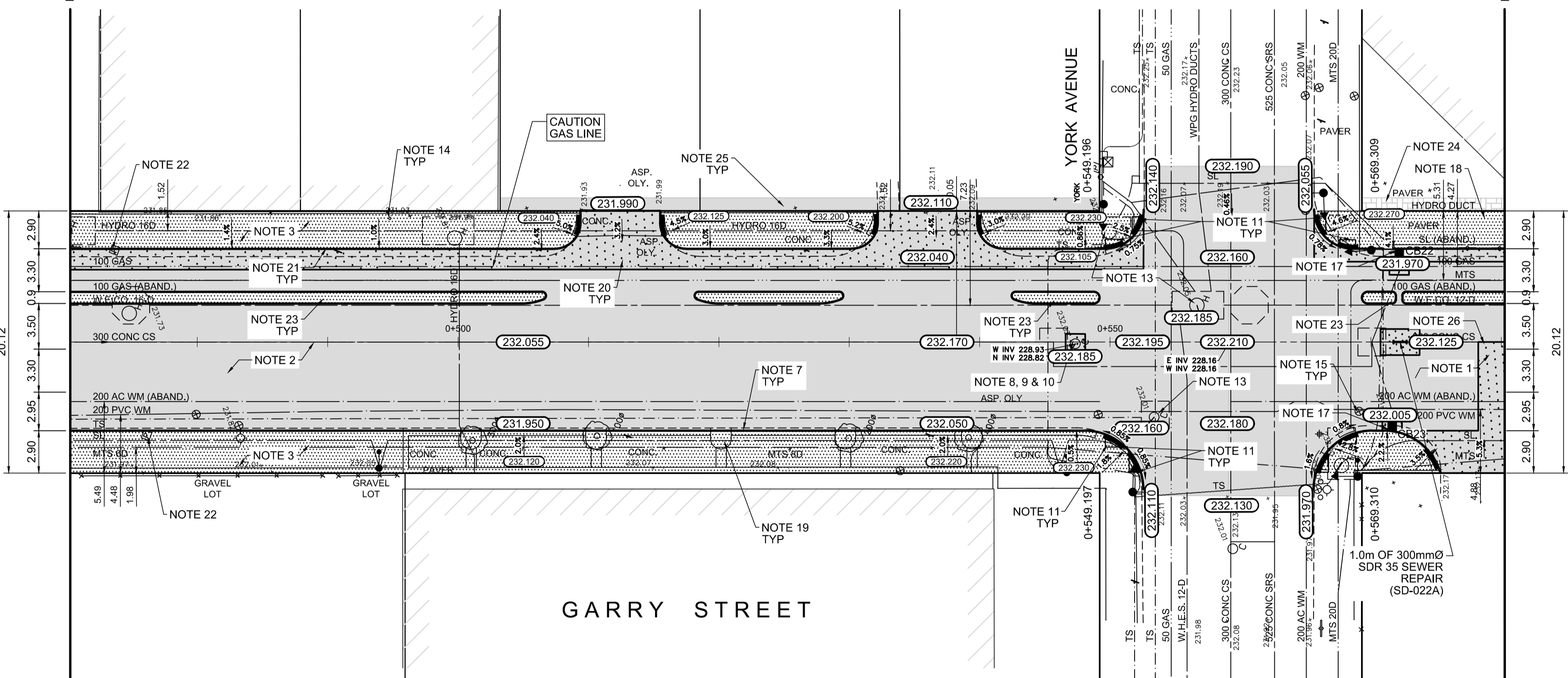
CB & CP TABLE							
DESCRIPTION	RIM ELEV.	INVERT			SEWER	CONNECTION	LEAD
		EAST	WEST	NORTH			
CB22	231.970		230.32		228.015	EX. LEAD	
CB23	232.005		231.005			EX. LEAD	

REFERENCE NOTES

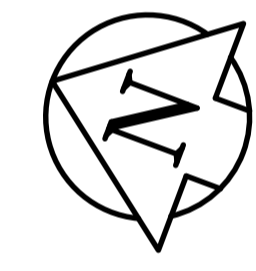
- A. PAVEMENT DIMENSIONS ARE TO BACK OF CURB
- B. BASELINE IS CENTRELINE OF RIGHT-OF-WAY
- C. PROPERTY LINES OBTAINED FROM THE CITY OF WINNIPEG L.B.I.S., AND SCALE FACTOR WAS APPLIED
- D. REFER TO AECOM FIELD BOOK NO. 4987
- E. REFER TO DWGS CT-41 FOR STREETSCAPING ELEMENTS.
- F. CATCH BASIN CONNECTIONS TO SEWER DESIGNED TO MAINTAIN PRE-CONSTRUCTION CAPACITY BY CATCH BASIN LEAD RESTRICTION AS INDICATED ON THE DRAWINGS. ADDITIONAL OR MODIFIED CONNECTIONS TO THE SEWER SYSTEM BEYOND THOSE INDICATED ON THE DRAWINGS REQUIRE REVIEW AND WRITTEN APPROVAL BY THE CONTRACT ADMINISTRATOR.

CONSTRUCTION NOTES:

1. PLANE EXISTING ASPHALT AND CONSTRUCT NEW ASPHALTIC PAVEMENT OVERLAY TYPE 1A (AVERAGE THICKNESS 85mm)
2. PLANE EXISTING ASPHALT AND CONSTRUCT NEW ASPHALTIC PAVEMENT OVERLAY (AVERAGE THICKNESS 50mm)
3. REMOVE EXISTING CONCRETE SIDEWALK AND CONSTRUCT NEW 100mm SIDEWALK c/w PAVING STONE BAND (SEE DETAIL 2, CT-43)
4. RENEW EXISTING MONOLITHIC CURB RAMP (10mm HT. INTEGRAL) REVEAL SEPARATE
5. CONSTRUCT NEW MODIFIED BARRIER CURB (100mm AVG. HT.)
6. REMOVE EXISTING BARRIER CURB
7. RENEW EXISTING BARRIER CURB (100mm AVG. HT. REVEAL)
8. ADJUST EXISTING CATCH BASIN/MANHOLE TO GRADE
9. REMOVE EXISTING FRAME AND COVER AND PLACED NEW FRAME AND COVER (AP-004 AND AP-005)
10. INSTALL NEW CAST IRON RISING RING
11. INSTALL NEW DETECTABLE SURFACE WARNING TILES
12. ADJUST MTS MANHOLE FRAME AND COVER c/w 50mm CAST IRON RISING RING (BY OTHERS)
13. ADJUST EXISTING HYDRO MANHOLE (BY OTHERS)
14. ADJUST EXISTING CURB STOP TO GRADE
15. INSTALL VALVE BOX EXTENSION
16. REMOVE EXISTING CATCHBASIN AND CURB INLET
17. REMOVE EXISTING CATCHBASIN AND INSTALL NEW CURB AND GUTTER INLET c/w CATCHBASIN (SD-024) AND CONNECT TO EXISTING LEAD
18. REMOVE EXISTING PAVING STONES
19. REMOVE EXISTING TREETWELL
20. REMOVE EXISTING CONCRETE PAVEMENT AND CONSTRUCT NEW 200mm REINFORCED CONCRETE PAVEMENT c/w 50mm TYPE 1A ASPHALT OVERLAY AS APPLICABLE
21. CONSTRUCT NEW BARRIER CURB (100mm AVERAGE HEIGHT REVEAL, SEPARATE)
22. REMOVE EXISTING PARKING PAY STATION (BY OTHERS)
23. CONSTRUCT NEW MONOLITHIC CONCRETE MEDIAN
24. REGRADE EXISTING PAVING STONES
25. REMOVE PAVEMENT AS REQUIRED AND PLACE ASPHALT PATCH
26. REMOVE EXISTING CONCRETE PAVEMENT AND CONSTRUCT NEW 200mm REINFORCED CONCRETE PAVEMENT c/w 85mm TYPE 1A ASPHALT OVERLAY.



PLAN
Scale 1:250



EXISTING	LEGEND - PLAN	PROPOSED	EXISTING	LEGEND - PLAN	PROPOSED	EXISTING	LEGEND - PROFILE	PROPOSED
150 mm W.M.	WATERMAIN	150 mm W.M.	HYDRO	— x —	— x —	— x —	— x —	— x —
300mm L.D.S.	HYDRANT	300mm L.D.S.	M.T.S.	—	—	—	—	—
250mm W.W.S.	VALVE	250mm W.W.S.	CONCRETE	—	—	—	—	—
	LAND DRAINAGE SEWER		ASPHALT	—	—	—	—	—
	WASTEWATER SEWER		PROPERTY LINE	—	—	—	—	—
	MANHOLE		SURVEY BAR	—	—	—	—	—
	CATCH BASIN		ELEVATION	(35.750)				
	CATCH PIT		TREE	—	—	—	—	—
	TRAFFIC SIGNAL POLE		SIDEWALK RAMP	—	—	—	—	—
	STREET LIGHT		CONCRETE SIDEWALK	—	—	—	—	—
	GAS		FENCE	—	—	—	—	—

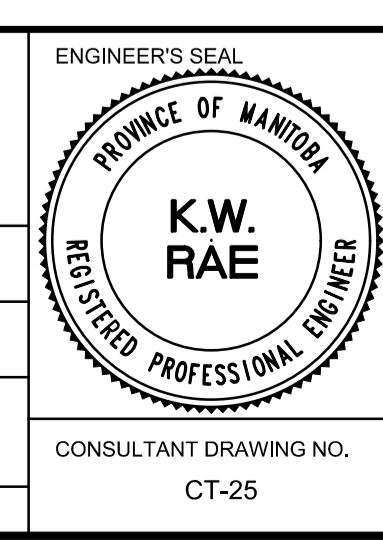
LOCATION APPROVED UNDERGROUND STRUCTURES

SUPV. U/G STRUCTURES COMMITTEE DATE

NOTE:
LOCATION OF UNDERGROUND STRUCTURES AS SHOWN ARE BASED ON THE BEST INFORMATION AVAILABLE. BUT NO GUARANTEE IS GIVEN THAT ALL EXISTING UTILITIES ARE SHOWN OR THAT THE GIVEN LOCATIONS ARE EXACT. CONFIRMATION OF EXISTENCE AND EXACT LOCATION OF ALL SERVICES MUST BE OBTAINED FROM THE INDIVIDUAL UTILITIES BEFORE PROCEEDING WITH CONSTRUCTION.

NO.	REVISIONS	DATE	BY
0	ISSUED FOR TENDER	2018/02/26	KWR
B	RE-ISSUED FOR REVIEW	2018/01/29	KWR
A	ISSUED FOR REVIEW	2017/11/27	KWR

B.M. 38 - 035 ELEV. 232.286	S.W. Cor. Notre Dame Ave. & Hargrave St., Tblt. in N. Cor. Round. No. 440 Hargrave St., 1m W. & 0.3 m below Tyndall Stone of N.E. Cor. of Bldg.
AECOM	DESIGNED BY: KWR CHECKED BY: KWR DRAWN BY: PAAP APPROVED BY: HOR. SCALE: 1:250 VERTICAL: 1:10
	RELEASED FOR CONSTRUCTION BY: DATE: 2017/11/27



THE CITY OF WINNIPEG
PUBLIC WORKS DEPARTMENT
ENGINEERING DIVISION

DOWNTOWN BIKE LANE SYSTEM AND STREET IMPROVEMENT

PLAN/PROFILE GRADING PLAN
GARRY STREET
STATION 0+470 TO STATION 0+580

CITY DRAWING NUMBER P-3495-25
SHEET 25 OF 45

CONSULTANT DRAWING NO. CT-25



METRIC
WHOLE NUMBERS INDICATE MILLIMETRES
DECIMALIZED NUMBERS INDICATE METRES