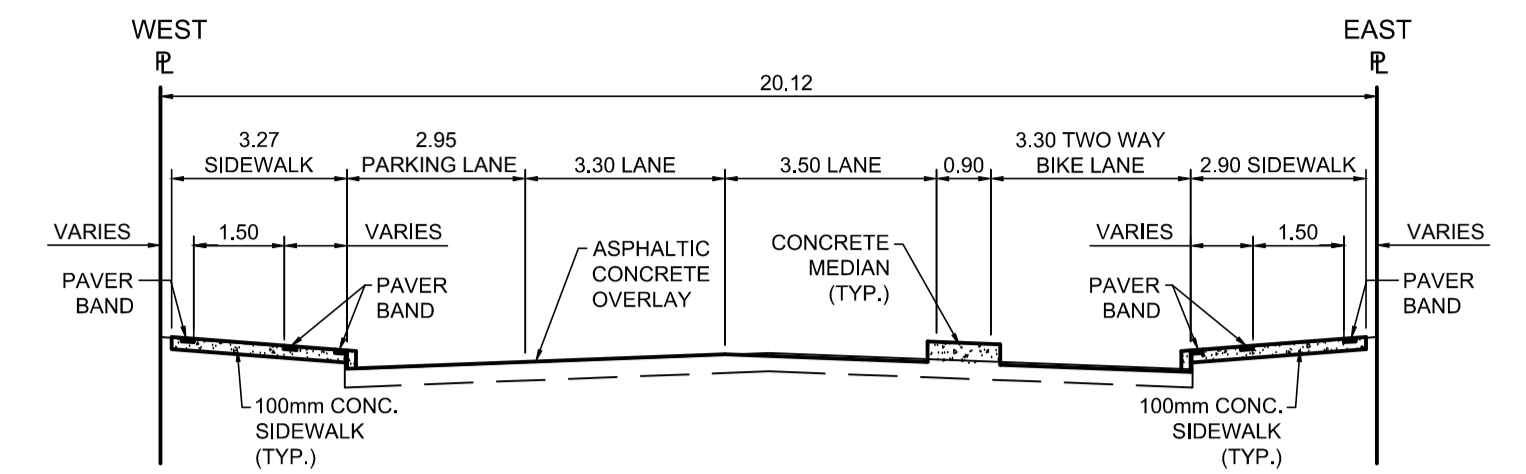


PROFILE
Scale H=1:250 V=1:10

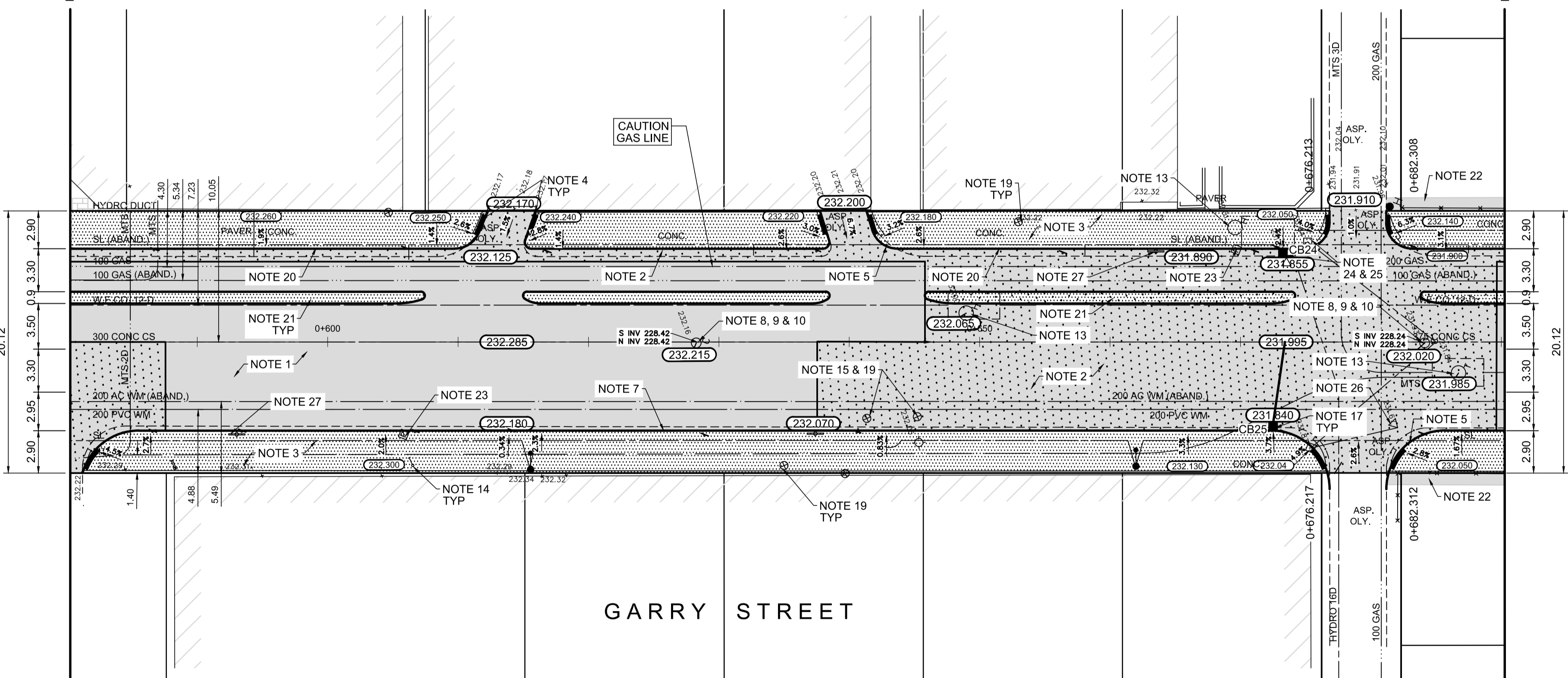


TYPICAL SECTION
Scale NTS

| DESCRIPTION | RIM ELEV. | INVERT | | | | | CONNECTION | LEAD |
|-------------|-----------|--------|------|-------|---------|----------|------------|--------------------|
| | | EAST | WEST | NORTH | SOUTH | SEWER | | |
| CB24 | 231.855 | | | | 230.205 | | EX. LEAD | |
| CB25 | 231.840 | 230.19 | | | | 228.275± | 375 CS | 7.0m-2500 @ 2% Min |

- REFERENCE NOTES**
- PAVEMENT DIMENSIONS ARE TO BACK OF CURB
 - BASELINE IS CENTRELINE OF RIGHT-OF-WAY
 - PROPERTY LINES OBTAINED FROM THE CITY OF WINNIPEG L.B.I.S., AND SCALE FACTOR WAS APPLIED
 - REFER TO AECOM FIELD BOOK NO. 4987
 - REFER TO DWGS CT-41 FOR STREETSCAPING ELEMENTS.
 - CATCH BASIN CONNECTIONS TO SEWER DESIGNED TO MAINTAIN PRE-CONSTRUCTION CAPACITY BY CATCH BASIN LEAD RESTRICTION AS INDICATED ON THE DRAWINGS. ADDITIONAL OR MODIFIED CONNECTIONS TO THE SEWER SYSTEM BEYOND THOSE INDICATED ON THE DRAWINGS REQUIRE REVIEW AND WRITTEN APPROVAL BY THE CONTRACT ADMINISTRATOR.

- CONSTRUCTION NOTES:**
- PLANE EXISTING ASPHALT AND CONSTRUCT NEW ASPHALTIC PAVEMENT OVERLAY TYPE 1A (AVERAGE THICKNESS 85mm)
 - REMOVE EXISTING PAVEMENT AND CONSTRUCT NEW 200mm REINFORCED CONCRETE PAVEMENT c/w 85mm TYPE 1A ASPHALT OVERLAY
 - REMOVE EXISTING CONCRETE SIDEWALK AND CONSTRUCT NEW 100mm SIDEWALK c/w PAVING STONE BAND (SEE DETAIL 2, CT-43)
 - RENEW EXISTING MONOLITHIC CURB RAMP (10mm HT. INTEGRAL)
 - CONSTRUCT NEW MODIFIED BARRIER CURB (100mm AVG. HT. REVEAL SEPARATE)
 - REMOVE EXISTING BARRIER CURB
 - RENEW EXISTING BARRIER CURB (100mm AVG. HT. REVEAL)
 - ADJUST EXISTING CATCH BASIN/MANHOLE TO GRADE
 - REMOVE EXISTING FRAME AND COVER AND PLACED NEW FRAME AND COVER (AP-004 AND AP-005)
 - INSTALL NEW CAST IRON RISER RING
 - INSTALL NEW DETECTABLE SURFACE WARNING TILES
 - ADJUST MTS MANHOLE FRAME AND COVER c/w 50mm CAST IRON RISER RING (BY OTHERS)
 - ADJUST EXISTING HYDRO MANHOLE (BY OTHERS)
 - ADJUST EXISTING CURB STOP TO GRADE
 - INSTALL VALVE BOX EXTENSION
 - REMOVE EXISTING CATCHBASIN AND CURB INLET
 - INSTALL NEW CURB AND GUTTER INLET c/w CATCHBASIN (SD-024) AND CONNECT TO EXISTING SEWER
 - REGRADE EXISTING PAVING STONES
 - ADJUST EXISTING VALVE BOX TO GRADE
 - CONSTRUCT NEW BARRIER CURB (100mm AVERAGE HEIGHT REVEAL, SEPARATE)
 - CONSTRUCT NEW MONOLITHIC CONCRETE MEDIAN
 - REMOVE PAVEMENT AND PLACE ASPHALT PATCH
 - REMOVE EXISTING PARKING PAY STATION (BY OTHERS)
 - REMOVE EXISTING CATCHBASIN AND INSTALL NEW CURB & GUTTER INLET c/w CATCHBASIN (SD-024) AND CONNECT TO EXIST. LEAD
 - REMOVE EXISTING CATCHPIT
 - REMOVE EXISTING GUTTER INLET AND ABANDON EXIST. LEAD
 - REMOVE AND SALVAGE EXIST. BIKE RACK.



PLAN
Scale 1:250

| EXISTING | LEGEND - PLAN | PROPOSED | EXISTING | LEGEND - PLAN | PROPOSED | EXISTING | LEGEND - PROFILE | PROPOSED |
|--------------|---------------------|--------------|-------------------|-------------------|-----------|-----------|------------------|-----------|
| 150 mm W.M. | WATERMAIN | 150 mm W.M. | HYDRO | M.T.S. | — x — | — x — | — x — | — x — |
| 300mm L.D.S. | LAND DRAINAGE SEWER | 300mm L.D.S. | CONCRETE | CONCRETE | — · — · — | — · — · — | — · — · — | — · — · — |
| 250mm W.W.S. | WASTEWATER SEWER | 250mm W.W.S. | PROPERTY LINE | PROPERTY LINE | — — — — | — — — — | — — — — | — — — — |
| □ | MANHOLE | ● | SURVEY BAR | SURVEY BAR | — + — | — + — | — + — | — + — |
| □ | CATCH BASIN | ■ | ELEVATION | ELEVATION | (35.750) | (35.750) | (35.750) | (35.750) |
| ▽ | CATCH PIT | ▼ | TREE | TREE | ⊙ | ⊙ | ⊙ | ⊙ |
| ↑ | TRAFFIC SIGNAL POLE | ↑ | SIDEWALK RAMP | SIDEWALK RAMP | — / — | — / — | — / — | — / — |
| ↑ | STREET LIGHT | ↑ | CONCRETE SIDEWALK | CONCRETE SIDEWALK | — ■ — | — ■ — | — ■ — | — ■ — |
| — | GAS | — | FENCE | FENCE | — — — — | — — — — | — — — — | — — — — |

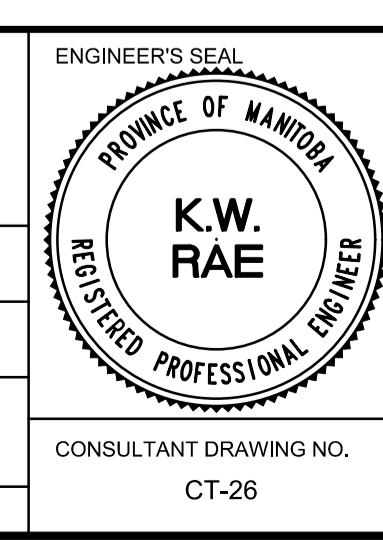
LOCATION APPROVED UNDERGROUND STRUCTURES

SUPV. U/G STRUCTURES COMMITTEE DATE

NOTE:
LOCATION OF UNDERGROUND STRUCTURES AS SHOWN ARE BASED ON THE BEST INFORMATION AVAILABLE. BUT NO GUARANTEE IS GIVEN THAT ALL EXISTING UTILITIES ARE SHOWN OR THAT THE GIVEN LOCATIONS ARE EXACT. CONFIRMATION OF EXISTENCE AND EXACT LOCATION OF ALL SERVICES MUST BE OBTAINED FROM THE INDIVIDUAL UTILITIES BEFORE PROCEEDING WITH CONSTRUCTION.

| NO. | REVISIONS | DATE | BY |
|-----|----------------------|------------|-----|
| 0 | ISSUED FOR TENDER | 2018/02/26 | KWR |
| B | RE-ISSUED FOR REVIEW | 2018/01/29 | KWR |
| A | ISSUED FOR REVIEW | 2017/11/27 | KWR |

| | |
|--------------------------------|---|
| B.M. 38 - 035 ELEV. 232.286 | S.W. Cor. Notre Dame Ave. & Hargrave St., Tbl. in N. Conc. Found. No. 440 Hargrave St., 1m W. & 0.3 m below Tyndall Stone of N.E. Cor. of Bldg. |
| DESIGNED BY | KWR |
| CHECKED BY | KWR |
| DRAWN BY | PAAP |
| APPROVED BY | |
| HOR. SCALE: | 1:250 |
| VERTICAL: | 1:10 |
| RELEASED FOR CONSTRUCTION BY: | |
| DATE | 2017/11/27 |



AECOM

THE CITY OF WINNIPEG
PUBLIC WORKS DEPARTMENT
ENGINEERING DIVISION

DOWNTOWN BIKE LANE SYSTEM AND STREET IMPROVEMENT

PLAN/PROFILE GRADING PLAN
GARRY STREET
STATION 0+580 TO STATION 0+690

CITY DRAWING NUMBER P-3495-26
SHEET 26 OF 45

CONSULTANT DRAWING NO. CT-26

APEGM
Certificate of Authorization
AECOM Canada Ltd.
No. 4671 Date: _____

METRIC
WHOLE NUMBERS INDICATE MILLIMETRES
DECIMALIZED NUMBERS INDICATE METRES