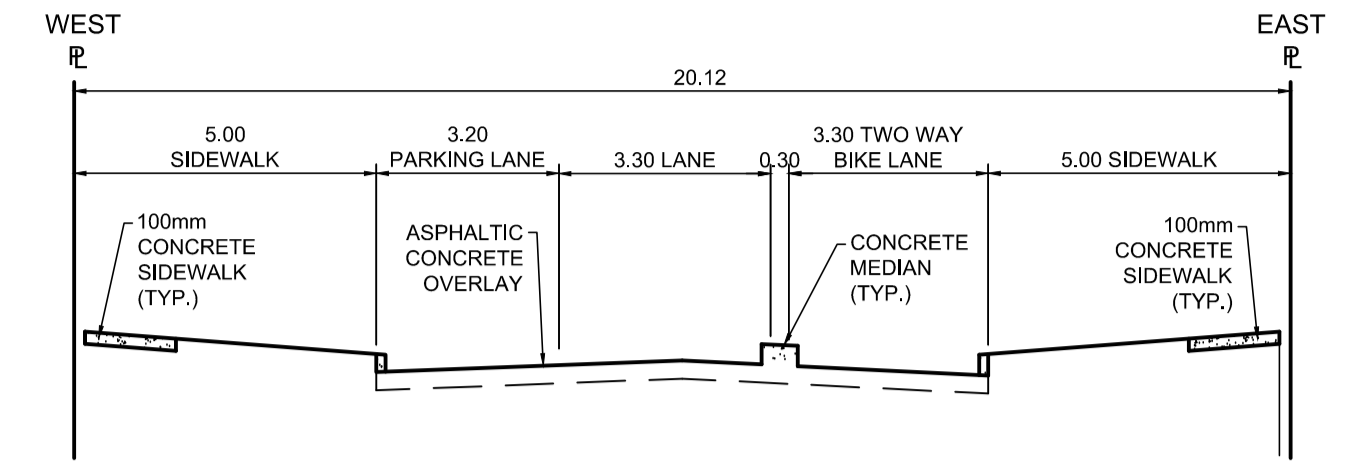


PROFILE
Scale H=1:250 V=1:10



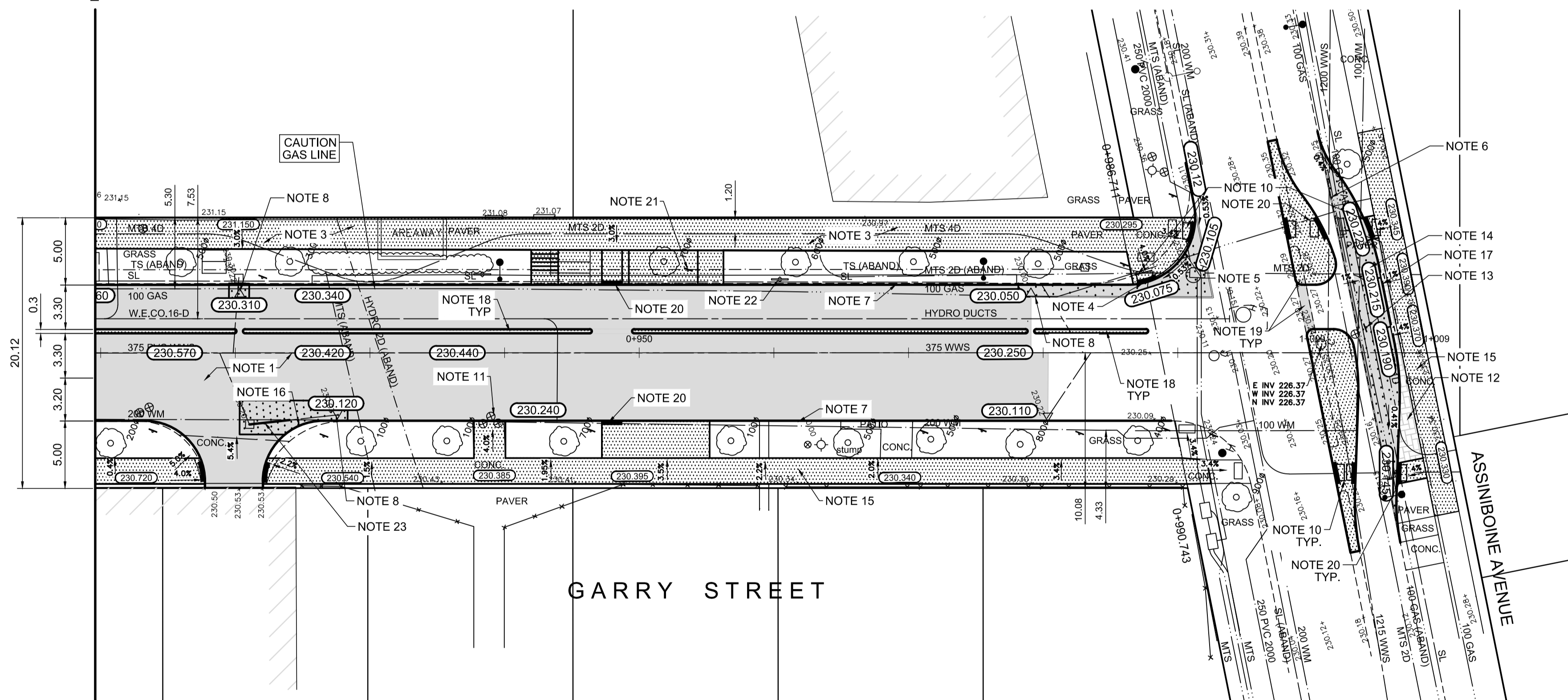
TYPICAL SECTION
Scale NTS

REFERENCE NOTES

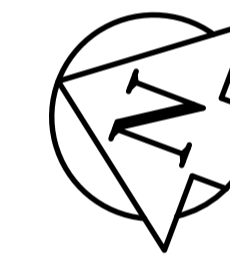
- A. PAVEMENT DIMENSIONS ARE TO BACK OF CURB
- B. BASELINE IS CENTRELINE OF RIGHT-OF-WAY
- C. PROPERTY LINES OBTAINED FROM THE CITY OF WINNIPEG L.B.I.S., AND SCALE FACTOR WAS APPLIED
- D. REFER TO AECOM FIELD BOOK NO. 4987
- E. REFER TO DWGS CT-42 FOR STREETSCAPING ELEMENTS.
- F. CATCH BASIN CONNECTIONS TO SEWER DESIGNED TO MAINTAIN PRE-CONSTRUCTION CAPACITY BY CATCH BASIN LEAD RESTRICTION AS INDICATED ON THE DRAWINGS. ADDITIONAL OR MODIFIED CONNECTIONS TO THE SEWER SYSTEM BEYOND THOSE INDICATED ON THE DRAWINGS REQUIRE REVIEW AND WRITTEN APPROVAL BY THE CONTRACT ADMINISTRATOR.

CONSTRUCTION NOTES:

1. PLANE EXISTING ASPHALT AND CONSTRUCT NEW ASPHALTIC PAVEMENT OVERLAY TYPE 1A (AVERAGE THICKNESS 50mm)
2. REMOVE EXISTING PAVEMENT AND CONSTRUCT NEW 200mm REINFORCE CONCRETE PAVEMENT
3. REMOVE EXISTING PAVER SIDEWALK AND CONSTRUCTED NEW 100mm SIDEWALK c/w PAVING STONE BAND (SEE DETAIL 2, CT-43)
4. RENEW EXISTING MONOLITHIC CURB RAMP (10mm HT. INTEGRAL)
5. CONSTRUCT NEW MODIFIED BARRIER CURB (150mm AVG. HT. REVEAL SEPARATE)
6. REMOVE EXISTING BARRIER CURB SAWCUT 150mm FROM FACE OF CURB
7. RENEW EXISTING BARRIER CURB (150mm AVG. HT. REVEAL)
8. ADJUST EXISTING CATCH BASIN/MANHOLE TO GRADE
9. REMOVE EXISTING ROUND GRATED COVER AND PLACE NEW SOLID COVER (AP-005)
10. INSTALL NEW DETECTABLE SURFACE WARNING TILES
11. INSTALL VALVE BOX EXTENSION
12. REGRADE EXISTING PAVING STONES
13. RELOCATE EXISTING "RIVER WALK" SIGN, REMOVE EXISTING PILE AND INSTALL NEW PILE, NEW PILE DEPTH TO MATCH EXISTING
14. CONSTRUCT NEW 200mm REINFORCED CONCRETE PAVEMENT c/w 50mm ASPHALT OVERLAY
15. RENEW EXIST. CONCRETE SIDEWALK
16. CONSTRUCT NEW MODIFIED BARRIER CURB (150mm AVG. HT REVEAL SEPARATE)
17. CONSTRUCT NEW BARRIER CURB (125mm AVG. HT. REVEAL SEPARATE)
18. CONSTRUCT NEW CONCRETE MONOLITHIC CONCRETE MEDIAN WITH MOUNTABLE CURB
19. REMOVE EXISTING CONCRETE SAFETY MEDIAN AND CONSTRUCT NEW CONCRETE SAFETY MEDIAN, PLACE ASPHALT IN MEDIAN OPENING
20. CONSTRUCT NEW RAMP CURB (10mm HT., INTEGRAL)
21. SEE LANDSCAPE DRAWINGS FOR NEW ACCESS RAMP
22. REMOVE AND SALVAGE EXIST. BIKE RACK.
23. REPAIR 3.0m OF 250mmØ C.B. LEAD



PLAN
Scale 1:250



150 mm W.M.	WATERMAIN	150 mm W.M.	HYDRO	— x —	PROFILE
○	HYDRANT	◆	M.T.S.	— □ —	WEST GUTTER
⊙	VALVE	⊙	CONCRETE	— ○ —	EAST GUTTER
300mm L.D.S.	LAND DRAINAGE SEWER	300mm L.D.S.	ASPHALT	— ◇ —	N/W PROPERTY LINE
250mm W.W.S.	WASTEWATER SEWER	250mm W.W.S.	PROPERTY LINE	— ○ —	S/E PROPERTY LINE
○	MANHOLE	⊕	SURVEY BAR		
□	CATCH BASIN	235.750	ELEVATION	(35.750)	
▽	CATCH PIT	2500#	TREE		
↑	TRAFFIC SIGNAL POLE		SIDEWALK RAMP		
↑	STREET LIGHT		CONCRETE SIDEWALK		
—	GAS		FENCE		
EXISTING	LEGEND - PLAN	PROPOSED	EXISTING	LEGEND - PLAN	PROPOSED
—	EXISTING	—	EXISTING	—	EXISTING
—	LEGEND - PROFILE	—	LEGEND - PROFILE	—	PROPOSED

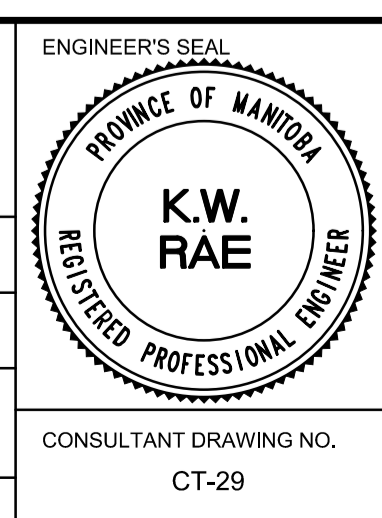
LOCATION APPROVED UNDERGROUND STRUCTURES

SUPV. U/G STRUCTURES COMMITTEE DATE

NOTE:
LOCATION OF UNDERGROUND STRUCTURES AS SHOWN ARE BASED ON THE BEST INFORMATION AVAILABLE, BUT NO GUARANTEE IS GIVEN THAT ALL EXISTING UTILITIES ARE SHOWN OR THAT THE GIVEN LOCATIONS ARE EXACT. CONFIRMATION OF EXISTENCE AND EXACT LOCATION OF ALL SERVICES MUST BE OBTAINED FROM THE INDIVIDUAL UTILITIES BEFORE PROCEEDING WITH CONSTRUCTION.

B.M. 38 - 035	S.W. Cor. Notre Dame Ave. & Hargrave St., Tblt. in N. Conc. Found. No. 440 Hargrave St., 1m W. & 0.3 m below Tyndall Stone of N.E. Cor. of Bldg.
ELEV. 232.286	
NO.	REVISIONS
0	ISSUED FOR TENDER
B	RE-ISSUED FOR REVIEW
A	ISSUED FOR REVIEW
DATE	2017/11/27
BY	KWR

AECOM	
DESIGNED BY	KWR
CHECKED BY	KWR
DRAWN BY	PAAP
APPROVED BY	
HOR. SCALE:	1:250
VERTICAL:	1:10
RELEASED FOR CONSTRUCTION BY:	
DATE	2017/11/27



THE CITY OF WINNIPEG
PUBLIC WORKS DEPARTMENT
ENGINEERING DIVISION

Winnipeg

DOWNTOWN BIKE LANE SYSTEM AND STREET IMPROVEMENT

PLAN/PROFILE GRADING PLAN
GARRY STREET
STATION 0+910 TO ASSINBOINE AVENUE

CITY DRAWING NUMBER P-3495-29
SHEET 29 OF 45

CONSULTANT DRAWING NO. CT-29



METRIC
WHOLE NUMBERS INDICATE MILLIMETRES
DECIMALIZED NUMBERS INDICATE METRES