

ISO A1 - 594mm x 841mm  
O:\winipeg\proj\160034\Drawings\11\Drawings\06\Structural\Pedestrian Ramps\160034\_DD\_SR.dwg - Last Saved: 10/25/2018 9:57 AM by Theinack - Plot: 10/25/2018 3:53 PM by Alex Hegonar

SOUTH RAMP ELEVATIONS			
Location	Elevation	Northing	Easting
WP1	232.633	8986.825	10764.361
WP2	232.599	8986.238	10766.128
WP3	232.559	8985.651	10767.896
WP4	232.502	8985.529	10770.434
WP5	232.442	8988.454	10769.690
WP6	232.508	8987.717	10771.613
WP7	232.526	8985.944	10772.064
WP8	233.302	8991.627	10786.999
WP9	233.320	8989.853	10787.450
WP10	233.381	8992.243	10789.422
WP11	233.399	8990.469	10789.873
WP12	233.413	8992.858	10791.845
WP13	233.431	8991.085	10792.296

SOUTH RAMP ELEVATIONS			
Location	Elevation	Northing	Easting
WP14	233.440	8991.192	10793.084
WP15	233.420	8993.184	10793.125
WP16	233.457	8990.636	10794.604
WP17	233.404	8993.124	10794.698
WP18	233.345	8993.017	10797.529
WP19	233.353	8992.985	10798.364
WP20	233.457	8990.529	10797.435
WP21	233.465	8990.497	10798.269
WP22	233.515	8988.598	10795.530
WP23	233.533	8988.528	10797.359
WP24	233.541	8988.497	10798.193
WP25	233.530	8988.090	10795.511
WP26	233.548	8988.020	10797.340

SOUTH RAMP ELEVATIONS			
Location	Elevation	Northing	Easting
WP27	233.550	8987.989	10798.174
WP28	233.580	8986.591	10795.454
WP29	233.598	8986.521	10797.283
WP30	233.594	8986.490	10798.117
WP31	233.818	8981.833	10795.274
WP32	233.836	8981.763	10797.102
WP33	233.942	8978.575	10795.926
WP34	233.960	8979.344	10797.587
WP35	234.054	8976.533	10796.871
WP36	234.072	8977.302	10798.532
WP37	234.160	8974.483	10797.357
WP38	234.178	8974.541	10799.186
WP39	234.647	8964.749	10797.667

SOUTH RAMP ELEVATIONS			
Location	Elevation	Northing	Easting
WP40	234.665	8964.807	10799.496
WP41	234.673	8964.833	10800.296
WP42	234.638	8963.280	10797.714
WP43	234.647	8962.350	10797.744
WP44	234.665	8962.409	10799.573
WP45	234.673	8962.434	10800.373
WP46	235.511	8945.069	10798.295
WP47	235.529	8945.128	10800.124
WP48	235.555	8940.704	10798.435
WP49	235.532	8939.768	10798.676
WP50	235.354	8933.309	10801.972
WP51	235.617	8942.242	10802.610

NOTE: SOUTH RAMP ELEVATIONS WP1 TO WP 51 ARE LOCATED IN THE GUTTER

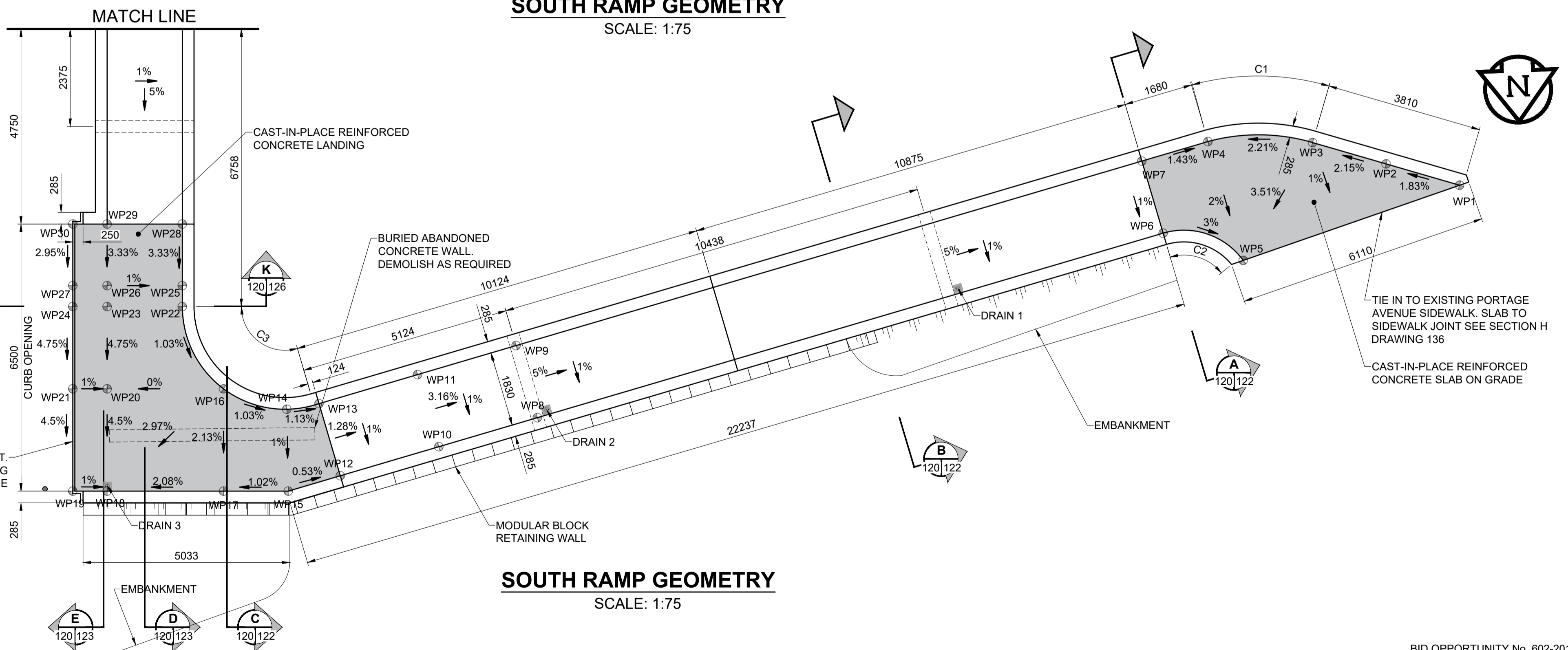
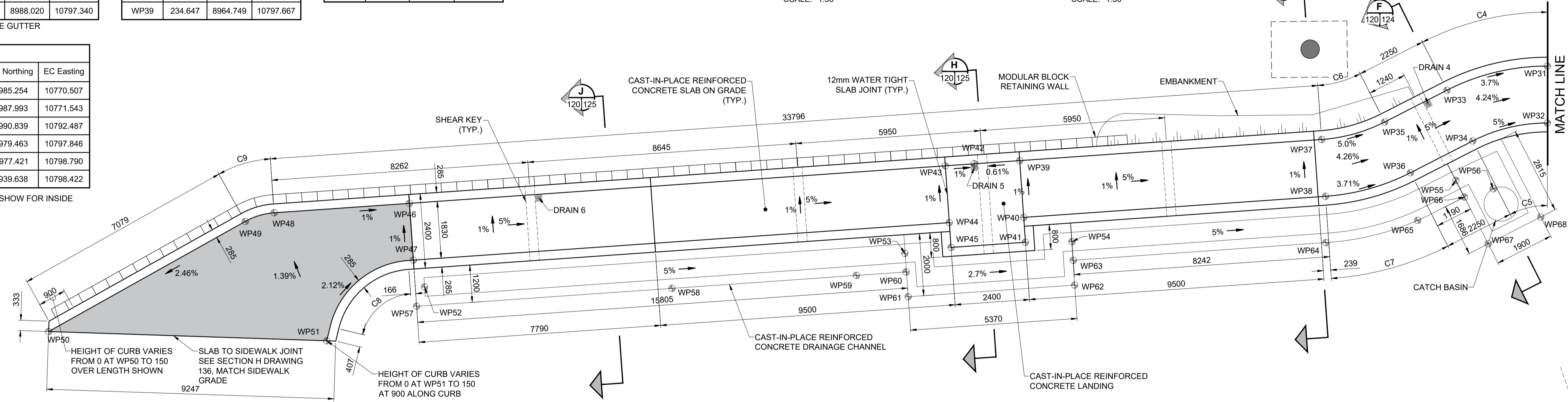
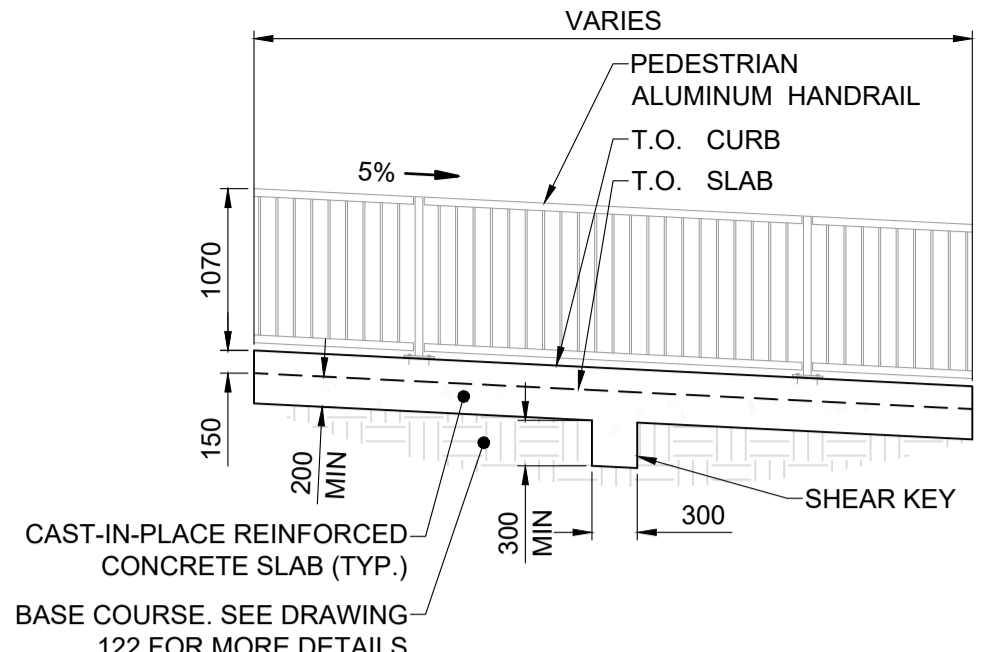
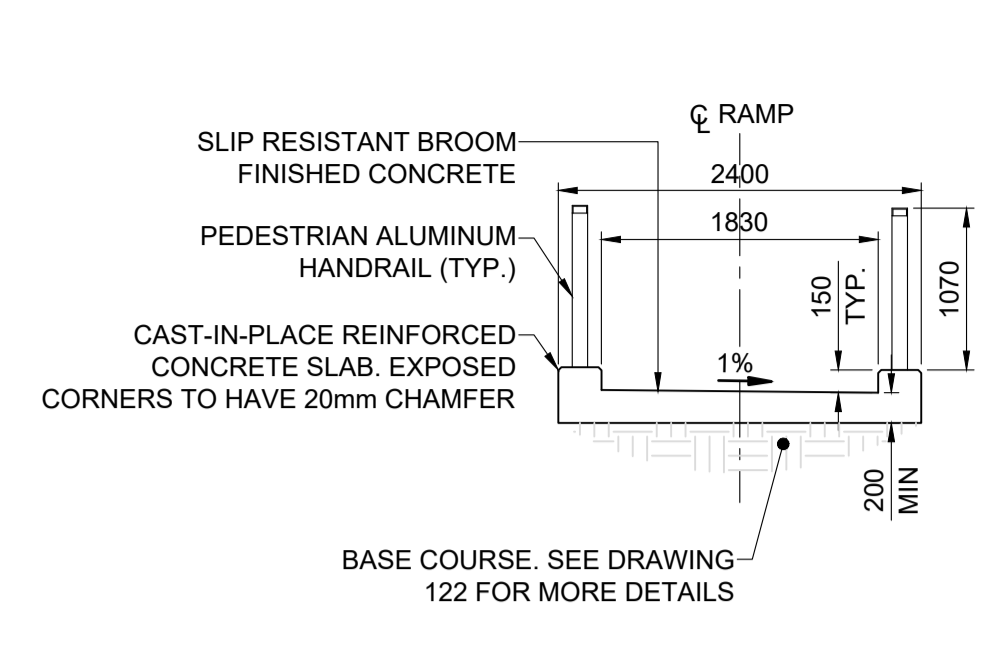
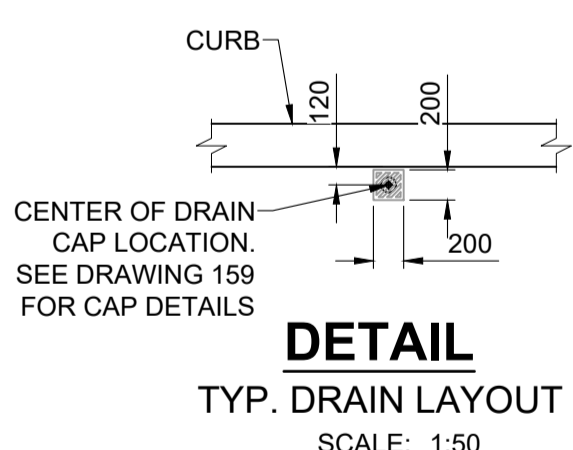
CURVE TABLE							
Curve #	Length	Radius	Delta	BC Northing	BC Easting	EC Northing	EC Easting
C1	2.738	5.000	031°22'32"	8985.380	10767.806	8985.254	10770.507
C2	1.757	1.500	067°06'54"	8988.541	10769.978	8987.993	10771.543
C3	4.114	2.215	106°25'49"	8988.608	10795.245	8990.839	10792.487
C5	2.356	5.000	027°00'00"	8981.752	10797.387	8979.463	10797.846
C7	2.971	7.400	023°00'00"	8974.550	10799.471	8977.421	10798.790
C9	1.100	2.500	025°12'51"	8940.695	10798.150	8939.638	10798.422

NOTE: CURVE DATA IS PROVIDED FOR OUTSIDE CURVES, OFFSET AS SHOWN FOR INSIDE GUTTER CURVES

BASE OF SLOPE AT DRAINAGE CHANNEL WALL			
Location	Elevation	Northing	Easting
WP57	235.679	8945.175	10801.609
WP58	235.317	8953.410	10801.346
WP59	235.241	8959.390	10801.155
WP60	235.204	8960.972	10801.105
WP61	235.471	8960.997	10801.904
WP62	235.345	8966.365	10801.733
WP63	235.078	8966.339	10800.933
WP64	234.884	8974.507	10800.673
WP65	234.337	8977.482	10800.085
WP66	234.281	8979.006	10799.380
WP67	234.424	8979.714	10800.910
WP68	234.124	8981.438	10800.112

TOP OF DRAINAGE CHANNEL SLAB			
Location	Elevation	Northing	Easting
WP52	235.214	8945.455	10800.999
WP53	234.439	8960.941	10800.505
WP54	234.221	8966.332	10800.333
WP55	233.590	8978.754	10798.835
WP56	233.504	8979.946	10799.150

SOUTH RAMP CENTER OF DRAIN CAP LOCATIONS		
Location	Northing	Easting
DRAIN 1	8988.874	10776.651
DRAIN 2	8991.444	10786.767
DRAIN 3	8992.897	10797.525
DRAIN 4	8977.953	10796.346
DRAIN 5	8963.284	10797.834
DRAIN 6	8949.236	10798.282



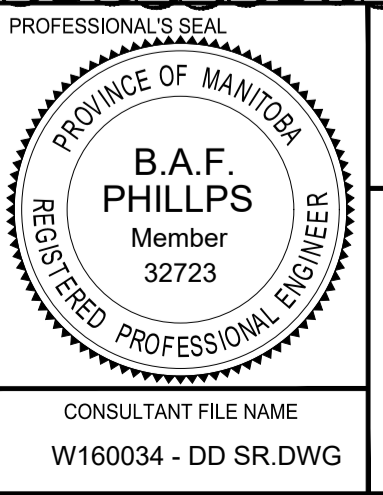
**LOCATION APPROVED**  
UNDERGROUND STRUCTURES

DATE: \_\_\_\_\_

**NOTE:**  
LOCATION OF UNDERGROUND STRUCTURES AS SHOWN ARE BASED ON THE BEST INFORMATION AVAILABLE BUT NO GUARANTEE IS GIVEN THAT ALL EXISTING UTILITIES ARE SHOWN OR THAT THE GIVEN LOCATIONS ARE EXACT. CONFIRMATION OF EXISTENCE AND EXACT LOCATION OF ALL SERVICES MUST BE OBTAINED FROM THE INDIVIDUAL UTILITIES BEFORE PROCEEDING WITH CONSTRUCTION.

No.	REVISIONS	DATE	BY
D	ISSUED FOR ADDENDUM 1	18/10/05	BAP
C	ISSUED FOR TENDER	18/09/04	BAP
B	ISSUED FOR 95% DESIGN REVIEW	18/08/07	BAP
A	ISSUED FOR 50% DESIGN REVIEW	18/06/28	BAP

DESIGNED BY	CHECKED BY
ALP/YM	BAP
DRAWN BY	APPROVED BY
ALP/TN	BAP
HOR SCALE	VERT SCALE
AS SHOWN	AS SHOWN
RELEASED FOR CONSTRUCTION	DATE
N/A	

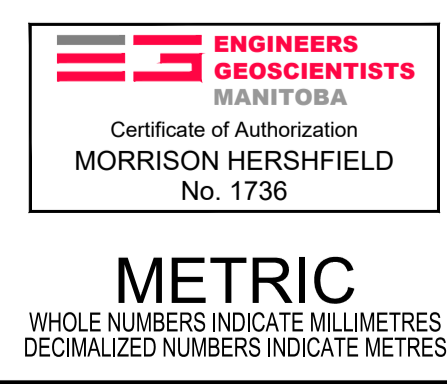


**THE CITY OF WINNIPEG**  
PUBLIC WORKS DEPARTMENT  
ENGINEERING DIVISION

**EMPIRE STREET PROJECT**  
PEDESTRIAN ACCESSIBILITY RAMPS  
SOUTH RAMP  
GEOMETRY

CITY DRAWING NUMBER: P-3494-120  
SHEET OF: 120 OF 169  
DRAWING No.: 120  
REV: D

CONSULTANT FILE NAME: W160034 - DD SR.DWG



BID OPPORTUNITY No. 602-2018