

- NOTES:**
- * WALL BATTER ASSUMED AT A MAX OF 6 DEGREES. DESIGN OF WALL BY MODULAR BLOCK RETAINING WALL SUPPLIER.
 - ** WELL GRADED COMPACTED AGGREGATE FOOTINGS DISPLAYED AT ASSUMED 600 BY 1200 DIMENSIONS. DESIGN OF FOOTING BY MODULAR BLOCK RETAINING WALL SUPPLIER.
 - FOR TYPICAL SLAB CROSS SECTION DIMENSIONS SEE SHEET 120.
 - ALL EXPOSED CONCRETE CORNERS TO HAVE A 20mm CHAMFER UNLESS NOTED OTHERWISE.
 - SUBDRAINS TO TIE INTO NEW CATCH BASINS.



METRIC
WHOLE NUMBERS INDICATE MILLIMETRES
DECIMALIZED NUMBERS INDICATE METRES

LOCATION APPROVED
UNDERGROUND STRUCTURES

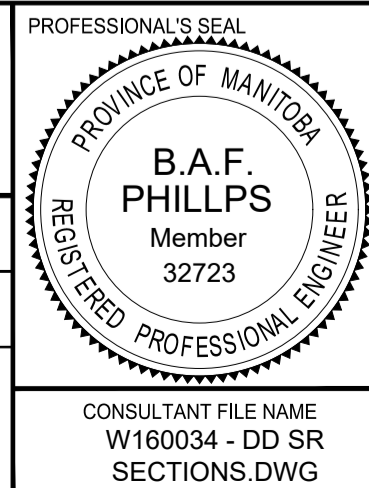
DATE: _____

NOTE:
LOCATION OF UNDERGROUND STRUCTURES AS SHOWN ARE BASED ON THE BEST INFORMATION AVAILABLE BUT NO GUARANTEE IS GIVEN THAT ALL EXISTING UTILITIES ARE SHOWN OR THAT THE GIVEN LOCATIONS ARE EXACT. CONFIRMATION OF EXISTENCE AND EXACT LOCATION OF ALL SERVICES MUST BE OBTAINED FROM THE INDIVIDUAL UTILITIES BEFORE PROCEEDING WITH CONSTRUCTION.

NO.	REVISIONS	DATE	BY
D	ISSUED FOR ADDENDUM 1	18/10/05	BAP
C	ISSUED FOR TENDER	18/09/04	BAP
B	ISSUED FOR 95% DESIGN REVIEW	18/08/07	BAP
A	ISSUED FOR 50% DESIGN REVIEW	18/06/28	BAP

MORRISON HERSHFIELD

DESIGNED BY	YM	CHECKED BY	BAP
DRAWN BY	ALP	APPROVED BY	BE
HOR SCALE	AS SHOWN	RELEASED FOR CONSTRUCTION	N/A
VERT SCALE	AS SHOWN	DATE	



THE CITY OF WINNIPEG
PUBLIC WORKS DEPARTMENT
ENGINEERING DIVISION

EMPRESS STREET PROJECT
PEDESTRIAN ACCESSIBILITY RAMPS
SOUTH RAMP
CROSS SECTIONS 3

CITY DRAWING NUMBER: P-3494-124
SHEET 124 OF 169
DRAWING No. REV 124 D

CONSULTANT FILE NAME: W160034 - DD SR SECTIONS.DWG