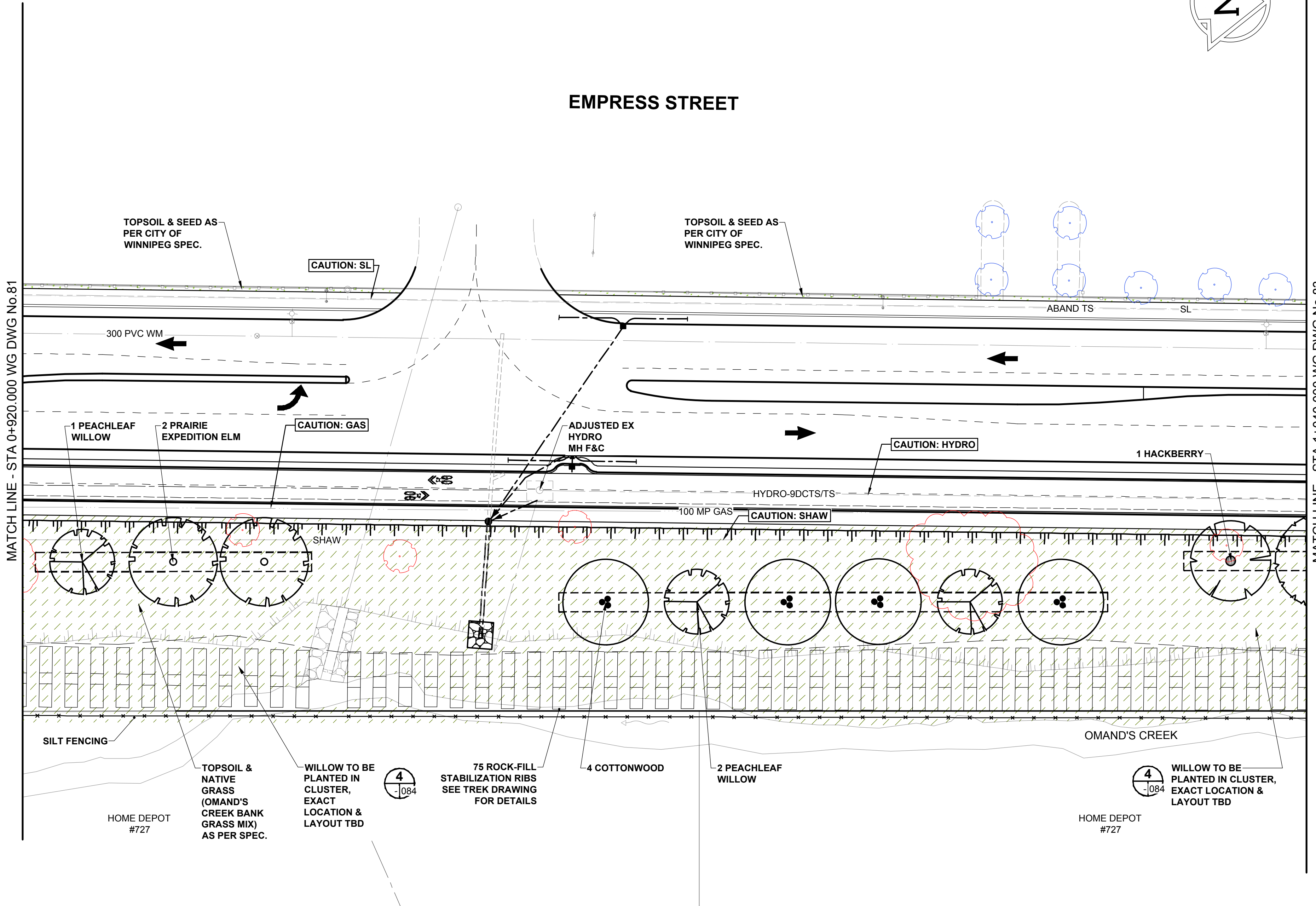


LANDSCAPE LEGEND

	TOPSOIL & SALT TOLERANT GRASS SEEDING TO MEET CITY OF WINNIPEG SPEC CW 3520 & CW 3540
	TOPSOIL & NATIVE GRASSES - OMAND'S CREEK BANK GRASS MIX 2 YEAR ACCEPTANCE PERIOD, FOLLOWED BY A 1 YEAR MAINTENANCE AND WARRANTY
	EXISTING TREES TO REMAIN
	EXISTING TREES TO BE TRIMMED
	EXISTING TREES TO BE REMOVED

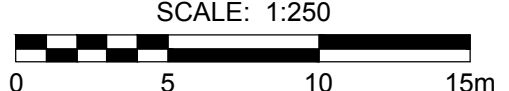
- NOTES**
- ALL CONSTRUCTION MATERIALS AND METHODS TO BE IN ACCORDANCE WITH "THE CITY OF WINNIPEG, STANDARD CONSTRUCTION SPECIFICATION AND STANDARD DETAILS" (LATEST REVISION).
 - CONTRACTOR TO TAKE PRECAUTIONARY STEPS AS OUTLINED IN THE SPECIFICATIONS TO PROTECT EXISTING TREES WITHIN THE LIMITS OF CONSTRUCTION FROM DAMAGE FROM CONSTRUCTION ACTIVITIES.
 - CONTRACTOR TO CONFIRM THE LOCATION OF ALL UTILITIES/SERVICES IN THE FIELD PRIOR TO CONSTRUCTION.
 - CONTRACTOR MUST FOLLOW THE REQUIREMENTS OF THE VARIOUS UTILITIES.
 - FINAL LOCATION OF REST STOPS TO BE CONFIRMED ON SITE PRIOR TO CONSTRUCTION.
 - CONTRACTOR SHALL INSTALL TOPSOIL AND SEEDING / NATIVE GRASS TO ALL AREAS WHERE MATERIAL IS REMOVED AND NOT RE-ESTABLISHED. FINAL EXTENT & SEEDING TYPE TO BE CONFIRMED ON SITE PRIOR TO CONSTRUCTION.
 - TOPSOIL AND SEEDING / NATIVE GRASS SHALL BE PLANTED AT A DISTANCE AS INDICATED BELOW, UNLESS NOTED OTHERWISE ON PLAN:
 - TYPICAL 1.0m OFFSET FROM SIDEWALK / PATHWAY
 - TYPICAL 0.6m OFFSET FROM SILT FENCING
 - CONTRACTOR TO STAKE PROPOSED TREE LOCATION ON SITE, LAYOUT TO BE APPROVED BY LANDSCAPE ARCHITECT PRIOR TO INSTALLATION.
 - SEE SHEET 84 FOR PROPOSED TREE PLANTING DETAILS
 - BOULEVARD TREES SHALL BE PLANTED AT A MINIMUM DISTANCE FROM ABOVE GROUND STRUCTURES AS INDICATED BELOW:
 - MINIMUM DISTANCE FROM STREET INTERSECTIONS: 6m
 - MINIMUM DISTANCE FROM LIGHT STANDARDS: 3m
 - MINIMUM DISTANCE FROM PRIVATE APPROACHES: 1.5m
 - MINIMUM DISTANCE FROM HYDRANTS: 3m
 - MINIMUM DISTANCE FROM HYDRO POLES: 3m
 - MINIMUM DISTANCE FROM MANHOLES/CB'S/SEWER GRATES: 3m
 - ALSO REFER TO WRITTEN SPECIFICATION.



REFERENCE LEGEND
 -SEE SHEET 20 FOR PAVING
 -SEE SHEET 35 FOR GRADING
 -SEE SHEET 52 FOR PROFILES
 -SEE SHEET 59 FOR CYCLE TRACK PROFILES

PLANT LIST
 (REFER TO SHEET 84 FOR FULL PLANT SCHEDULE & DETAILS)

COMMON NAME
DECIDUOUS TREES
DELTA HACKBERRY
COTTONWOOD (MALE)
PEACHLEAF WILLOW
PRAIRIE EXPEDITION ELM



METRIC
 WHOLE NUMBERS INDICATE MILLIMETRES
 DECIMALIZED NUMBERS INDICATE METRES

EXISTING	LEGEND - PLAN	NEW	EXISTING	LEGEND - PLAN	NEW	EXISTING	LEGEND - PLAN	NEW
	GAS		MANHOLE		CONCRETE PAVEMENT		LOCATION APPROVED	
	MTS / PEDESTAL		CATCH BASIN / CATCH PIT		CONC SIDEWALK / MEDIAN		UNDERGROUND STRUCTURES	
	HYDRO / CABINET		CURB INLET WITH BOX		ASPHALT PAVEMENT		SUPR. UG STRUCTURES	DATE
	CATV / FIBRE OPTIC		TREE		PAVING STONE		COMMITTEE	
	TRAFFIC SIGNALS / PIT		TEST HOLE		GRAVEL		NOTE:	
	LAND DRAINAGE SEWER		PROPERTY LINE		RAMP CURB		LOCATION OF UNDERGROUND STRUCTURES AS SHOWN ARE BASED ON THE BEST INFORMATION AVAILABLE BUT NO GUARANTEE IS GIVEN THAT ALL EXISTING UTILITIES ARE SHOWN OR THAT THE GIVEN LOCATIONS ARE EXACT. CONFIRMATION OF EXISTENCE AND EXACT LOCATION OF ALL SERVICES MUST BE OBTAINED FROM THE INDIVIDUAL UTILITIES BEFORE PROCEEDING WITH CONSTRUCTION.	
	SANITARY/COMBINED SEWER		SURVEY BAR		PLANING / REMOVAL			
	CB LEAD / SSP / DCP		FENCE					
	WATER MAIN		BOC / EDGE OF PAVEMENT					
	SUBDRAIN		ELEVATION					
	DITCH		TRAFFIC SIGN					

LOCATION APPROVED
 UNDERGROUND STRUCTURES

SUPR. UG STRUCTURES DATE COMMITTEE

NOTE:
 LOCATION OF UNDERGROUND STRUCTURES AS SHOWN ARE BASED ON THE BEST INFORMATION AVAILABLE BUT NO GUARANTEE IS GIVEN THAT ALL EXISTING UTILITIES ARE SHOWN OR THAT THE GIVEN LOCATIONS ARE EXACT. CONFIRMATION OF EXISTENCE AND EXACT LOCATION OF ALL SERVICES MUST BE OBTAINED FROM THE INDIVIDUAL UTILITIES BEFORE PROCEEDING WITH CONSTRUCTION.

No.	REVISIONS	DATE	BY
C	ISSUED FOR ADDENDUM 1	18/09/21	CO
B	ISSUED FOR TENDER	18/09/04	CO
A	ISSUED FOR CLIENT REVIEW	18/06/27	CO

SCATLIFF + MILLER + MURRAY
 visionary urban design + landscapes

DESIGNED BY: CD CHECKED BY: DM
 DRAWN BY: WF APPROVED BY: CO

HOR SCALE: 1:250
 VERT SCALE: N/A

RELEASED FOR CONSTRUCTION: N/A

DATE: 18/06/27

PROFESSIONAL'S SEAL

CHERYL DIXON
 Member No. 117

CONSULTANT FILE NAME
 602-2018_Drawing_P-3494-82-RC.dwg

THE CITY OF WINNIPEG
 PUBLIC WORKS DEPARTMENT
 ENGINEERING DIVISION

EMPRESS STREET PROJECT
 PAVEMENT RECONSTRUCTION
 LANDSCAPING
 EMPRESS STREET
 STA 0+920.000 WG TO STA 1+040.000 WG

CITY DRAWING NUMBER: P-3494-82
 SHEET 82 OF 168
 DRAWING No. REV 82 B

BID OPPORTUNITY No. 602-2018