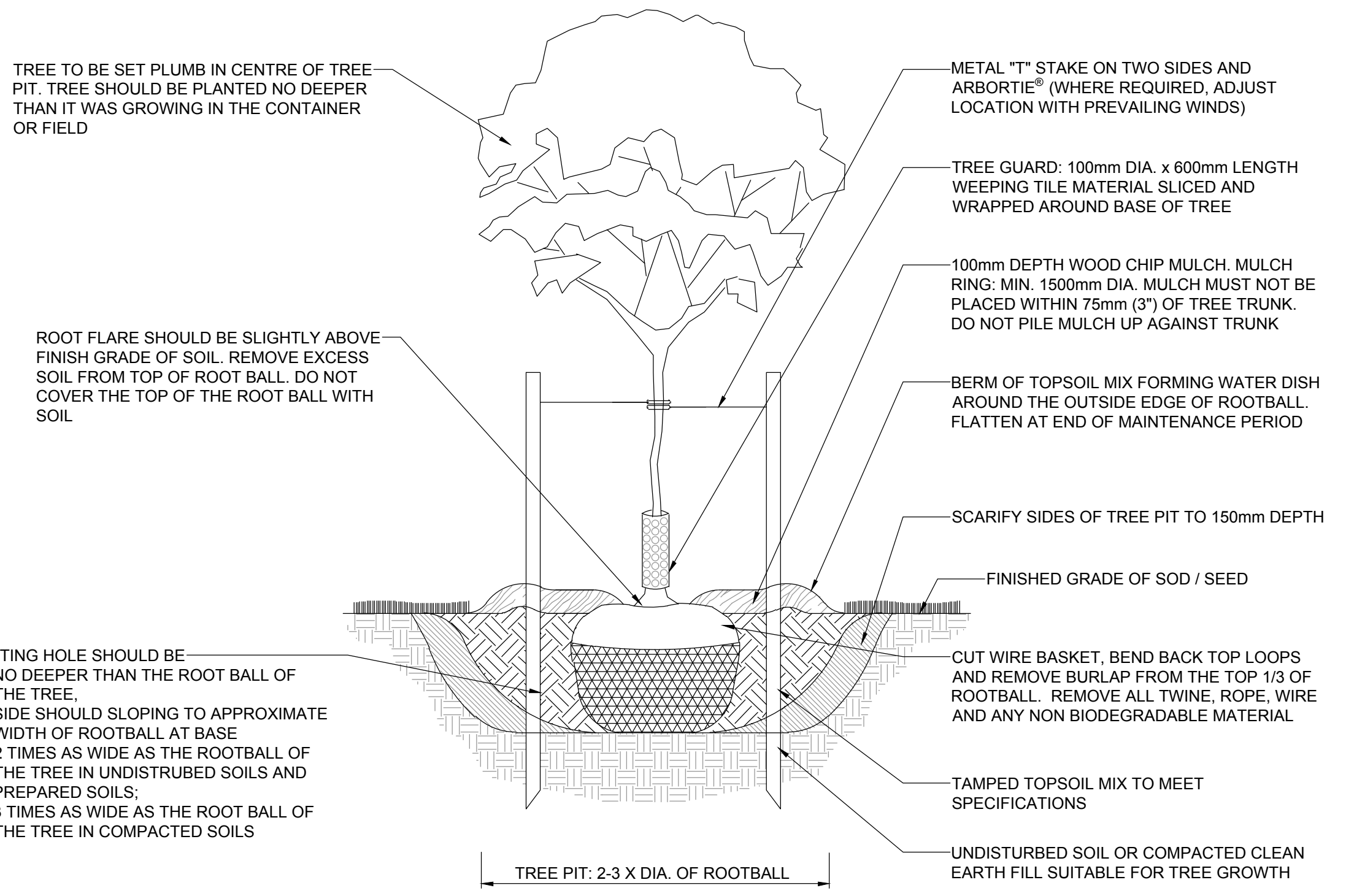
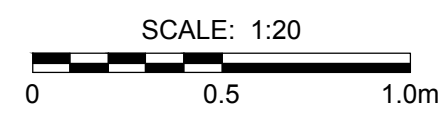


ISO A1 - 594mm x 841mm
Last Saved: 9/19/2018 3:04 PM by wick
Ploated: 9/19/2018 11:43 AM by Windy Fok
S:\staff\m-servar\PROJETS\2018 Projects\16-0245-004 - Empress Overpass\07_CADWORKING\02-2018_Drawing_P-3494-84-RC.dwg

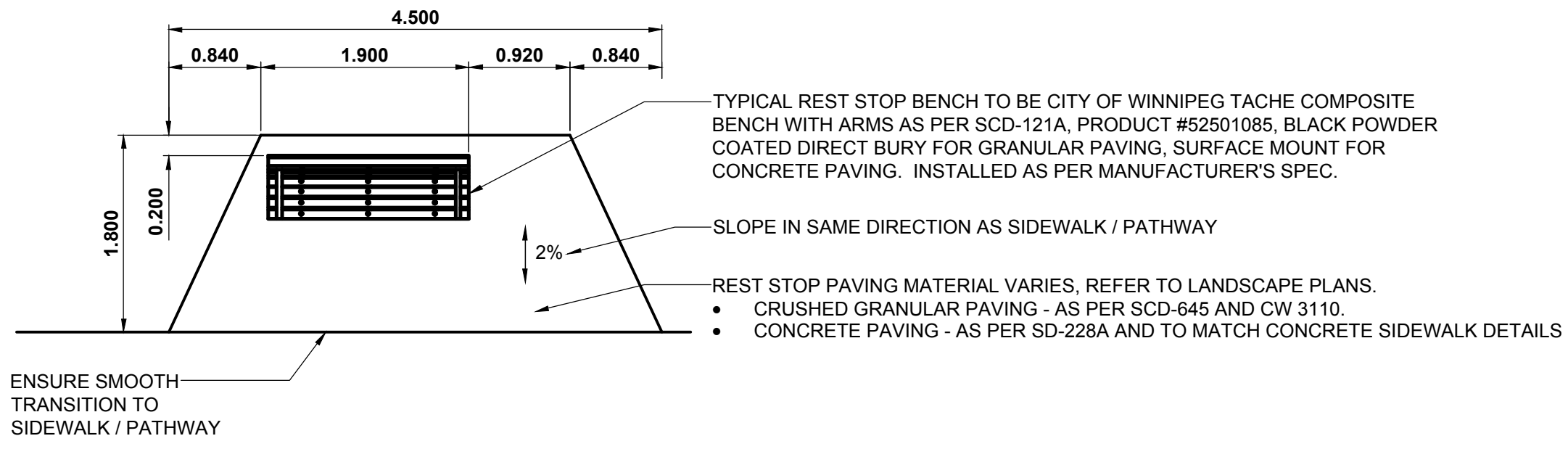


1 TYPICAL DECIDUOUS TREE PLANTING DETAILS
SUPPLEMENTAL SCALE: 1:20

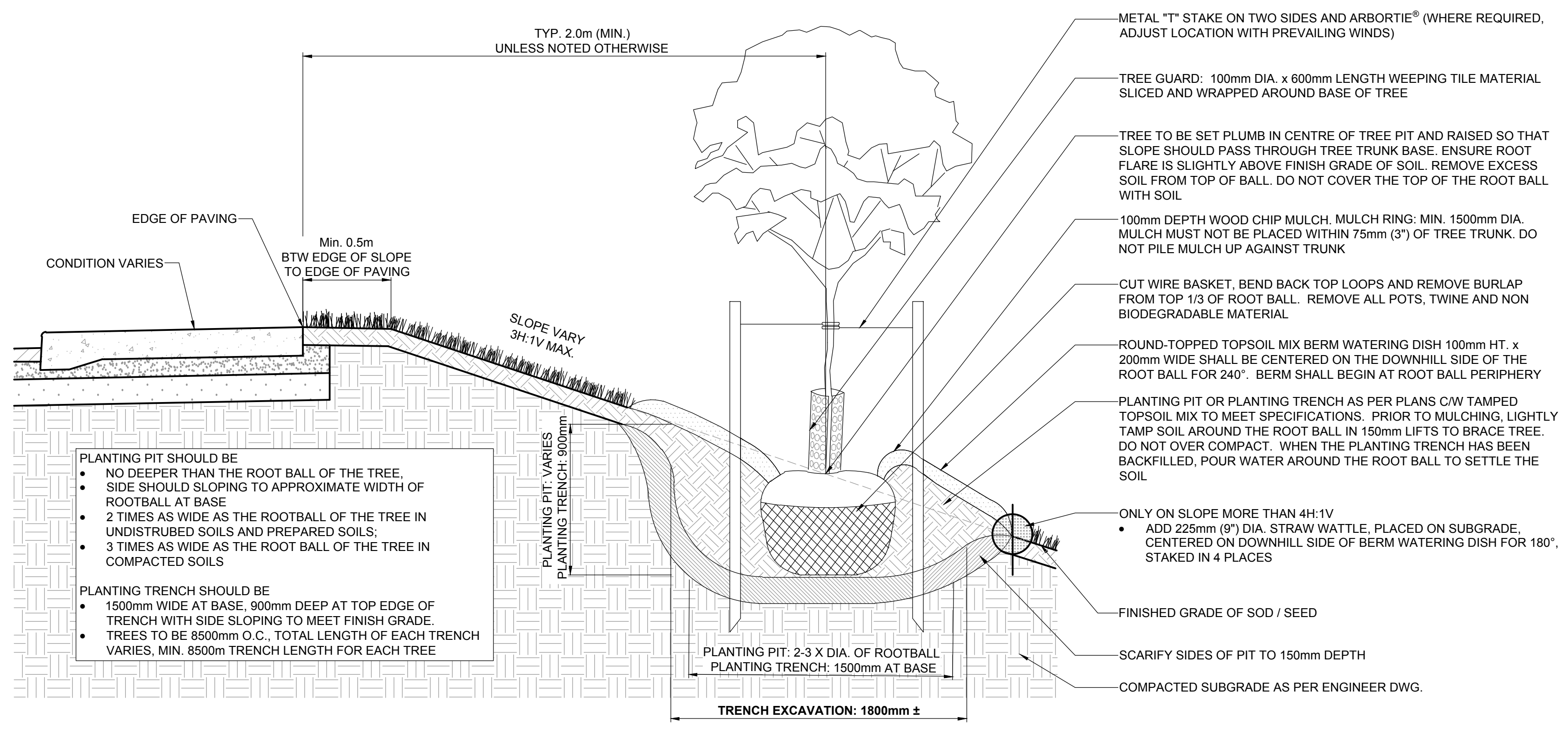
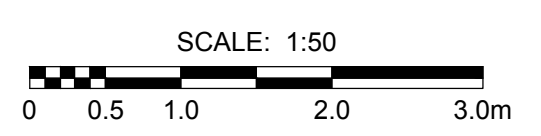


QTY.	COMMON NAME	BOTANICAL NAME	SIZE AND REMARKS (shown are minimum specifications)	SPACING
DECIDUOUS TREES				
25	BARON MANITOBA MAPLE	<i>Acer negundo 'Baron'</i>	60mm Caliper, 3.5 - 4.0m ht., 11 Major Branches in Well Formed Head 2.0m Above Grade. Straight Trunk. Wire Basket Machine Dug. Root Flare to be Visible.	AS SHOWN
19	DELTA HACKBERRY	<i>Celtis occidentalis 'Delta'</i>	50mm Caliper, 3.5 - 4.0m ht., 10 Major Branches in Well Formed Head 1.75m Above Grade. Straight Trunk. Wire Basket Machine Dug. Root Flare to be Visible.	AS SHOWN
18	COTTONWOOD (MALE)	<i>Populus deltoides</i>	50mm Caliper, 3.5 - 4.0m ht., 10 Major Branches in Well Formed Head 1.75m Above Grade. Straight Trunk. Wire Basket Machine Dug. Root Flare to be Visible.	AS SHOWN
17	PEACHLEAF WILLOW	<i>Salix amygdaloides</i>	40-50mm Caliper, 3.0 - 3.5m ht., 8 Major Branches in Well Formed Head 1.75m Above Grade. Straight Trunk. Wire Basket Machine Dug. Root Flare to be Visible.	AS SHOWN
7	AMERICAN BASSWOOD	<i>Tilia americana</i>	60mm Caliper, 3.5 - 4.0m ht., 11 Major Branches in Well Formed Head 2.0m Above Grade. Straight Trunk. Wire Basket Machine Dug. Root Flare to be Visible.	AS SHOWN
4	AMERICAN ELM	<i>Ulmus americana</i>	60mm Caliper, 3.5 - 4.0m ht., 11 Major Branches in Well Formed Head 2.0m Above Grade. Straight Trunk. Wire Basket Machine Dug. Root Flare to be Visible.	AS SHOWN
11	PRAIRIE EXPEDITION ELM	<i>Ulmus americana 'Lewis and Clark'</i>	60mm Caliper, 3.5 - 4.0m ht., 11 Major Branches in Well Formed Head 2.0m Above Grade. Straight Trunk. Wire Basket Machine Dug. Root Flare to be Visible.	AS SHOWN
13	DISCOVERY ELM	<i>Ulmus davidiana japonica 'Discovery'</i>	60mm Caliper, 3.5 - 4.0m ht., 11 Major Branches in Well Formed Head 2.0m Above Grade. Straight Trunk. Wire Basket Machine Dug. Root Flare to be Visible.	AS SHOWN
23	TRIUMPH HYBRID ELM	<i>Ulmus x 'Morton Glossy'</i>	60mm Caliper, 3.5 - 4.0m ht., 11 Major Branches in Well Formed Head 2.0m Above Grade. Straight Trunk. Wire Basket Machine Dug. Root Flare to be Visible.	AS SHOWN
900	WILLOW SANDBAR	<i>Salix exigua</i>	1500mm CUTTING	AS SHOWN
DECIDUOUS SHRUB				
10	NANNYBERRY (SHRUB FORM)	<i>Viburnum lentago</i>	2 gal. container, 900mm Height, min. 9 basal stems. Well formed, dense, bushy plants	AS SHOWN
10	RED OSIER DOGWOOD	<i>Cornus stolonifera / sericea</i>	2 gal. container, 900mm Height, min. 9 basal stems. Well formed, dense, bushy plants	AS SHOWN
10	FALSE INDIGO	<i>Amorpha fruticosa</i>	2 gal. container, 450mm Height, min. 5 basal stems. Well formed, dense, bushy plants	AS SHOWN

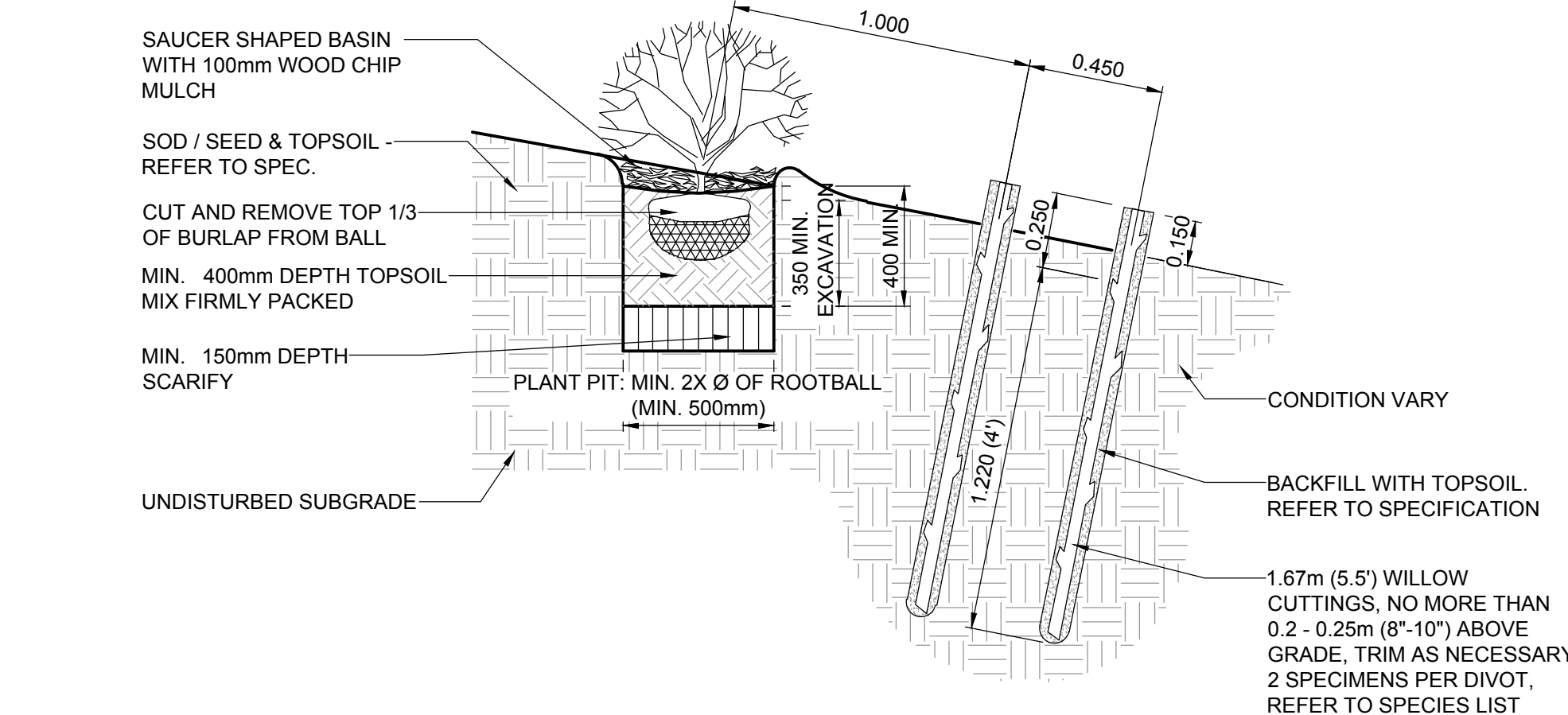
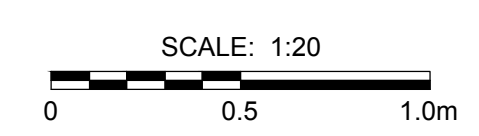
- GENERAL NOTES:**
- ALL CONSTRUCTION MATERIALS AND METHODS TO BE IN ACCORDANCE WITH "THE CITY OF WINNIPEG, STANDARD CONSTRUCTION SPECIFICATION AND STANDARD DETAILS" (LATEST REVISION).
 - FINAL LOCATION OF REST STOPS TO BE CONFIRMED ON SITE PRIOR TO CONSTRUCTION.
 - CONTRACTOR TO STAKE PROPOSED TREE LOCATION ON SITE, LAYOUT TO BE APPROVED BY LANDSCAPE ARCHITECT PRIOR TO INSTALLATION.
 - CONTRACTOR TO CONFIRM THE LOCATION OF ALL UTILITIES/SERVICES IN THE FIELD PRIOR TO CONSTRUCTION.
 - CONTRACTOR MUST FOLLOW THE REQUIREMENTS OF THE VARIOUS UTILITIES.
 - ALSO REFER TO WRITTEN SPECIFICATION.
- TREE PLANTING NOTES**
- PIT TO BE DUG WITH BACK HOE NOT TREE SPADE.
 - CONTRACTOR TO ENSURE TREE SET PLUMB.
 - SECURE 'T'-BARS TO TREE @ APPROX. 2/3 TOTAL TRUNK HEIGHT ABOVE FINISHED GRADE. CONTRACTOR TO ENSURE 'T'-BARS DO NOT PENETRATE ROOTBALL.
 - TREE SHALL BE PRUNED IMMEDIATELY AFTER PLANTING TO REMOVE DEAD, BROKEN, DISEASED, DYING OR RUBBING BRANCHES. CO-DOMINANT STEMS LESS THAN 100mm (4") DIA. AT THE FORKS SHALL BE PRUNED OFF AND ONE MAIN STEM SHOULD REMAIN. TREE TOPPING OR HEADING IS NOT PERMITTED AT ANY TIME.
 - STAKES & TIES TO BE REMOVED BY CONTRACTOR AT END OF MAINTENANCE PERIOD AND UPON ACCEPTANCE BY L.A.
 - MULCH TO BE ENVIRO MULCH (NATURAL COLOUR). THE RECOMMENDED MULCH SHALL CONSIST OF CHIPS NOT LESS THAN 15mm NOT LARGER THAN 75mm IN SIZE AND NOT MORE THAN 20mm THICK.
 - LANDSCAPE ARCHITECT TO INSPECT TREE INSTALLATIONS TO CONFIRM PROPER DEPTH OF PLANTING.
 - ARBORTIE® by Deep Root Canada Corp.
Suite 341 - 550 West Broadway, Vancouver, BC V6Z 0E9
Tel: 604 687 0899, Toll Free: 800 561 3883
Fax: 604 684 6744
Website: <http://www.deepproot.com/products/arbortie/applications>
Email: mjames@deepproot.com
 - ALSO REFER TO CITY OF WINNIPEG TREE PLANTING AND MAINTENANCE SPECIFICATION.



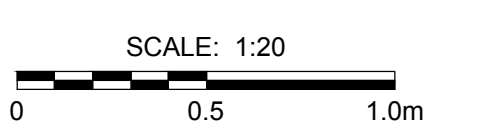
3 TYPICAL REST STOP DETAILS
SUPPLEMENTAL SCALE: 1:50



2 TYPICAL PLANTING ON SLOPE DETAILS FOR TREE PIT OR TREE TRENCH
SUPPLEMENTAL SCALE: 1:20



4 TYP. SHRUB AND WILLOW CUTTING PLANTING ON SLOPE
SUPPLEMENTAL SCALE: 1:20



METRIC
WHOLE NUMBERS INDICATE MILLIMETRES
DECIMAL NUMBERS INDICATE METRES

EXISTING	LEGEND - PLAN	NEW	EXISTING	LEGEND - PLAN	NEW	EXISTING	LEGEND - PLAN	NEW
---	GAS	○	---	MANHOLE	●	---	CONCRETE PAVEMENT	---
---	MTS / PEDESTAL	□	---	CATCH BASIN / CATCH PIT	■	---	CONC SIDEWALK / MEDIAN	---
---	HYDRO / CABINET	△	---	CURB INLET WITH BOX	▲	---	ASPHALT PAVEMENT	---
---	CATV / FIBRE OPTIC	○	---	TREE	○	---	PAVING STONE	---
---	TRAFFIC SIGNALS / PIT	⊕	---	TEST HOLE	⊕	---	GRAVEL	---
---	LAND DRAINAGE SEWER	---	---	PROPERTY LINE	---	---	RAMP CURB	---
---	SANITARY/COMBINED SEWER	---	---	SURVEY BAR	---	---	PLANING / REMOVAL	---
---	CB LEAD / SSP / DCP	---	---	FENCE	---	---		---
---	WATER MAIN	---	---	BOC / EDGE OF PAVEMENT	---	---		---
---	SUBDRAIN	---	---	ELEVATION	(33.333)	---		---
---	DITCH	---	---	TRAFFIC SIGN	---	---		---

LOCATION APPROVED
UNDERGROUND STRUCTURES

DATE: _____

NOTE:
LOCATION OF UNDERGROUND STRUCTURES AS SHOWN ARE BASED ON THE BEST INFORMATION AVAILABLE BUT NO GUARANTEE IS GIVEN THAT ALL EXISTING UTILITIES ARE SHOWN OR THAT THE GIVEN LOCATIONS ARE EXACT. CONFIRMATION OF EXISTENCE AND EXACT LOCATION OF ALL SERVICES MUST BE OBTAINED FROM THE INDIVIDUAL UTILITIES BEFORE PROCEEDING WITH CONSTRUCTION.

NO.	REVISIONS	DATE	BY
C	ISSUED FOR ADDENDUM 1	18/09/21	CO
B	ISSUED FOR TENDER	18/09/04	CO
A	ISSUED FOR CLIENT REVIEW	18/06/27	CO

SCATLIFF + MILLER + MURRAY
visionary urban design + landscapes

DESIGNED BY: CD
CHECKED BY: DM
DRAWN BY: WF
APPROVED BY: CO
RELEASED FOR CONSTRUCTION: N/A

HOR SCALE: 1:250
VERT SCALE: N/A

DATE: 18/06/27

PROFESSIONAL'S SEAL

CHERYL DIXON
Member No. 117

CONSULTANT FILE NAME
602-2018_Drawing_P-3494-84-RC.dwg

THE CITY OF WINNIPEG
PUBLIC WORKS DEPARTMENT
ENGINEERING DIVISION

EMPRESS STREET PROJECT
PAVEMENT RECONSTRUCTION
LANDSCAPING
LANDSCAPE DETAILS & PLANT SCHEDULE

CITY DRAWING NUMBER: P-3494-84
SHEET 84 OF 168
DRAWING No. REV 84 B

BID OPPORTUNITY No. 602-2018