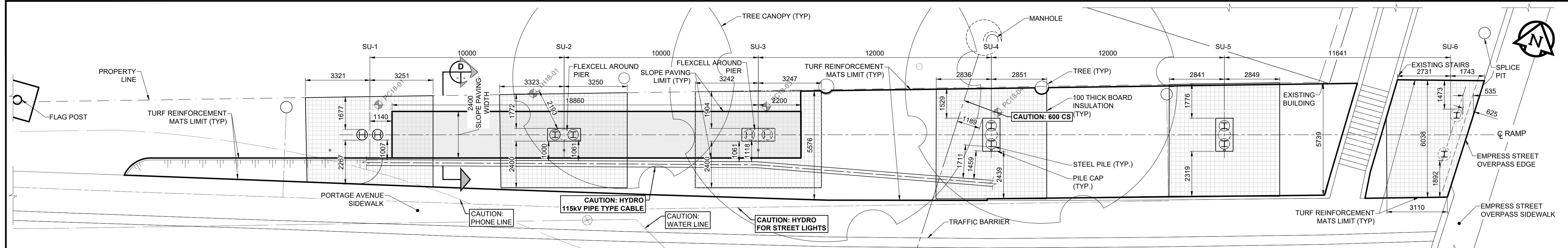
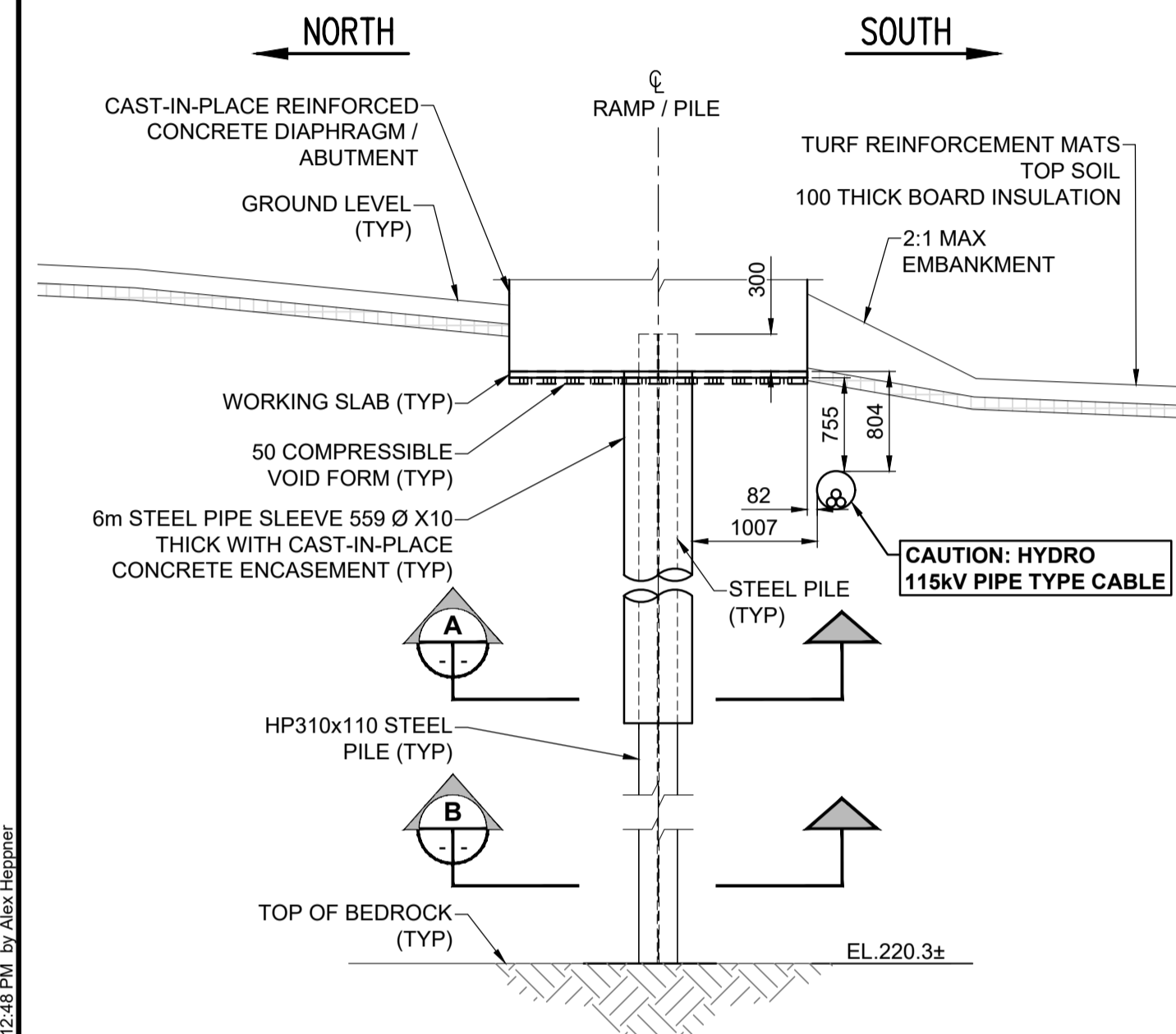


ISO A1 - 594mm x 841mm

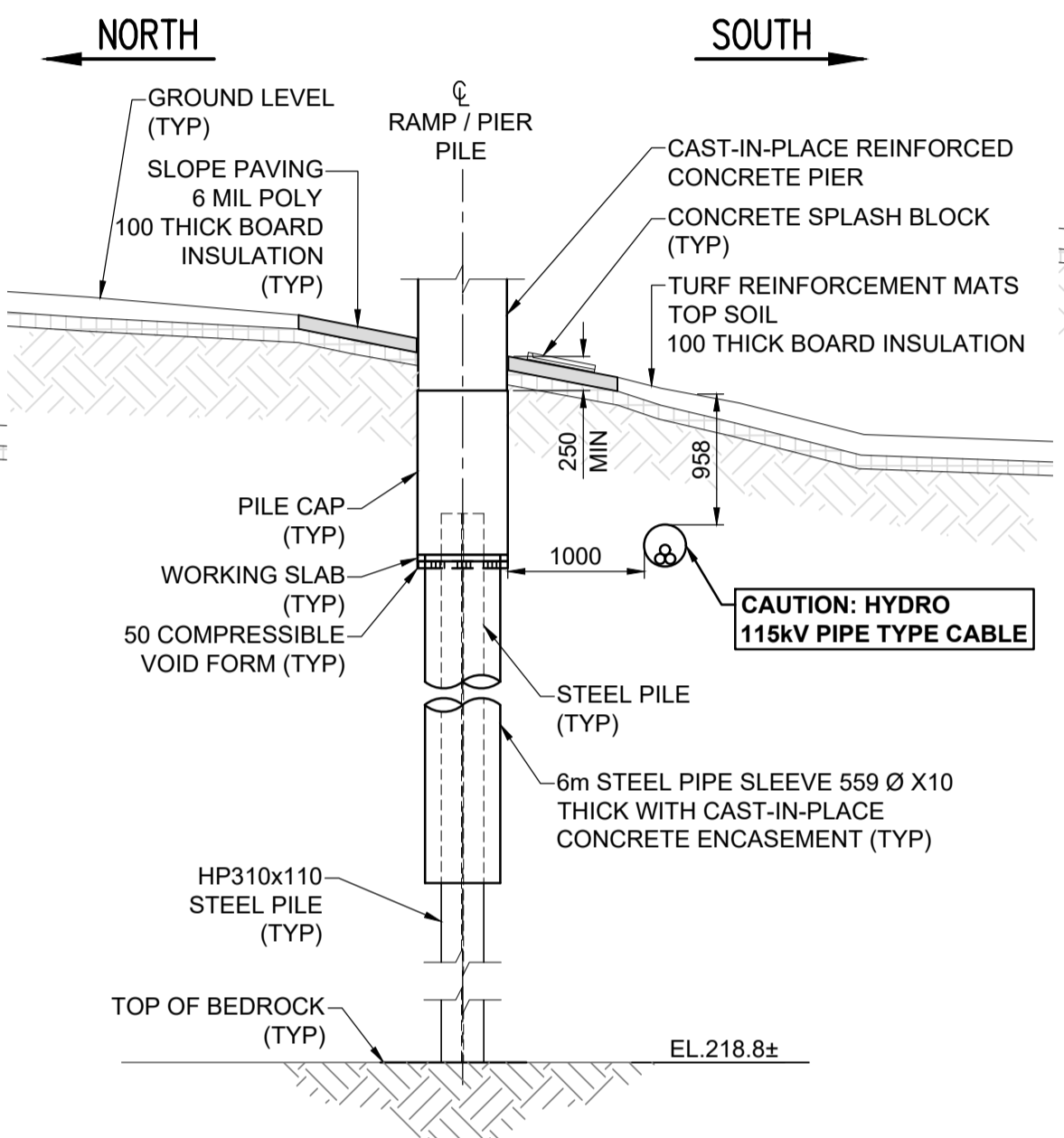
C:\Winproj\Proj\16030344_Design\Structural\Drawings\16030344-DD-NR.dwg - Last Saved: 10/16/2018 12:00 PM by AHappner - Printed: 10/16/2018 12:48 PM by Alex Haggner



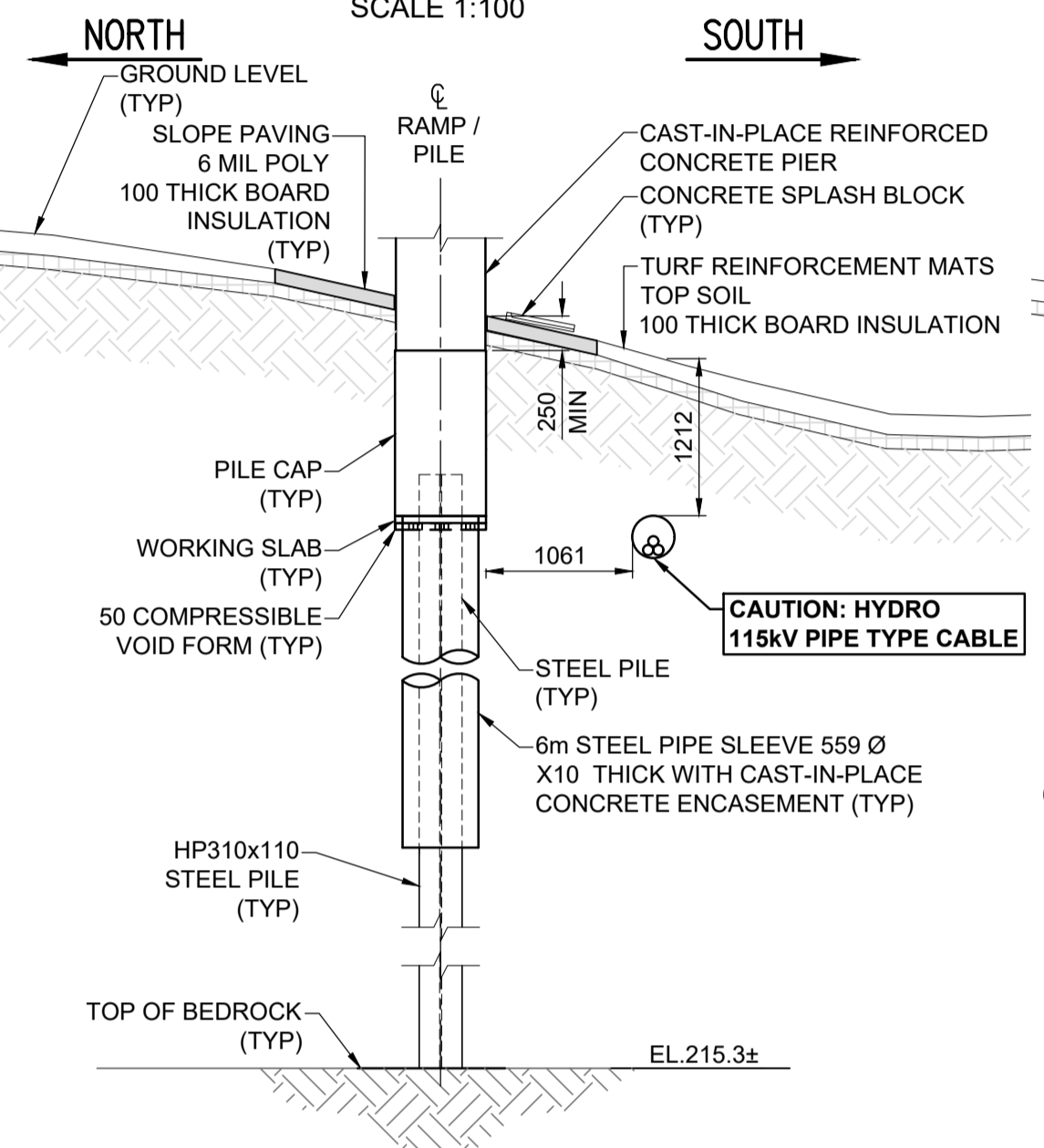
FOUNDATION PLAN
SCALE 1:100



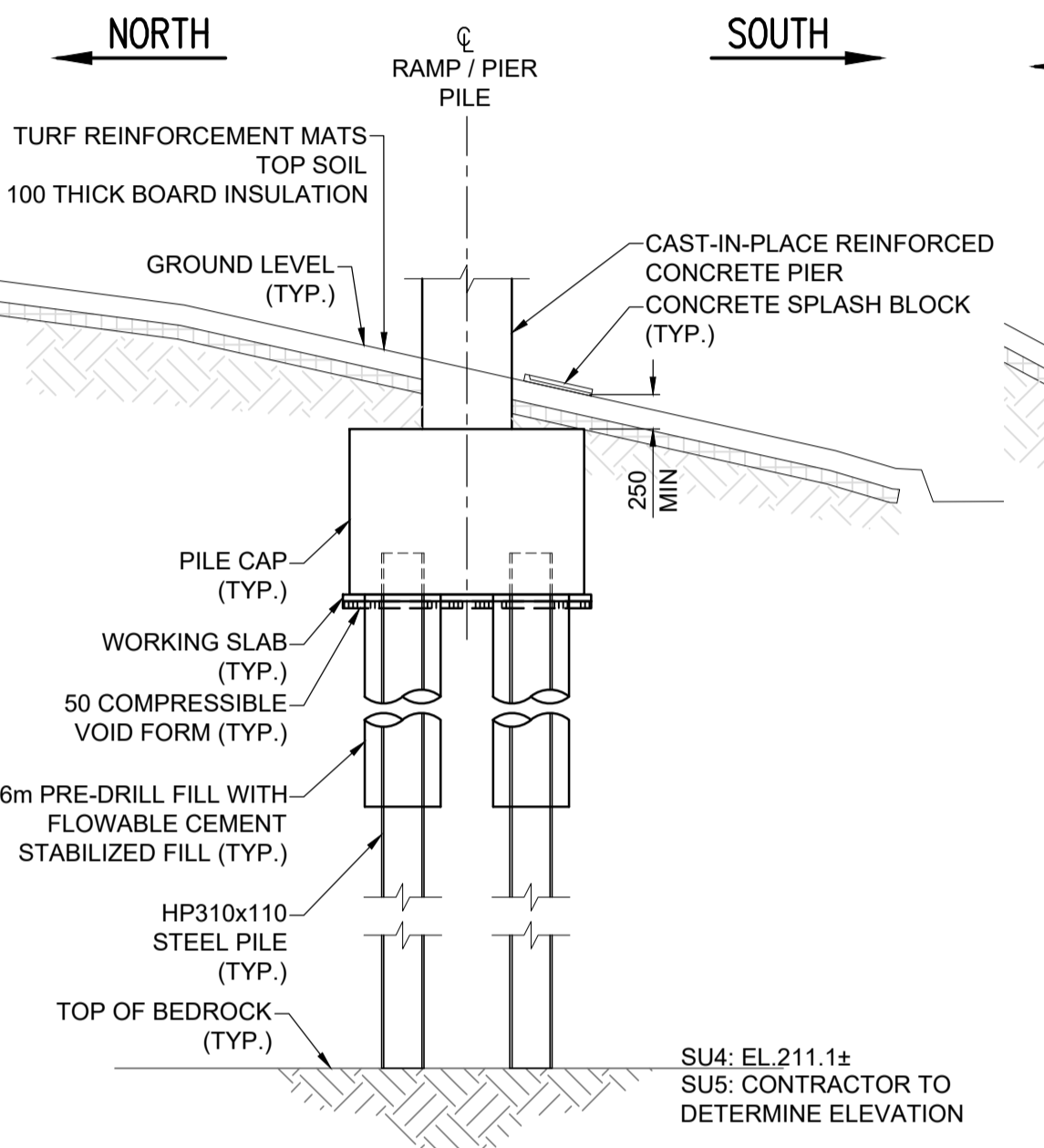
WEST ELEVATION
PILE AT SU-1
SCALE: 1:50



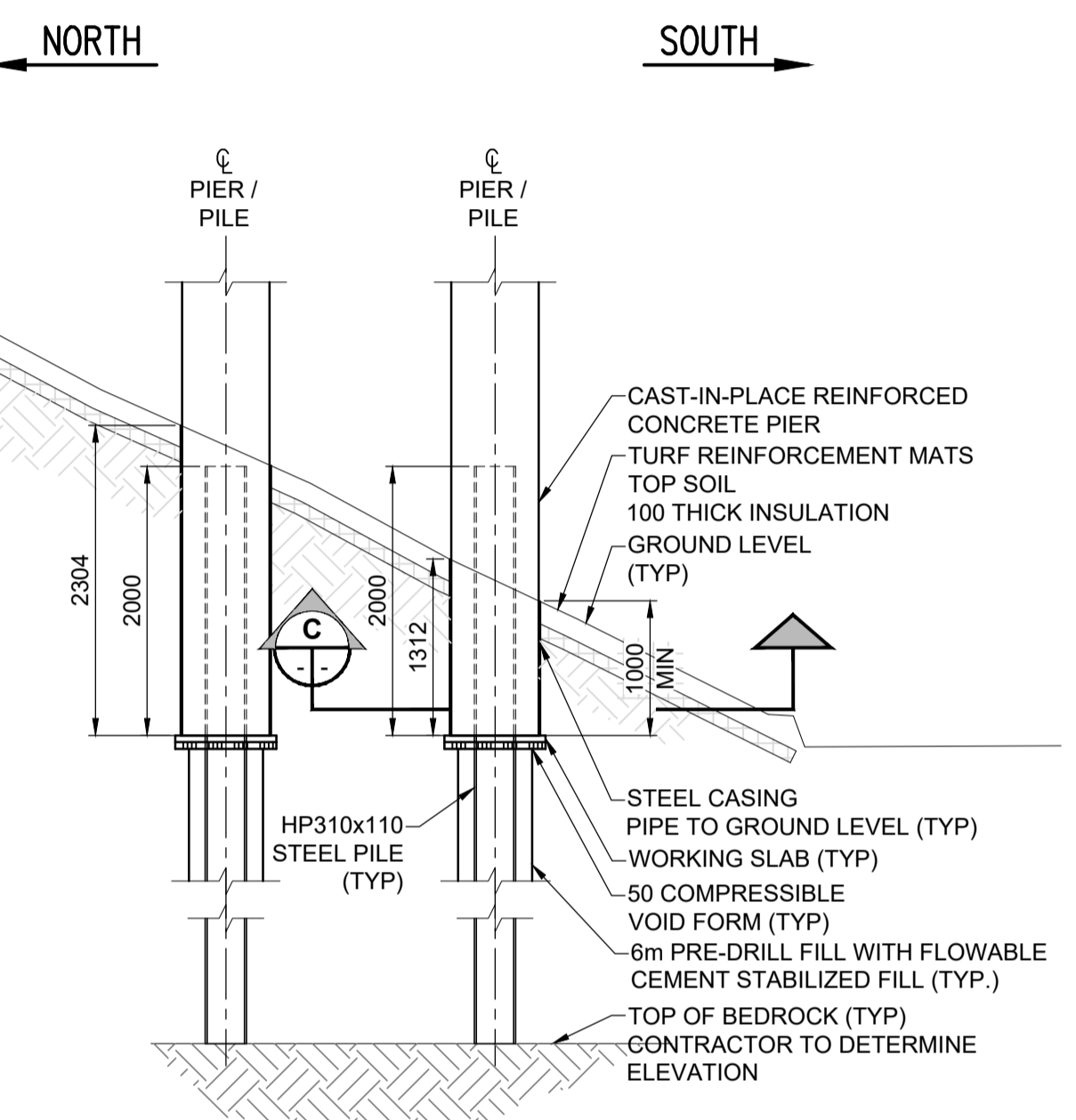
WEST ELEVATION
PILE AT SU-2
SCALE: 1:50



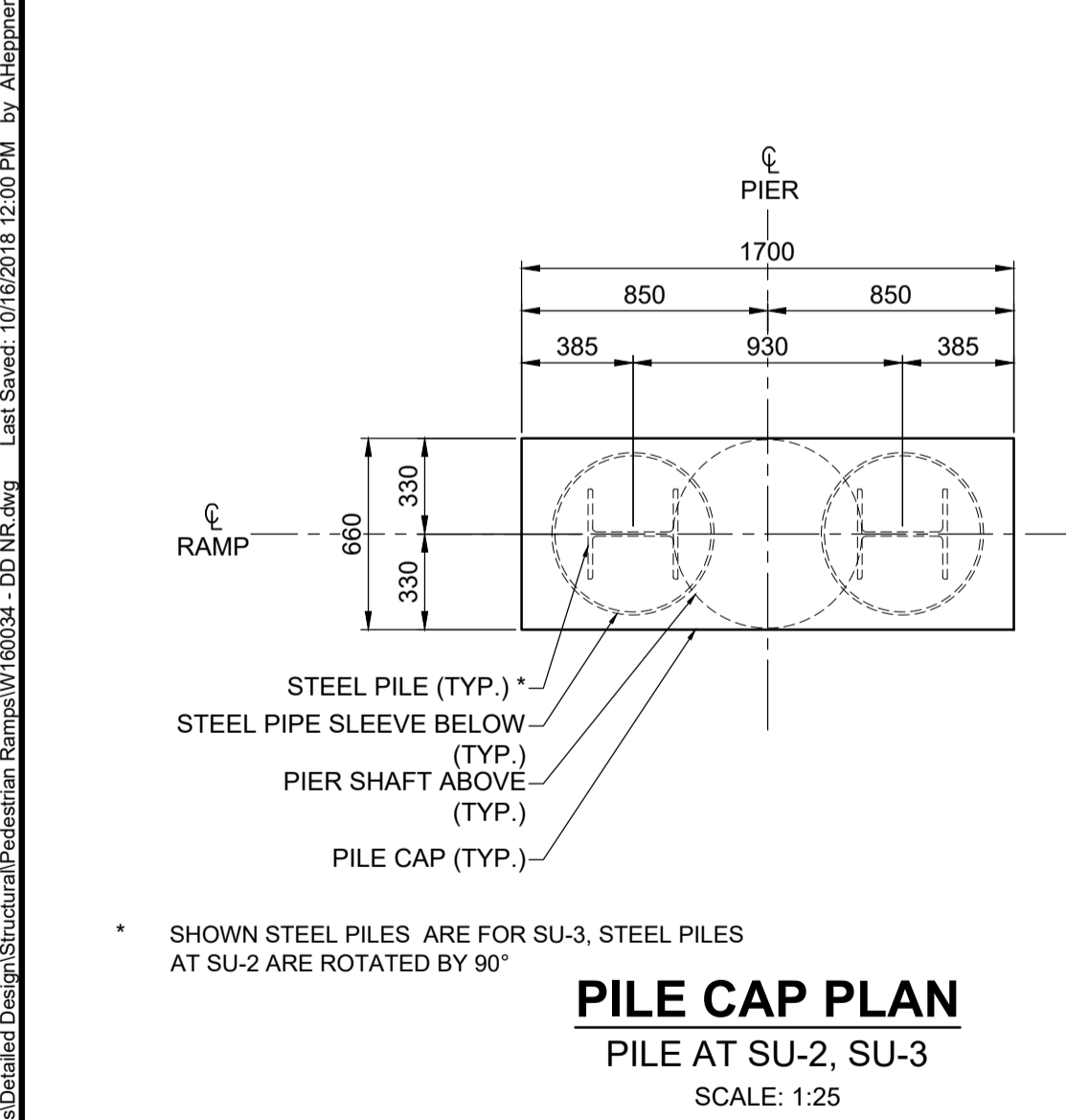
WEST ELEVATION
PILE AT SU-3
SCALE: 1:50



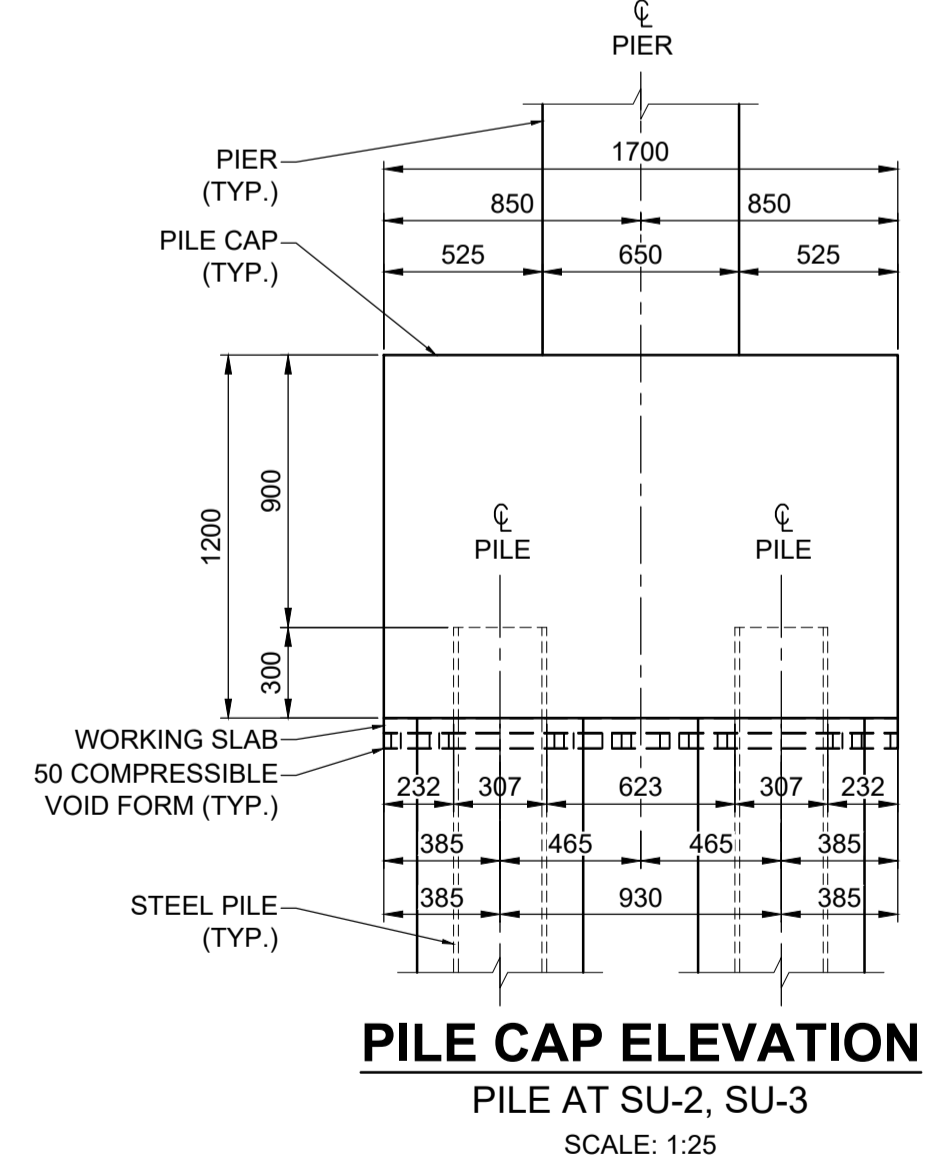
WEST ELEVATION
PILE AT SU-4, SU-5
SCALE: 1:50



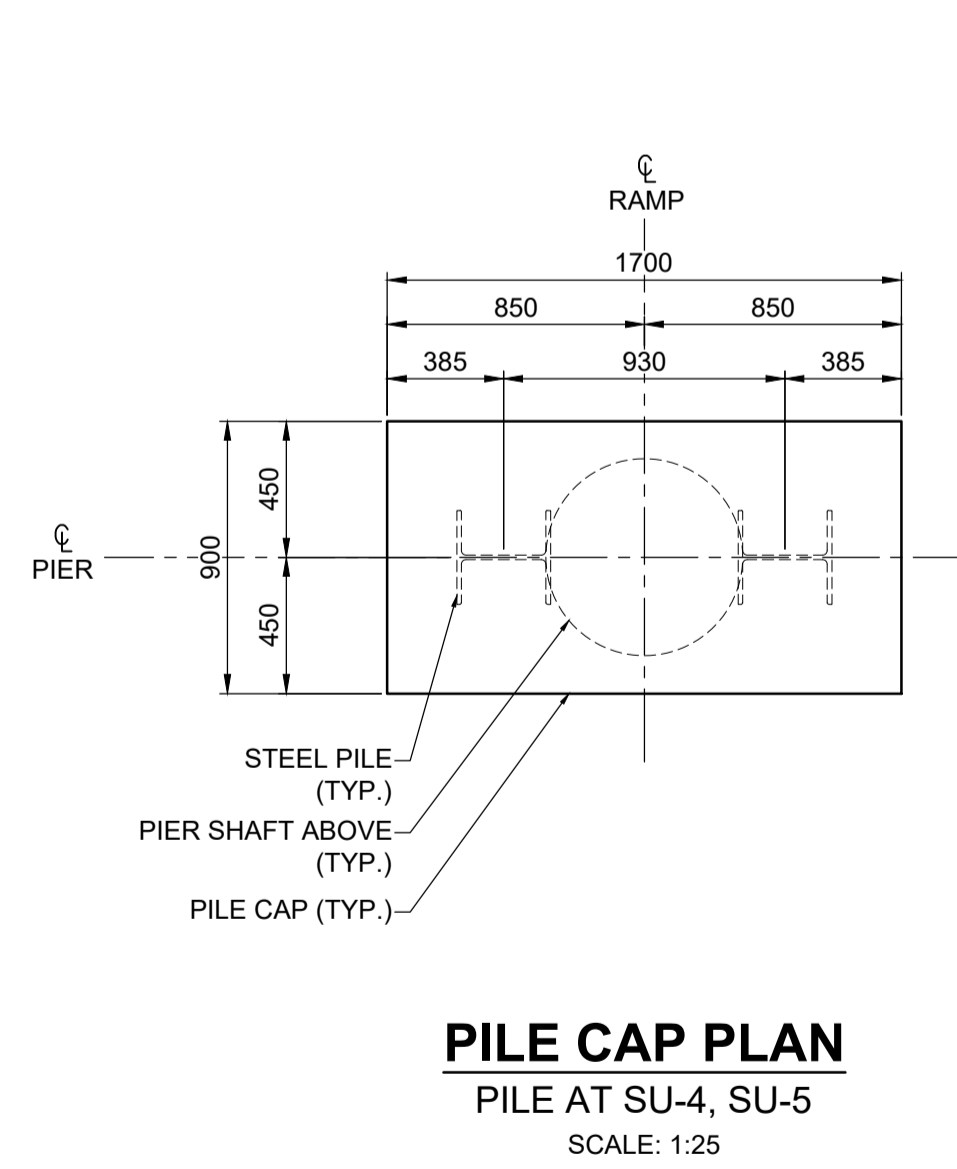
WEST ELEVATION
PILE AT SU-6
SCALE: 1:50



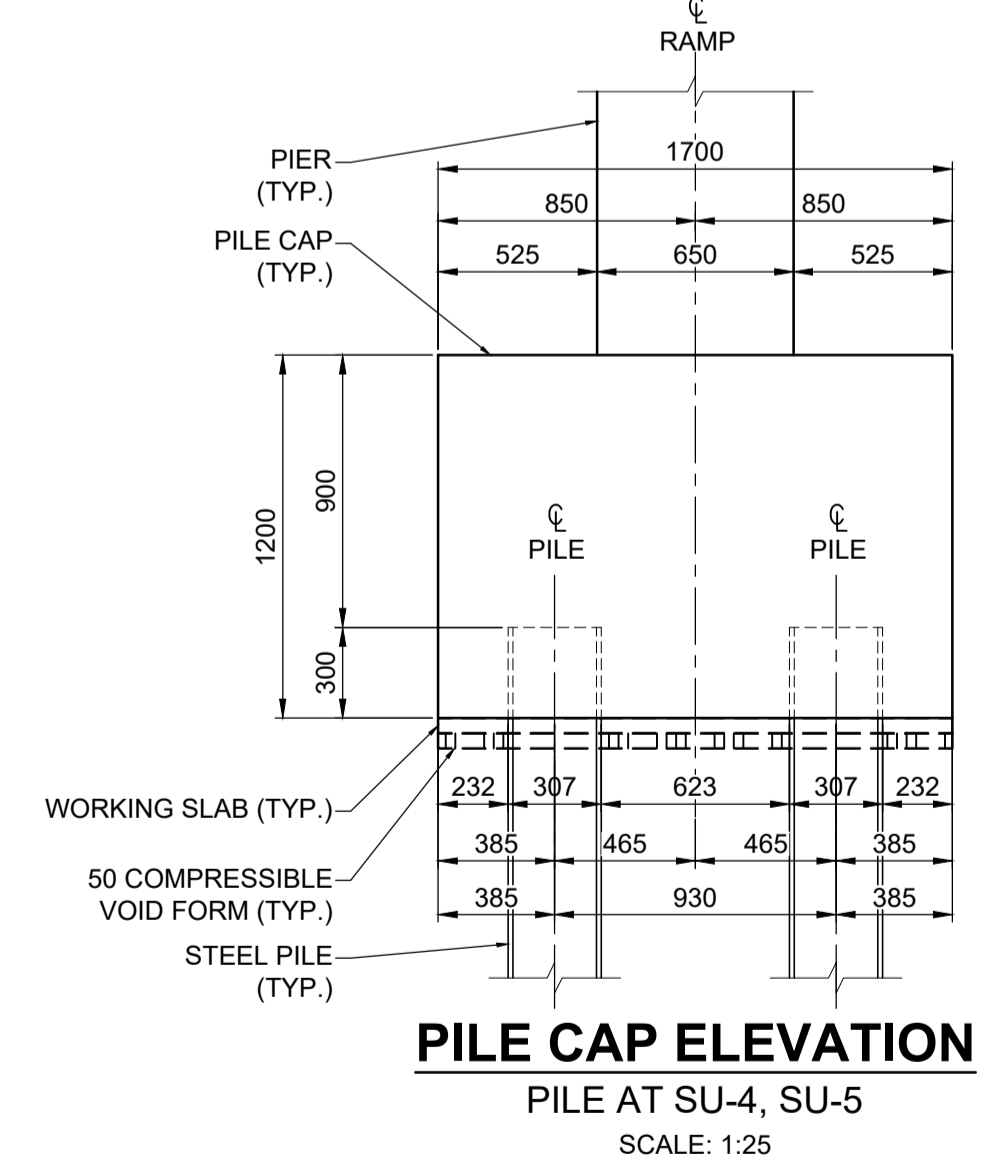
PILE CAP PLAN
PILE AT SU-2, SU-3
SCALE: 1:25



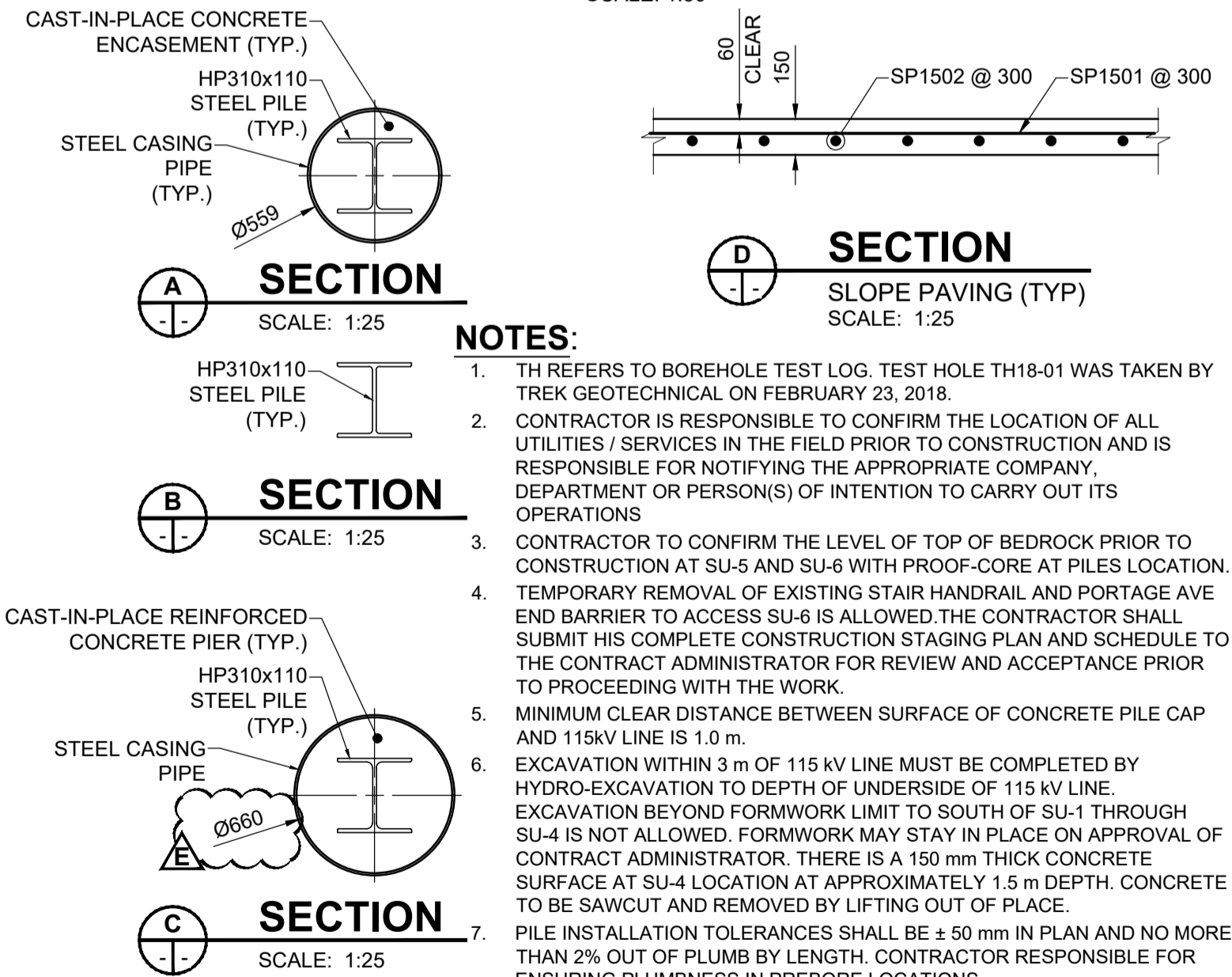
PILE CAP ELEVATION
PILE AT SU-2, SU-3
SCALE: 1:25



PILE CAP PLAN
PILE AT SU-4, SU-5
SCALE: 1:25



PILE CAP ELEVATION
PILE AT SU-4, SU-5
SCALE: 1:25



- NOTES:**
- TH REFERS TO BOREHOLE TEST LOG. TEST HOLE TH18-01 WAS TAKEN BY TREK GEOTECHNICAL ON FEBRUARY 23, 2018.
 - CONTRACTOR IS RESPONSIBLE TO CONFIRM THE LOCATION OF ALL UTILITIES / SERVICES IN THE FIELD PRIOR TO CONSTRUCTION AND IS RESPONSIBLE FOR NOTIFYING THE APPROPRIATE COMPANY, DEPARTMENT OR PERSON(S) OF INTENTION TO CARRY OUT ITS OPERATIONS
 - CONTRACTOR TO CONFIRM THE LEVEL OF TOP OF BEDROCK PRIOR TO CONSTRUCTION AT SU-5 AND SU-6 WITH PROOF-CORE AT PILES LOCATION. TEMPORARY REMOVAL OF EXISTING STAIR HANDRAIL AND PORTAGE AVE END BARRIER TO ACCESS SU-6 IS ALLOWED. THE CONTRACTOR SHALL SUBMIT HIS COMPLETE CONSTRUCTION STAGING PLAN AND SCHEDULE TO THE CONTRACT ADMINISTRATOR FOR REVIEW AND ACCEPTANCE PRIOR TO PROCEEDING WITH THE WORK.
 - MINIMUM CLEAR DISTANCE BETWEEN SURFACE OF CONCRETE PILE CAP AND 115KV LINE IS 1.0 m.
 - EXCAVATION WITHIN 3 m OF 115 KV LINE MUST BE COMPLETED BY HYDRO-EXCAVATION TO DEPTH OF UNDERSIDE OF 115 KV LINE. EXCAVATION BEYOND FORMWORK LIMIT TO SOUTH OF SU-1 THROUGH SU-4 IS NOT ALLOWED. FORMWORK MAY STAY IN PLACE ON APPROVAL OF CONTRACT ADMINISTRATOR. THERE IS A 150 mm THICK CONCRETE SURFACE AT SU-4 LOCATION AT APPROXIMATELY 1.5 m DEPTH. CONCRETE TO BE SAWCUT AND REMOVED BY LIFTING OUT OF PLACE.
 - PILE INSTALLATION TOLERANCES SHALL BE ± 50 mm IN PLAN AND NO MORE THAN 2% OUT OF PLUMB BY LENGTH. CONTRACTOR RESPONSIBLE FOR ENSURING PLUMBNESS IN PREBORE LOCATIONS

| NORTH RAMP PILE LAYOUT | | | |
|------------------------|-----------------------|----------|-----------|
| Location | Pile Cutoff Elevation | Northing | Easting |
| SU1-E | 233.002 | 9017.258 | 10752.530 |
| SU1-W | 233.002 | 9017.037 | 10751.762 |
| SU2-E | 231.857 | 9020.040 | 10762.203 |
| SU2-W | 231.857 | 9019.783 | 10761.309 |
| SU3-E | 231.503 | 9022.804 | 10771.814 |

| NORTH RAMP PILE LAYOUT | | | |
|------------------------|-----------------------|----------|-----------|
| Location | Pile Cutoff Elevation | Northing | Easting |
| SU3-W | 231.503 | 9022.547 | 10770.920 |
| SU4-N | 231.134 | 9026.440 | 10782.771 |
| SU4-S | 231.134 | 9025.546 | 10783.028 |
| SU5-N | 231.037 | 9029.757 | 10794.303 |
| SU5-S | 231.037 | 9028.863 | 10794.560 |

| NORTH RAMP PILE LAYOUT | | | |
|------------------------|-----------------------|----------|-----------|
| Location | Pile Cutoff Elevation | Northing | Easting |
| SU6-N | 232.653 | 9033.576 | 10805.647 |
| SU6-S | 232.653 | 9031.479 | 10805.590 |



METRIC
WHOLE NUMBERS INDICATE MILLIMETRES
DECIMAL NUMBERS INDICATE METRES

LOCATION APPROVED
UNDERGROUND STRUCTURES

DATE: _____

NOTE:
LOCATION OF UNDERGROUND STRUCTURES AS SHOWN ARE BASED ON THE BEST INFORMATION AVAILABLE BUT NO GUARANTEE IS GIVEN THAT ALL EXISTING UTILITIES ARE SHOWN OR THAT THE GIVEN LOCATIONS ARE EXACT. CONFIRMATION OF EXISTENCE AND EXACT LOCATION OF ALL SERVICES MUST BE OBTAINED FROM THE INDIVIDUAL UTILITIES BEFORE PROCEEDING WITH CONSTRUCTION.

| No. | REVISIONS | DATE | BY |
|-----|------------------------------|----------|-----|
| E | ISSUED FOR ADDENDUM 2 | 18/10/16 | BAP |
| D | ISSUED FOR ADDENDUM 1 | 18/10/05 | BAP |
| C | ISSUED FOR TENDER | 18/09/04 | BAP |
| B | ISSUED FOR 95% DESIGN REVIEW | 18/08/07 | BAP |
| A | ISSUED FOR 50% DESIGN REVIEW | 18/06/28 | BAP |

MORRISON HERSHFIELD

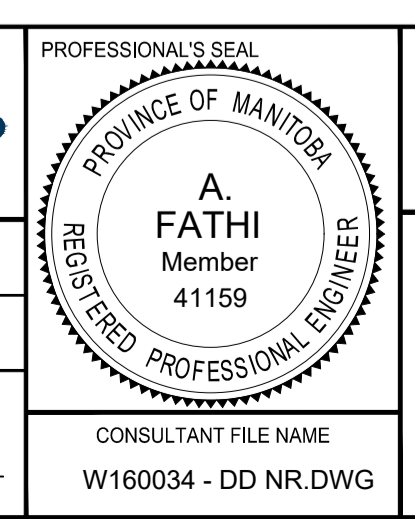
DESIGNED BY: YM
CHECKED BY: AF

DRAWN BY: ALP
APPROVED BY: BAP

HOR SCALE: AS SHOWN
VERT SCALE: AS SHOWN

RELEASED FOR CONSTRUCTION

DATE: _____



THE CITY OF WINNIPEG
PUBLIC WORKS DEPARTMENT
ENGINEERING DIVISION

EMPRESS STREET PROJECT
PEDESTRIAN ACCESSIBILITY RAMPS
NORTH RAMP
FOUNDATION DETAILS

CITY DRAWING NUMBER: P-3494-140
SHEET OF: 140 OF 169
DRAWING No.: 140
REV: E

BID OPPORTUNITY No. 602-2018